

UNITED STATES
DEPARTMENT OF THE INTERIOR
BUREAU OF LAND MANAGEMENT

APPLICATION FOR PERMIT TO DRILL, DEEPEN, OR PLUG BACK

1a. TYPE OF WORK
DRILL ☒ DEEPEN ☐ PLUG BACK ☐
b. TYPE OF WELL
OIL WELL ☒ GAS WELL ☐ OTHER ☐
FEB 13 1986 SINGLE ZONE ☐ MULTIPLE ZONE ☒

2. NAME OF OPERATOR
Chace Oil Company, Inc.

3. ADDRESS OF OPERATOR
BUREAU OF LAND MANAGEMENT
FARMINGTON RESOURCE AREA
313 Washington SE, Albuquerque, NM 87108

4. LOCATION OF WELL (Report location clearly and in accordance with any State requirements.)
At SURFACE 1658' FNL & 2140' FWL, Unit 'F', Section 12, T23N, R4W
At proposed prod. zone

14. DISTANCE IN MILES AND DIRECTION FROM NEAREST TOWN OR POST OFFICE*
15 miles west-southwest of Lindrith, New Mexico

10. DISTANCE FROM PROPOSED* 1658' from lease line
LOCATION TO NEAREST PROPERTY OR LEASE LINE, FT. 338' from unit line
(Also to nearest drig. unit line, if any)

18. DISTANCE FROM PROPOSED LOCATION*
TO NEAREST WELL DRILLING COMPLETED
OR APPLIED FOR ON THIS LEASE, FT. 1300'

21. ELEVATIONS (Show whether DF, RT, GR, etc.)
7396' GR

23. DRILLING OPERATIONS AUTHORIZED ARE
SUBJECT TO COMPLIANCE WITH ATTACHED
"GENERAL REQUIREMENTS"

SIZE OF HOLE	SIZE OF CASING	WEIGHT PER FOOT	SETTING DEPTH
12 1/4"	8 5/8"	24# (J-55)	225'
7 7/8"	4 1/2"	11.6# (N-80)	7625'

5. LEASE DESIGNATION AND SERIAL NO.
Jicarilla Contract #47

6. IF INDIAN, ALLOTTEE OR TRIBE NAME
Jicarilla Apache

7. UNIT AGREEMENT NAME

8. FARM OR LEASE NAME

Jicarilla Tribal Cont. #47

9. WELL NO.

47-29

10. FIELD AND POOL, OR WILDCAT

S. Lindrith Gallup Dakota

11. SEC., T., R., M., OR BLK.
AND SURVEY OR AREA

Section 12, T23N, R4W

12. COUNTY OR PARISH

Rio Arriba

13. STATE

New Mexico

17. NO. OF ACRES ASSIGNED
TO THIS WELL

40

20. ROTARY OR CABLE TOOLS

Rotary

22. APPROX. DATE WORK WILL START*

7/15/86

This action is subject to technical and
procedural review pursuant to 43 CFR 3165.3,
and appeal pursuant to 43 CFR 3165.4.

225 sks (405 CF) Class B cement
1st stage: 750 sks (1350 CF)
50/50 pozmix.
2nd stage: 505 sks (909 CF)
40/60 pozmix (12% gel)
40 sks (72 CF) Class B cement

Drill 230' of 12 1/4" surface hole. Set 225' of 8 5/8" casing. Cement to surface with
225 sks (405 CF) cement. Using a water base mud (15% oil) and Schaeffer 5000# standard
doublegate hydraulic BOP, drill 7 7/8" hole to 7625' to test the Dakota formation.
Logging program: Run Dil, Caliper, GR, SP, FDC-CNL from T. D. to surface.

Estimated Tops:

Ojo Alamo	2663	Point Lookout	5208'	Dakota 'A'	7314'
Picture Cliffs	3078'	Gallup	5908'	Dakota 'D'	7454'
Chacra	3428'	Tocito	6920'	Burro Canyon	7558'
Cliff House	4628'	Greenhorn	7223'		

IN ABOVE SPACE DESCRIBE PROPOSED PROGRAM: If proposal is to deepen or plug back, give data on present productive zone and proposed new productive
zone. If proposal is to drill or deepen directionally, give pertinent data on subsurface conditions and measured and true vertical depths. Give blowout
preventer program, if any.

24. SIGNED Monte Anderson TITLE Geologist DATE 2-10-86

(This space for Federal or State office use)

PERMIT NO. _____ APPROVAL DATE _____

APPROVED BY _____ TITLE _____

CONDITIONS OF APPROVAL, IF ANY:

NMOCC

*See Instructions On Reverse Side

Title 18 U.S.C. Section 1001, makes it a crime for any person knowingly and willfully to make to any department or agency of the
United States any false, fictitious or fraudulent statements or representations, or to knowingly and willfully submit any false, fictitious or fraudulent

All distances must be from the outer boundaries of the Section.

Operator CHACE OIL COMPANY		Lease JICARILLA 47		Well No. 29
Unit Letter F	Section 12	Township 23 NORTH	Range 4 WEST	County RIO ARriba

Actual Footage Location of Well:

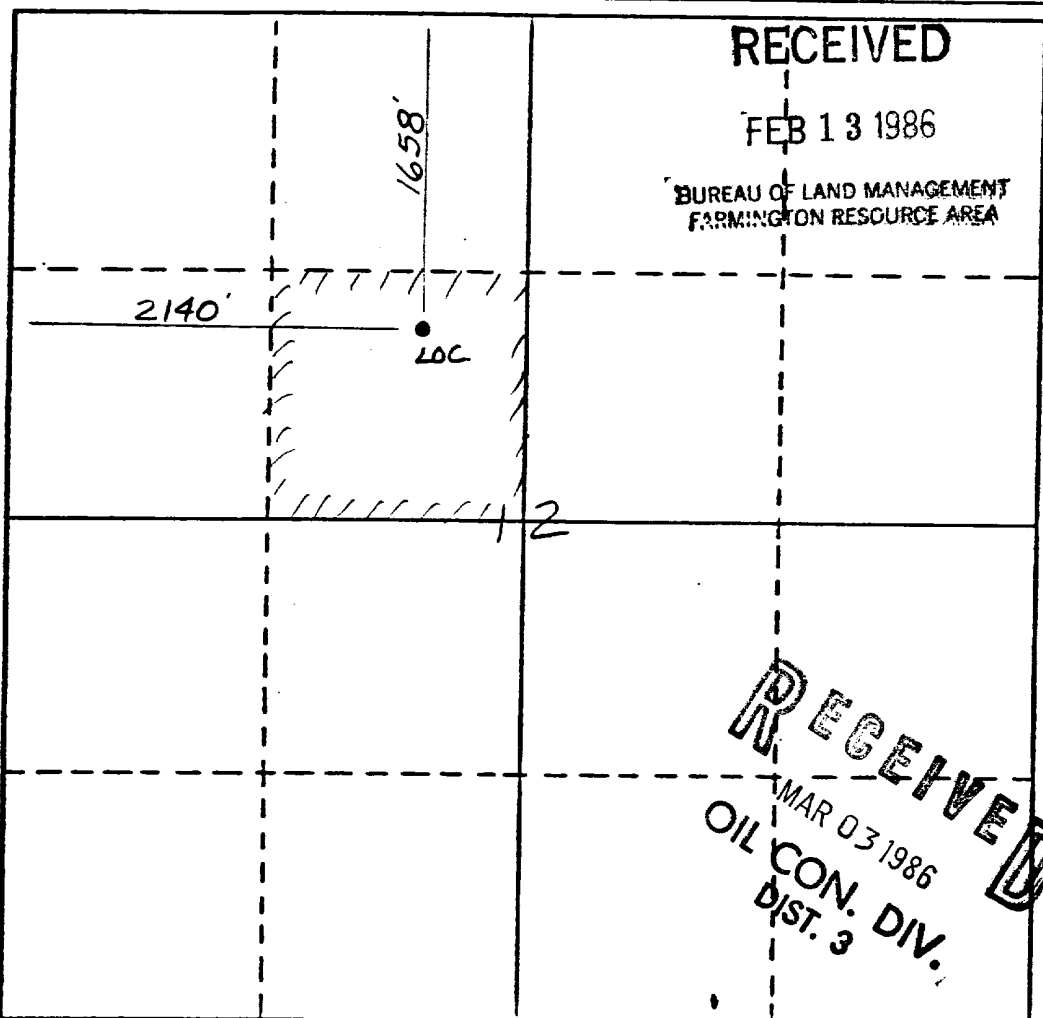
1658 feet from the NORTH line and 2140 feet from the WEST line	
Ground Level Elev. 7396'	Producing Formation Gallup - Dakota
Pool South Lindrieth Gallup - Dakota	Dedicated Acreage: 40 Acres

1. Outline the acreage dedicated to the subject well by colored pencil or hatchure marks on the plat below.
2. If more than one lease is dedicated to the well, outline each and identify the ownership thereof (both as to working interest and royalty).
3. If more than one lease of different ownership is dedicated to the well, have the interests of all owners been consolidated by communitization, unitization, force-pooling, etc?

☐ Yes ☐ No If answer is "yes," type of consolidation _____

If answer is "no," list the owners and tract descriptions which have actually been consolidated. (Use reverse side of this form if necessary.) _____

No allowable will be assigned to the well until all interests have been consolidated (by communitization, unitization, forced-pooling, or otherwise) or until a non-standard unit, eliminating such interests, has been approved by the Division.



CERTIFICATION

I hereby certify that the information contained herein is true and complete to the best of my knowledge and belief.

Monte Anderson

Name

Geologist

Position

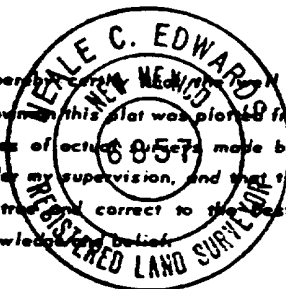
Chace Oil Company

Company

1-30-86

Date

I hereby certify that the location shown on this plat was plotted from field notes of actual surveys made by me or under my supervision, and that the same is true and correct to the best of my knowledge and belief.



Date Surveyed

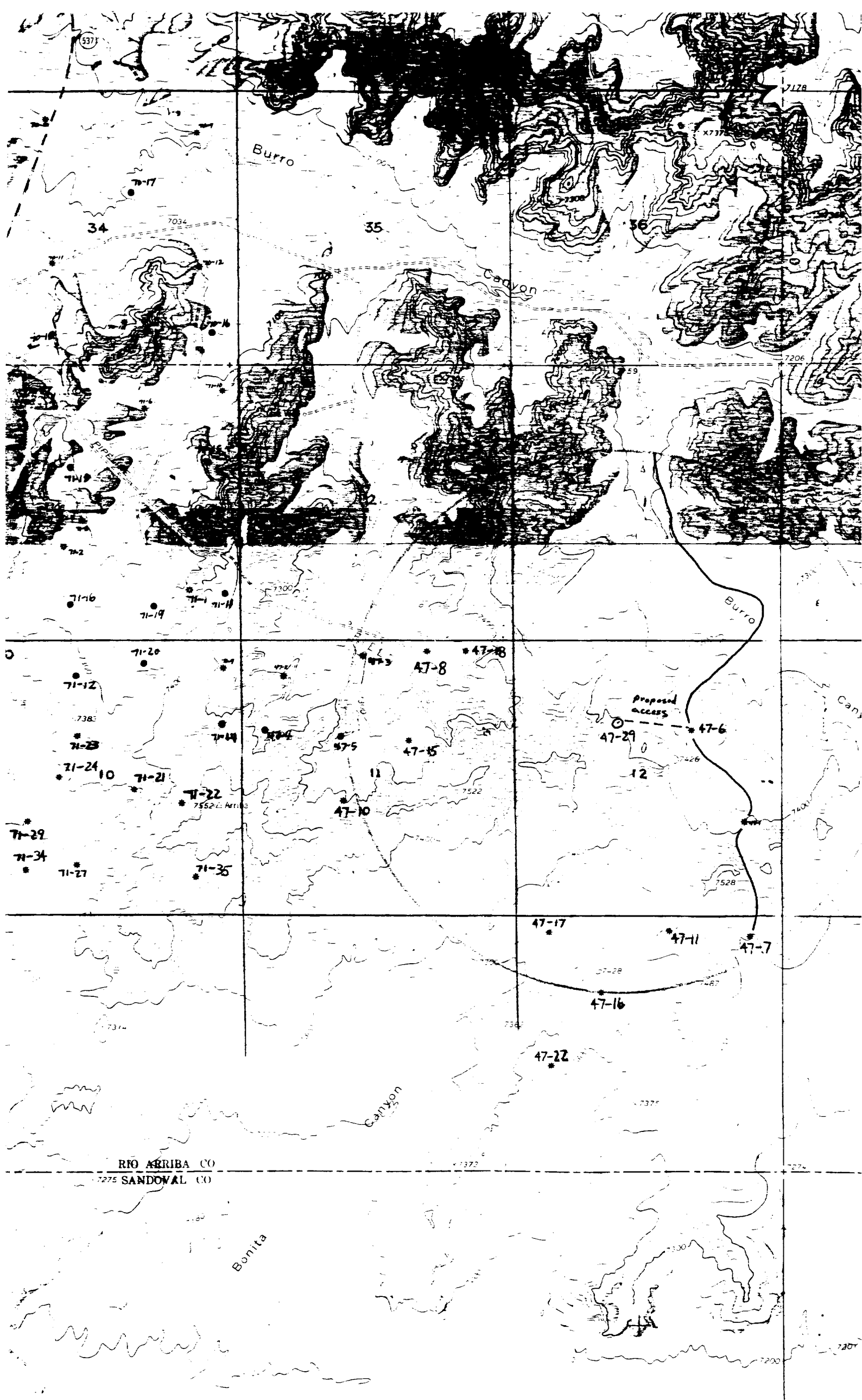
1-21-86

Registered Professional Engineer and/or Land Surveyor:

Willie C. Edwards

Certificate No.

6857



RIO ARriba CO
SANDOVAL CO

Bonita