

UNITED STATES
DEPARTMENT OF THE INTERIOR
BUREAU OF LAND MANAGEMENT

APPLICATION FOR PERMIT TO DRILL, DEEPEN, OR PLUG BACK

1a. TYPE OF WORK

DRILL ☒

DEEPEN ☐

PLUG BACK ☐

b. TYPE OF WELL

OIL
WELL ☒

GAS
WELL ☐

OTHER ☐

SINGLE
ZONE ☐

MULTIPLE
ZONE ☒

2. NAME OF OPERATOR

Bannon Energy, Inc.

3. ADDRESS OF OPERATOR

P.O. Box 2058, Farmington NM 87499

4. LOCATION OF WELL (Report location clearly and in accordance with any State requirements.)
At surface

625' FSL, 440' FWL

At proposed prod. zone
same

14. DISTANCE IN MILES AND DIRECTION FROM NEAREST TOWN OR POST OFFICE*

3 1/2 miles NW from Counselors Trading Post

15. DISTANCE FROM PROPOSED*

LOCATION TO NEAREST
PROPERTY OR LEASE LINE, FT.
(Also to nearest drig. unit line, if any)

16. NO. OF ACRES IN LEASE

2557.2461.69

17. NO. OF ACRES ASSIGNED
TO THIS WELL

40.68

18. DISTANCE FROM PROPOSED LOCATION*
TO NEAREST WELL, DRILLING, COMPLETED,
OR APPLIED FOR, ON THIS LEASE, FT.

19. PROPOSED DEPTH

5800'

20. ROTARY OR CABLE TOOLS

Rotary

21. ELEVATIONS (Show whether DF, RT, GR, etc.)

7007' GR

DRILLING OPERATIONS AUTHORIZED ARE
SUBJECT TO COMPLIANCE WITH ATTACHED
GENERAL REQUIREMENTS

22. APPROX. DATE WORK WILL START*

October 1, 1989

23.

PROPOSED CASING AND CEMENTING PROGRAM

This section is subject to the post and
procedural review pursuant to 43 CFR 3165.3
and appeal pursuant to 43 CFR 3165.4
QUANTITY OF CEMENT

SIZE OF HOLE	SIZE OF CASING	WEIGHT PER FOOT	SETTING DEPTH	
12 1/4"	8 5/8"	24.0 lb.J-55	300'	Cement to Surface
7 7/8"	4 1/2"	10.5 lb.K-55	5800'	800 sx - volumes to be calculated subsequent to logging.

RECEIVED

OCT 26 1989

OIL CON. DIV

DIST. 2

Well to be drilled to penetrate the Gallup formation. All producing
intervals in the Gallup will be stimulated as necessary.

EXHIBITS:

- "A" Location and Elevation Plat
- "B" Ten point compliance program
- "C" Blowout preventor diagram
- "D" Multi-point requirements of APD
- The gas from this lease is committed.

- "E" Site specific checklist
for roads
- "F" Drill rig layout
- "G" Completion program layout
- "H" Location Profile
- "I" Proposed Pipeline

IN ABOVE SPACE DESCRIBE PROPOSED PROGRAM: If proposal is to deepen or plug back, give data on present productive zone and proposed new productive
zone. If proposal is to drill or deepen directionally, give pertinent data on subsurface locations and measured and true vertical depths. Give blowout
preventer program, if any.

24.

SIGNED

W. Holcomb

TITLE Agent for Bannon Energy Inc. 7/25/89

(This space for Federal or State office use)

PERMIT NO.

APPROVAL DATE

APPROVED BY

CONDITIONS OF APPROVAL, IF ANY:

dk
Q

TITLE

APPROVED
AS AMENDED

OCT 24 1989
John Skell
AREA MANAGER

*See Instructions On Reverse Side

All distances must be from the outer boundaries of the Section.

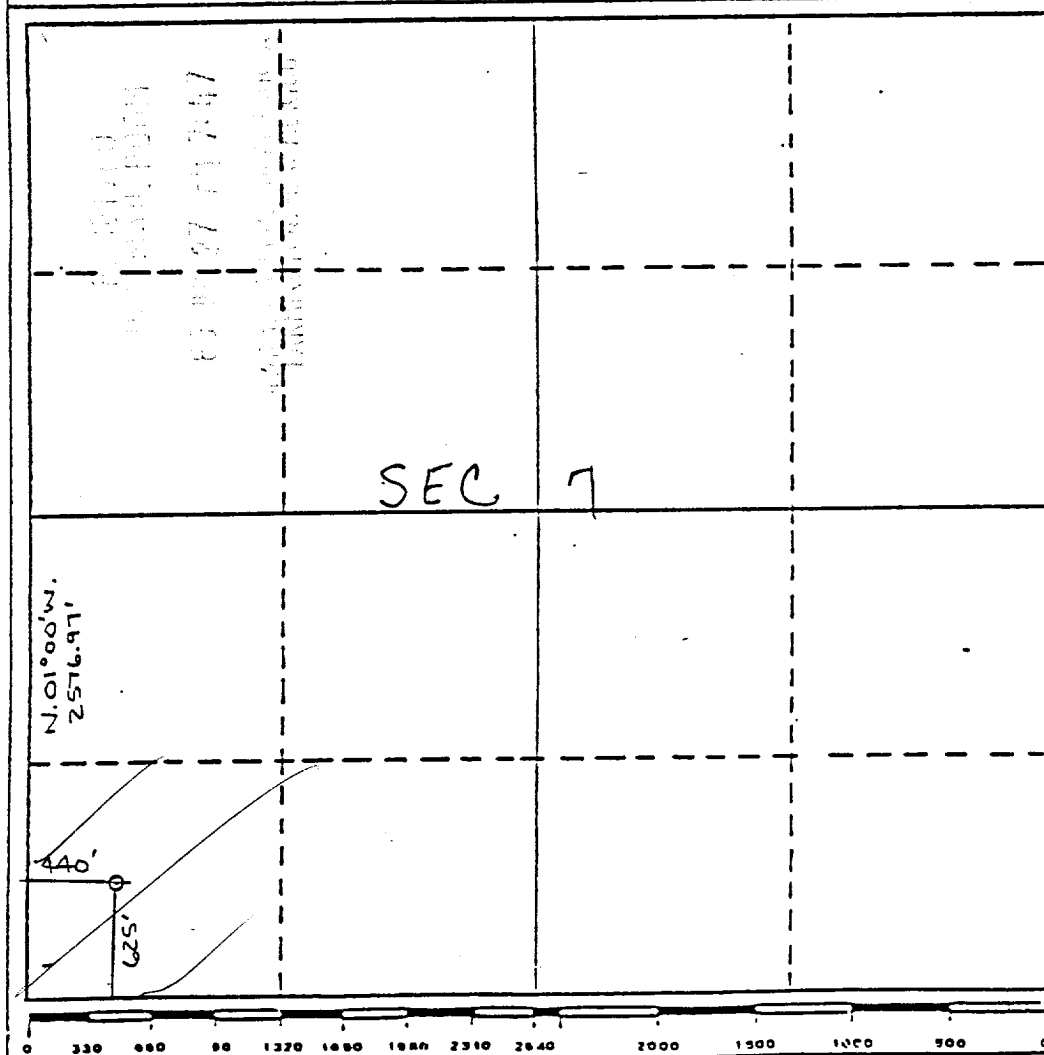
Bannon Energy, Inc.			Lease McBee		Well No. 43
Unit Letter M	Section 7	Township T-23-N	Range R-6-W	County Rio Arriba County	
Actual Footage Location of Well					
625		feet from the	South	line and	440
				feet from the	West
Ground Level Elev. 7007.2 ft.	Producing Formation Gallup		Pool Lybrook		Dedicated Acreage 40.65 Acres

1. Outline the acreage dedicated to the subject well by colored pencil or hachure marks on the plat below.
2. If more than one lease is dedicated to the well, outline each and identify the ownership thereof (both as to working interest and royalty).
3. If more than one lease of different ownership is dedicated to the well, have the interests of all owners been consolidated by communitization, unitization, force-pooling, etc?

☐ Yes ☐ No If answer is "yes," type of consolidation _____

If answer is "no," list the owners and tract descriptions which have actually been consolidated. (Use reverse side of this form if necessary.) _____

No allowable will be assigned to the well until all interests have been consolidated (by communitization, unitization, forced-pooling, or otherwise) or until a non-standard unit, eliminating such interests, has been approved by the Division.



CERTIFICATION

I hereby certify that the information contained herein is true and complete to the best of my knowledge and belief.

Name

Operating Agent

Position

Bannon Energy, Inc.

Company

July 21, 1989

Date

I hereby certify that the well location shown on this plat was plotted from field notes of actual surveys made by me or under my supervision, and that the same is true and correct to the best of my knowledge.

Date Surveyed

May 19, 1989

Registered and Surveyed

R. Howard Daggett

Certified Professional

NM #9879