

SUBMIT IN TRIPLICATE*
(Other instructions on
reverse side)Form approved.
Budget Bureau No. 42-R1425.UNITED STATES
DEPARTMENT OF THE INTERIOR
GEOLOGICAL SURVEY

APPLICATION FOR PERMIT TO DRILL, DEEPEN, OR PLUG BACK

1a. TYPE OF WORK

DRILL ☒DEEPEN ☐PLUG BACK ☐

b. TYPE OF WELL

OIL
WELL ☐GAS
WELL ☐

OTHER

Core Test for
Geol. DataSINGLE
ZONE ☐MULTIPLE
ZONE ☐

2. NAME OF OPERATOR

Tenneco Oil Company

3. ADDRESS OF OPERATOR

P. O. Box 1714, Durango, Colorado 81301

4. LOCATION OF WELL (Report location clearly and in accordance with any State requirements.)*

At surface 1630 FSL, 1555 FWL, Unit K
At proposed prod. zone

14. DISTANCE IN MILES AND DIRECTION FROM NEAREST TOWN OR POST OFFICE*

Cuba, New Mexico, 20 miles SW.

10. DISTANCE FROM PROPOSED*

LOCATION TO NEAREST
PROPERTY OR LEASE LINE, FT.
(Also to nearest drilg. unit line, if any)

18. DISTANCE FROM PROPOSED LOCATION*

TO NEAREST WELL, DRILLING, COMPLETED,
OR APPLIED FOR, ON THIS LEASE, FT.

16. NO. OF ACRES IN LEASE

19. PROPOSED DEPTH

1500'

17. NO. OF ACRES ASSIGNED
TO THIS WELL

None

20. ROTARY OR CABLE TOOLS

Rotary

21. ELEVATIONS (Show whether DF, RT, GR, etc.)

6459' Un.Gr.

22. APPROX. DATE WORK WILL START*

May 24, 1967

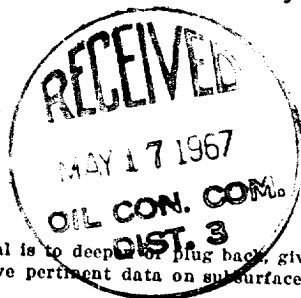
PROPOSED CASING AND CEMENTING PROGRAM

SIZE OF HOLE	SIZE OF CASING	WEIGHT PER FOOT	SETTING DEPTH	QUANTITY OF CEMENT
11"	8-5/8"		30'	10 SX

Well will be drilled to approximately 1500', to top of Mancos Shale. After coring program is completed, wells will be plugged or cased and completed as warranted by information. It is requested that no information (including locations) be released for a period of one year or at an earlier date if specified by Tenneco.

THIS WELL IS BEING DRILLED FOR INFORMATION ON
TEST-HOLE FOR INFORMATION ON
AND UNDER NO CIRCUMSTANCES WILL IT BE PRO-
DUCED.

CONFIDENTIAL



RECEIVED

MAY 16 1967

IN ABOVE SPACE DESCRIBE PROPOSED PROGRAM: If proposal is to deepen or plug back, give data on present productive zone and proposed new productive zone. If proposal is to drill or deepen directionally, give pertinent data on subsurface locations and measured and true vertical depths. Give blowout preventer program, if any.

U. S. GEOLOGICAL SURVEY

SIGNED

M. K. Wagner

TITLE

DATE May 12, 1967

(This space for Federal or State office use)

PERMIT NO.

APPROVAL DATE

APPROVED BY

CONDITIONS OF APPROVAL, IF ANY:

TITLE

DATE

5 USGS

1 File

*See Instructions On Reverse Side

NEW MEXICO OIL CONSERVATION COMMISSION
WELL LOCATION AND ACERAGE DEDICATION PLAT

All distances must be from the outer boundaries of the Section

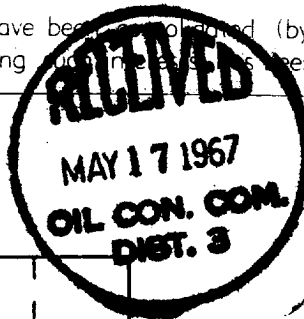
Operator TENNECO OIL COMPANY		Lease TORREON CORE HOLE		Well No 4
Unit Letter K	Section 29	Township 18 North	Range 3 West	County Sandoval
Actual Footage Location of Well: 1630 feet from the South line and 1555 feet from the West line				
Ground Level Elev. 6459' ungraded	Producing Formation Core Test	Pool Wildcat	Dedicated Acreage: Acres	

- Outline the acreage dedicated to the subject well by colored pencil or hatchure marks on the plat below.
- If more than one lease is dedicated to the well, outline each and identify the ownership thereof (both as to working interest and royalty).
- If more than one lease of different ownership is dedicated to the well, have the interests of all owners been consolidated by communitization, unitization, force-pooling, etc?

() Yes () No If answer is "yes," type of consolidation

If answer is "no," list the owners and tract descriptions which have actually consolidated. (Use reverse side of this form if necessary.)

No allowable will be assigned to the well until all interests have been consolidated (by communitization, unitization, forced-pooling, or otherwise) or until a non standard unit, eliminating all interests, has been approved by the Commission.



CERTIFICATION

I hereby certify that the information contained herein is true and complete to the best of my knowledge and belief.

Name M. K. Wagner

Position _____

Tenneco Oil Company

Company _____

May 12, 1967

Date _____

I hereby certify that the well location shown on this plat was plotted from field notes of actual surveys made by me or under my supervision, and that the same is true and correct to the best of my knowledge and belief.

3 May 1967

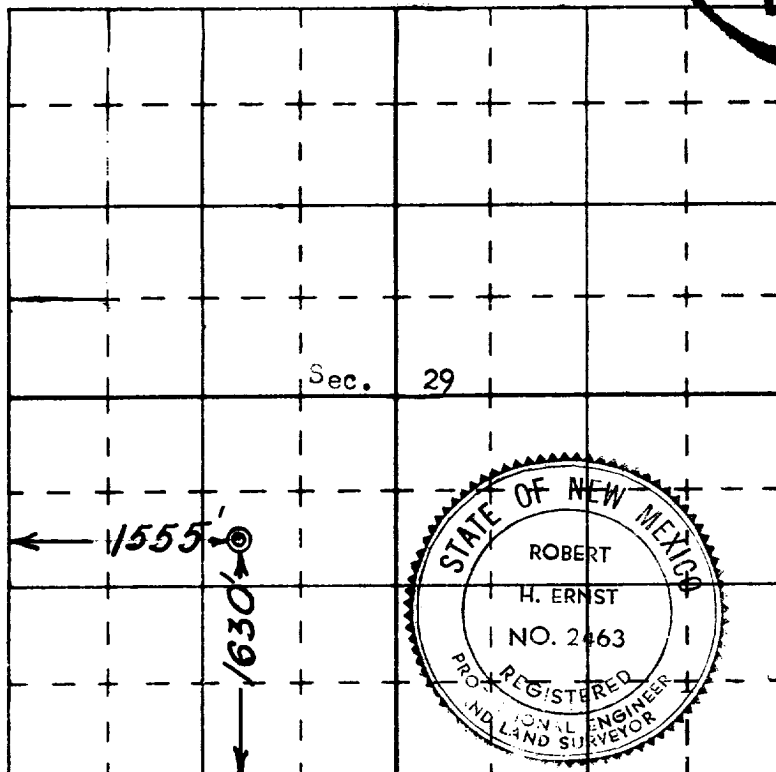
Date Surveyed _____

Registered Professional Engineer and/or Land Surveyor

Robert H. Ernst

N. Mex. PE & LS 2463

Certificate No. _____



Ernst Engineering Co.
Durango, Colorado

