

UNITED STATES
DEPARTMENT OF THE INTERIOR
GEOLOGICAL SURVEY

30-043-20091

5. LEASE DESIGNATION AND SERIAL NO.

Contract #420

6. IF INDIAN, ALLOTTEE OR TRIBE NAME

Picarilla

7. UNIT AGREEMENT NAME

8. FARM OR LEASE NAME

Parlay "A"

9. WELL NO.

2

10. FIELD AND POOL, OR WILDCAT

Parlay Mesaverde Eyt.

11. SEC., T., R., M., OR BLK.
AND SURVEY OR AREA

Sec. 29, T-22-N, R-3-W

12. COUNTY OR PARISH

Sandoval

13. STATE
New Mexico

APPLICATION FOR PERMIT TO DRILL, DEEPEN, OR PLUG BACK

1a. TYPE OF WORK

DRILL ☒DEEPEN ☐PLUG BACK ☐

b. TYPE OF WELL

OIL
WELL ☒GAS
WELL ☐

OTHER

SINGLE
ZONE ☐MULTIPLE
ZONE ☐

2. NAME OF OPERATOR

Tenneco Oil Company

3. ADDRESS OF OPERATOR

Suite 1200 Lincoln Tower Bldg.- Denver, Colo

4. LOCATION OF WELL (Report location clearly and in accordance with any State requirements.)
At surface

At proposed prod. zone 1980' F/WL and 660' F/SL

14. DISTANCE IN MILES AND DIRECTION FROM NEAREST TOWN OR POST OFFICE*

16. DISTANCE FROM PROPOSED*

LOCATION TO NEAREST
PROPERTY OR LEASE LINE, FT.
(Also to nearest drilg. unit line, if any)

16. NO. OF ACRES IN LEASE

17. NO. OF ACRES ASSIGNED
TO THIS WELL

80

18. DISTANCE FROM PROPOSED LOCATION*
TO NEAREST WELL, DRILLING, COMPLETED,
OR APPLIED FOR, ON THIS LEASE, FT.

19. PROPOSED DEPTH

4460

20. ROTARY OR CABLE TOOLS

Rotary

21. ELEVATIONS (Show whether DF, RT, GR, etc.)

7140' GR (Est.)

22. APPROX. DATE WORK WILL START*

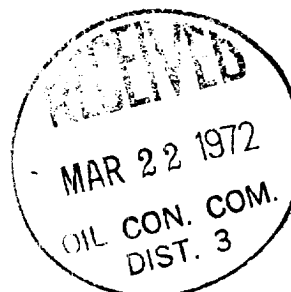
Upon Approval

23.

PROPOSED CASING AND CEMENTING PROGRAM

SIZE OF HOLE	SIZE OF CASING	WEIGHT PER FOOT	SETTING DEPTH	QUANTITY OF CEMENT
12-1/4	8-5/8	24	120	Suff. to circulate
7-7/8	5-1/2	15.5	4460	Suff. to fill 500' above shallowest pay zone.

Well to be drilled to approximate T.D. of 4460'; Log, and if commercial production is indicated, casing will be run to T.D., perforated and formation treated as necessary to establish commercial production. B.O.P. to be tested each 24 hours.

Note: Certified plat to follow:

RECEIVED

MAR 13 1972

U. S. GEOLOGICAL SURVEY
DURANGO, COLO.

IN ABOVE SPACE DESCRIBE PROPOSED PROGRAM. If proposal is to deepen or plug back, give data on present productive zone and proposed new productive zone. If proposal is to drill or deepen directionally, give pertinent data on subsurface locations and measured and true vertical depths. Give blowout preventer program, if any.

24.

SIGNED

TITLE Sr. Production Clerk

DATE 3/10/72

(This space for Federal or State office use)

PERMIT NO.

APPROVAL DATE

APPROVED

CONDITIONS OF APPROVAL, IF ANY:

MAR 20 1972

JERRY W. LONG
DISTRICT ENGINEER

TITLE

DATE

*See Instructions On Reverse Side

ORAL APP. 3/10/72

**NEW MEXICO OIL CONSERVATION COMMISSION
WELL LOCATION AND ACERAGE DEDICATION PLAT**

All distances must be from the outer boundaries of the Section

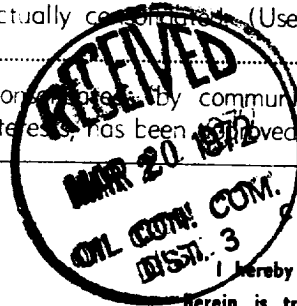
Operator TENNECO OIL COMPANY		Lease PARLAY		Well No. A-2
Unit Letter N	Section 29	Township 22 NORTH	Range 3 WEST	County SANDOVAL
Actual Footage Location of Well: 660 feet from the SOUTH line and 1980 feet from the WEST line				
Ground Level Elev. 7127.0	Producing Formation <i>Parlay M. v. Eyt</i> Undesignated Monofee	Pool <i>Parlay M. v. Eyt</i> Undesignated Monofee	Dedicated Acreage: 40 Acres	

1. Outline the acreage dedicated to the subject well by colored pencil or hatchure marks on the plat below.
2. If more than one lease is dedicated to the well, outline each and identify the ownership thereof (both as to working interest and royalty),
3. If more than one lease of different ownership is dedicated to the well, have the interests of all owners been consolidated by communization, unitization, force-pooling, etc?

() Yes () No If answer is "yes," type of consolidation

If answer is "no," list the owners and tract descriptions which have actually been consolidated. (Use reverse side of this form if necessary.)

No allowable will be assigned to the well until all interests have been consolidated by communization, unitization, forced-pooling, or otherwise) or until a non standard unit, eliminating such interest, has been approved by the Commission.



CERTIFICATION

I hereby certify that the information contained herein is true and complete to the best of my knowledge and belief.

Name *G. A. Ford*
G. A. Ford

Position
Sr. Production Clerk

Company
Tenneco Oil Company

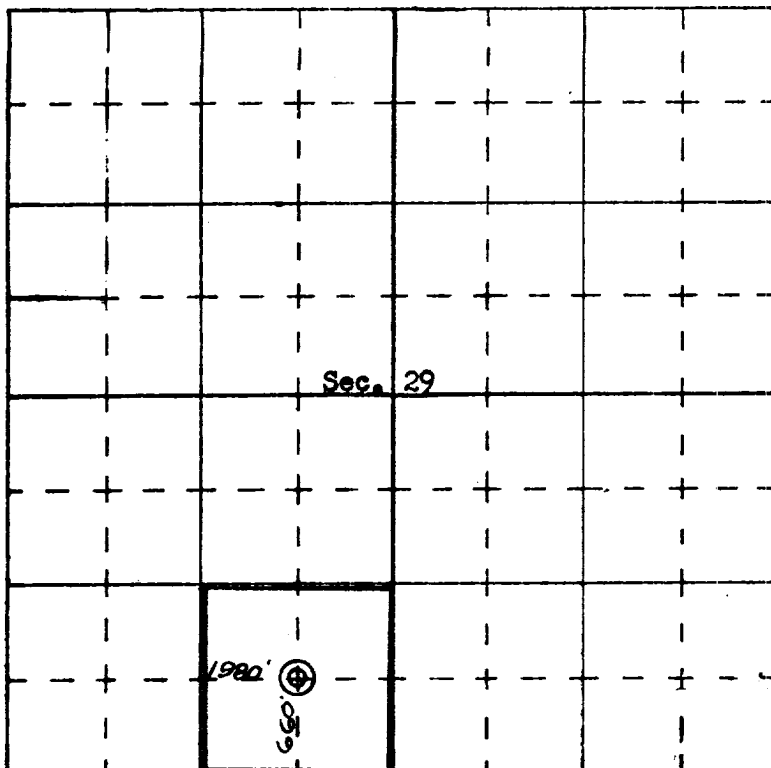
Date
3/17/72

I hereby certify that the well location shown on this plat was plotted from field notes of actual surveys made by me or under my supervision, and that the same is true and correct to the best of my knowledge and belief.

Date Surveyed **11 March, 1972**
[Signature]
Registered Professional Engineer
and/or Land Surveyor

JAMES P. LEESE

1463
Certificate No.



N

SCALE—4 INCHES EQUALS 1 MILE