

NEW MEXICO OIL CONSERVATION COMMISSION
WELL LOCATION AND ACREAGE DEDICATION PLAT

Form O-102
Supersedes C-128
Effective 1-1-65

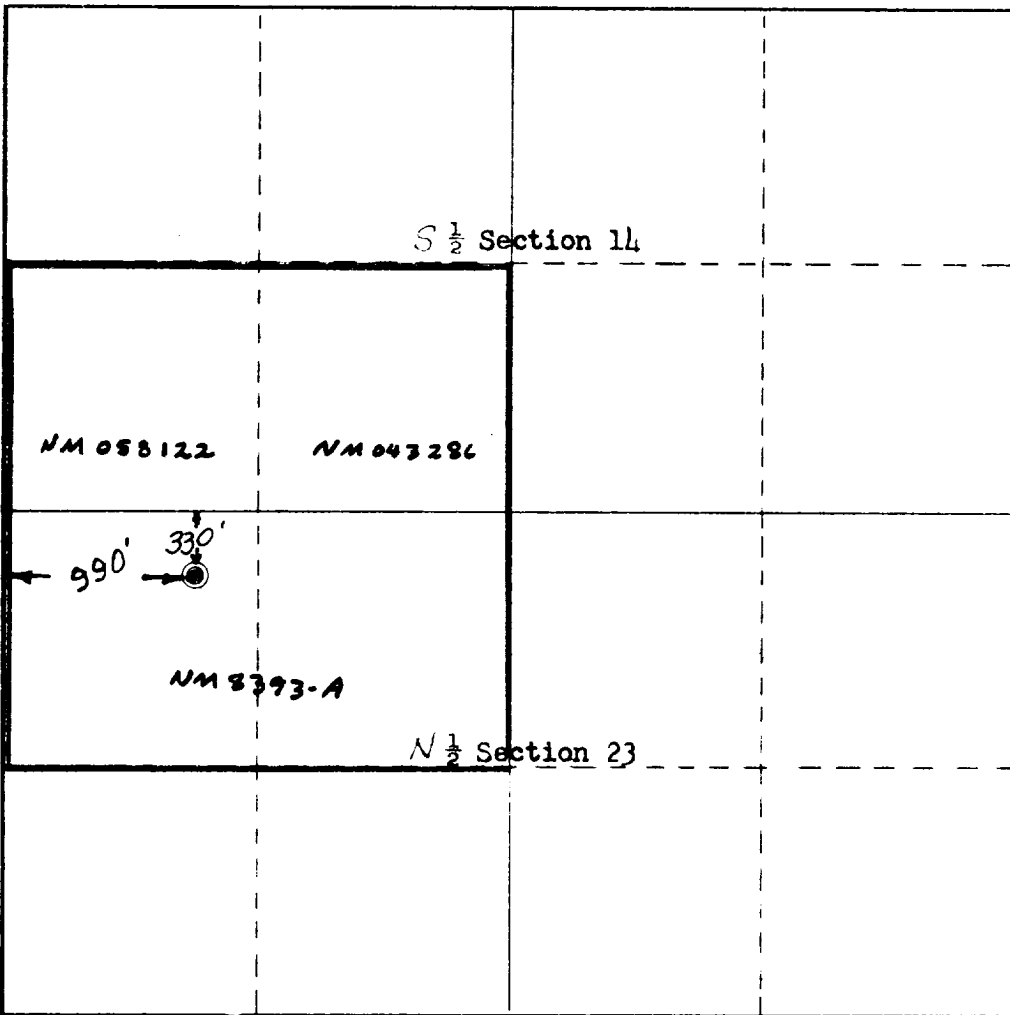
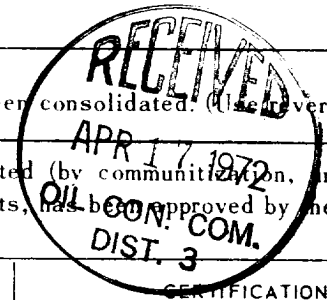
All distances must be from the outer boundaries of the Section

Operator Fluid Power Pump Company		Lease Fluid Power Pump Co		Well No. 6
Unit Letter D	Section 23	Township 19 North	Range 3 West	County Sandoval
Actual Footage Location of Well: 330 feet from the North line and 990 feet from the West line				
Ground Level Elev. 6862	Producing Formation Entrada	Pool Media	Dedicated Acreage: 160 Acres	

1. Outline the acreage dedicated to the subject well by colored pencil or hachure marks on the plat below.
2. If more than one lease is dedicated to the well, outline each and identify the ownership thereof (both as to working interest and royalty).
SEE ATTACHED SHEET
3. If more than one lease of different ownership is dedicated to the well, have the interests of all owners been consolidated by communitization, unitization, force-pooling, etc? **COMMUNITIZATION AGREEMENT IN PROCESS ON NON-STANDARD UNIT APPROVED BY OIL CONSERVATION COMMISSION**
 Yes No If answer is "yes," type of consolidation _____

If answer is "no," list the owners and tract descriptions which have actually been consolidated. (Use reverse side of this form if necessary.) _____

No allowable will be assigned to the well until all interests have been consolidated (by communitization, unitization, forced-pooling, or otherwise) or until a non-standard unit, eliminating such interests, has been approved by the Commission.



CERTIFICATION

I hereby certify that the information contained herein is true and complete to the best of my knowledge and belief.

Val R. Reese
Name
VAL R. REESE

Position
Consulting Geologist

Company
FLUID POWER PUMP COMPANY

Date
April 11, 1972

I hereby certify that the well location shown on this plat was plotted from field notes of actual surveys made by me or under my supervision, and that the same is true and correct to the best of my knowledge and belief.

Date Surveyed
April 9, 1972

Registered Professional Engineer and Land Surveyor
Ed. P. [Signature]

Certificate No.
3084

