

UNITED STATES
DEPARTMENT OF THE INTERIOR
GEOLOGICAL SURVEY

30-043-20108

5. LEASE ORIGINATOR AND SERIAL NO.

413

6. IF INDIAN, ALLOTTEE OR TRIBE NAME

JICARILLA

7. UNIT AGREEMENT NAME

8. FARM OR LEASE NAME

CHACON JICARILLA

9. WELL NO.

4

10. FIELD AND POOL, OR WILDCAT

BALLARD P.C. ext

11. SEC., T., R., M., OR BLK.
AND SURVEY OR AREA

22, T23N, R-3W

12. COUNTY OR PARISH

SANDOVAL

13. STATE

N.M.

APPLICATION FOR PERMIT TO DRILL, DEEPEN, OR PLUG BACK

1a. TYPE OF WORK

DRILL ☒DEEPEN ☐PLUG BACK ☐

b. TYPE OF WELL

OIL
WELL ☐GAS
WELL ☒OTHER ☐SINGLE
ZONE ☒MULTIPLE
ZONE ☐

2. NAME OF OPERATOR

EXECUTIVE OIL & GAS DEVELOPMENT CORPORATION

3. ADDRESS OF OPERATOR

P. O. BOX 2026, FARMINGTON, NEW MEXICO 87401

4. LOCATION OF WELL (Report location clearly and in accordance with any State requirements.)*

At surface

1850' FWL, 790' FNL

At proposed prod. zone

SAME

14. DISTANCE IN MILES AND DIRECTION FROM NEAREST TOWN OR POST OFFICE*

20 MILES NORTH OF CUBA, NEW MEXICO

15. DISTANCE FROM PROPOSED*

790'

LOCATION TO NEAREST

PROPERTY OR LEASE LINE, FT.

(Also to nearest drlg. unit line, if any)

18. DISTANCE FROM PROPOSED LOCATION*

TO NEAREST WELL, DRILLING, COMPLETED,
OR APPLIED FOR, ON THIS LEASE, FT.

1900'

16. NO. OF ACRES IN LEASE

1280

17. NO. OF ACRES ASSIGNED

TO THIS WELL

160

20. ROTARY OR CABLE TOOLS

ROTARY

21. ELEVATIONS (Show whether DF, RT, GR, etc.)

7401' GR.

22. APPROX. DATE WORK WILL START*

6-1-73

23.

PROPOSED CASING AND CEMENTING PROGRAM

SIZE OF HOLE	SIZE OF CASING	WEIGHT PER FOOT	SETTING DEPTH	QUANTITY OF CEMENT
12 1/4	9 5/8	32.30	120'	50 SACKS
7 7/8	4 1/2	9.5	3500'	100 SACKS

IT IS INTENDED TO DRILL THIS WELL TO 3500', RUN 4 1/2" CASING TO
TOTAL DEPTH, PERFORATE AND SAND WATER FRAC THE PICTURED CLIFFS SANDSTONE.



IN ABOVE SPACE DESCRIBE PROPOSED PROGRAM: If proposal is to deepen or plug back, give data on present productive zone and proposed new productive zone. If proposal is to drill or deepen directionally, give pertinent data on subsurface locations and measured and true vertical depths. Give blowout preventer program, if any.

24.

SIGNED Steve M. ShumoffTITLE PRESIDENTDATE 5-16-73

(This space for Federal or State office use)

PERMIT NO. _____

APPROVAL DATE _____

APPROVED BY SA

TITLE _____

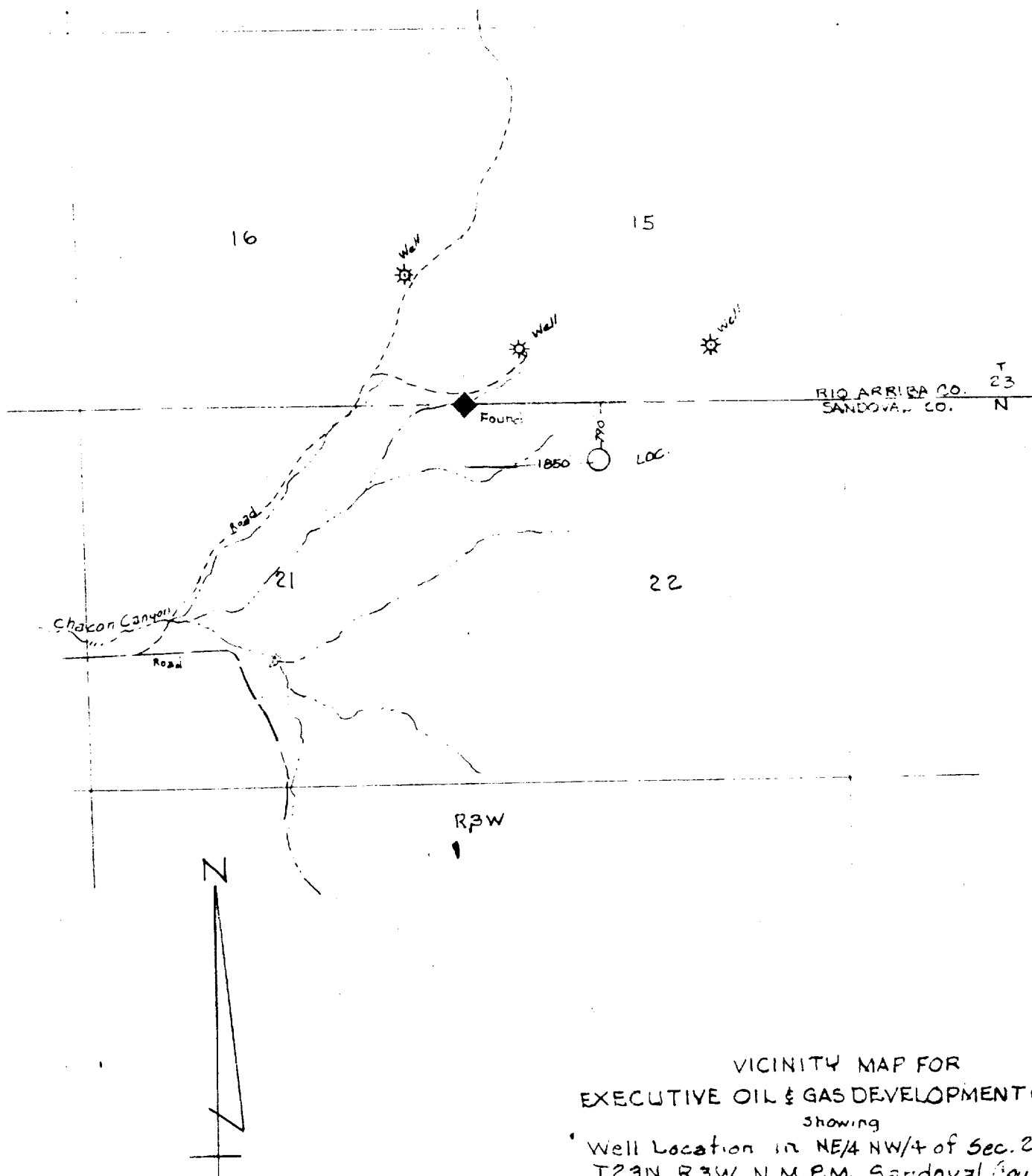
DATE _____

CONDITIONS OF APPROVAL, IF ANY:

MAY 17 1973

*See Instructions On Reverse Side

U. S. GEOLOGICAL SURVEY
WASHINGTON, D. C.



VICINITY MAP FOR
 EXECUTIVE OIL & GAS DEVELOPMENT CORP.
 Showing
 Well Location in NE/4 NW/4 of Sec. 22,
 T23N, R3W, N.M.P.M., Sandoval County,
 New Mexico
 scale: 1" = 2000' date: 2 May, 1973

San Juan Engineering Company

Farmington, New Mexico

**NEW MEXICO OIL CONSERVATION COMMISSION
WELL LOCATION AND ACERAGE DEDICATION PLAT**

All distances must be from the outer boundaries of the Section

Operator EXECUTIVE OIL & GAS DEVELOPMENT CORP.			Lease CHACON JICARILLA		Well No. 4
Unit Letter C	Section 22	Township 23 NORTH	Range 3 WEST	County SANDOVAL	
Actual Footage Location of Well: 790 feet from the NORTH line and 1850 feet from the WEST line					
Ground Level Elev. 7401.0	Producing Formation Pictured Cliffs	Pool Ballard PC EXT		Dedicated Acreage: 160	Acres

1. Outline the acreage dedicated to the subject well by colored pencil or hachure marks on the plat below.
2. If more than one lease is dedicated to the well, outline each and identify the ownership thereof (with its ownership interest and royalty).
3. If more than one lease of different ownership is dedicated to the well, have the interests of all owners been consolidated by communitization, unitization, force-pooling, etc?

() Yes (X) No If answer is "yes," type of consolidation

If answer is "no," list the owners and tract descriptions which have actually consolidated. (Use reverse side of this form if necessary.)

No allowable will be assigned to the well until all interests have been consolidated (by communitization, unitization, forced-pooling, or otherwise) or until a non standard unit, eliminating such interests, has been approved by the Commission.



CERTIFICATION

I hereby certify that the information contained herein is true and complete to the best of my knowledge and belief.

Dave M. Thomas Jr.
Name

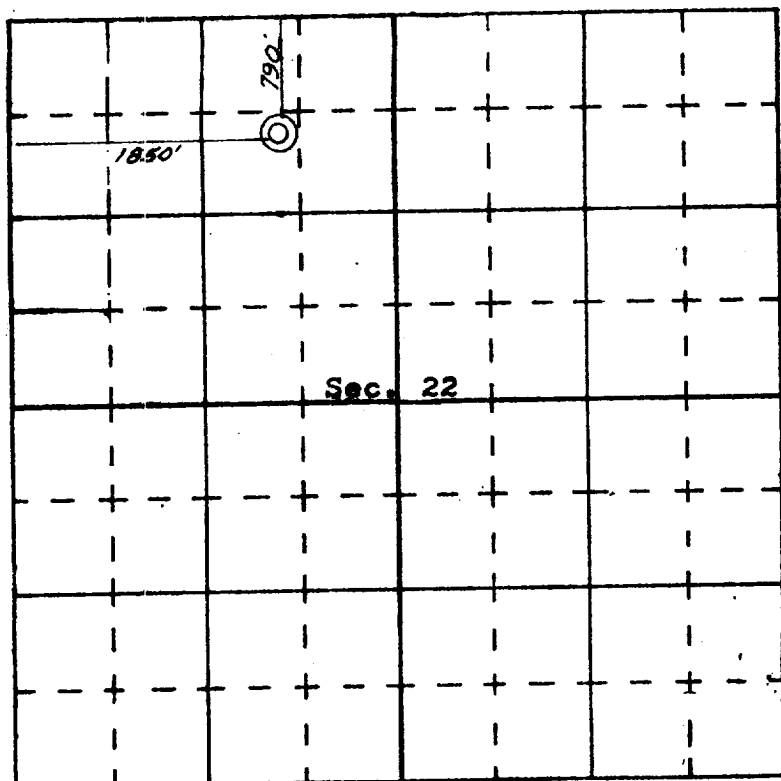
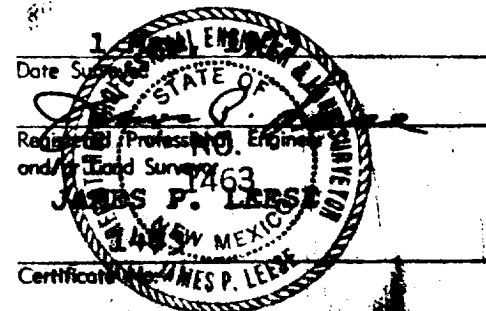
Dave M. Thomas Jr.
Position

President
Company

Executive Oil & Gas Dev. Corp.
Date

5-15-73

I hereby certify that the well location shown on this plat was plotted from field notes of actual surveys made by me or under my supervision, and that the same is true and correct to the best of my knowledge and belief.



SCALE—4 INCHES EQUALS 1 MILE

SAN JUAN ENGINEERING COMPANY, FARMINGTON, N. M.