

**UNITED STATES
DEPARTMENT OF THE INTERIOR
GEOLOGICAL SURVEY**

APPLICATION FOR PERMIT TO DRILL, DEEPEN, OR PLUG BACK

1a. TYPE OF WORK

DRILL ☒DEEPEN ☐

b. PROPOSED

Enace Oil Company, Inc.

ADDRESS OF OPERATOR

313 Washington, S.E., Albuquerque, N. M. 87108

4. LOCATION OF WELL (Report location clearly and in accordance with any State requirements.)*

At surface

Unit "A" 800' NL & 800' EL

At proposed prod. zone

Same

14. DISTANCE IN MILES AND DIRECTION FROM NEAREST TOWN OR POST OFFICE*

9 miles SW of Lybrook N. M.

15. DISTANCE FROM PROPOSED* LOCATION TO NEAREST PROPERTY OR LEASE LINE, FT.

(Also to nearest drlg. unit line, if any)

800 Ft.

18. NO. OF ACRES IN LEASE

160

17. NO. OF ACRES ASSIGNED TO THIS WELL

160

18. DISTANCE FROM PROPOSED* LOCATION TO NEAREST WELL, DRILLING, COMPLETED, OR APPLIED FOR, ON THIS LEASE, FT.

1600'

19. PROPOSED DEPTH

2000'

20. ROTARY OR CABLE TOOLS

Rotary

21. ELEVATIONS (Show whether DF, RT, GR, etc.)

6950' GR

22. APPROX. DATE WORK WILL START*

Jan. 5, 1976

23.

PROPOSED CASING AND CEMENTING PROGRAM

SIZE OF HOLE	SIZE OF CASING	WEIGHT PER FOOT	SETTING DEPTH	QUANTITY OF CEMENT
12½	8 5/8	24#	100'	60 SXS

Set 100' 8 5/8" surface pipe to drill 7 7/8" hole to 2000', using a mud sufficient for conditioning hole and logging. Run Induction and Gamma Density log. Set 4½" 10.5# production string. Perforate, frac with 60,000# 10-20 sand and slick water. Complete as gas well.

IN ABOVE SPACE DESCRIBE PROPOSED PROGRAM: If proposal is to deepen or plug back, give data on present productive zone and proposed new productive zone. If proposal is to drill or deepen directionally, give pertinent data on subsurface locations and measured and true vertical depths. Give blowout preventer program if any.

24.

SIGNED

Ray McCarry

TITLE

President

DATE

12-16-75

(This space for Federal or State office use)

PERMIT NO.

APPROVAL DATE

APPROVED BY

TITLE

DATE

REMARKS (If any)

*ok**St.*

*See Instructions On Reverse Side

NEW MEXICO OIL CONSERVATION COMMISSION
WELL LOCATION AND ACREAGE DEDICATION PLAT

Form 1-1
Supersedes C-128
Effective 1-1-61

All distances must be from the outer boundaries of the Section

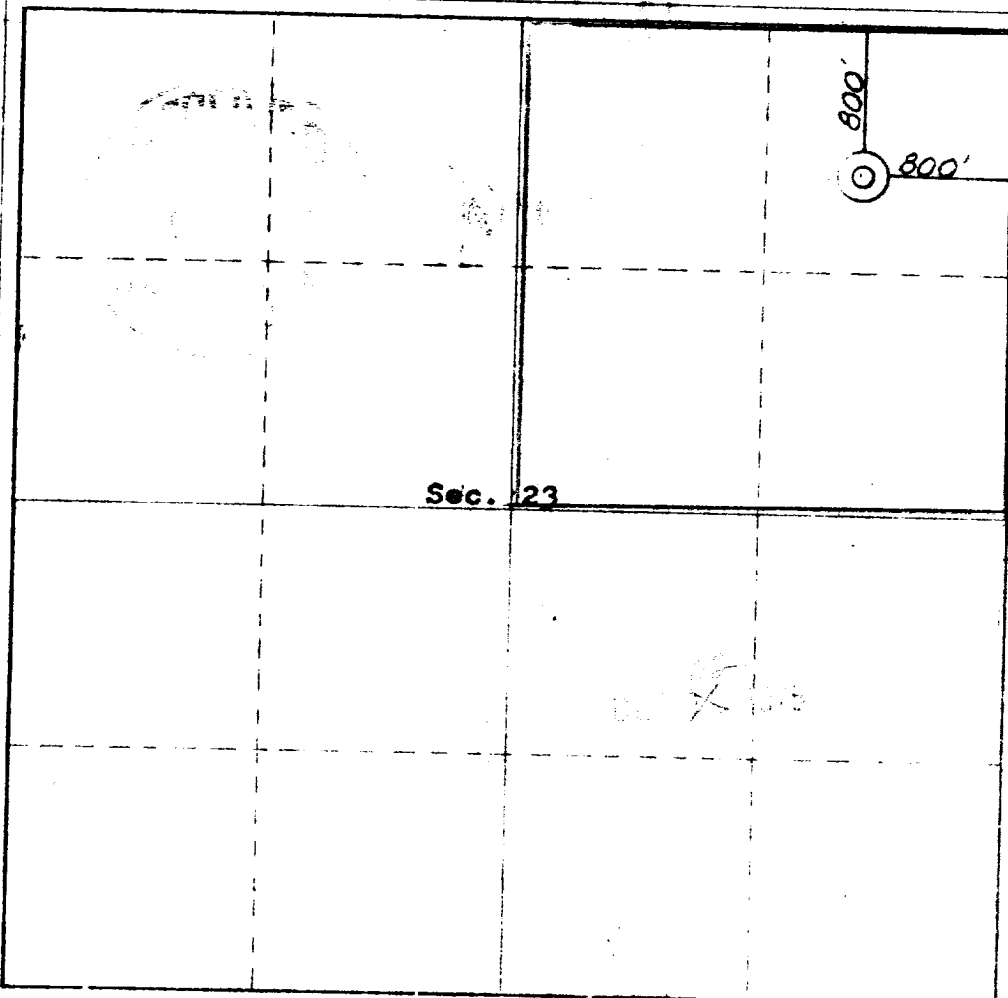
CHACE OIL COMPANY			Lease NOO-C-14-20-5358 RUSTY NAVAJO		1
Section	Township	Range	County		
23	22 NORTH	7 WEST	SANDOVAL		
800 feet from the NORTH line and 800 feet from the EAST line					
6950	Producing Formation La Fontaine Chacra	Pool Rusty Chacra <i>Indesegated</i>	Dedicated Acreage 160		

- Outline the acreage dedicated to the subject well by colored pencil or hatchure marks on the plat below.
- If more than one lease is dedicated to the well, outline each and identify the ownership thereof (both as to working interest and royalty).
- If more than one lease of different ownership is dedicated to the well, have the interests of all owners been consolidated by communitization, unitization, force-pooling, etc?

☐ Yes ☐ No If answer is "yes," type of consolidation _____

If answer is "no," list the owners and tract descriptions which have actually been consolidated. (Use reverse side of this form if necessary.) _____

No allowable will be assigned to the well until all interests have been consolidated (by communitization, unitization, forced-pooling, or otherwise) or until a non-standard unit, eliminating such interests, has been approved by the Commission.



CERTIFICATION

I hereby certify that the information contained herein is true and complete to the best of my knowledge and belief.

Royce McCary
Name Royce McCary

Position President

Company Chace Oil Company

Date 12-16-75

I hereby certify that the well location shown on this plat was plotted from field notes of actual surveys made by me or under my supervision and that the same is true and correct to the best of my knowledge and belief.

NO. 1463
NEW MEXICO
WELL LEASE

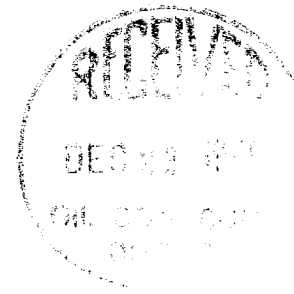
2 December, 1975

James P. Lease
James P. Lease

1463

DEVELOPMENT PLAN FOR SURFACE RESUME

Chace Oil Co. # Rusty Navajo
Unit "A" 800 FNL & 800 FEL
T-22-N, R7W



1. Location and vicinity map, San Juan Engineering Company
Exit Hwy. 44 at Lybrook.
2. 300' of new road to be compacted to connect drill site with existing area
roads - Road width to be 20'.
3. well site is 1600' south of the Rusty Federal #3 in Unit P,
Section 14, T-22-N, R-7-W.
4. Roads shown on vicinity plat and location plat.
5. In case of production (gas) well will be tied into a gathering line, but
market has not been established. No tank batteries or separators are
anticipated at this time.
6. water to come from private source at Escrito Trading Post.
7. All trash and waste material will be placed in the mud pit and covered.
No additional surface to be used, such as air strips or campsites.
8. None
9. none
10. Rig layout shown on township plat attached.
11. The topography is flat, covered with blow sand and sagebrush.
12. Drilling pad to be compacted.
13. After well completion, location to be restored to original condition less
a few sagebrush, no other vegetation seems to grow at this location.
14. Field representative to contact is Royce McCary, Telephone 266-5562 at
313 Washington, S.E., Albuquerque, New Mexico, 87108.

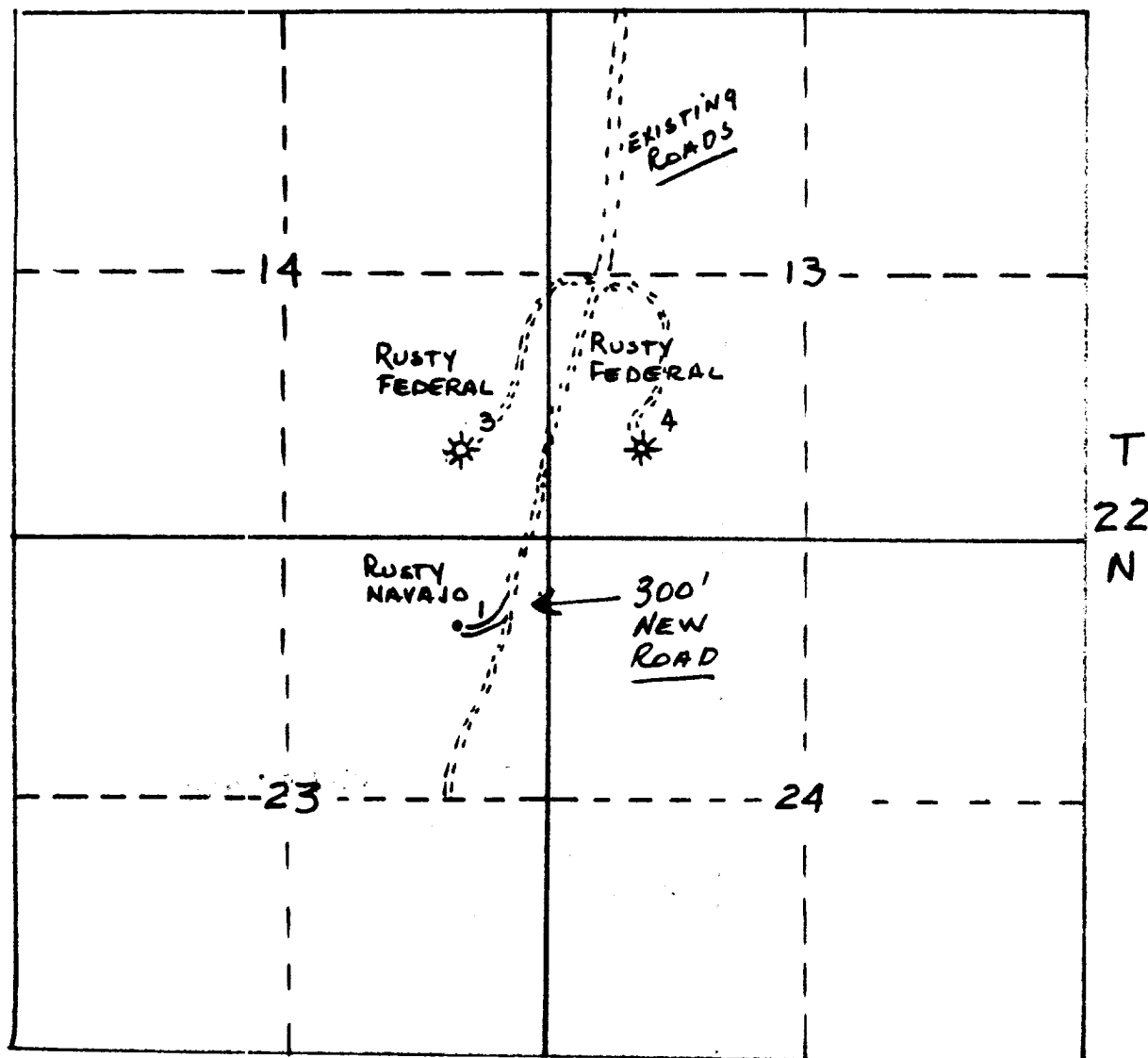
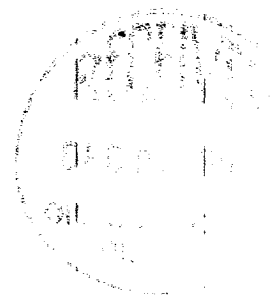


CHACE OIL COMPANY, INC.

313 Washington S.E.

Albuquerque, New Mexico 87108

(505) 266-5562



R 7 W

SANDOVAL CO.
N.M.

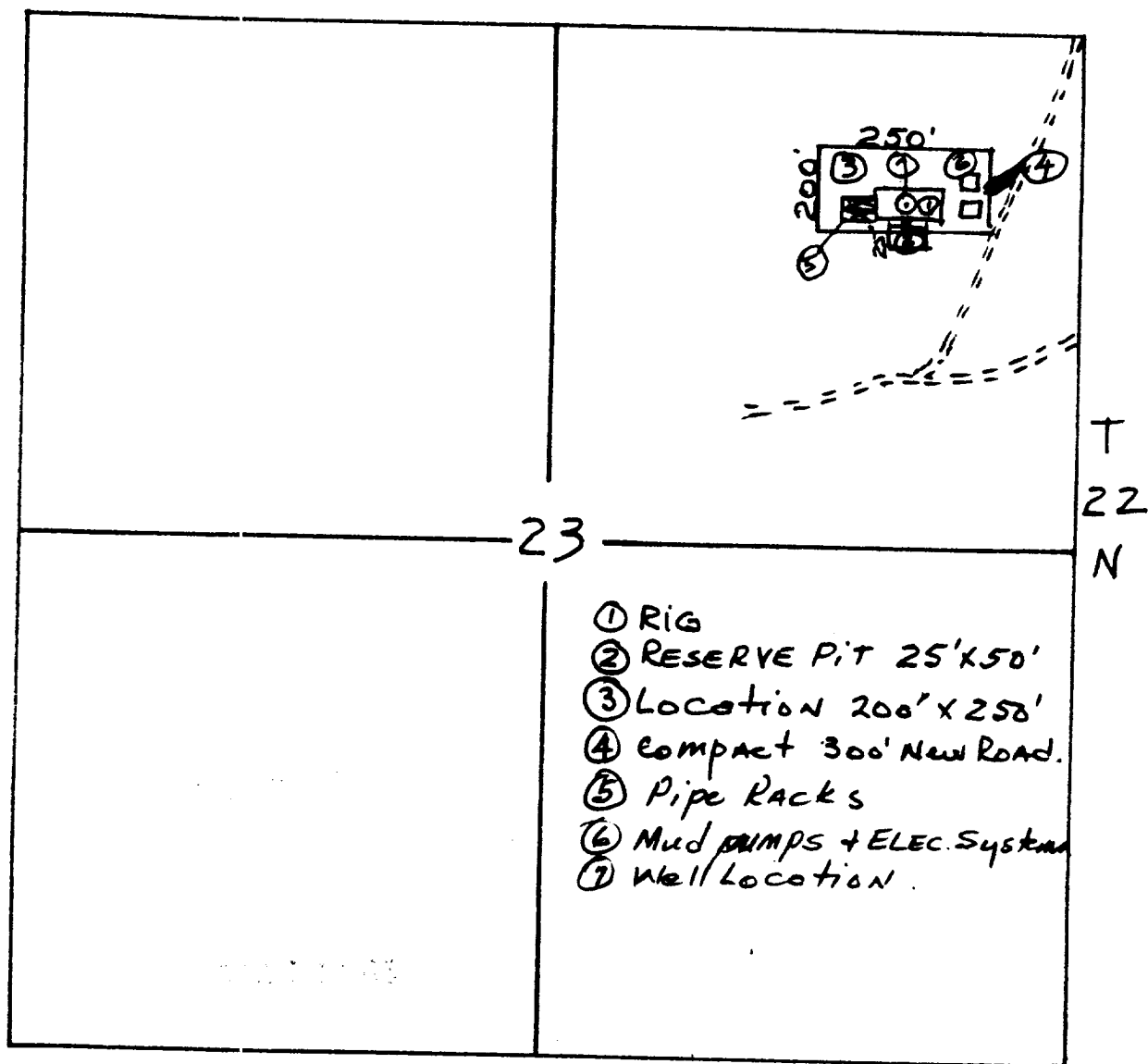
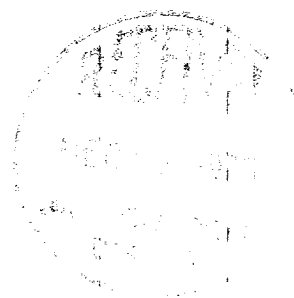
22
X 1908

CHACE OIL COMPANY, INC.

313 Washington S.E.

Albuquerque, New Mexico 87108

(505) 266-5562



R 7 W

SANDOVAL CO.
N. M.