

UNITED STATES
DEPARTMENT OF THE INTERIOR

GEOLOGICAL SURVEY *ARI 40-043-20230*

APPLICATION FOR PERMIT TO DRILL, DEEPEN, OR PLUG BACK

1a. TYPE OF WORK

DRILL ☒

DEEPEN ☐

PLUG BACK ☐

b. TYPE OF WELL

OIL
WELL ☐

GAS
WELL ☒

OTHER

SINGLE
ZONE ☒

MULTIPLE
ZONE ☐

2. NAME OF OPERATOR

Jack A. Cole

3. ADDRESS OF OPERATOR

P. O. Box 191, Farmington, New Mexico 87401

4. LOCATION OF WELL (Report location clearly and in accordance with any State requirements.)*

At surface

1450/S and 1450/E Sec. 28-T23N-R4W

At proposed prod. zone

Same

14. DISTANCE IN MILES AND DIRECTION FROM NEAREST TOWN OR POST OFFICE*

70 Miles Southeast Bloomfield, New Mexico

15. DISTANCE FROM PROPOSED*

LOCATION TO NEAREST
PROPERTY OR LEASE LINE, FT.
(Also to nearest drlg. unit line, if any)

18. DISTANCE FROM PROPOSED LOCATION*
TO NEAREST WELL, DRILLING, COMPLETED,
OR APPLIED FOR, ON THIS LEASE, FT.

2600'

16. NO. OF ACRES IN LEASE

1920

19. PROPOSED DEPTH

2800

17. NO. OF ACRES ASSIGNED
TO THIS WELL

160

20. ROTARY OR CABLE TOOLS

Rotary

21. ELEVATIONS (Show whether DF, RT, GR, etc.)

6975 GR 6985 DF

22. APPROX. DATE WORK WILL START*

July 10, 1976

PROPOSED CASING AND CEMENTING PROGRAM

SIZE OF HOLE	SIZE OF CASING	WEIGHT PER FOOT	SETTING DEPTH	QUANTITY OF CEMENT
12 1/4	8 5/8	24.0	120'	Circulate
7 7/8	4 1/2	10.5	2800	150 Sacks

Well will be mud drilled with rotary tools after setting and cementing 8 5/8" surface casing. Run electric logs at total depth and set 4 1/2" casing if warranted, cementing same with 150 sacks. Sand-water frac. Treat down casing through perforations opposite Pictured Cliffs sand. Run 1" tubing for production string to produce as a Pictured Cliffs natural gas well.

Gas not dedicated
IN ABOVE SPACE DESCRIBE PROPOSED PROGRAM: If proposal is to deepen or plug back, give data on present productive zone and proposed new productive zone. If proposal is to drill or deepen directionally, give pertinent data on subsurface locations and measured and true vertical depths. Give blowout preventer program, if any.

24. SIGNED *Jack A. Cole* TITLE Operator DATE June 8, 1976

(This space for Federal or State office use)

PERMIT NO. _____ APPROVAL DATE _____

APPROVED BY _____ TITLE _____ DATE _____

CONDITIONS OF APPROVAL, IF ANY:

Cliff

*See Instructions On Reverse Side

NEW MEXICO OIL CONSERVATION COMMISSION
WELL LOCATION AND ACREAGE DEDICATION PLAT

Form C-102
Supersedes C-128
Effective 1-1-65

All distances must be from the outer boundaries of the Section.

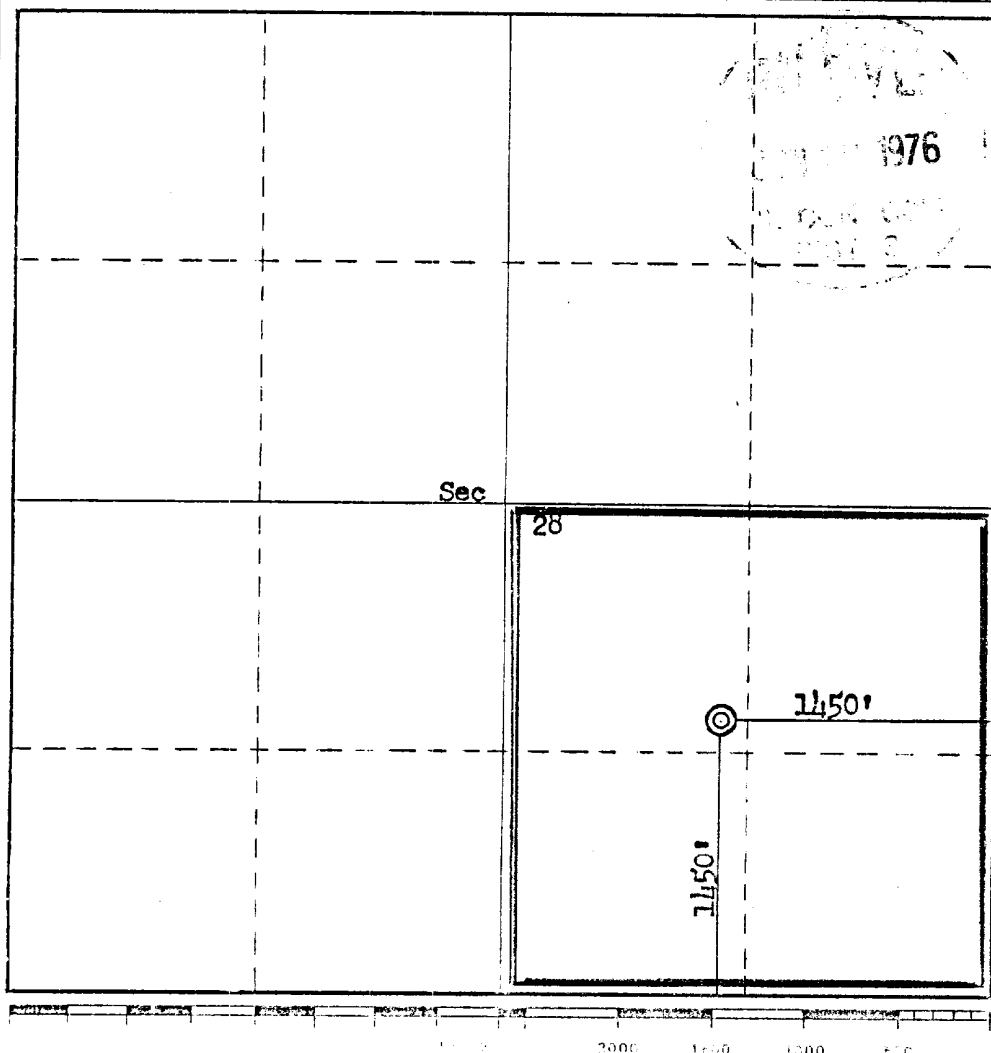
Operator Jack A. Cole		Lease Apache Flats		Well No. 11
Unit Letter J	Section 28	Township 23N	Range 4W	County Sandoval
Actual Footage Location of Well: 1450 feet from the South line and 1450 feet from the East line				
Ground Level Elev. 6975	Producing Formation Pictured Cliffs	Pool Undesignated Wildcat	Dedicated Acreage: 160 Acres	

1. Outline the acreage dedicated to the subject well by colored pencil or hachure marks on the plat below.
2. If more than one lease is dedicated to the well, outline each and identify the ownership thereof (both as to working interest and royalty).
3. If more than one lease of different ownership is dedicated to the well, have the interests of all owners been consolidated by communitization, unitization, force-pooling, etc?

☐ Yes ☐ No If answer is "yes," type of consolidation _____

If answer is "no," list the owners and tract descriptions which have actually been consolidated. (Use reverse side of this form if necessary.) _____

No allowable will be assigned to the well until all interests have been consolidated (by communitization, unitization, forced-pooling, or otherwise) or until a non-standard unit, eliminating such interests, has been approved by the Commission.



CERTIFICATION

I hereby certify that the information contained herein is true and complete to the best of my knowledge and belief.

Jack A. Cole
Name

Jack A. Cole

Position

Operator

Company

Date

June 8, 1976

I hereby certify that the well location shown on this plat was plotted from field notes of actual surveys made by me or under my supervision, and that the same is true and correct to the best of my knowledge and belief.

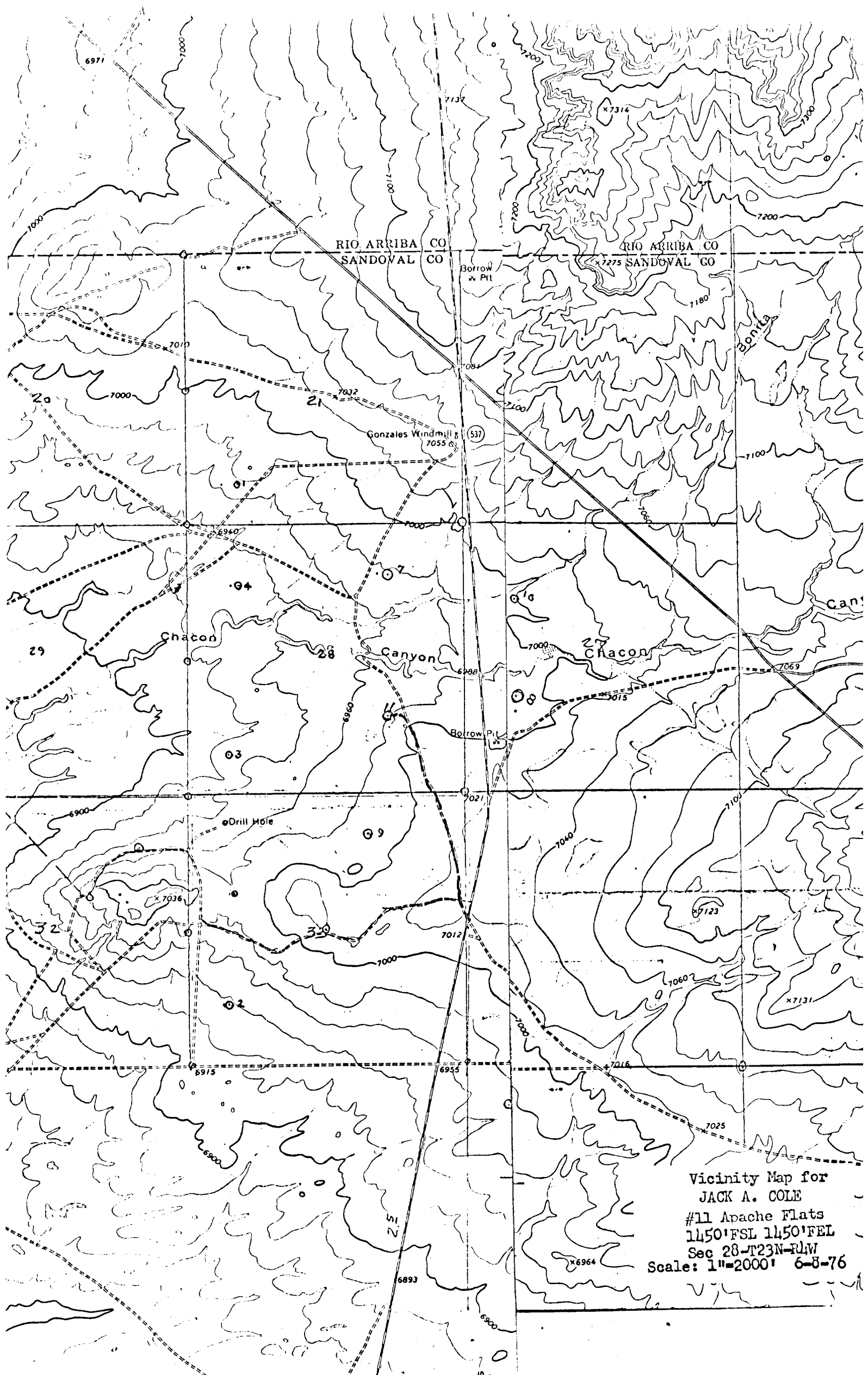
Date Surveyed

June 8, 1976

Registered Professional Engineer
and/or Land Surveyor

Fred B. Kerr Jr.
Fred B. Kerr Jr.

Certificate No.



Vicinity Map for
JACK A. COLE
#11 Apache Flats
1450' FSL 1450' FEL
Sec 28-T23N-R1W
Scale: 1"=2000' 6-8-76