

UNITED STATES  
DEPARTMENT OF THE INTERIOR  
GEOLOGICAL SURVEY

## APPLICATION FOR PERMIT TO DRILL, DEEPEN, OR PLUG BACK

## 1a. TYPE OF WORK

DRILL ☒DEEPEN ☐PLUG BACK ☐

## b. TYPE OF WELL

OIL  
WELL ☒GAS  
WELL ☐

OTHER

SINGLE  
ZONE ☒MULTIPLE  
ZONE ☐

## 2. NAME OF OPERATOR

Filon Exploration Corporation

## 3. ADDRESS OF OPERATOR c/o Minerals Management, Inc.

501 Airport Dr., Suite 105, Farmington, N.M. 87401

## 4. LOCATION OF WELL (Report location clearly and in accordance with any State requirements.)\*

At surface

D 330' FNL, 330' FWL, SEC. 7, T21N, R6W

At proposed prod. zone

## 14. DISTANCE IN MILES AND DIRECTION FROM NEAREST TOWN OR POST OFFICE\*

14 miles S/SE of Counselors Trading Post, N.M.

## 15. DISTANCE FROM PROPOSED\*

LOCATION TO NEAREST  
PROPERTY OR LEASE LINE, FT.  
(Also to nearest drlg. unit line, if any)

330'

## 16. NO. OF ACRES IN LEASE

598.68

17. NO. OF ACRES ASSIGNED  
TO THIS WELL

40

18. DISTANCE FROM PROPOSED LOCATION\*  
TO NEAREST WELL, DRILLING, COMPLETED,  
OR APPLIED FOR, ON THIS LEASE, FT.

-

## 19. PROPOSED DEPTH

6500'

## 20. ROTARY OR CABLE TOOLS

Rotary

## 21. ELEVATIONS (Show whether DF, RT, GR, etc.)

6762' GR

## 22. APPROX. DATE WORK WILL START\*

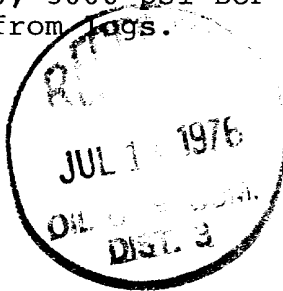
August 10, 1976

## 23.

## PROPOSED CASING AND CEMENTING PROGRAM

SIZE OF HOLE	SIZE OF CASING	WEIGHT PER FOOT	SETTING DEPTH	QUANTITY OF CEMENT
15"	10 3/4"	40.50#	200'	200 sx
8 3/4"	7"	23-26#	6250'	500-700 sx
6 1/4"	4 1/2"	10.50#	6500'	50 sx

Operator proposes to drill a Jurassic test to 6500'. A low solids mud will be used to drill 8 3/4" hole. If casing is run, a liner will be set from TD with 150' overlap inside of 7" casing. A Series 900, 3000 psi BOP will be used. Completion data to be determined from logs.



IN ABOVE SPACE DESCRIBE PROPOSED PROGRAM: If proposal is to deepen or plug back, give data on present productive zone and proposed new productive zone. If proposal is to drill or deepen directionally, give pertinent data on subsurface locations and measured and true vertical depths. Give blowout preventer program, if any.

## 24.

SIGNED

Area Manager  
TITLE Minerals Management, Inc. July 6, 1976

(This space for Federal or State office use)

PERMIT NO. \_\_\_\_\_

APPROVAL DATE \_\_\_\_\_

APPROVED BY \_\_\_\_\_

TITLE \_\_\_\_\_

DATE \_\_\_\_\_

CONDITIONS OF APPROVAL, IF ANY:

\*See Instructions On Reverse Side

NEW MEXICO OIL CONSERVATION COMMISSION  
WELL LOCATION AND ACREAGE DEDICATION PLAT

Form C-102  
Supersedes C-128  
Effective 1-1-65

All distances must be from the outer boundaries of the Section.

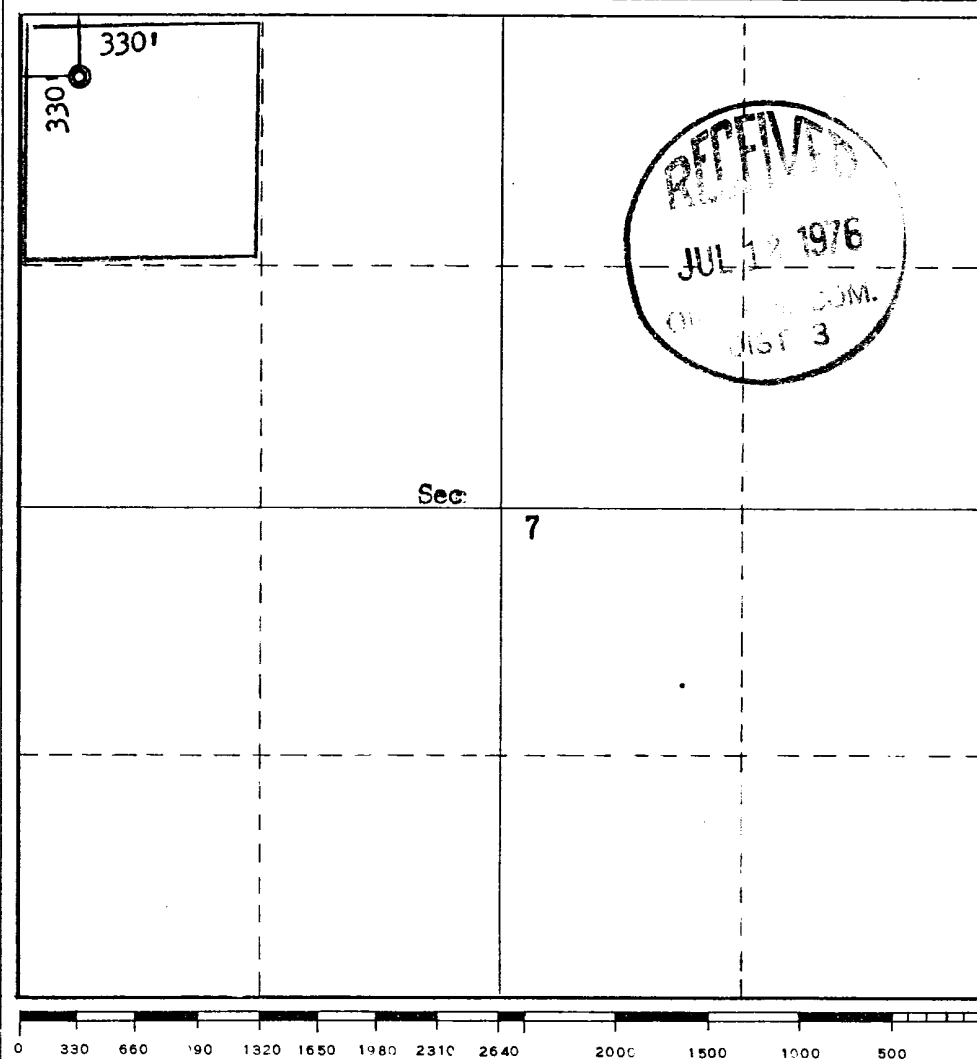
Operator <b>Filon Exploration Company</b>			Lease <b>Federal 7-A</b>		Well No. <b>1</b>
Unit Letter <b>D</b>	Section <b>7</b>	Township <b>21N</b>	Range <b>6W</b>	County <b>Sandoval</b>	
Actual Footage Location of Well:					
<b>330</b> feet from the <b>North</b> line and <b>330</b> feet from the <b>West</b> line					
Ground Level Elev. <b>6762</b>	Producing Formation <b>Entrada</b>	Pool <b>Wildcat</b>	Dedicated Acreage: <b>40</b> Acres		

1. Outline the acreage dedicated to the subject well by colored pencil or hatchure marks on the plat below.
2. If more than one lease is dedicated to the well, outline each and identify the ownership thereof (both as to working interest and royalty).
3. If more than one lease of different ownership is dedicated to the well, have the interests of all owners been consolidated by communitization, unitization, force-pooling, etc?

☐ Yes ☐ No If answer is "yes," type of consolidation \_\_\_\_\_

If answer is "no," list the owners and tract descriptions which have actually been consolidated. (Use reverse side of this form if necessary.) \_\_\_\_\_

No allowable will be assigned to the well until all interests have been consolidated (by communitization, unitization, forced-pooling, or otherwise) or until a non-standard unit, eliminating such interests, has been approved by the Commission.



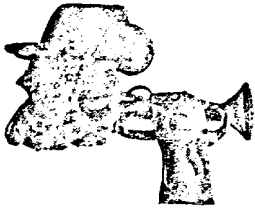
CERTIFICATION

I hereby certify that the information contained herein is true and complete to the best of my knowledge and belief.

Name  
*J. Arnold Jell*  
Position  
**Area Manager**  
Company  
**Minerals Management Inc.**  
Date  
**July 6, 1976**

I hereby certify that the well location shown on this plat was plotted from field notes of actual surveys made by me or under my supervision, and that the same is true and correct to the best of my knowledge and belief.

Date Surveyed  
**June 30, 1976**  
Registered Professional Engineer and/or Land Surveyor  
*Fred B. Kerr Jr.*  
**Fred B. Kerr Jr.**  
Certificate No.  
**3950**



MINERALS MANAGEMENT INCORPORATED  
A Division of SCIENTIFIC SOFTWARE CORPORATION

July 6, 1976

DEVELOPMENT PLAN FOR SURFACE USE

FILON EXPLORATION CORPORATION

FEDERAL 7A WELL NO. 1

330' FNL, 330' FWL, SEC. 7, T21N, R6W

SANDOVAL COUNTY, NEW MEXICO

1. Existing Roads

The main road is from Counselors Trading Post to Star Lake Compressor Station, as shown on topographic map.

2. Planned Access Road

As shown on topographic map. Road to be 20' wide and ditched as required.

3. Location of Existing Wells

None

4. Location of Tank Batteries & Flowlines

Will be initially on location pad.

5. Location & Type of Water Supply

To be hauled from BLM Encino Water Supply Well. Alternate source to be investigated.

6. Source of Construction Materials

Not applicable.

7. Method of Handling Waste Material

Waste material will be buried in the reserve pit on completion of well. Toilet facilities will be provided. Reserve pit will be backfilled.

8. Ancillary Facilities

No camps or airstrips will be used.

9. Wellsite Layout

See attached diagram. Locations on flat terrain.

10. Plans for Restoration of Surface

Will be restored in accordance with current Bureau of Land Management specifications.

11. Other Information

The topography of the area in the vicinity of the well and roads is a flat sandy soil covered with sagebrush and sparse vegetation.

12. Operator's Representative

Minerals Management, Inc., 501 Airport Dr., Suite 105,  
Farmington, New Mexico 87401.

13. Certification

I hereby certify that I, or persons under my direct supervision, have inspected the proposed drillsite and access route; that I am familiar with the conditions which presently exist; that the statements made in this plan are, to the best of my knowledge, true and correct; and, that the work associated with the operations proposed herein will be performed by Filon Exploration Corporation and its contractors and subcontractors in conformity with this plan and the terms and conditions under which it is approved.

July 6, 1976  
Date

J. Arnold Snell  
J. Arnold Snell

Minerals Management, Inc.  
Company

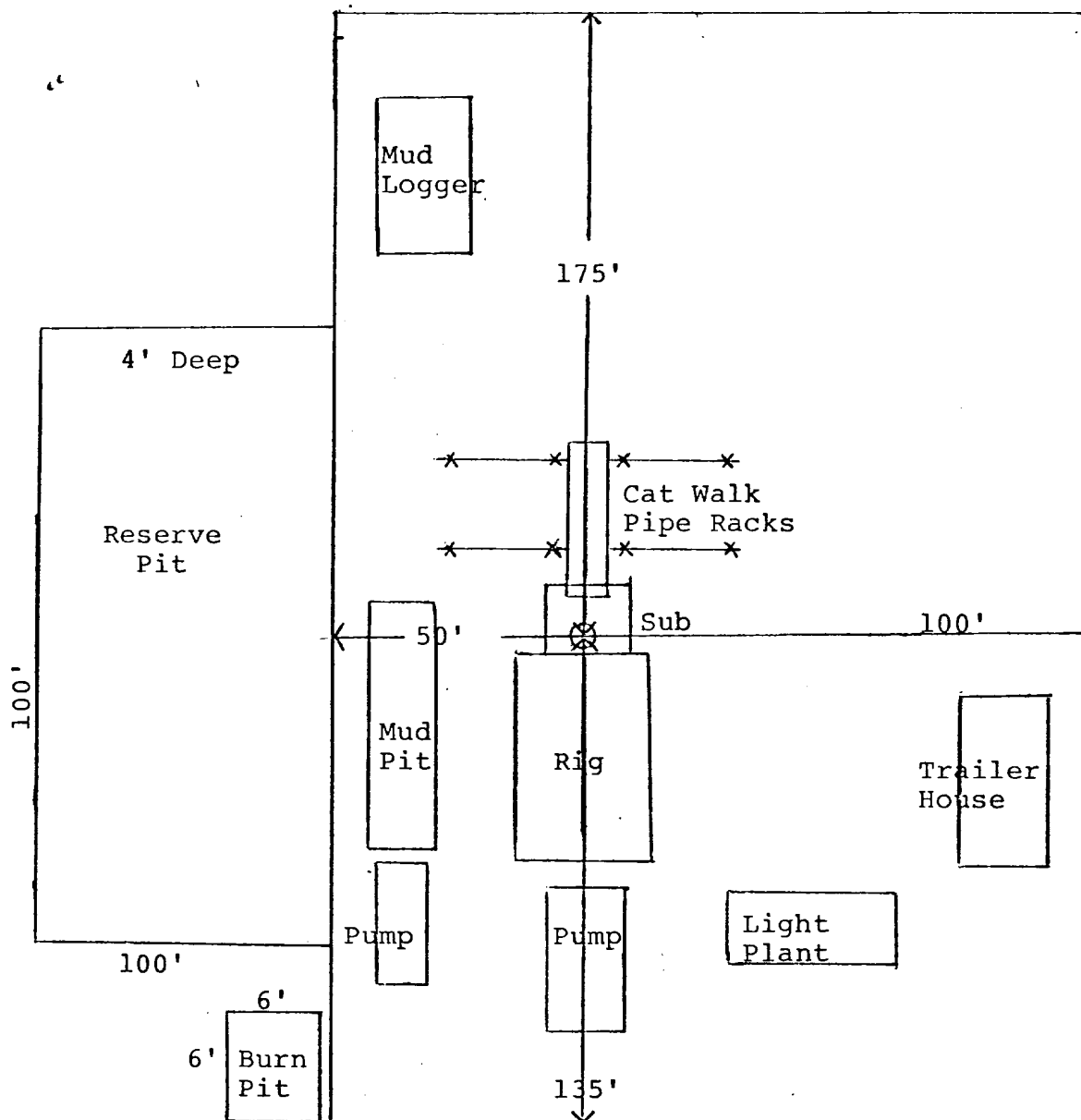
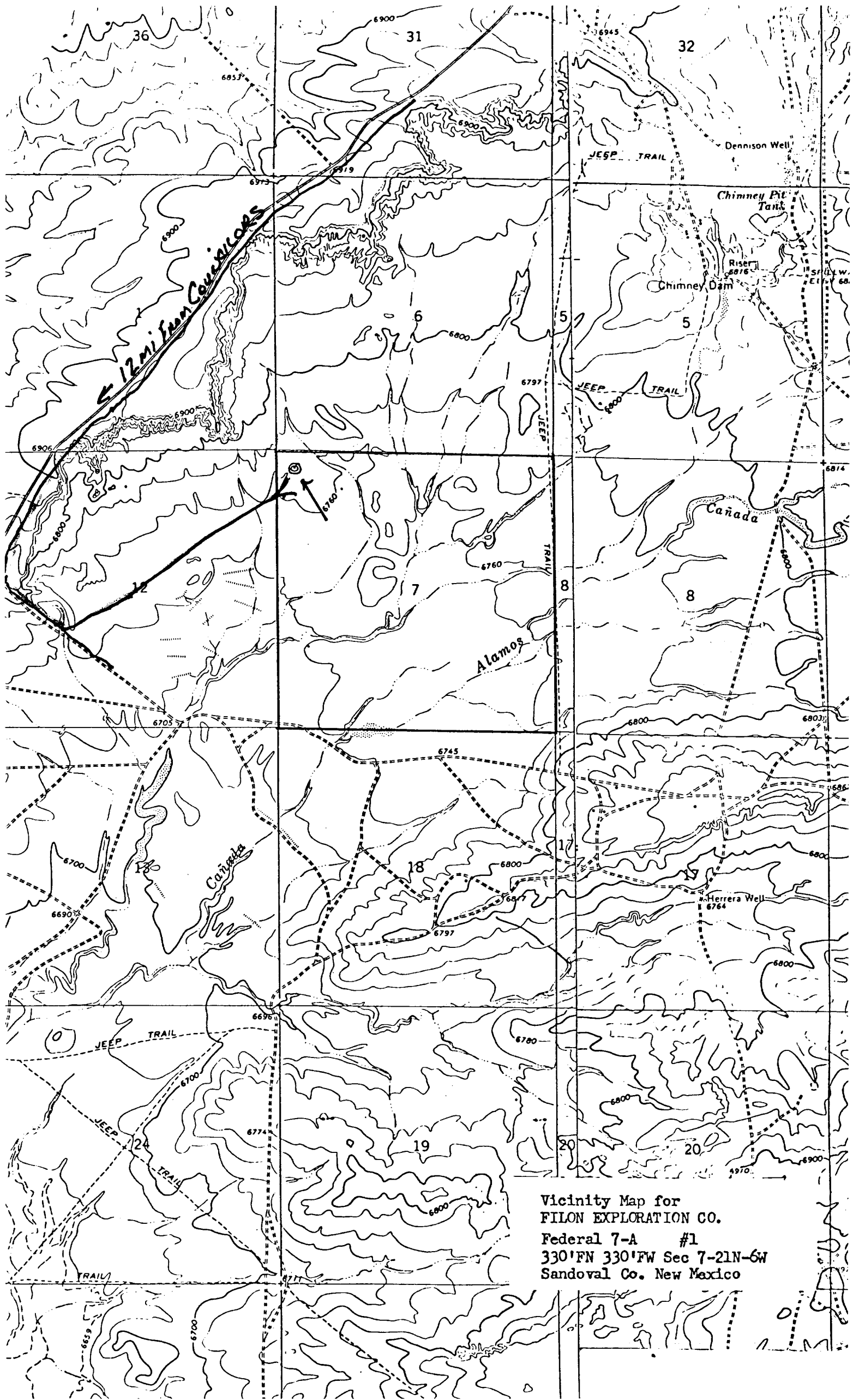


DIAGRAM OF WELL LOCATION  
AND DRILLING RIG LAYOUT



Vicinity Map for  
FILON EXPLORATION CO.  
Federal 7-A #1  
330'FN 330'FW Sec 7-21N-6W  
Sandoval Co. New Mexico