

UNITED STATES  
DEPARTMENT OF THE INTERIOR  
GEOLOGICAL SURVEY

30-043-20243

5. LEASE DESIGNATION AND SERIAL NO.

391

6. IF INDIAN, ALLOTTEE OR TRIBE NAME

Jicarilla Apache

7. UNIT AGREEMENT NAME

8. FARM OR LEASE NAME

Apache Flats

9. WELL NO.

12

10. FIELD AND POOL, OR WILDCAT

Wildcat - PC

11. SEC., T., R., M., OR BLK.  
AND SURVEY OR AREA

Sec. 35-T23N-R4W

12. COUNTY OR PARISH 13. STATE

Sandoval

N. M.

## APPLICATION FOR PERMIT TO DRILL, DEEPEN, OR PLUG BACK

1a. TYPE OF WORK

DRILL ☒DEEPEN ☐PLUG BACK ☐

b. TYPE OF WELL

OIL  
WELL ☐GAS  
WELL ☒

OTHER

SINGLE  
ZONE ☒MULTIPLE  
ZONE ☐

2. NAME OF OPERATOR

Jack A. Cole

3. ADDRESS OF OPERATOR

P. O. Box 191, Farmington, New Mexico 87401

4. LOCATION OF WELL (Report location clearly and in accordance with any State requirements.)\*

At surface

790/N and 990/W Sec. 35-T23N-R4W

At proposed prod. zone

Same

14. DISTANCE IN MILES AND DIRECTION FROM NEAREST TOWN OR POST OFFICE\*

70 Miles Southeast of Bloomfield, New Mexico

15. DISTANCE FROM PROPOSED\*

LOCATION TO NEAREST  
PROPERTY OR LEASE LINE, FT.  
(Also to nearest drlg. unit line, if any)

16. NO. OF ACRES IN LEASE

1920

17. NO. OF ACRES ASSIGNED  
TO THIS WELL

160

18. DISTANCE FROM PROPOSED LOCATION\*  
TO NEAREST WELL, DRILLING, COMPLETED,  
OR APPLIED FOR, ON THIS LEASE, FT.

2600'

19. PROPOSED DEPTH

2800

20. ROTARY OR CABLE TOOLS

Rotary

21. ELEVATIONS (Show whether DF, RT, GR, etc.)

7142 GR

22. APPROX. DATE WORK WILL START\*

August 15, 1976

23.

## PROPOSED CASING AND CEMENTING PROGRAM

SIZE OF HOLE	SIZE OF CASING	WEIGHT PER FOOT	SETTING DEPTH	QUANTITY OF CEMENT
12 1/4	8 5/8	24.0	120'	Circulate
7 7/8	4 1/2	10.5	2800	150 Sacks

Well will be mud drilled with rotary tools after setting and cementing 8 5/8" surface casing. Run electric logs at total depth and set 4 1/2" casing if warranted, cementing same with 150 sacks. Sand-water frac. Treat down casing through perforations opposite Pictured Cliffs sand. Run 1" tubing for production string to produce as a Pictured Cliffs natural gas well.

*Gas not dedicated*

IN ABOVE SPACE DESCRIBE PROPOSED PROGRAM: If proposal is to deepen or plug back, give data on present productive zone and proposed new productive zone. If proposal is to drill or deepen directionally, give pertinent data on subsurface locations and measured and true vertical depths. Give blowout preventer program, if any.

24.

SIGNED

TITLE

Operator

DATE

July 26, 1976

(This space for Federal or State office use)

PERMIT NO.

APPROVAL DATE

APPROVED BY

TITLE

DATE

CONDITIONS OF APPROVAL, IF ANY:

\*See Instructions On Reverse Side

U.S. GEOLOGICAL SURVEY  
FARMINGTON, N.M.

JUL 29 1976

## WELL LOCATION AND ACREAGE DEDICATION PLAT

1-65

All distances must be from the outer boundaries of the Section.

Operator <b>Jack A. Cole</b>			Lease <b>Apache Flats</b>		Well No. <b>12</b>
Unit Letter <b>D</b>	Section <b>35</b>	Township <b>23N</b>	Range <b>4W</b>	County <b>Sandoval</b>	
Actual Footage Location of Well: <b>790</b> feet from the <b>North</b> line and <b>990</b> feet from the <b>West</b> line					
Ground Level Elev. <b>7142</b>	Producing Formation <b>Pictured Cliffs</b>		Pool <b>Wildcat</b>	Dedicated Acreage: <b>160</b> Acres	

1. Outline the acreage dedicated to the subject well by colored pencil or hachure marks on the plat below.
2. If more than one lease is dedicated to the well, outline each and identify the ownership thereof (both as to working interest and royalty).
3. If more than one lease of different ownership is dedicated to the well, have the interests of all owners been consolidated by communitization, unitization, force-pooling, etc?

☐ Yes ☐ No If answer is "yes," type of consolidation \_\_\_\_\_

If answer is "no," list the owners and tract descriptions which have actually been consolidated. (Use reverse side of this form if necessary.) \_\_\_\_\_

No allowable will be assigned to the well until all interests have been consolidated (by communitization, unitization, forced-pooling, or otherwise) or until a non-standard unit, eliminating such interests, has been approved by the Commission.

## CERTIFICATION

I hereby certify that the information contained herein is true and complete to the best of my knowledge and belief.

Name

Position

Operator

Company

Date

July 22, 1976

I hereby certify that the well location shown on this plat was plotted from field notes of actual surveys made by me or under my supervision, and that the same is true and correct to the best of my knowledge and belief.

Date Surveyed

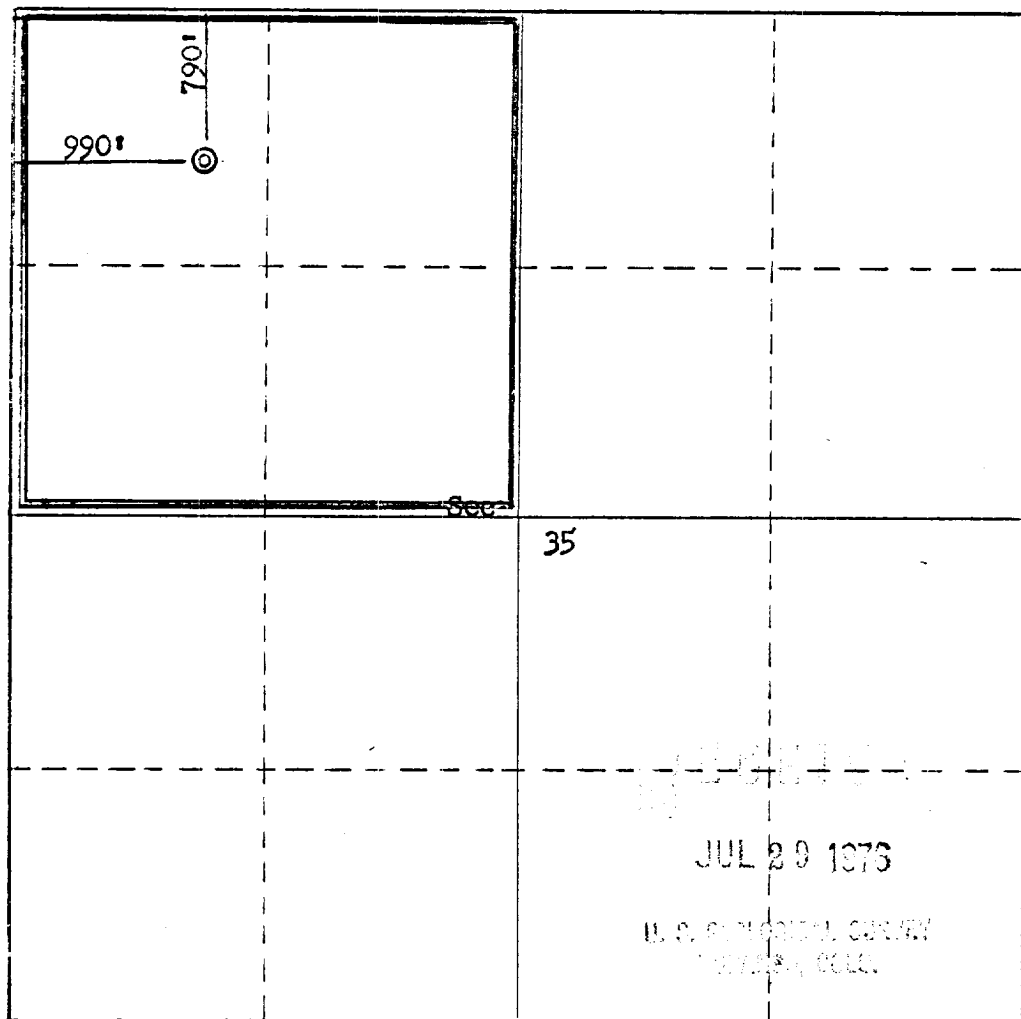
May 14, 1976

Registered Professional Engineer  
and/or Land Surveyor

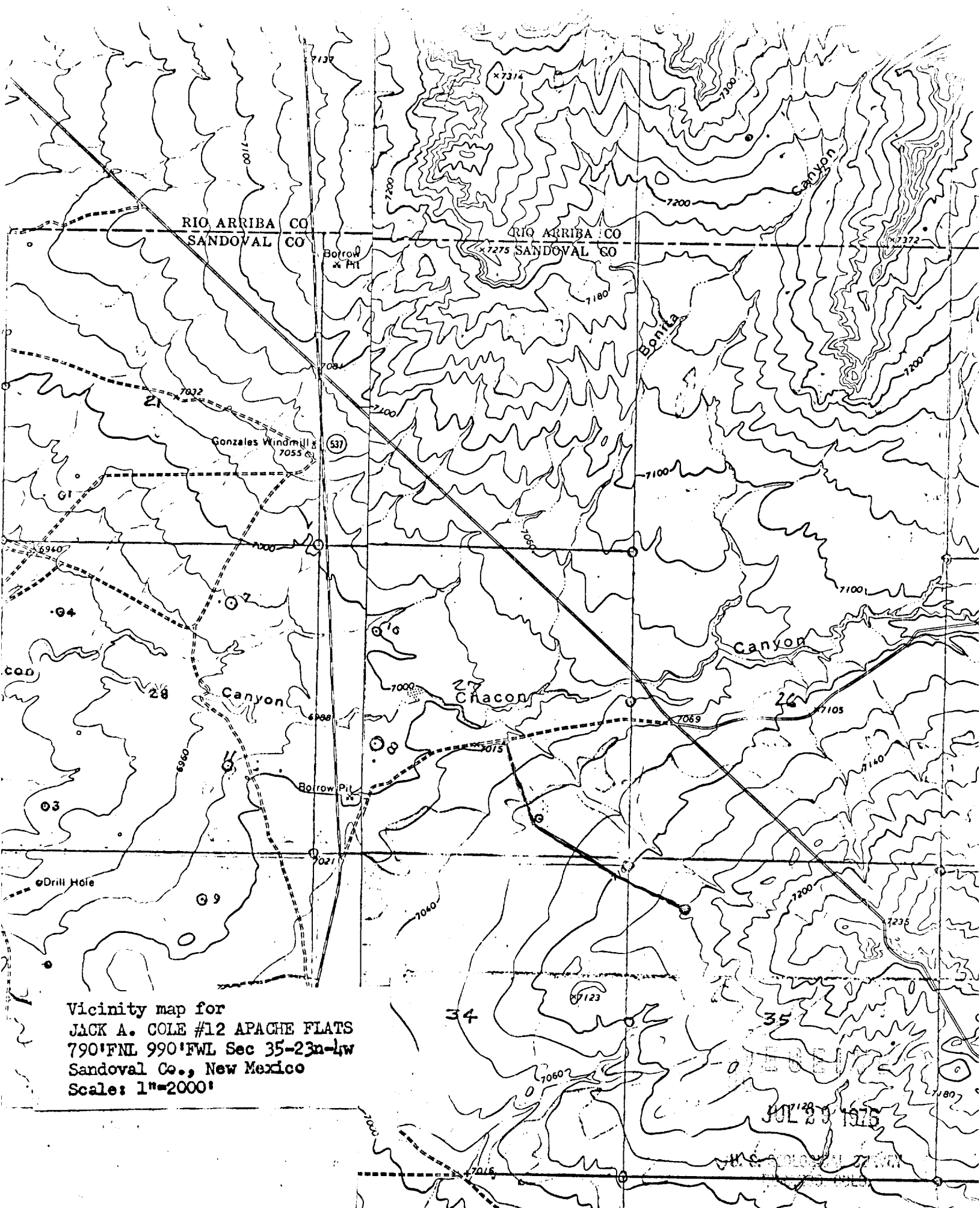
Fred B. Kerr Jr.

Certificate No.

3950



0 330 660 990 1320 1650 1980 2310 2640 2000 1500 1000 500 0



Vicinity map for  
JACK A. COLE #12 APACHE FLATS  
790' FNL 990' FWL Sec 35-23n-4w  
Sandoval Co., New Mexico  
Scale: 1"=2000'

JUL 29 1975