

UNITED STATES  
DEPARTMENT OF THE INTERIOR  
GEOLOGICAL SURVEY

## APPLICATION FOR PERMIT TO DRILL, DEEPEN, OR PLUG BACK

## 1a. TYPE OF WORK

DRILL ☒DEEPEN ☐PLUG BACK ☐

## b. TYPE OF WELL

OIL  
WELL ☒GAS  
WELL ☐

OTHER

SINGLE  
ZONE ☐MULTIPLE  
ZONE ☐

## 2. NAME OF OPERATOR

CHACE OIL COMPANY, INC.

## 3. ADDRESS OF OPERATOR

313 WASHINGTON S.E. ALBUQUERQUE, NM 87108

## 4. LOCATION OF WELL (Report location clearly and in accordance with any State requirements.)\*

At surface

UNIT "O" 1000' SL &amp; 1850' EL

At proposed prod. zone

## 14. DISTANCE IN MILES AND DIRECTION FROM NEAREST TOWN OR POST OFFICE\*

REGINA, N.M. 10½ Mi. N.W.

10. DISTANCE FROM PROPOSED\*  
LOCATION TO NEAREST  
PROPERTY OR LEASE LINE, FT.  
(Also to nearest drlg. unit line, if any)

1850'

18. DISTANCE FROM PROPOSED LOCATION\*  
TO NEAREST WELL, DRILLING, COMPLETED,  
OR APPLIED FOR, ON THIS LEASE, FT.

2000'

## 16. NO. OF ACRES IN LEASE

2560

## 19. PROPOSED DEPTH

7500

17. NO. OF ACRES ASSIGNED  
TO THIS WELL

160

## 20. ROTARY OR CABLE TOOLS

Rotary

## 21. ELEVATIONS (Show whether DF, RT, GR, etc.)

7193 GR

## 22. APPROX. DATE WORK WILL START\*

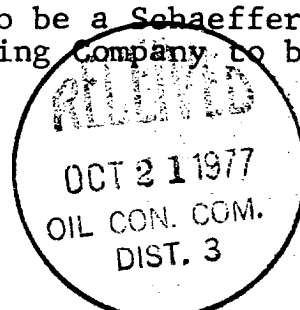
Nov. 25, 1977

## 23.

## PROPOSED CASING AND CEMENTING PROGRAM

SIZE OF HOLE	SIZE OF CASING	WEIGHT PER FOOT	SETTING DEPTH	QUANTITY OF CEMENT
13-1/2	8-5/8	26#	250'	225 sxs

Drill 265' 13½ surface hole, set 250' 8-5/8" csg. Cement to surface with 225 sxs. Using oil base mud (15%) oil and adequate BOP drill a 7-7/8" hole to 7600' to test the Dakota formation. If productive run 4½" 10.5# or heavier casing to total depth and cement in stages to cover the producing zones including the Pictured Cliffs formation. If non-productive plug and abandon. The BOP to be a Schaeffer double gate Hydraulic tested to 5000#. Coleman Drilling Company to be the contractor.



IN ABOVE SPACE DESCRIBE PROPOSED PROGRAM: If proposal is to deepen or plug back, give data on present productive zone and proposed new productive zone. If proposal is to drill or deepen directionally, give pertinent data on subsurface locations and measured and true vertical depths. Give blowout preventer program, if any.

## 24.

SIGNED

TITLE

President

DATE

10-18-77

(This space for Federal or State office use)

PERMIT NO.

APPROVAL DATE

APPROVED BY

TITLE

DATE

CONDITIONS OF APPROVAL, IF ANY:

\*See Instructions On Reverse Side

OCT 18 1977

OCT 18 1977

**NEW MEXICO OIL CONSERVATION COMMISSION  
WELL LOCATION AND ACERAGE DEDICATION PLAT**

All distances must be from the outer boundaries of the Section

Operator <b>CHACE OIL COMPANY</b>			Lease <b>CHACE APACHE 54</b>		Well No. <b>3</b>
Unit Letter <b>0</b>	Section <b>34</b>	Township <b>23 NORTH</b>	Range <b>3 WEST</b>	County <b>SANDOVAL</b>	
Actual Footage Location of Well: <div style="display: flex; justify-content: space-between;"> <span>1000 feet from the <b>SOUTH</b> line and</span> <span>1850 feet from the <b>EAST</b> line</span> </div>					
Ground Level Elev. <b>7193</b>	Producing Formation <b>Dakota</b>	Pool <b>Chacon ext</b>	Dedicated Acreage: <b>160</b> Acres		

1. Outline the acreage dedicated to the subject well by colored pencil or hatchure marks on the plat below.
2. If more than one lease is dedicated to the well, outline each and identify the ownership thereof (both as to working interest and royalty),
3. If more than one lease of different ownership is dedicated to the well, have the interests of all owners been consolidated by communitization, unitization, force-pooling, etc?

( ) Yes ( ) No If answer is "yes," type of consolidation .....

If answer is "no," list the owners and tract descriptions which have actually consolidated. (Use reverse side of this form if necessary.) .....

No allowable will be assigned to the well until all interests have been consolidated (by communitization, unitization, forced-pooling, or otherwise) or until a non standard unit, eliminating such interests, has been approved by the Commission.

**CERTIFICATION**

I hereby certify that the information contained herein is true and complete to the best of my knowledge and belief.

*Royce M. Cary*  
Name

**ROYCE MC CARY**

Position

**President**

Company

**CHACE OIL COMPANY, INC.**

Date

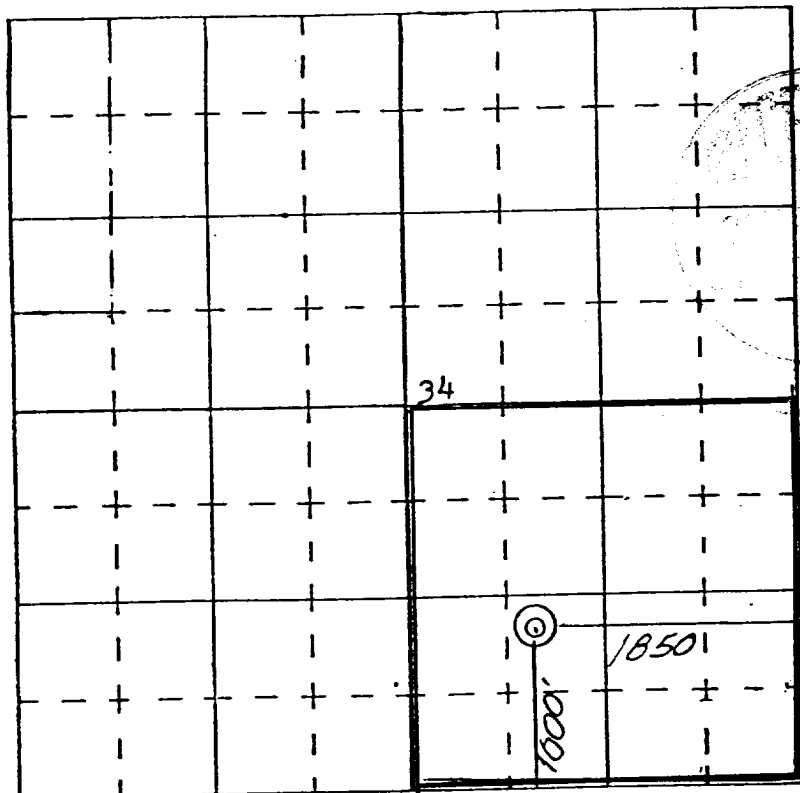
**10-18-77**

I hereby certify that the well location shown on this plat was plotted from field notes of actual surveys made by me or under my supervision, and that the same is true and correct to the best of my knowledge and belief.

**6 May 1977**

Date Surveyed

*James P. Leese*  
Registered Professional Engineer  
and/or Land Surveyor **James P. Leese**



SCALE—4 INCHES EQUALS 1 MILE

**SAN JUAN ENGINEERING COMPANY, FARMINGTON, N. M.**

**1463**

Certificate No.

