

UNITED STATES  
DEPARTMENT OF THE INTERIOR  
GEOLOGICAL SURVEY

## APPLICATION FOR PERMIT TO DRILL, DEEPEN, OR PLUG BACK

## 1a. TYPE OF WORK

DRILL ☒DEEPEN ☐PLUG BACK ☐

## b. TYPE OF WELL

OIL  
WELL ☒GAS  
WELL ☐

OTHER

SINGLE  
ZONE ☐MULTIPLE  
ZONE ☐

## 2. NAME OF OPERATOR

Worldwide Exploration Consultants Inc.

## 3. ADDRESS OF OPERATOR

501 Airport Drive,

% K &amp; A Minerals Management Inc. Farmington, New Mexico

## 4. LOCATION OF WELL (Report location clearly and in accordance with any State requirements.)\*

At surface

660' FSL, 1650' FEL Sec 33, T20N, R4W ✓

At proposed prod. zone

## 14. DISTANCE IN MILES AND DIRECTION FROM NEAREST TOWN OR POST OFFICE\*

19 miles north of Torreon Trading Post.

## 15. DISTANCE FROM PROPOSED\*

LOCATION TO NEAREST  
PROPERTY OR LEASE LINE, FT.  
(Also to nearest drlg. unit line, if any)

660'

## 16. NO. OF ACRES IN LEASE

280

17. NO. OF ACRES ASSIGNED  
TO THIS WELL

40 ✓

## 18. DISTANCE FROM PROPOSED LOCATION\*

TO NEAREST WELL, DRILLING, COMPLETED,  
OR APPLIED FOR, ON THIS LEASE, FT.

None

## 19. PROPOSED DEPTH

5900

## 20. ROTARY OR CABLE TOOLS

Rotary

## 21. ELEVATIONS (Show whether DF, RT, GR, etc.)

6770' GR

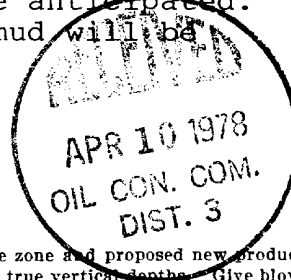
## 22. APPROX. DATE WORK WILL START\*

May 1, 1978

## 23. PROPOSED CASING AND CEMENTING PROGRAM

SIZE OF HOLE	SIZE OF CASING	WEIGHT PER FOOT	SETTING DEPTH	QUANTITY OF CEMENT
12 1/4	9 5/8 (new)	36	200	To surface
8 3/4	7 (new)	20 & 23	5900	To surface by Caliber Log

Operator proposes to drill a Jurassic test to 5900'. Completion will be determined from logs. A series 900 (3000 psi W.P.) blowout preventer will be installed on the surface pipe and will be tested to 500 psi before drilling the surface plug. The geologic name of the surface formation is the Lewis shale. Pertinent formation tops are estimated as Point Lookout 2400, Mancos 2500, Gallup 3300, Dakota 4550 and Entrada 5580. No abnormal formation pressures or temperatures are anticipated. Drilling should require approximately 15 days. Drilling mud will be approximately 9 lb., 36 vis.



IN ABOVE SPACE DESCRIBE PROPOSED PROGRAM: If proposal is to deepen or plug back, give data on present productive zone and proposed new productive zone. If proposal is to drill or deepen directionally, give pertinent data on subsurface locations and measured and true vertical depths. Give blowout preventer program, if any.

24.

SIGNED

Area Manager

TITLE K&amp;A Minerals Management DATE April 4, 1978

(This space for Federal or State office use)

PERMIT NO.

APPROVAL DATE

APPROVED BY

TITLE

DATE

CONDITIONS OF APPROVAL, IF ANY:

APR 5 1978

U. S. GEOLOGICAL SURVEY  
DENVER, COLO.

**NEW MEXICO OIL CONSERVATION COMMISSION  
WELL LOCATION AND ACREAGE DEDICATION PLAT**

Form C-102  
Supersedes C-128  
Effective 1-1-65

All distances must be from the outer boundaries of the Section.

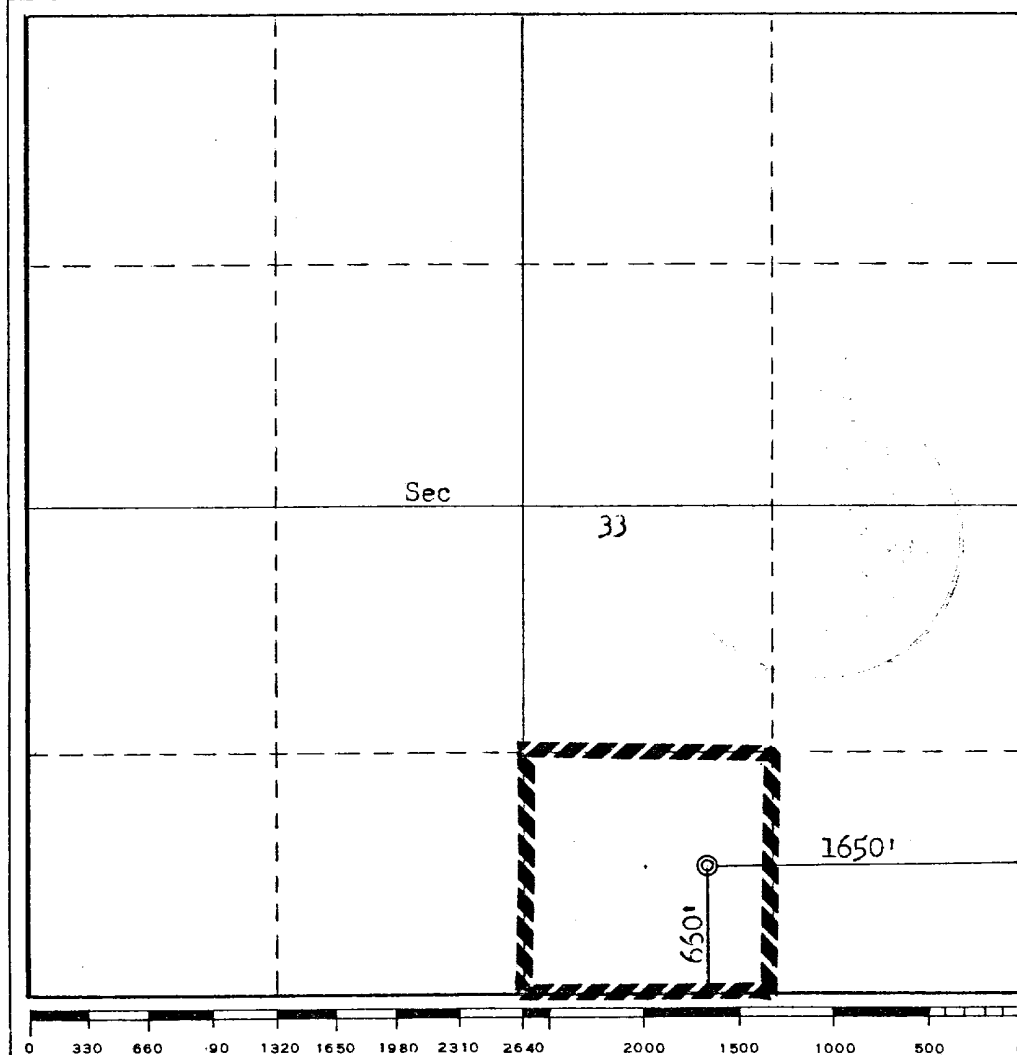
Operator <b>World Wide Exploration Consultants Inc.</b>			Lease <b>Federal 33</b>		Well No. <b>1</b>
Unit Letter <b>G</b>	Section <b>33</b>	Township <b>20N</b>	Range <b>4W</b>	County <b>Sandoval</b>	
Actual Footage Location of Well:					
<b>660</b> feet from the <b>South</b> line and		<b>1650</b> feet from the <b>East</b> line			
Ground Level Elev. <b>6770</b>	Producing Formation <b>Entrada</b>	Pool <b>Wildcat</b>	Dedicated Acreage: <b>40</b> Acres		

1. Outline the acreage dedicated to the subject well by colored pencil or hachure marks on the plat below.
2. If more than one lease is dedicated to the well, outline each and identify the ownership thereof (both as to working interest and royalty).
3. If more than one lease of different ownership is dedicated to the well, have the interests of all owners been consolidated by communitization, unitization, force-pooling, etc?

☐ Yes    ☐ No    If answer is "yes," type of consolidation \_\_\_\_\_

If answer is "no," list the owners and tract descriptions which have actually been consolidated. (Use reverse side of this form if necessary.) \_\_\_\_\_

No allowable will be assigned to the well until all interests have been consolidated (by communitization, unitization, forced-pooling, or otherwise) or until a non-standard unit, eliminating such interests, has been approved by the Commission.



**CERTIFICATION**

I hereby certify that the information contained herein is true and complete to the best of my knowledge and belief.

*W. E. Landry*  
Name *by cmx*

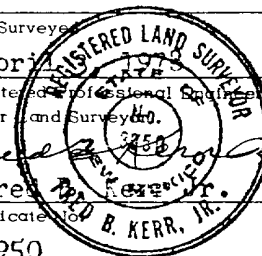
**W. E. Landry**  
Position **Area Manager**  
**Minerals Management**

Company  
**K&A, Inc. Minerals Mgmt.**

Date  
**April 4, 1978**

I hereby certify that the well location shown on this plat was plotted from field notes of actual surveys made by me or under my supervision, and that the same is true and correct to the best of my knowledge and belief.

Date Surveyed  
**April 4, 1978**  
Registered Professional Engineer and/or Land Surveyor  
*Frederick B. Kerr, Jr.*  
Certificate No. **3950**



DEVELOPMENT PLAN FOR SURFACE USE  
WORLDWIDE EXPLORATION CONSULTANTS INC.

FEDERAL 33-20-4 WELL NO. 1

SANDOVAL COUNTY, NEW MEXICO

1. Existing Roads

Roads to the location consist of state highway 197 southwest 15 miles from Cuba and county roads, 6 miles toward the Ojo Encino school, then one mile west and one mile north to the access road.

2. Planned Access Road

The access road will be 1000 feet long, 16' wide with negligible grade and adequately ditched for drainage.

3. Location of Existing Wells

Abandoned wells in the area are shown on the area map.

4. Location of Proposed Facilities

Flow lines and tank battery will be on the location pad. Equipment and pits will be fenced as required for protection of livestock and wildlife.

5. Location and Type of Water Supply

Water will be hauled by truck from the Media Dome Field water well.

6. Source of Construction Materials

Not applicable.

7. Methods of Handling Waste Disposal

Cuttings, drilling fluids and produced fluids will be retained in the reserve pit which will be fenced until sufficiently dry to permit closure with 4 ft. of cover. There will be no sewage. Garbage and other waste material will be placed in the burn pit for disposal and the non burnable portion will be covered with 4 ft. of cover at the termination of drilling operations. A portable toilet will be used. Wellsite cleanup will commence immediately upon completion of drilling operations and following the rig move.

8. Ancillary Facilities

No camps or airstrips are proposed for this location.

9. Well Site Layout

The well site is relatively flat with a maximum 3 ft. cut which will have a 3 : 1 slope to the pad. The rig orientation is conventional with steel mud pits and unlined reserve pit to the left, facing the pipe racks from the drawworks, exact placement is dependent upon the contractor available at the time of approval. Mud pumps and mud storage are to be located to the rear of the drawworks. Parking is to be on the side opposite the reserve pit.

10. Plans for Restoration of Surface

Upon completion of drilling operations, the location will be cleaned and pits fenced for the protection of livestock and wild life. When the pits are sufficiently dry, the spoil will be adequately covered and the area not required for operation will be restored and reseeded in accordance with B. L. M. stipulations.

11. Other Information

This well is to be located in an area of gently rolling sandy shale terrain with sagebrush and blue grama vegetation, generally over grazed by livestock. Inhabited dwellings and stock enclosures are shown on the vicinity map. An archeological study will be conducted and copy of the report will be furnished, as required.

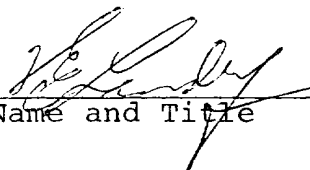
12. Lessee's or Operator's Representative

K & A Minerals Management Inc.  
501 Airport Drive  
Farmington, New Mexico 87401  
Telephone 505-327-4441

13. Certification

I hereby certify that I, or persons under my direct supervision, have inspected the proposed drillsite and access route; that I am familiar with the conditions which presently exist; that the statements made in this plan are, to the best of my knowledge, true and correct; and that the work associated with the operations proposed herein will be performed by Worldwide Exploration Consultants Inc. and its contractors and sub-contractors in conformity with this plan and the terms and conditions under which it is approved.

April 4, 1978  
Date

  
Area Manager  
Name and Title

K & A Minerals Management, Inc.

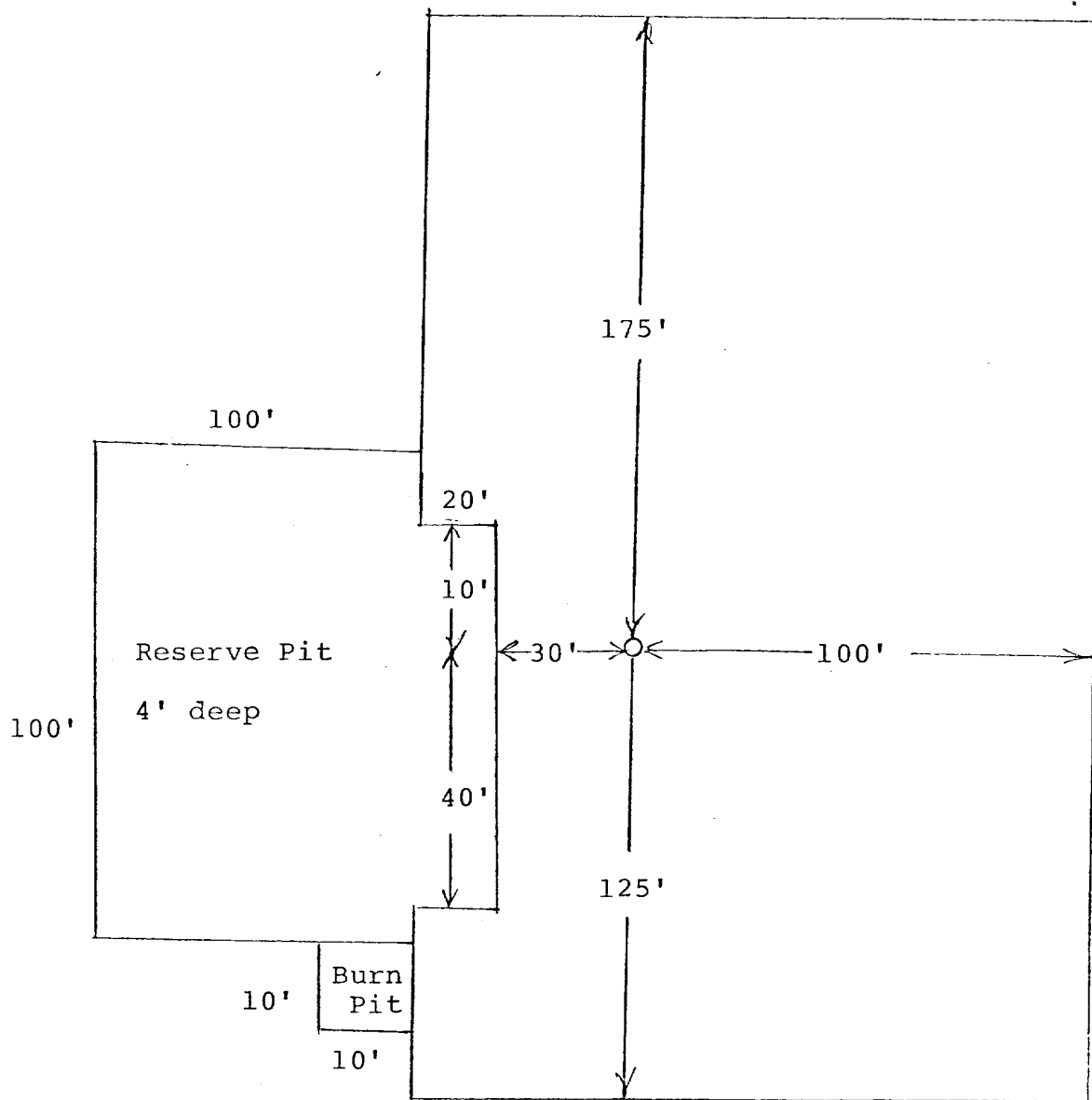
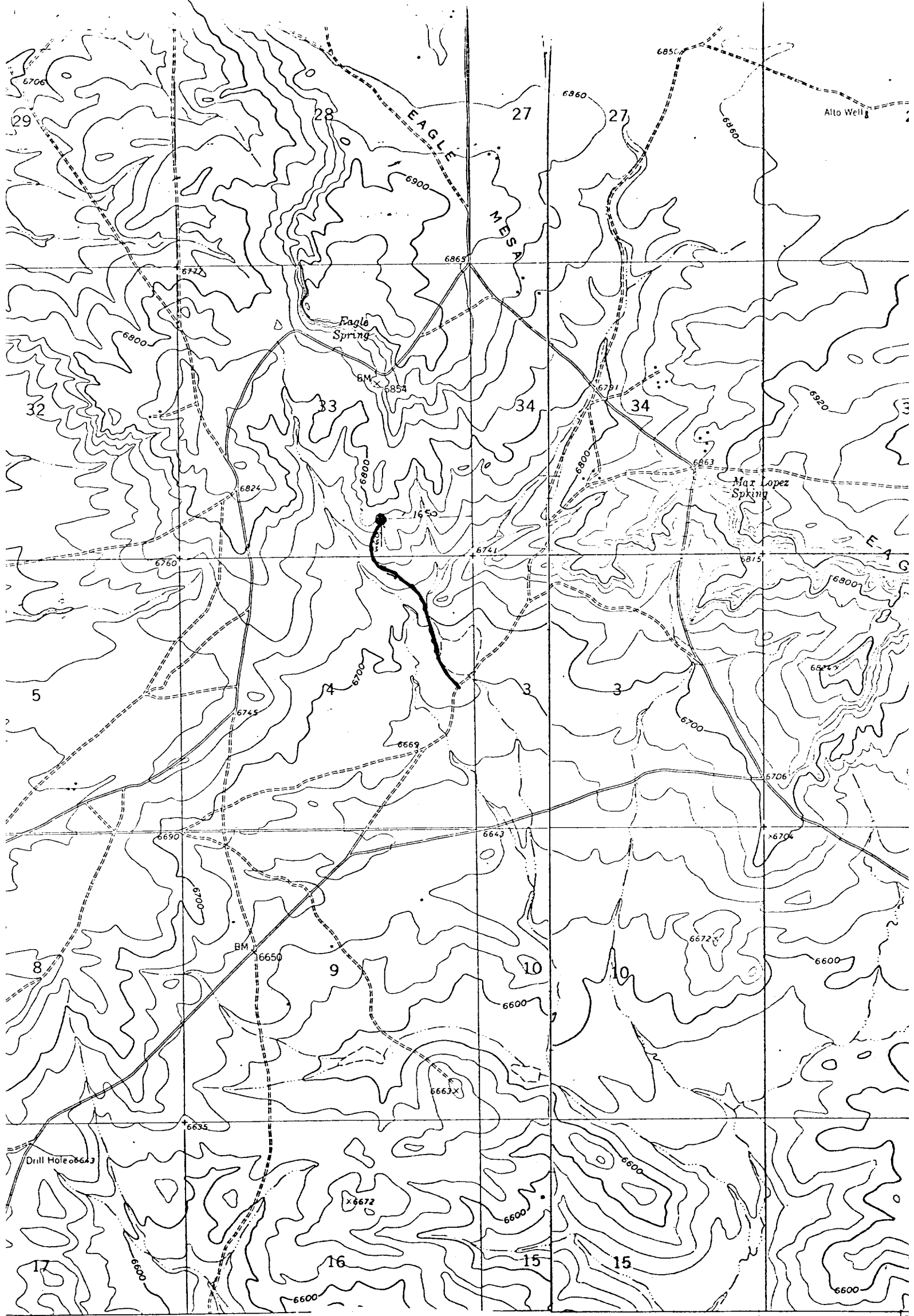


DIAGRAM OF WELL LOCATION

*[Signature]*



Vicinity Map for  
WORLD WIDE EXPL. CONSULTANTS INC. #1 Federal 33 the Geological Su  
660'FSL 1650'FEL Sec 33-T20N-R4W  
Sandoval County, New Mexico

Light-duty ————— Unimproved dirt - - - - -  
m aerial  
1

Polynomic projection 1927 North American datum  
10,000 foot grid based on New Mexico coordinate system.