

UNITED STATES
DEPARTMENT OF THE INTERIOR
GEOLOGICAL SURVEY

APPLICATION FOR PERMIT TO DRILL, DEEPEN, OR PLUG BACK

1a. TYPE OF WORK

DRILL ☒DEEPEN ☐PLUG BACK ☐

b. TYPE OF WELL

OIL
WELL ☐GAS
WELL ☒

OTHER

SINGLE
ZONE ☒MULTIPLE
ZONE ☐

2. NAME OF OPERATOR

DOME PETROLEUM CORP.

3. ADDRESS OF OPERATOR

501 Airport Dr., Suite 107, Farmington, New Mexico 87401

4. LOCATION OF WELL (Report location clearly and in accordance with any State requirements.)

At surface

1560' FNL, 860' FEL

At proposed prod. zone

14. DISTANCE IN MILES AND DIRECTION FROM NEAREST TOWN OR POST OFFICE*

9 miles West of Counselors Trading Post

15. DISTANCE FROM PROPOSED*

LOCATION TO NEAREST
PROPERTY OR LEASE LINE, FT.
(Also to nearest drlg. unit line, if any)18. DISTANCE FROM PROPOSED LOCATION*
TO NEAREST WELL, DRILLING, COMPLETED,
OR APPLIED FOR, ON THIS LEASE, FT.

21. ELEVATIONS (Show whether DF, RT, GR, etc.)

6983' GR

23.

PROPOSED CASING AND CEMENTING PROGRAM

SIZE OF HOLE	SIZE OF CASING	WEIGHT PER FOOT	SETTING DEPTH	QUANTITY OF CEMENT
12 1/4"	8 5/8"	23#	100'	75 sacks (circulated)
6 1/2"	4 1/2"	10.5#	2320'	375 sacks (circulated)

Move in rotary tools. Drill 12 1/4" hole to 100'. Set 100' of new 8 5/8", 23#, K55 casing. Cement with 75 sacks class "B" cement with 2% CaCl. Wait on cement 12 hours. Install 6" 900 Series blowout preventer. Test to 500 psi before drilling out from under surface pipe. Check pipe rams daily and blind rams on trips. Drill 6 1/2" hole to T.D. The geologic name of the surface formation is Tertiary Nacimiento. Gas is expected in the Chacra. All other formations are probably water bearing. Pertinent formation tops are estimated as Kirtland 640'; Fruitland 950'; Pictured Cliff 1510'; Chacra 1870'; and Cliffhouse 2290'. Mud system will be low solids nondispersed. Mud weight 8.8-9.2#/Gal., F.L. 8-10cc, viscosity 30-50 sec./quart. No abnormal temperatures or pressures are anticipated. Logging program will be DIL, FDC/CNL/GR with Caliper Log. Drill stem test will be taken where necessary for evaluation. If productive 4 1/2", 10.5#, K55 casing will be run and cemented w/275 sx. 65/35 Pozmix, 6% Gel, and 10# Gilsonite/sx., followed with 100 sx. class "B" cement w/10% salt. Drilling should require approximately 6 days.

IN ABOVE SPACE DESCRIBE PROPOSED PROGRAM: If proposal is to deepen or plug back, give data on present production and proposed new productive zone. If proposal is to drill or deepen directionally, give pertinent data on subsurface locations and measure and true vertical depths. Give blowout preventer program, if any.

24.

SIGNED

H. D. HOLLINGSWORTH

(This space for Federal or State office use)

TITLE

Drlg. & Prod. Foreman

DATE

5/02/80

PERMIT NO.

APPROVAL DATE

APPROVED BY

TITLE

DATE

CONDITIONS OF APPROVAL, IF ANY:

APPROVED

JUN 12 1980

JAMES F. SIMS

DISTRICT OIL & GAS SUPERVISOR

NMOC

OIL CONSERVATION DIVISION

STATE OF NEW MEXICO
ENERGY AND MINERALS DEPARTMENTP. O. BOX 2088
SANTA FE, NEW MEXICO 87501Form C-102
Revised 10-1-78

All distances must be from the outer boundaries of the Section.

Operator DOME PETROLEUM CORPORATION			Lease DOME-FEDERAL 10-22-7		Well No. 1
Unit Letter H	Section 10	Township 22N	Range 7W	County Sandoval	
Actual Footage Location of Well:					
1560		feet from the North		line and 860	
feet from the				feet from the East	
line				line	
Ground Level Elev. 6983	Producing Formation Chacra		Pool Rusty Chacra Extension		Dedicated Acreage: 160 Acres

1. Outline the acreage dedicated to the subject well by colored pencil or hachure marks on the plat below.

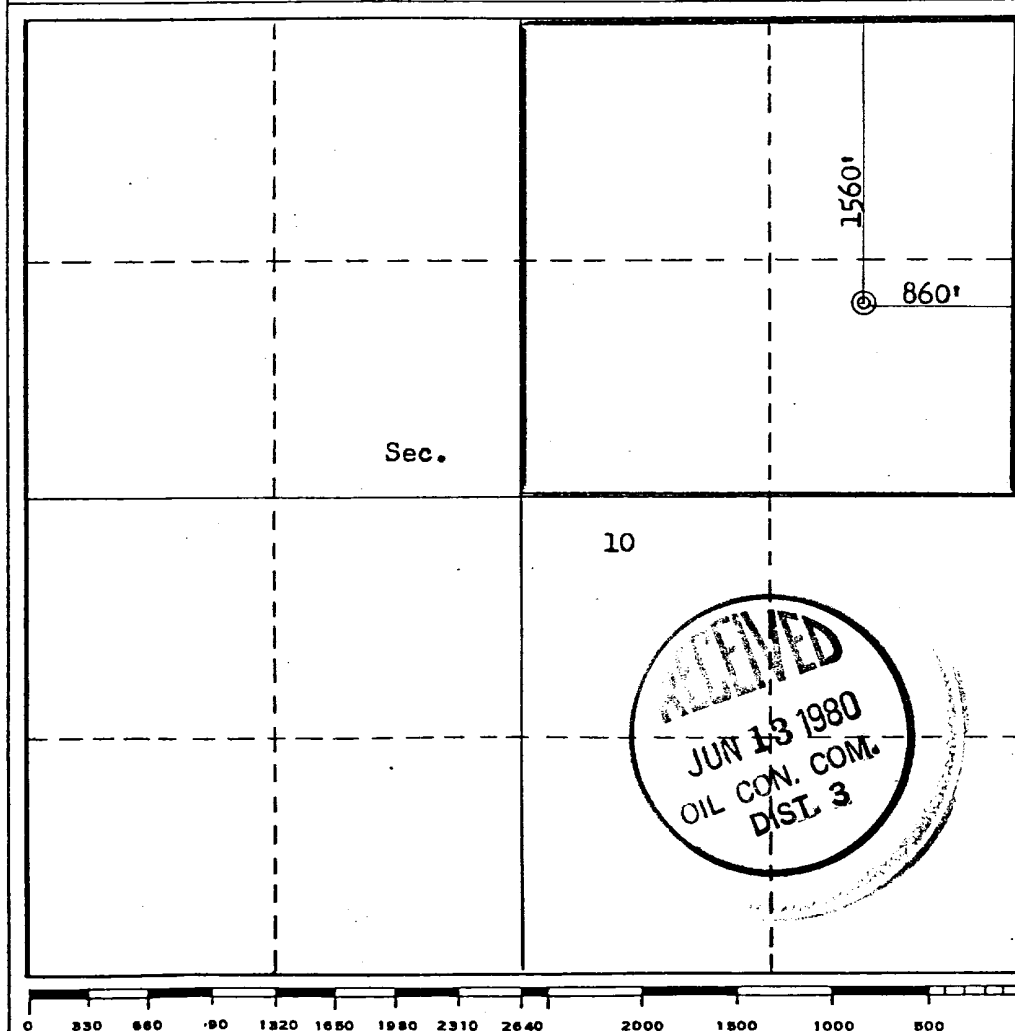
2. If more than one lease is dedicated to the well, outline each and identify the ownership thereof (both as to working interest and royalty).

3. If more than one lease of different ownership is dedicated to the well, have the interests of all owners been consolidated by communitization, unitization, force-pooling, etc?

☐ Yes ☐ No If answer is "yes," type of consolidation _____

If answer is "no," list the owners and tract descriptions which have actually been consolidated. (Use reverse side of this form if necessary.) _____

No allowable will be assigned to the well until all interests have been consolidated (by communitization, unitization, forced-pooling, or otherwise) or until a non-standard unit, eliminating such interests, has been approved by the Commission.



CERTIFICATION

I hereby certify that the information contained herein is true and complete to the best of my knowledge and belief.

H. D. Hollingsworth
Name
H. D. HOLLINGSWORTH
Position
Drilling & Production Foreman
Company
DOME PETROLEUM CORP.
Date
May 5, 1980

I hereby certify that the well location shown on this plat was plotted from field notes of actual surveys made by me or under my supervision, and that the same is true and correct to the best of my knowledge and belief.

Date Surveyed
May 5, 1980
Registered Professional Engineer and/or Land Surveyor
Fred B. Kern
Fred B. Kern
Certificate No. 3950



DOME PETROLEUM CORP.

SUITE 1400, COLORADO STATE BANK BLDG.

1600 BROADWAY

DENVER, COLORADO 80202

Development Plan For Surface Use

TELEPHONE
(303) 861-1230

DOMESTIC FEDERAL 10-22-7, WELL #1

1560' FNL, 860' FEL

Sec. 10, T22N, R7W

SANDOVAL COUNTY, NEW MEXICO

1. Existing Roads

The main road to location is that from Counselors Trading Post to Pueblo Pintado, leaving this road approximately 9 miles South of Counselors and using existing side road.

2. Planned Access Roads

The access road, to be routed as shown on the attached map, will be approximately 100' long and 18' wide with adequate ditch and water bars.

3. Location Of Existing Wells

Existing wells within one mile of location are shown on the attached topographic map.

4. Location Of Proposed Facilities

Development of commercial gas production will require separation facilities on the location pad. Equipment and pits will be fenced as required for protection of livestock and wildlife. Above ground facilities will be painted brown or grey to blend in with the surrounding area as specified by the BLM. The disturbed areas no longer needed for operations after well completion will be restored to natural contour and reseeded.

5. Location & Type Of Water Supply

To be hauled from Escrito, approximately 25 miles to the North.

6. Source Of Construction Materials

Not applicable.

7. Method Of Handling Waste Material

All garbage and trash that can be burned shall be burned. All trash that cannot be burned will be contained in a trash pit and covered with a minimum of 24 inches of dirt. All drilling waste such as cuttings, overflows of oil, water, and drilling fluids will be contained in the reserve pit and buried with adequate cover upon completion of operations. The reserve pit will be fenced until cleanup operations are commenced. Toilet facilities will be provided.

8. Ancillary Facilities

No camps or airstrips are proposed for this location.

9. Well Site Layout

See attached diagram.

10. Plans For Restoration Of Surface

Cleanup of the location will commence immediately following the removal of the drilling equipment. The reserve pit will be fenced until restoration operations are commenced. The location will be returned to original contour if the well is not productive. Both the road and location will be reseeded in accordance with BLM specifications.

11. Other Information


This location is on sparsely vegetated sandy land. Vegetation consists principally of sagebrush and native grasses. There is no water source in the immediate area.

12. Lessee's Or Operator's Representative

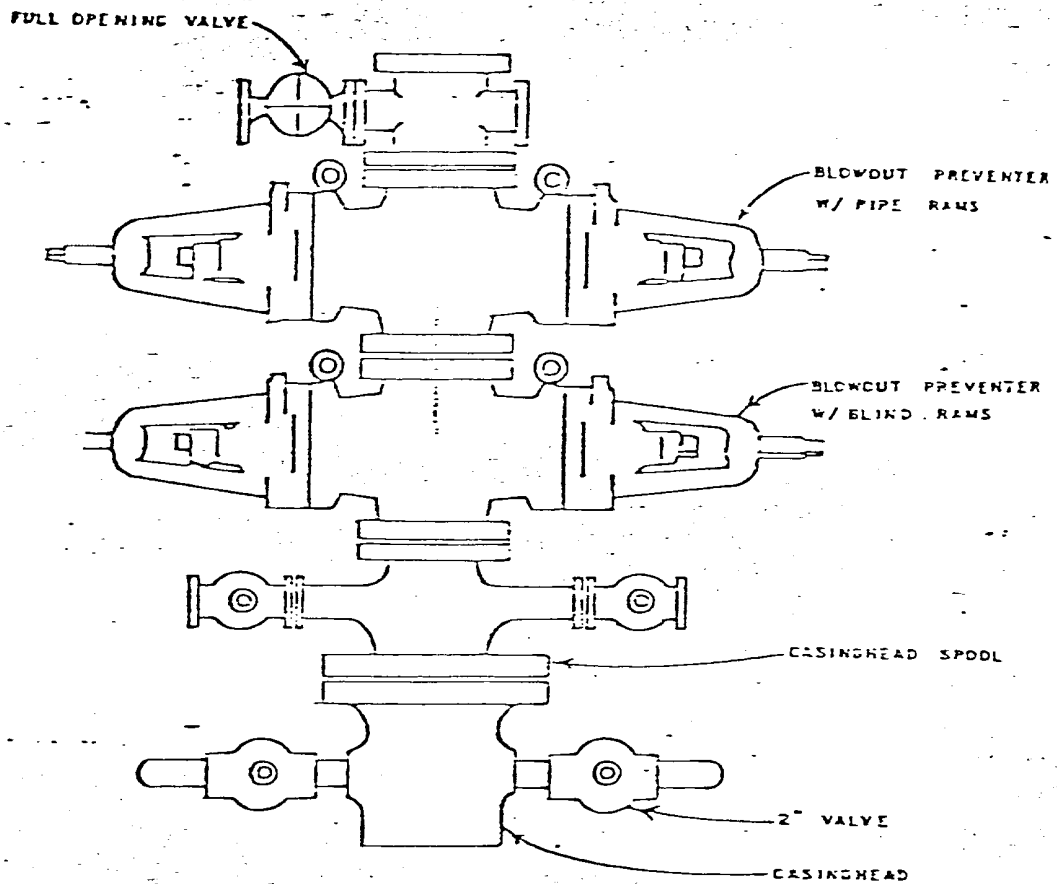
Dome Petroleum Corporation
H. D. Hollingsworth
501 Airport Drive, Suite 107
Farmington, New Mexico 87401
Phone: 505-325-2897 Office
505-327-1548 Home

13. Certification

I hereby certify that I, or persons under my direct supervision, have inspected the proposed drill site and access route; that I am familiar with the conditions which presently exist; that the statements made in this plan are, to the best of my knowledge, true and correct; and that the work associated with the operations proposed herein will be performed by Dome Petroleum Corp. and it's contractors and subcontractors in conformity with this plan and the terms and conditions under which it is approved.


H. D. HOLLINGSWORTH
Drilling & Production Foreman
Dome Petroleum Corporation

HDH:ig
May 2, 1980



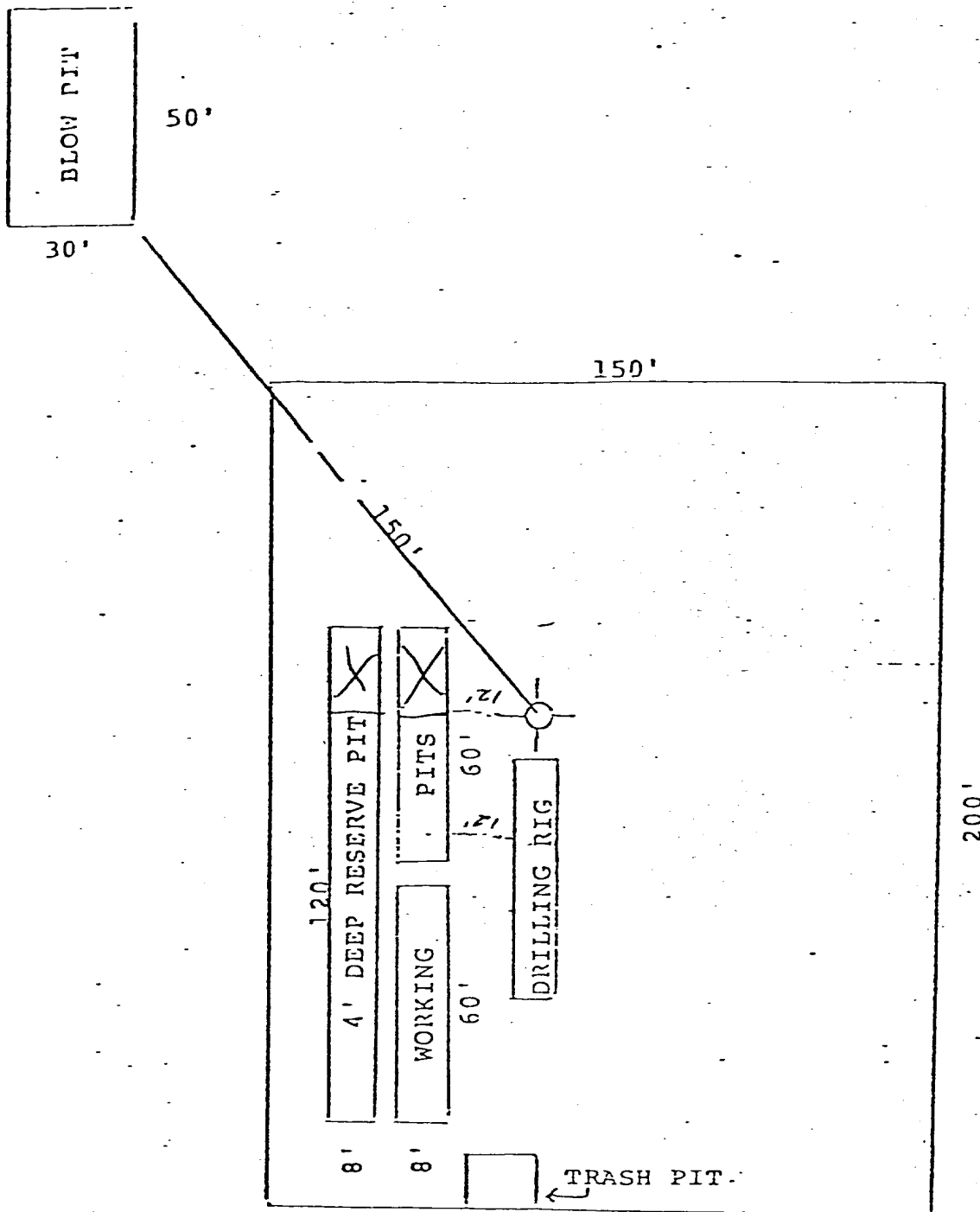
DOME PETROLEUM CORP.

SUITE 1500, COLORADO STATE BANK BLDG.

1600 BROADWAY

DENVER, COLORADO 80202

STANDARD BLOWOUT PREVENTER ASSEMBLY
6" 900 SERIES

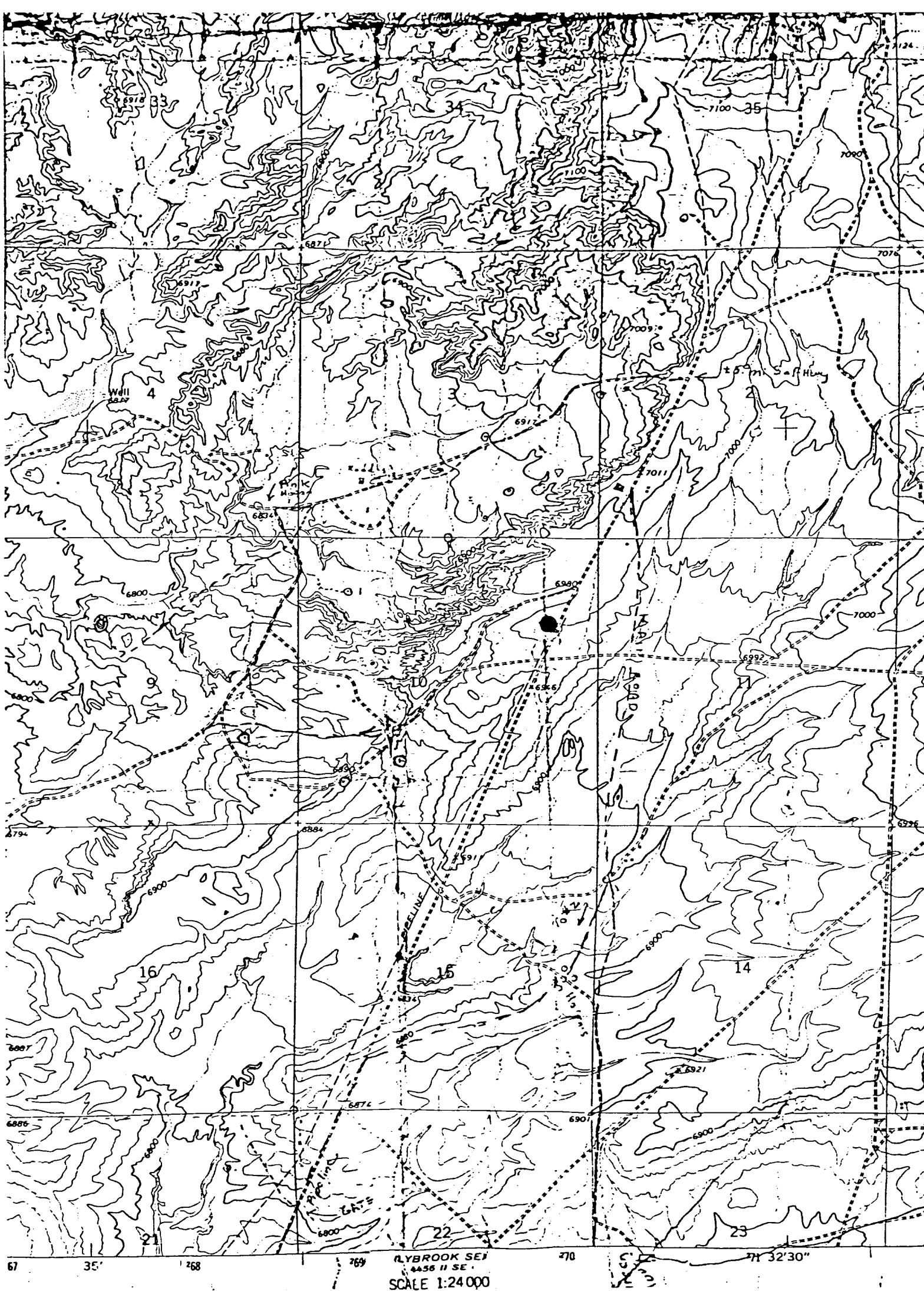


DOME PETROLEUM CORP.

SUITE 1500, COLORADO STATE BANK BLDG.

1600 BROADWAY

DENVER, COLORADO 80202



Vicinity Map for
 DOME PETROLEUM CORP. 1 DOME-FEDERAL 10-22-7
 1560°FNL 860°FEL Sec. 10-T22N-R7W
 SANDOVAL COUNTY, NEW MEXICO

NORTH

QUAD

THIS MAP COMPILED FROM NATIONAL MAP ACCURACY STANDARDS
FOR SALE BY U.S. GEOLOGICAL SURVEY, DENVER, COLORADO 80215, OR WASHINGTON, D.C. 20242