

New Location

DEPARTMENT OF THE INTERIOR
GEOLOGICAL SURVEY

30-043-20492

APPLICATION FOR PERMIT TO DRILL DEEPEN OR PLUG BACK

1. TYPE OF WELL DRILL ☒ DEEPEN ☐ PLUG BACK ☐

2. TYPE OF WELL OIL ☒ GAS ☐ OTHER ☐ SINGLE ZONE ☒ MULTIPLE ZONE ☐

3. NAME OF OPERATOR

4. ADDRESS OF OPERATOR

5. LOCATION OF WELL (Report location, depth and its occurrence with any State requirements.)

6. DEPTH OF WELL

7. DATE OF PERMIT

8. DISTANCE IN MILES AND DIRECTION FROM NEAREST TOWN OR POST OFFICE

9. DISTANCE FROM PROPOSED

10. NO. OF ACRES IN LEASE

11. NO. OF ACRES ASSIGNED TO THIS WELL

12. PROPOSED DEPTH

13. ROTARY OR CABLE TOOLS

14. APPROX. DATE WORK WILL START

15. PROPOSED CASING AND CEMENTING PROGRAM

16. QUANTITY OF CEMENT

17. QUANTITY OF CEMENT

18. QUANTITY OF CEMENT

19. QUANTITY OF CEMENT

20. QUANTITY OF CEMENT

21. QUANTITY OF CEMENT

22. QUANTITY OF CEMENT

23. QUANTITY OF CEMENT

24. QUANTITY OF CEMENT

25. QUANTITY OF CEMENT

26. QUANTITY OF CEMENT

27. QUANTITY OF CEMENT

28. QUANTITY OF CEMENT

29. QUANTITY OF CEMENT

30. QUANTITY OF CEMENT

31. QUANTITY OF CEMENT

32. QUANTITY OF CEMENT

33. QUANTITY OF CEMENT

34. QUANTITY OF CEMENT

35. QUANTITY OF CEMENT

36. QUANTITY OF CEMENT

37. QUANTITY OF CEMENT

38. QUANTITY OF CEMENT

39. QUANTITY OF CEMENT

40. QUANTITY OF CEMENT

41. QUANTITY OF CEMENT

42. QUANTITY OF CEMENT

43. QUANTITY OF CEMENT

44. QUANTITY OF CEMENT

45. QUANTITY OF CEMENT

46. QUANTITY OF CEMENT

47. QUANTITY OF CEMENT

48. QUANTITY OF CEMENT

49. QUANTITY OF CEMENT

50. QUANTITY OF CEMENT

Move in rotary tools. Drill 12 1/2" hole to 200'. Set 200' new 8 5/8" 23 3/4" K55 casing. Cement with 200 sacks Class "B" Cement with 2% CaCl. Wait on cement 12 hours. Install 20' 90° series blowout preventer. Test to 500 psi before drilling out from under surface pipe. Check pipe runs daily and blind rams on trips. Drill 7 7/8" hole to TD. The geological name of the surface formation is San Jose. Oil is expected in the Gallup. All other formations are probably water bearing. Pertinent formation tops are estimated as Fruitland 970'; Pictured Cliff 1150'; Chacra 1530'; Cliffhouse 1870'; Point Lookout 3450'; Mancos 3650'; and Gallup 4600'. Mud will be low solids nondispersed. Mud weight 8.8-9.2 #/Gal., F.L. 8-10 cc, and viscosity 30-50 sec./quart. No abnormal temperatures or pressures are anticipated. Logging program will be PDL, FDC/CNL/GR with Caliper Log. Drill stem test will be taken where necessary for evaluation. If productive 4", 10.5", K55 casing will be run and cemented with 500 sacks 65/35 Pozmix, with 6% Gel and 10% Gilsomite/sx. Followed with 100 sacks Class "B" cement with 10% salt. Drilling should require 15 days.

This action is subject to administrative appeal pursuant to 30 CFR 290.

IN ABOVE SPACE DESCRIBE PROPOSED PROGRAM: If proposal is to deepen or plug back, give data on present productive zone and proposed new productive zone. If proposal is to drill or deepen directionally, give pertinent data on subsurface locations and measured and true vertical depths. Give blowout preventer program, if any.

24

SIGNED: *[Signature]*

(This space for Federal or State office use)

PERMIT NO. *AB 717-1-80*

APPROVAL DATE

APPROVED BY: *[Signature]*

CONDITIONS

DATE

TITLE

DATE

TITLE

DATE

TITLE

DATE

TITLE

DATE

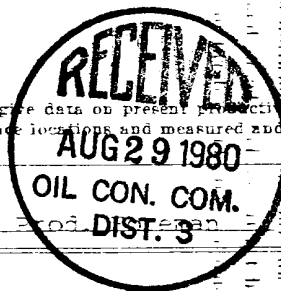
TITLE

DATE

TITLE

DATE

TITLE



NMOCC

from the outer boundaries of the Section.

Operator DOMO PETROLEUM CORPORATION			Lease DOMO-NAVAJO 22-22-7		Well No. 1
Unit Letter F	Section 22	Township 22N	Range 7W	County Sandoval	
Actual Footage Location of Well: 660 feet from the South line and 660 feet from the East line					
Ground Level Elev. 6755	Producing Formation Gallup		Pool Wildcat	Dedicated Acreage: 40 Acres	

1. Outline the acreage dedicated to the subject well by colored pencil or hatchure marks on the plat below.
2. If more than one lease is dedicated to the well, outline each and identify the ownership thereof (both as to working interest and royalty).
3. If more than one lease of different ownership is dedicated to the well, have the interests of all owners been consolidated by communitization, unitization, force-pooling, etc?

☐ Yes ☐ No If answer is "yes," type of consolidation _____

If answer is "no," list the owners and tract descriptions which have actually been consolidated. (Use reverse side of this form if necessary.) _____

No allowable will be assigned to the well until all interests have been consolidated (by communitization, unitization, forced-pooling, or otherwise) or until a non-standard unit, eliminating such interests, has been approved by the Commission.

Sec.		22	660'
660'		660'	660'

Scale: 1"=1000'

CERTIFICATION

I hereby certify that the information contained herein is true and complete to the best of my knowledge and belief.

H. D. Hollingsworth
Name

H. D. HOLLINGSWORTH

Position

Dir. & Prod. Foreman

Company

Dome Petroleum Corp.

Date

Aug. 1, 1980

I hereby certify that the well location shown on this plat was plotted from field notes of actual surveys made by me or under my supervision, and that the same is true and correct to the best of my knowledge and belief.

Date Surveyed

REGISTERED LAND ENGINEER
and
Registered Professional Engineer
and
Land Surveyor

Frederic R. Kent, Jr.
Frederic R. Kent, Jr.

Certificate No. 3950



DOME PETROLEUM CORP.

501 AIRPORT DRIVE

SUITE 107

FARMINGTON, NEW MEXICO 87401

TELEPHONE
(505) 325-2897

Development Plan For Surface Use
Dome Navajo 22-22-7, #1
790' FSL, 1095' FEL
Sandoval County, New Mexico

1. Existing Roads

The main road to the location is that from Lybrook, New Mexico going West approximately 10 miles toward Star Lake Road and using existing side road to the location.

2. Planned Access Roads

The access road, to be routed as shown on the attached map, will be approximately 300' long and 18' wide with adequate ditch and water bars.

3. Location Of Existing Wells

Existing wells within one mile of location are shown on the attached topographic map.

4. Location Of Proposed Facilities

Development of commercial production will require separation facilities on the location pad. Equipment and pits will be fenced as required for protection of livestock and wildlife. Above ground facilities will be painted brown or grey to blend in with the surrounding area as specified by the BLM. The disturbed areas no longer needed for operations after well completion will be restored to natural contour and reseeded.

5. Location & Type Of Water Supply

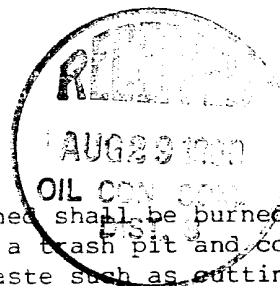
To be hauled from Chapman Ranch 15 miles to the North.

6. Source Of Construction Materials

Not applicable.

7. Method Of Handling Waste Material

All garbage and trash that can be burned shall be burned. All trash that cannot be burned will be contained in a trash pit and covered with a minimum of 24 inches of dirt. All drilling waste such as cuttings, overflows of oil, water, and drilling fluids will be contained in the reserve pit and buried with adequate cover upon completion of operations. The reserve pit will be fenced until cleanup operations are commenced. Toilet facilities will be provided.



8. Ancillary Facilities

No camps or airstrips are proposed for this location.

9. Well Site Layout

See attached diagram.

10. Plans For Restoration Of Surface

Cleanup of the location will commence immediately following the removal of the drilling equipment. The reserve pit will be fenced until restoration operations are commenced. The location will be returned to original contour if the well is not productive. Both the road and location will be reseeded in accordance with BLM specifications.

11. Other Information

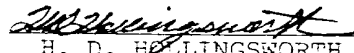
This location is on sparsely vegetated sandy land. Vegetation consists principally of sagebrush and native grasses. There is no water source in the immediate area.

12. Lessee's Or Operator's Representative

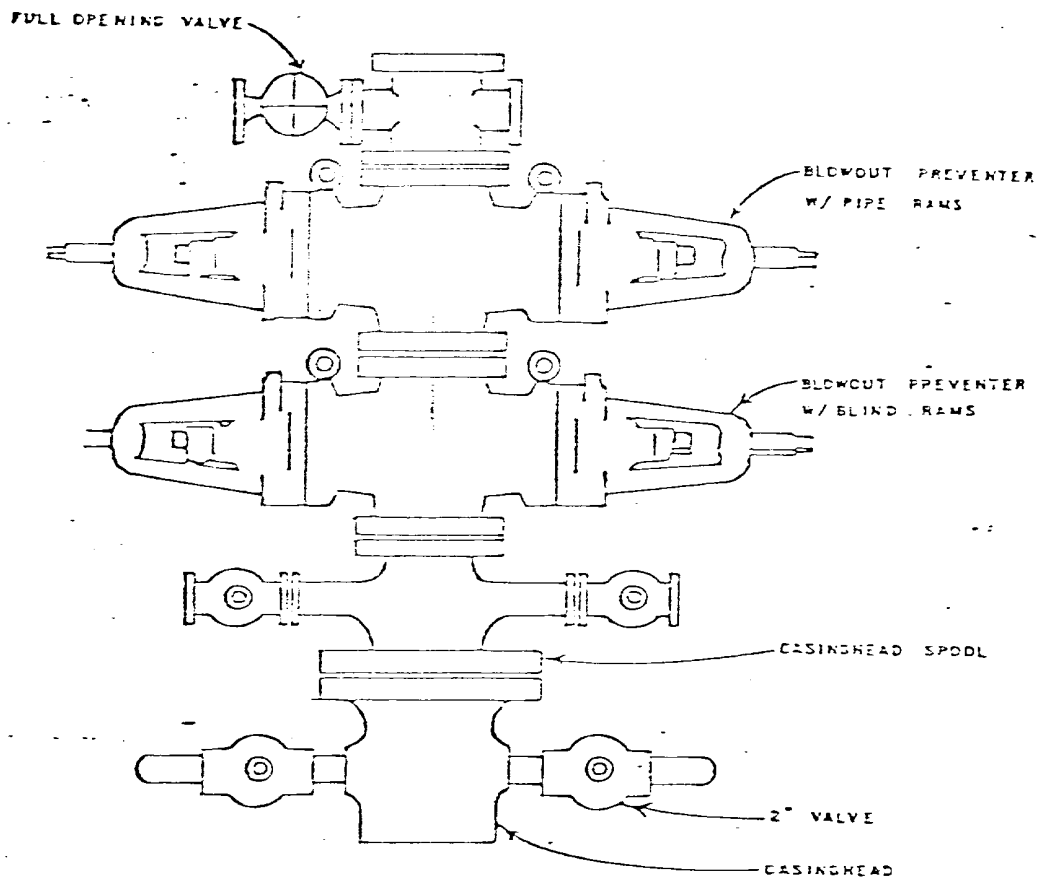
Dome Petroleum Corporation
H. D. Hollingsworth
501 Airport Drive, Suite 114
Farmington, New Mexico 87401
Phone: 505-325-2897 Office
505-327-1548 Home

13. Certification

I hereby certify that I, or persons under my direct supervision, have inspected the proposed drill site and access route; that I am familiar with the conditions which presently exist; that the statements made in this plan are, to the best of my knowledge, true and correct; and that the work associated with the operations proposed herein will be performed by Dome Petroleum Corp. and its contractors and subcontractors in conformity with this plan and the terms and conditions under which it is approved.


H. D. HOLLINGSWORTH
Drilling & Production Foreman
Dome Petroleum Corporation

HDH:ig
July 23, 1980



DOME PETROLEUM CORP.

SUITE 1500, COLORADO STATE BANK BLDG.

1600 BROADWAY

DENVER, COLORADO 80202

STANDARD BLOWOUT PREVENTER ASSEMBLY
10" 900 SERIES

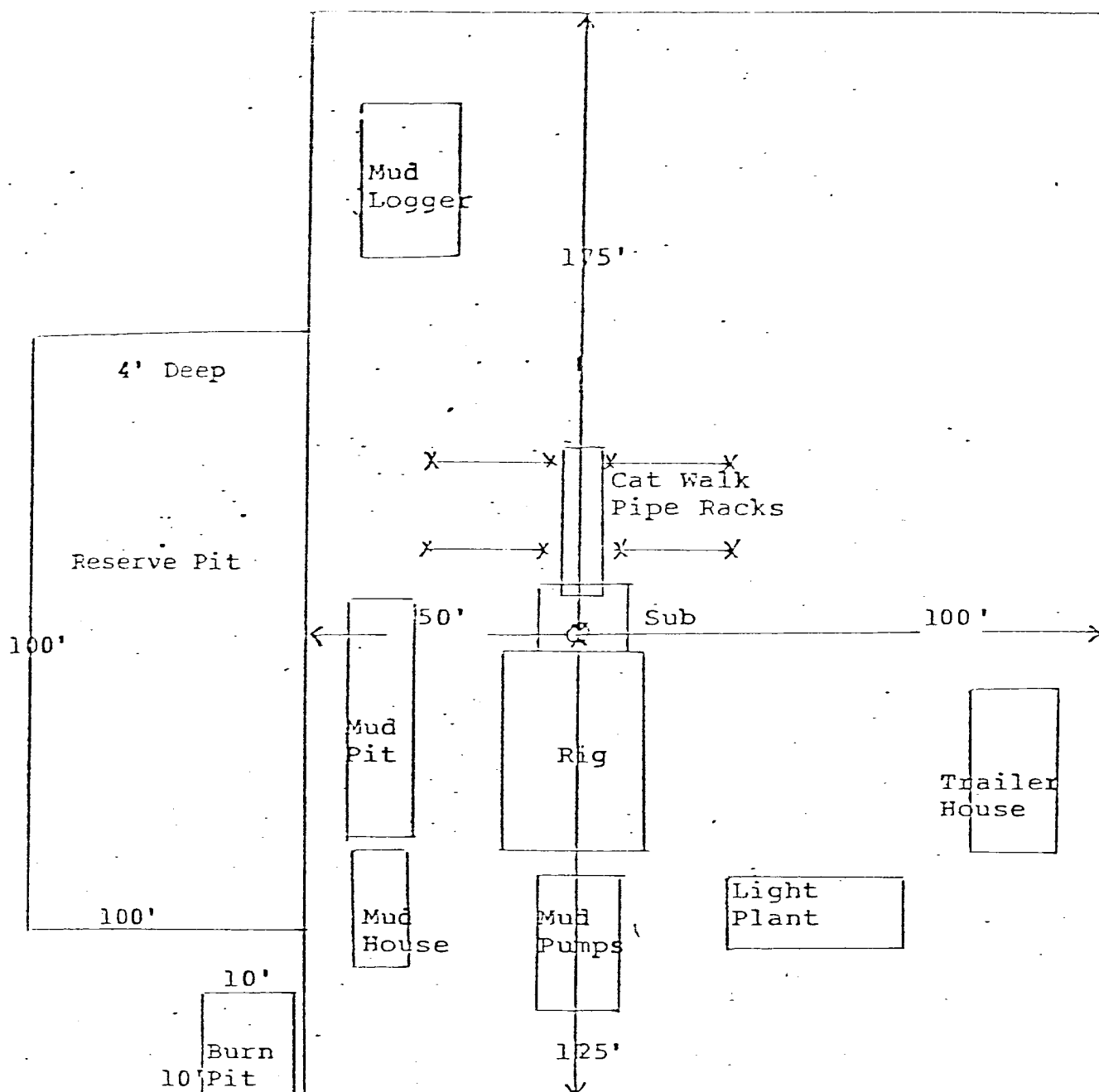


DIAGRAM OF WELL LOCATION

AND DRILLING RIG LAYOUT

