

UNITED STATES  
DEPARTMENT OF THE INTERIOR  
GEOLOGICAL SURVEY30-043-20715  
6. LEASE DESIGNATION AND SERIAL NO.  
Cont. 428

## APPLICATION FOR PERMIT TO DRILL, DEEPEN, OR PLUG BACK

## 1a. TYPE OF WORK

DRILL ☒DEEPEN ☐PLUG BACK ☐

## b. TYPE OF WELL

OIL  
WELL ☒GAS  
WELL ☐

OTHER

SINGLE  
ZONE ☒MULTIPLE  
ZONE ☐

## 2. NAME OF OPERATOR

Merrion Oil &amp; Gas Corporation

## 3. ADDRESS OF OPERATOR

P. O. Box 1017, Farmington, New Mexico 87499

## 4. LOCATION OF WELL (Report location clearly and in accordance with any State requirements.)\*

At surface

790' FNL and 1850' FWL

At proposed prod. zone

Same

## 14. DISTANCE IN MILES AND DIRECTION FROM NEAREST TOWN OR POST OFFICE\*

12 miles East of Counselors, New Mexico

## 15. DISTANCE FROM PROPOSED\*

LOCATION TO NEAREST  
PROPERTY OR LEASE LINE, FT.  
(Also to nearest drilg. unit line, if any)

790'

## 16. NO. OF ACRES IN LEASE

3282.52

## 18. DISTANCE FROM PROPOSED LOCATION\*

TO NEAREST WELL, DRILLING, COMPLETED,  
OR APPLIED FOR, ON THIS LEASE, FT.

2640'

## 19. PROPOSED DEPTH

5820

17. NO. OF ACRES ASSIGNED  
TO THIS WELL

40

## 20. ROTARY OR CABLE TOOLS

Rotary

## 21. ELEVATIONS (Show whether DF, RT, GR, etc.)

6915' GL

DRILLING OPERATIONS AUTHORIZED ARE  
SUBJECT TO COMPLIANCE WITH ATTACHED

## 22. APPROX. DATE WORK WILL START\*

Fall, 1984

## 23. PROPOSED Casing and Cementing Program

This action is subject to administrative  
appeal pursuant to 30 CFR 290.

| SIZE OF HOLE | SIZE OF CASING | WEIGHT PER FOOT | SETTING DEPTH | QUANTITY OF CEMENT |
|--------------|----------------|-----------------|---------------|--------------------|
| 12-1/4"      | 8-5/8"         | 24 #/ft.        | 200 ft.       | 175 (361 cu. ft.)  |
| 7-7/8"       | 4-1/2"         | 10.5 #/ft.      | 5820 ft.      | 1025 sx.           |

Will drill 12-1/4" surface hole to 200 ft. and set 200 ft. of 8-5/8", 24 #/ft, J-55 grade casing with 175 sx Class B cement with 3% CaCl<sub>2</sub>. Will drill 7-7/8" hole to 5820 ft. Will run open hole logs. No other testing planned. If well appears productive, will run 5820' of 4-1/2", 10.5 #/ft, J-55 grade casing and stage cement. First stage will cement with 225 sx Class H 2% gel (1.22 cu. ft/sk. yield) 275 cu. ft. cement to cover Gallup interval from TD. Estimated top of cement is 4720 ft. Will set stage collar @ 4631' below Point Lookout Formation. Second stage will cement with 700 sx Class H 2% gel (1.22 cu. ft/sk. yield) 1442 cu. ft. cement. Followed by 100 sx Class H 2% gel (1.22 cu. ft/sk. yield) 122 cu. ft. cement to cover Mesaverde, Chacra, Pictured Cliffs, Fruitland and Ojo Alamo. Top of cement will be surface.

Drilling circulating medium will be low solids, non dispersed, low water loss mud using bentonite, starch, CMC, and fresh water.

Minimum specifications for pressure control is 10", 900 series double ram blow out preventer. Will perforate and stimulate as required for completion.

IN ABOVE SPACE DESCRIBE PROPOSED PROGRAM: If proposal is to deepen or plug back, give data on present productive zone and proposed new productive zone. If proposal is to drill or deepen directionally, give pertinent data on subsurface locations and measured and true vertical depths. Give blowout preventer program, if any.

24.

SIGNED

TITLE Operations Manager

(This space for Federal or State office use)

PERMIT NO.

APPROVAL DATE

APPROVED BY

TITLE

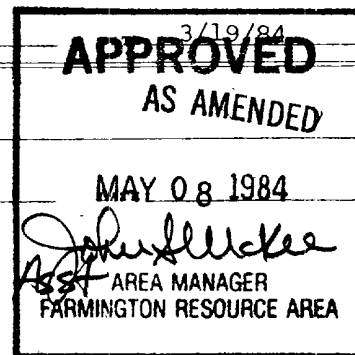
CONDITIONS OF APPROVAL

RECEIVED

MAY 10 1984

OIL CON. DIV.  
DIST. 3

NMOCC



## OIL CONSERVATION DIVISION

STATE OF NEW MEXICO  
ENERGY AND MINERALS DEPARTMENTP. O. BOX 2088  
SANTA FE, NEW MEXICO 87501Form C-107  
Revised 10-1-7

All distances must be from the outer boundaries of the Section.

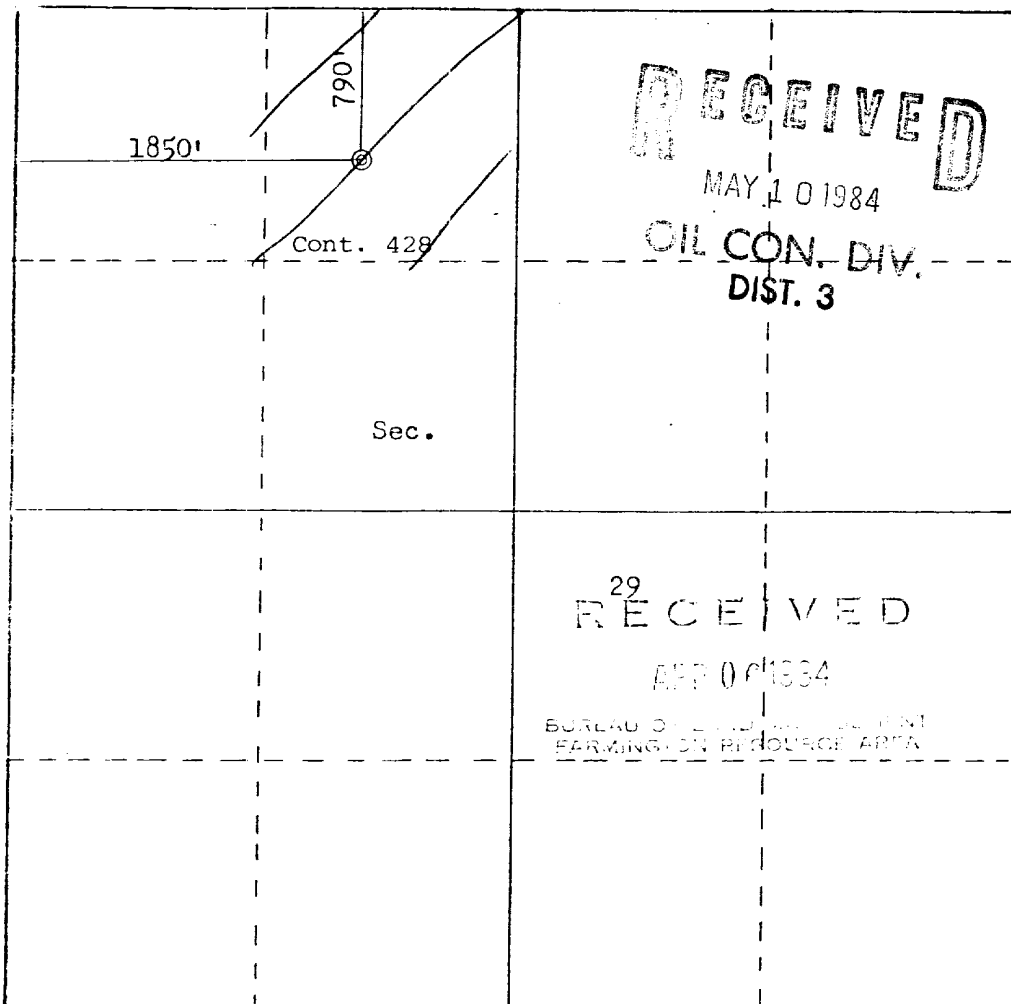
|   |                                      |                        |                                    |                           |                                       |
|---|--------------------------------------|------------------------|------------------------------------|---------------------------|---------------------------------------|
| Operator<br><b>MERRION OIL &amp; GAS CORPORATION</b>  |                                      |                        | Lease<br><b>JICARILLA 428</b>      |                           | Well No.<br><b>10</b>                 |
| Unit Letter<br><b>C</b>   | Section<br><b>29</b>                 | Township<br><b>23N</b> | Range<br><b>4W</b>                 | County<br><b>Sandoval</b> |                                       |
| Actual Footage Location of Well:<br><b>790</b> feet from the <b>North</b> line and <b>1850</b> feet from the <b>West</b> line |                                      |                        |                                    |                           |                                       |
| Ground Level Elev.<br><b>6915</b>   | Producing Formation<br><b>Gallup</b> |                        | Pool<br><b>Undesignated Gallup</b> |                           | Dedicated Acreage:<br><b>40</b> Acres |

1. Outline the acreage dedicated to the subject well by colored pencil or hachure marks on the plat below.
2. If more than one lease is dedicated to the well, outline each and identify the ownership thereof (both as to working interest and royalty).
3. If more than one lease of different ownership is dedicated to the well, have the interests of all owners been consolidated by communitization, unitization, force-pooling, etc?

☐ Yes ☐ No If answer is "yes," type of consolidation \_\_\_\_\_

If answer is "no," list the owners and tract descriptions which have actually been consolidated. (Use reverse side of this form if necessary.) \_\_\_\_\_

No allowable will be assigned to the well until all interests have been consolidated (by communitization, unitization, forced-pooling, or otherwise) or until a non-standard unit, eliminating such interests, has been approved by the Commission.



Scale: 1"=1000'

## CERTIFICATION

I hereby certify that the information contained herein is true and complete to the best of my knowledge and belief.

Name  
**Steve S. Dunn**

Position  
**Operations Manager**

Company  
**Merrion Oil & Gas Corporation**

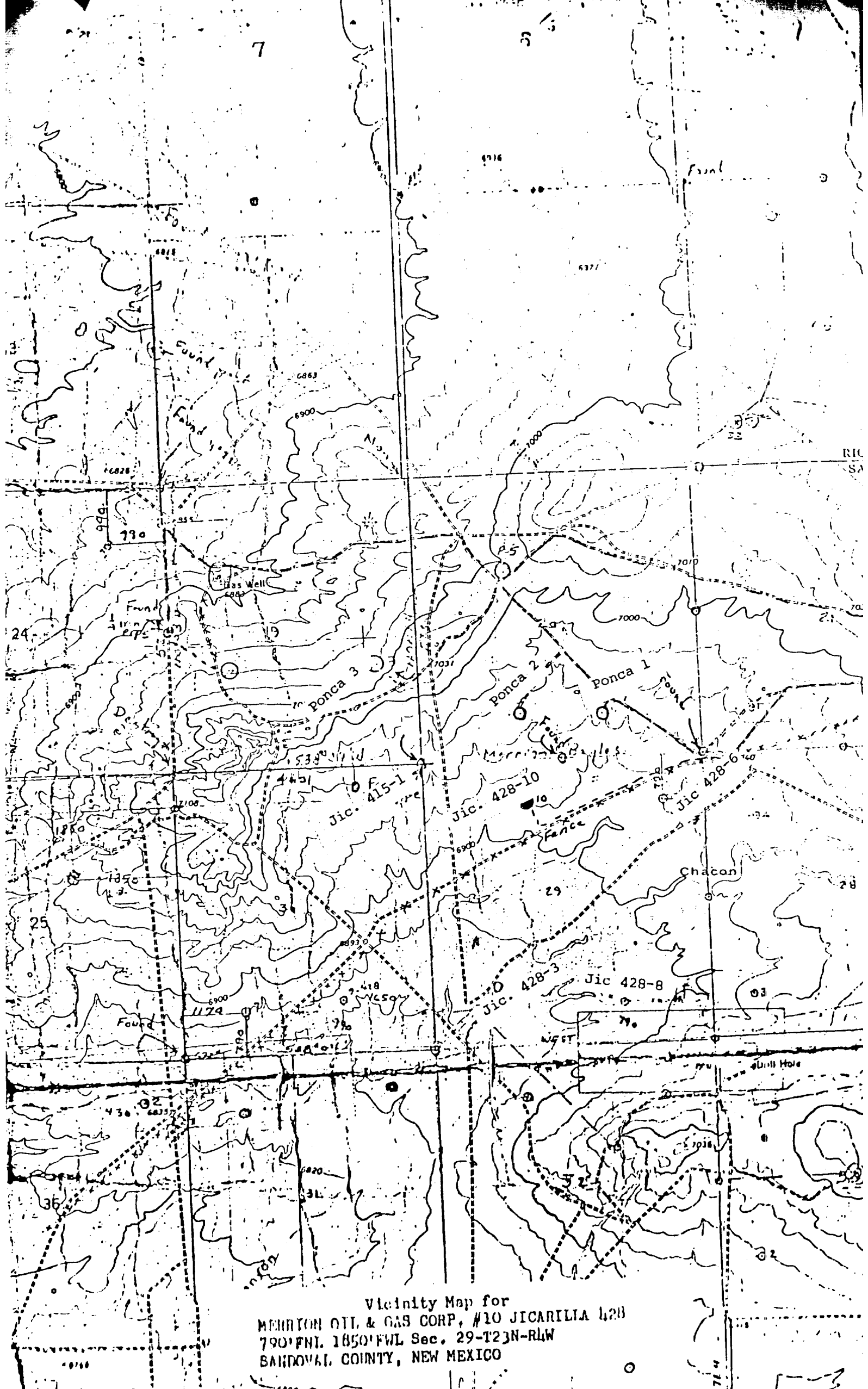
Date  
**3/19/84**

I hereby certify that the well location shown on this plat was plotted from field notes of actual surveys made by me or under my supervision, and that the same is true and correct to the best of my knowledge and belief.

Date Surveyed  
**March 2, 1984**

Registered Professional Engineer and Land Surveyor  
**Fred B. Kerr Jr.**

Certificate No.  
**3950**



Vicinity Map for  
MERRITON OIL & GAS CORP., #10 JICARILIA 428  
790' FWL 1850' FWL Sec. 29-T23N-R4W  
BANDOLAI COUNTY, NEW MEXICO