

NEW MEXICO OIL CONSERVATION COMMISSION  
Santa Fe, New Mexico

NOTICE OF INTENTION TO DRILL OR RECOMPLETE

Notice must be given to the District Office of the Oil Conservation Commission and approval obtained before drilling or recompletion begins. If changes in the proposed plan are considered advisable, a copy of this notice showing such changes will be returned to the sender. Submit this notice in **QUINTUPLICATE**. One copy will be returned following approval. See additional instructions in Rules and Regulations of the Commission.

**Denver, Colorado**  
(Place)

**November 16, 1956**  
(Date)

OIL CONSERVATION COMMISSION  
SANTA FE, NEW MEXICO

Gentlemen:

You are hereby notified that it is our intention to commence the (Drilling) ~~Recompletion~~ of a well to be known as  
**Sinclair Oil & Gas Company**  
(Company or Operator)

**Santa Fe 54, Cottonwood** Well No. **1**, in **1st** (Unit) The well is located **1900** feet from the **South** line and **1900** feet from the **East** line of Section **11**, T. **21 North**, R. **9 West**, NMPM.  
(GIVE LOCATION FROM SECTION LINE) **Wildcat** Pool, **San Juan** County

D	C	B	A
E	F	G	H
L	K	J	I
M	N	O	P

If State Land the Oil and Gas Lease is No.

If patented land the owner is **Patented**

Address.

We propose to drill well with drilling equipment as follows: **Rotary Tools**

The status of plugging bond is **Statewide**

Drilling Contractor **Contract not yet awarded**

We intend to complete this well in the **Hesperia - Gallup** formation at an approximate depth of **4400** feet.

CASING PROGRAM

We propose to use the following strings of Casing and to cement them as indicated:

Size of Hole	Size of Casing	Weight per Foot	New or Second Hand	Depth	Sacks Cement
<b>12-1/4"</b>	<b>8-5/8"</b>	<b>24#</b>	<b>N</b>	<b>50'</b>	<b>70</b>
<b>7-7/8"</b>	<b>5-1/2"</b>	<b>17#</b>	<b>N</b>	<b>4400'</b>	<b>300</b>

If changes in the above plans become advisable we will notify you immediately.

ADDITIONAL INFORMATION (If recompletion give full details of proposed plan of work.)

Approved  
Except as follows:

By **Ernest C. Connelley**  
Title

Sincerely yours,

**Sinclair Oil & Gas Company**  
(Company or Operator)

By **J. A. Jackman**

Position **Division Supt. Production**  
Send Communications regarding well to

Name **J. A. Jackman**

Address **601 Denver Club Building, Denver, Colorado**



<b>OIL CONSERVATION COMMISSION</b>		
<b>AZTEC DISTRICT OFFICE</b>		
No. Copies Received		
<b>DISTRIBUTION</b>		
	NO. FURNISHED	
Operator		
Santa Fe		
Proration Office		
State Land Office		
U. S. G. S.		
Transporter		
File		

NEW MEXICO  
OIL CONSERVATION COMMISSION

Form C-128

Well Location and/or Gas Proration Plat

Date 11-16-56

Operator Sinclair Oil & Gas Company

Lease Santa Fe 54 Cottonwood

Well No. 1 ~~600000000~~ Section 11 Township 21 North Range 9 West NMPM  
Unit

Located 1980 Feet From South Line, 1980 Feet From East Line,

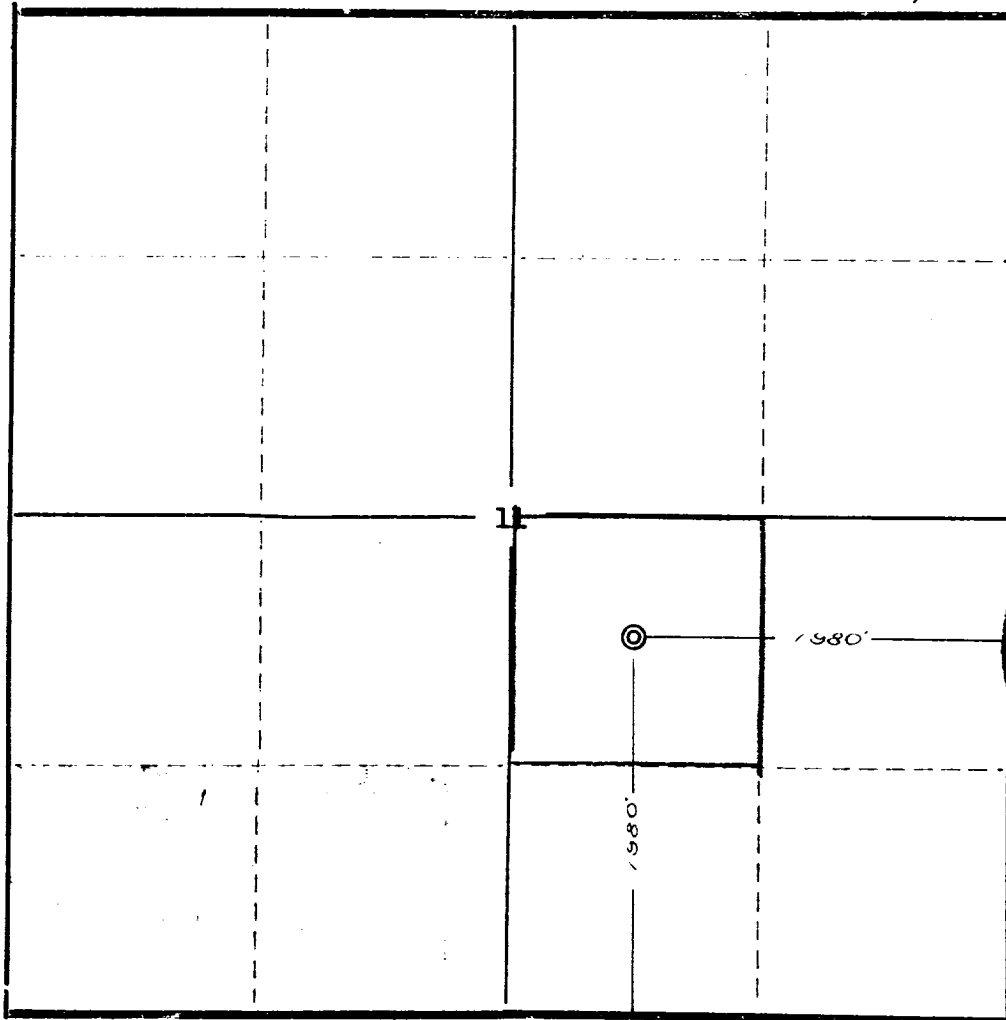
San Juan

County, New Mexico.

G. L. Elevation 6476

Name of Producing Formation Hospah-Gallup Pool Wildcat Dedicated Acreage 40

(Note: All distances must be from outer boundaries of Section)



NOTE

This section of form is to be used for gas wells only.

RECEIVED  
NOV 19 1956  
OIL CON. COM.  
DIST. 3

SCALE: 1" = 1000'

1. Is this Well a Dual Comp. ? Yes. No ..
2. If the answer to Question 1 is yes, are there any other dually completed wells within the dedicated acreage?  
Yes. No ..

Name .....

Position .....

Representing .....

Address .....

This is to certify that the above plat was prepared from field notes of actual surveys made by me or under my supervision and that the same are true and correct to the best of my knowledge and belief.

Date Surveyed July 25, 1956

Ernest V. Echohawk

Ernest V. Echohawk  
Reg. Land Surveyor, N. Mex., Reg. No. 1545

<b>OIL CONSERVATION COMMISSION</b>		
<b>AZTEC DISTRICT OFFICE</b>		
No. Copies Received <u>3</u>		
<b>DISTRIBUTION</b>		
	<b>NO. FURNISHED</b>	
Operator	<u>1</u>	
Santa Fe	<u>1</u>	
Proration Office		
State Land Office		
U. S. G. S.	<u>2</u>	
Transporter		
File	<u>1</u>	<input checked="" type="checkbox"/>