

UNITED STATES  
DEPARTMENT OF THE INTERIOR  
GEOLOGICAL SURVEY

## APPLICATION FOR PERMIT TO DRILL, DEEPEN, OR PLUG BACK

## 1a. TYPE OF WORK

DRILL ☒DEEPEN ☐PLUG BACK ☐

## b. TYPE OF WELL

OIL  
WELL ☐GAS  
WELL ☐

OTHER \*Strat Test

SINGLE  
ZONE ☐MULTIPLE  
ZONE ☐

## 2. NAME OF OPERATOR

Mobil Oil Corporation

## 3. ADDRESS OF OPERATOR

P. O. Box 633, Midland, Texas 79701

## 4. LOCATION OF WELL (Report location clearly and in accordance with any State requirements.)

At surface  
660' FSL & 1980' FEL, Sec. 6, T21N, R15W

At proposed prod. zone \*

## 14. DISTANCE IN MILES AND DIRECTION FROM NEAREST TOWN OR POST OFFICE

## 10. DISTANCE FROM PROPOSED\*

LOCATION TO NEAREST  
PROPERTY OR LEASE LINE, FT.  
(Also to nearest drlg. unit line, if any)

## 18. DISTANCE FROM PROPOSED LOCATION\*

TO NEAREST WELL, DRILLING, COMPLETED,  
OR APPLIED FOR, ON THIS LEASE, FT.

## 21. ELEVATIONS (Show whether DF, RT, GR, etc.)

5753.6 Ground

## 16. NO. OF ACRES IN LEASE

2554.21 - Surveyed  
(2553 - Lease)

## 19. PROPOSED DEPTH

5000'

17. NO. OF ACRES ASSIGNED  
TO THIS WELL \*

## 20. ROTARY OR CABLE TOOLS

Rotary

## 12. COUNTY OR PARISH

San Juan

## 13. STATE

New Mexico

## 5. LEASE DESIGNATION AND SERIAL NO.

6. IF INDIAN, ALLOTTEE OR TRIBE NAME  
Navajo - Contract #N00-  
C-14-20-5470

## 7. UNIT AGREEMENT NAME

## 8. FARM OR LEASE NAME

Navajo "C"

## 9. WELL NO.

1

## 10. FIELD AND POOL, OR WILDCAT

Wildcat

11. SEC., T., R., M., OR BLK.  
AND SURVEY OR AREA

Sec. 6, T21N, R15W

## 12. COUNTY OR PARISH

San Juan

## 13. STATE

New Mexico

## 23. PROPOSED CASING AND CEMENTING PROGRAM

SIZE OF HOLE	SIZE OF CASING	WEIGHT PER FOOT	SETTING DEPTH	QUANTITY OF CEMENT
8-3/4"	7"	17# - H-40	300'	Circulate to surface
5-5/8-6-1/4"	Open Hole	-	-	with Class A Cement

## MUD PROGRAM:

From	To	Type Mud	Weight	Viscosity	PH	Water Loss
0	300'	Spud Mud	No Control			
300'	T.D.	Fresh Water w/additions of Gel as necessary	9.0-10.5	30-45	9+	NC

## DIAGRAMMATIC SKETCH OF BLOWOUT PREVENTER ATTACHED

\*This well to be drilled for information only and will not be produced.

IN ABOVE SPACE DESCRIBE PROPOSED PROGRAM: If proposal is to deepen or plug back, give data on present productive zone and proposed new productive zone. If proposal is to drill or deepen directionally, give pertinent data on subsurface locations and measured and true vertical depths. Give blowout preventer program, if any.

24.

SIGNED A. D. Bond A. D. Bond TITLE Proration Staff Assistant DATE April 24, 1975

(This space for Federal or State office use)

PERMIT NO. \_\_\_\_\_ APPROVAL DATE \_\_\_\_\_

APPROVED BY \_\_\_\_\_ TITLE \_\_\_\_\_ DATE \_\_\_\_\_  
CONDITIONS OF APPROVAL, IF ANY:

NEW MEXICO OIL CONSERVATION COMMISSION  
WELL LOCATION AND ACREAGE DEDICATION PLAT

Form C-102  
Supersedes C-128  
Effective 1-1-65

All distances must be from the outer boundaries of the Section.

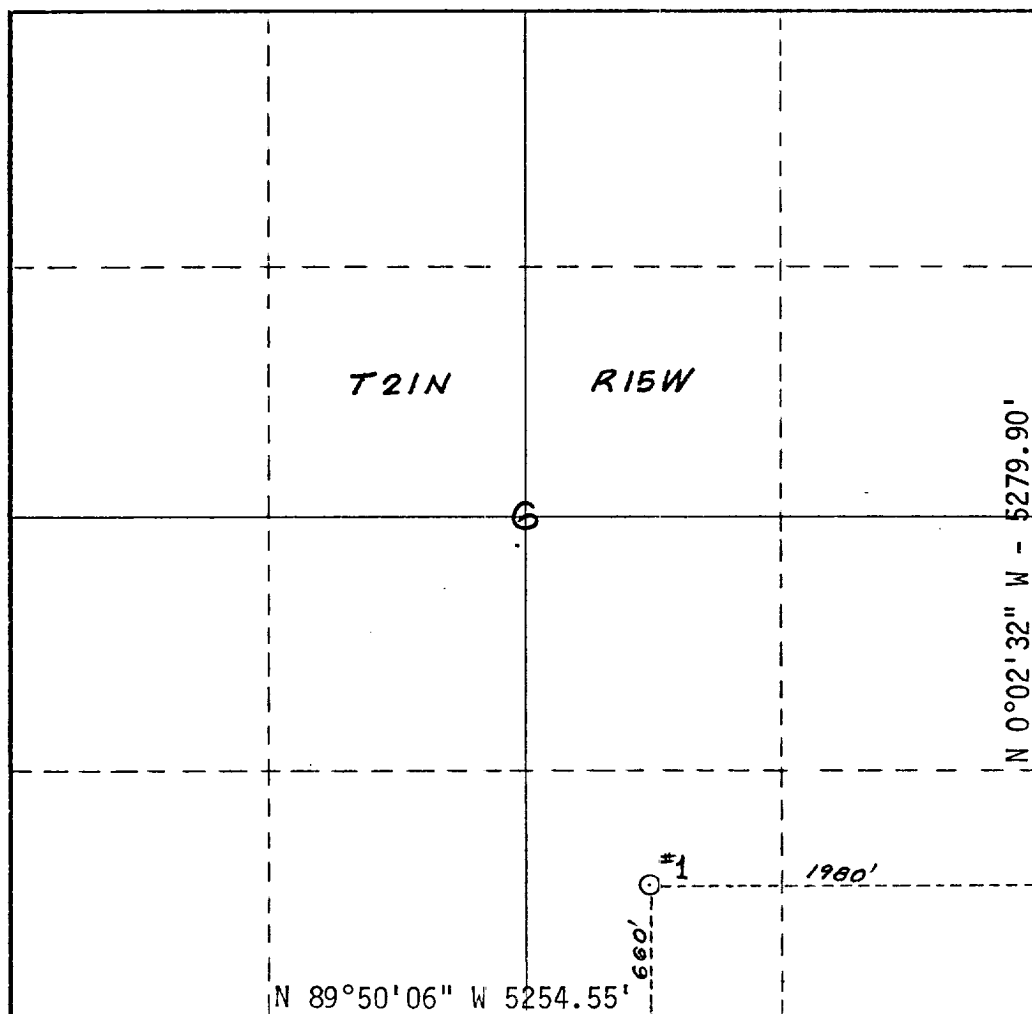
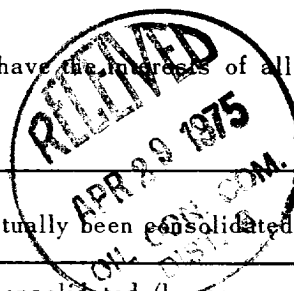
Operator <b>Mobil Oil Corporation</b>			Lease <b>Navajo "C"</b>		Well No. <b>1</b>
Unit Letter <b>0</b>	Section <b>6</b>	Township <b>21N</b>	Range <b>15W</b>	County <b>San Juan</b>	
Actual Footage Location of Well: <b>660</b> feet from the <b>South</b> line and <b>1980</b> feet from the <b>East</b> line					
Ground Level Elev. <b>5753.6</b>	Producing Formation <b>Dakota</b>		Pool <b>Wildcat</b>		Dedicated Acreage: <b>Strat Test</b> Acres

1. Outline the acreage dedicated to the subject well by colored pencil or hachure marks on the plat below.
2. If more than one lease is dedicated to the well, outline each and identify the ownership thereof (both as to working interest and royalty).
3. If more than one lease of different ownership is dedicated to the well, have the interests of all owners been consolidated by communitization, unitization, force-pooling, etc?

☐ Yes ☐ No If answer is "yes," type of consolidation \_\_\_\_\_

If answer is "no," list the owners and tract descriptions which have actually been consolidated. (Use reverse side of this form if necessary.) \_\_\_\_\_

No allowable will be assigned to the well until all interests have been consolidated (by communitization, unitization, forced-pooling, or otherwise) or until a non-standard unit, eliminating such interests, has been approved by the Commission.



CERTIFICATION

I hereby certify that the information contained herein is true and complete to the best of my knowledge and belief.

*A. D. Bond*  
Name  
**A. D. Bond**  
Position  
**Proration Staff Assistant**  
Company  
**Mobil Oil Corporation**  
Date  
**April 24, 1975**

I hereby certify that the well location shown on this plat was plotted from field notes of actual surveys made by me or under my supervision, and the same is true and correct to the best of my knowledge and belief.

*Curtis A. Callaway*  
Date Surveyed  
**April 2, 1975**  
Registered Professional Engineer and/or Land Surveyor  
**Curtis A. Callaway**  
No. 3342

Certificate No.  
**3342**