

UNITED STATES
DEPARTMENT OF THE INTERIOR
GEOLOGICAL SURVEY

APPLICATION FOR PERMIT TO DRILL, DEEPEN, OR PLUG BACK

1a. TYPE OF WORK

DRILL ☒

DEEPEN ☐

PLUG BACK ☐

b. TYPE OF WELL

OIL WELL ☒

GAS WELL ☐

OTHER

SINGLE ZONE ☒

MULTIPLE ZONE ☐

2. NAME OF OPERATOR

Kenai Oil & Gas Inc.

3. ADDRESS OF OPERATOR

2000 Energy Center One, 717-17th St., Denver, Colorado 80202

4. LOCATION OF WELL (Report location clearly and in accordance with any State requirements.)

At surface

850' FNL, 1700' FEL
At proposed prod. zone

14. DISTANCE IN MILES AND DIRECTION FROM NEAREST TOWN OR POST OFFICE*

Cuba, New Mexico-39 miles

10. DISTANCE FROM PROPOSED*

LOCATION TO NEAREST

PROPERTY OR LEASE LINE, FT.

(Also to nearest drlg. unit line, if any)

850'

18. DISTANCE FROM PROPOSED LOCATION* TO NEAREST WELL, DRILLING, COMPLETED, OR APPLIED FOR, ON THIS LEASE, FT.

None

21. ELEVATIONS (Show whether DF, RT, GR, etc.)

6876 G.L.

23.

PROPOSED CASING AND CEMENTING PROGRAM

SIZE OF HOLE	SIZE OF CASING	WEIGHT PER FOOT	SETTING DEPTH	QUANTITY OF CEMENT
12 1/2	8 5/8	24#	550'	300 sx circulate
7 7/8	4 1/2	10.5	5450	500 sx Class "H"

Selectively test, perforate and sandwater fracture the Gallup formation. A 3000 psi WP and 6000 psi test double gate preventer equipped with blind and pipe rams will be used for blow out prevention.

The NWNE of Section 9 is dedicated to this well.



IN ABOVE SPACE DESCRIBE PROPOSED PROGRAM: If proposal is to deepen or plug back, give data on present productive zone and proposed new productive zone. If proposal is to drill or deepen directionally, give pertinent data on subsurface locations and measured and true vertical depths. Give blowout preventer program, if any.

24.

SIGNED

Harold W. Sledge

TITLE

Agent

DATE

8-7-80

(This space for Federal or State office use)

PERMIT NO.

APPROVAL DATE

APPROVED BY

CONDITIONS OF APPROVAL, IF ANY:

TITLE

DATE

*See Instructions On Reverse Side

OIL CONSERVATION DIVISION

P. O. BOX 2088

SANTA FE, NEW MEXICO 87501

Form C-107
 Revised 10-1-78

All distances must be from the outer boundaries of the Section

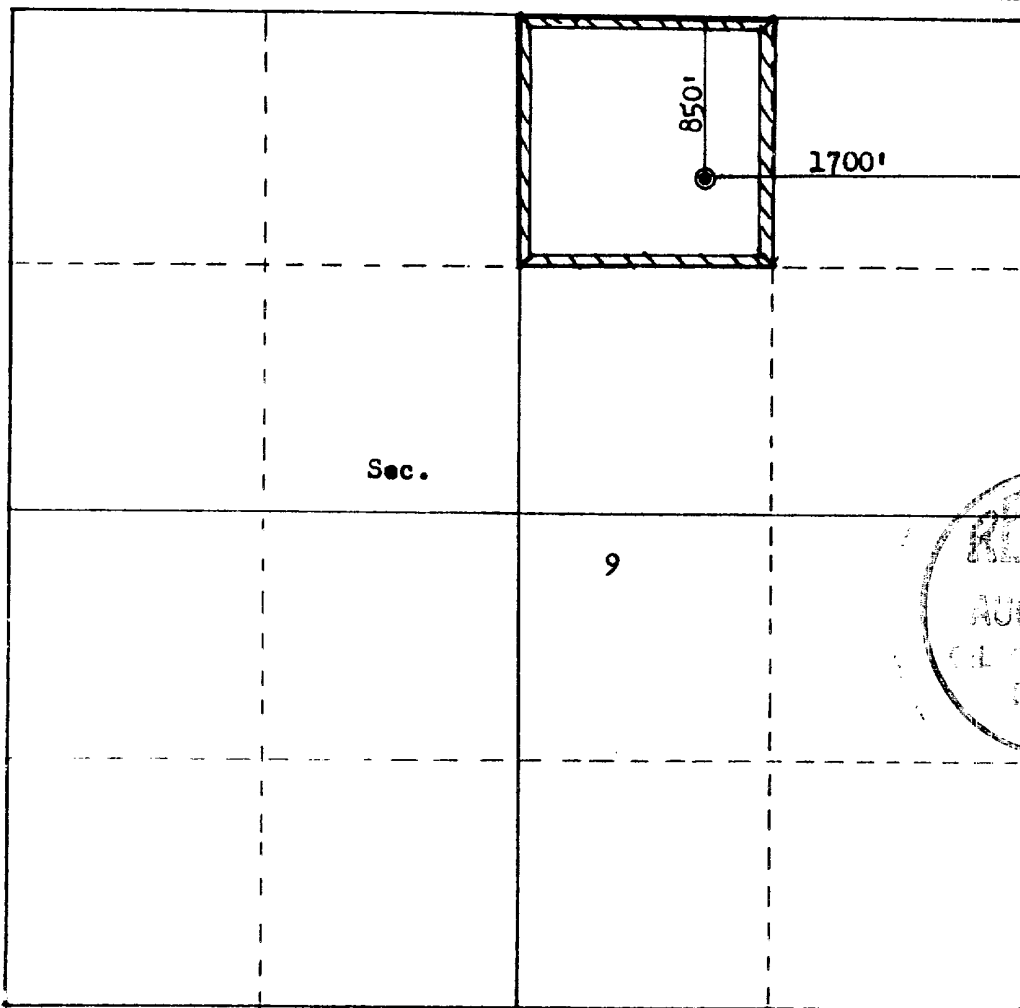
Operator KENAI OIL & GAS, INCORPORATED			Lease FEDERAL 9		Well No. 31
Unit Letter B	Section 9	Township 23N	Range 8W	County San Juan	
Actual Footage Location of Well:					
850 feet from the North line and		1700 feet from the East line			
Ground Level Elev. 6876	Producing Formation Gallup	Pool NA95221	Dedicated Acreage: 40 Acres		

1. Outline the acreage dedicated to the subject well by colored pencil or hachure marks on the plat below.
2. If more than one lease is dedicated to the well, outline each and identify the ownership thereof (both as to working interest and royalty).
3. If more than one lease of different ownership is dedicated to the well, have the interests of all owners been consolidated by communitization, unitization, force-pooling, etc?

☐ Yes ☐ No If answer is "yes," type of consolidation _____

If answer is "no," list the owners and tract descriptions which have actually been consolidated. (Use reverse side of this form if necessary.) _____

No allowable will be assigned to the well until all interests have been consolidated (by communitization, unitization, forced-pooling, or otherwise) or until a non-standard unit, eliminating such interests, has been approved by the Commission.



Scale: 1"=1000'

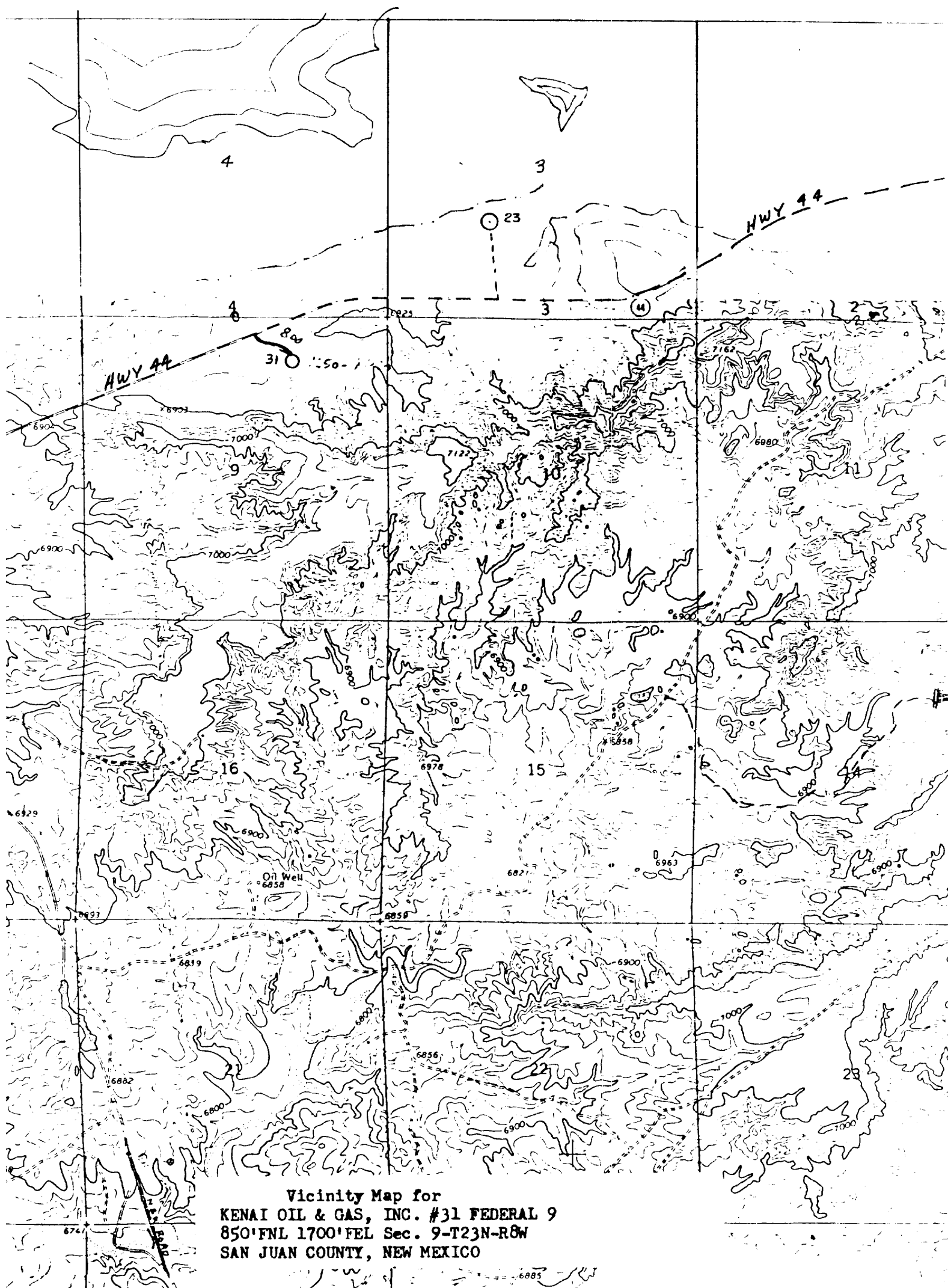
CERTIFICATION

I hereby certify that the information contained herein is true and complete to the best of my knowledge and belief.

Name *[Signature]*
 Position Agent
 Company Kenai Oil & Gas Inc.
 Date 8-7-1980

I hereby certify that the well location shown on this plat was plotted from field notes of actual surveys made by me or under my supervision, and that the same is true and correct to the best of my knowledge and belief.

Date Surveyed August 1, 1980
 Registered Professional Engineer and Land Surveyor
[Signature]
 Fred B. Kern Jr.
 Certificate No. 3950



Vicinity Map for
 KENAI OIL & GAS, INC. #31 FEDERAL 9
 850'FNL 1700'FEL Sec. 9-T23N-R6W
 SAN JUAN COUNTY, NEW MEXICO