

UNITED STATES
DEPARTMENT OF THE INTERIOR
GEOLOGICAL SURVEY

APPLICATION FOR PERMIT TO DRILL, DEEPEN, OR PLUG BACK

1a. TYPE OF WORK

DRILL ☒DEEPEN ☐PLUG BACK ☐

b. TYPE OF WELL

OIL
WELL ☒GAS
WELL ☐

OTHER

SINGLE
ZONE ☒MULTIPLE
ZONE ☐

2. NAME OF OPERATOR

Dugan Production Corp.

3. ADDRESS OF OPERATOR

P O Box 208, Farmington, NM 87499

4. LOCATION OF WELL (Report location clearly and in accordance with any State requirements.)

At surface

1980' FNL - 660' FWL

At proposed prod. zone

14. DISTANCE IN MILES AND DIRECTION FROM NEAREST TOWN OR POST OFFICE*

7 miles west of Nageezi Trading Post

15. DISTANCE FROM PROPOSED*

LOCATION TO NEAREST
PROPERTY OR LEASE LINE, FT.
(Also to nearest drlg. unit line, if any)

660' FWL

18. DISTANCE FROM PROPOSED LOCATION*
TO NEAREST WELL, DRILLING, COMPLETED,
OR APPLIED FOR, ON THIS LEASE, FT.1700' from
Witty #4

16. NO. OF ACRES IN LEASE

1080.00

19. PROPOSED DEPTH

5025'

17. NO. OF ACRES ASSIGNED
TO THIS WELL

40

20. ROTARY OR CABLE TOOLS

Rotary

21. ELEVATIONS (Show whether DF, RT, GR, etc.)

6755' GL; 6767' RKB

22. APPROX. DATE WORK WILL START*

ASAP

23.

DRILLING OPERATIONS AUTHORIZED ARE

SUBJECT TO COMPLIANCE WITH ATTACHED

PROPOSED CASING AND CEMENTING PROGRAM

"GENERAL REQUIREMENTS"

This action is subject to administrative
appeal pursuant to 30 CFR 290.

SIZE OF HOLE	SIZE OF CASING	WEIGHT PER FOOT	SETTING DEPTH	QUANTITY OF CEMENT
12-1/4"	8-5/8"	24#	200'	147 cf circulated to surface
7-7/8"	4-1/2"	10.5#	5025'	1939 cf circulated to surface

Plan to drill a 12-1/4" hole and set 200' of 8-5/8" OD, 24#, K-55 surface casing; then plan to drill 7-7/8" hole to total depth with gel-water-mud program to test Gallup formation. Plan to run IES and CDL logs. If deemed productive, will run 4-1/2", 10.5#, J-55 casing, selectively perforate, frac, clean out after frac, and complete well.

RECEIVED

JUL 25 1984

OIL CON. DIV.
DIST. 3

IN ABOVE SPACE DESCRIBE PROPOSED PROGRAM: If proposal is to deepen or plug back, give data on present productive zone and proposed new productive zone. If proposal is to drill or deepen directionally, give pertinent data on subsurface locations and measured and true vertical depths. Give blowout preventer program, if any.

24.

SIGNED

Sherman E. Dugan
Sherman E. Dugan

TITLE

Geologist

PERMIT NO.

APPROVAL DATE

APPROVED BY

TITLE

CONDITIONS OF APPROVAL, IF ANY:

h7

*See Instructions On Reverse Side

APPROVED
AS AMENDED

JUL 24 1984

Val L. Stan McKee

AREA MANAGER
FARMINGTON RESOURCE AREA

OIL CONSERVATION DIVISION

P. O. BOX 2088

SANTA FE, NEW MEXICO 87501

Form C-102
Revised 10-1-78STATE OF NEW MEXICO
ENERGY AND MINERALS DEPARTMENT

All distances must be from the outer boundaries of the Section.

Operator Dugan Production Corporation		Lease Witty		Well No. 3	
Section Letter E	Section 12	Township 23 North	Range 10 West	County San Juan	
Actual Footage Location of Well: 1980 feet from the North line and 660 feet from the West line Surface Level Elev. 6755 Producing Formation Gallup Pool Undesignated Gallup Dedicated Acreage: 40 Acres					

1. Outline the acreage dedicated to the subject well by colored pencil or hatchure marks on the plat below.
2. If more than one lease is dedicated to the well, outline each and identify the ownership thereof (both as to working interest and royalty).
3. If more than one lease of different ownership is dedicated to the well, have the interests of all owners been consolidated by communitization, unitization, force-pooling, etc?

☐ Yes ☐ No If answer is "yes," type of consolidation _____

If answer is "no," list the owners and tract descriptions which have actually been consolidated. (Use reverse side of this form if necessary.) _____

No allowable will be assigned to the well until all interests have been consolidated (by communitization, unitization, forced-pooling, or otherwise) or until a non-standard unit, eliminating such interests, has been approved by the Division.

RECEIVED

JUL 25 1984

OIL CON. DIV.
DIST 3

1980'		
660'		
100% Dugan Prod. Lease No. - NM 16762	Sec 12	

CERTIFICATION

I hereby certify that the information contained herein is true and complete to the best of my knowledge and belief.

Sherman E. Dugan
 Name

 Sherman E. Dugan
 Position

Geologist

 Company
 Dugan Production Corp.

 Date
 7-13-84

I hereby certify that the well location shown on this plat was plotted from field notes of 1979 made by me or under my supervision, and that the same is true and correct to the best of my knowledge and belief.

 Date Surveyed
 June 30, 1984

 Registered Professional Engineer
 and/or Land Surveyor

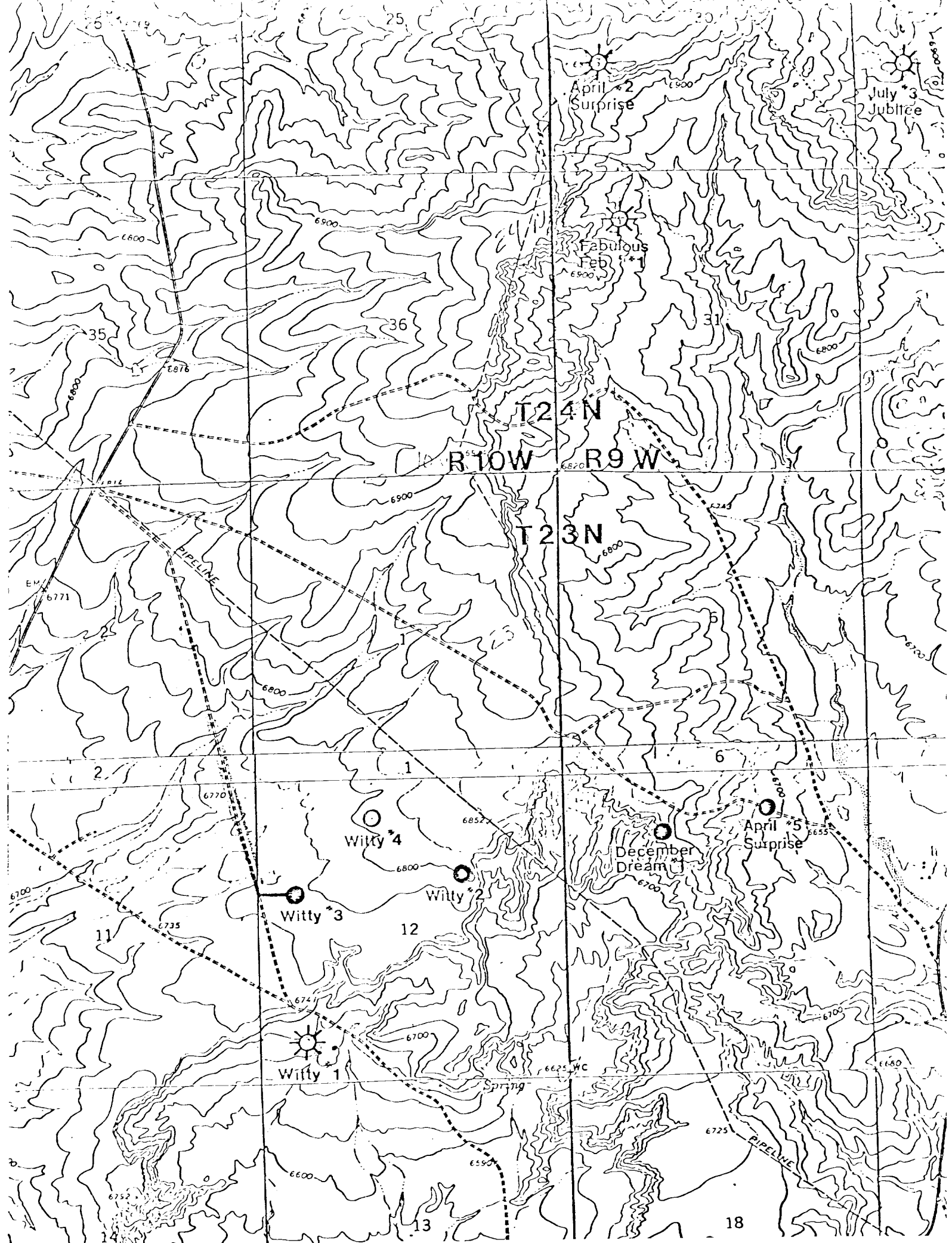
Edgar L. Risenhoover
 Certificate No. 5979

Edgar L. Risenhoover, L.S.

EXHIBIT A

DEVELOPMENTAL PLAN
Dugan Production Corp.
Witty #3 Well
T-23-N, R-10-W, NMPM
Sec. 12: 1980' FNL & 660' FWL
San Juan Co, New Mexico

1. Existing roads are shown on Exhibit E.
Plan to improve and/or maintain existing roads as follows: Plan to build 700' of access road to location from existing road.
2. Planned access road(s) are shown on Exhibit E.
 - A. New or reconstructed roads(s), if any, were centerline-flagged at the time of location staking.
 - B. Access road crosses Federal land.
3. Location of existing wells is shown on Exhibit F.
4. Location of existing and/or proposed facilities
 - A. Existing facilities owned or controlled by lessee/operator are shown on Exhibit F.
 - B. New facilities, in the event of production, are shown on Exhibit F.
Construction materials and methods: Materials obtained on site; work to be performed with a bulldozer.
Protective measures and devices to protect livestock and wildlife: As Required.
 - C. Plan for rehabilitation of disturbed areas no longer needed for operations after construction completed: As Required.
5. Location and Type of Water Supply
 - A. Location and type of water supply: 16 G's Waterwell, 8 miles East.
 - B. Method of transporting water: Water Truck.
 - C. Water well is not to be drilled on lease.
6. Source of Construction Materials
 - A. Materials are to be obtained on site.
 - B. These materials are from Federal land.
 - C. These materials are to be used as follows: Level location, build pits, construct roadway to location.
7. Methods for Handling Waste Disposal
 - A. Waste materials will be contained/disposed of as follows:
 - 1) Cuttings: Reserve Pit.
 - 2) Drilling fluids: Reserve Pit.
 - 3) Produced fluids (oil, water): Reserve Pit.
 - 4) Sewage: Drilling Contractor will provide facilities.
 - 5) Drilling contractor will provide a portable trash pit.
 - 6) Operator will be responsible for proper cleanup when the rig is moved.
 - 7) Reserve pits will be fenced on three sides during the drilling operations and on four sides when the rig is moved from location.
8. Ancillary facilities: No permanent camp is planned; No trailer house will be used on location while drilling. No airstrip is planned.



DUGAN PRODUCTION CORP. - Witty #3
Existing Roads

Distance from nearest town or reference pt.
7 miles to Nageezi Trading Post

Type of surface dirt

Conditions good

Other

DUGAN PRODUCTION CORP. - Witty #3
Planned Access Road(s)

Width	20'	Maximum grades	1%
Drainage design	None Required		
Cuts & Fills	None Required		
Surfacing material	On site		
Turnouts			
Culverts			
Gates			
Cattleguards			
Fence cuts			

Access road(s) do not cross Fed Ind land.