

STATE OF NEW MEXICO

ENERGY AND MINERALS DEPARTMENT
OIL CONSERVATION DIVISION



GARREY CARRUTHERS
GOVERNOR

March 20, 1987

POST OFFICE BOX 2088
STATE LAND OFFICE BUILDING
SANTA FE, NEW MEXICO 87501
(505) 827-5800

Dugan Production Corp.
P. O. Box 208
Farmington, New Mexico 87499-0208

Attention: Jim L. Jacobs

Administrative Order NSL-2329

Gentlemen:

Reference is made to your application for a non-standard location for your Louie Louie No. 1 to be located 2290 feet from the South line and 710 feet from the West line of Section 8, Township 23 North, Range 9 West, NMPM, South Bisti Gallup Pool, San Juan County, New Mexico. The W/2 SW/4 of said Section 8 shall be dedicated to the well.

By authority granted me under the provisions of Rule 104 F(I), the above-described unorthodox location is hereby approved.

Sincerely,

A handwritten signature in cursive script, appearing to read "William J. Lemay".

WILLIAM J. LEMAY, DIRECTOR

WJL/DC/dr

cc: Oil Conservation Division - Aztec
Bureau of Land Management - Farmington

RECEIVED
MAR 24 1987
WILLIAM J. LEMAY
DIRECTOR



STATE OF NEW MEXICO
ENERGY AND MINERALS DEPARTMENT

OIL CONSERVATION DIVISION
AZTEC DISTRICT OFFICE

1000 RIO BRAZOS ROAD
AZTEC, NEW MEXICO 87410
(505) 334-6178

OIL CONSERVATION DIVISION
BOX 2088
SANTA FE, NEW MEXICO 87501

DATE 3-10-87

RE: Proposed MC _____
Proposed DHC _____
Proposed NSL / _____
Proposed SWD _____
Proposed WFX _____
Proposed PMX _____

Gentlemen:

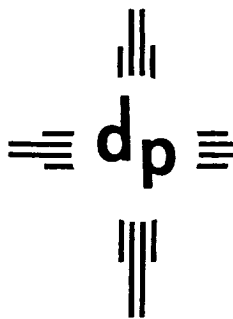
I have examined the application dated 3-5-87
for the Dugan Production Corp. Louie Louie #1 L-8-23N-9W
Operator Lease and Well No. Unit, S-T-R

and my recommendations are as follows:

Approve

Yours truly,

Eric Busch



dugan production corp.

COPY

March 3, 1987

Mr. Bill LeMay
New Mexico Oil Conservation Division
Box 2088
Santa Fe, NM 87501

Re: Application for Administrative Approval of
Unorthodox Location for Dugan Production Corp.
Louie Louie No. 1, 2290' FSL - 710' FWL, Sec. 8, T23N, R9W, NMPM
San Juan County, NM - South Bisti Gallup Test

Dear Mr. LeMay:

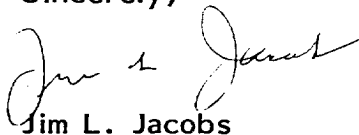
We hereby request approval of an unorthodox location for the subject well. Copies of the well location plat, topographic map and a production map showing offsetting operators are attached for your reference.

An unorthodox location is necessary due to the presence of a deep, very sandy arroyo which has seasonal drainage from uphill badlands.

A copy of this application is being submitted to all offsetting operators by certified mail with a request that they furnish our office with a waiver of objection to be forwarded to you by us.

We request your approval of this location under the provisions of NMOCD Rule 104-F.

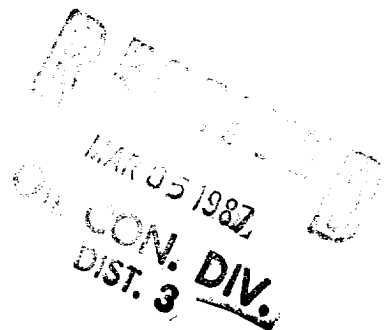
Sincerely,


Jim L. Jacobs

cg

✓cc: NMOCD, Aztec; Attn: Ernie Busch
Offsetting Operators: BLM, BIA, Richard Reese

encs.



OIL CONSERVATION DIVISION

STATE OF NEW MEXICO
ENERGY AND MINERALS DEPARTMENTP. O. BOX 2088
SANTA FE, NEW MEXICO 87501Form C-102
Revised 10-1-78

All distances must be from the outer boundaries of the Section.

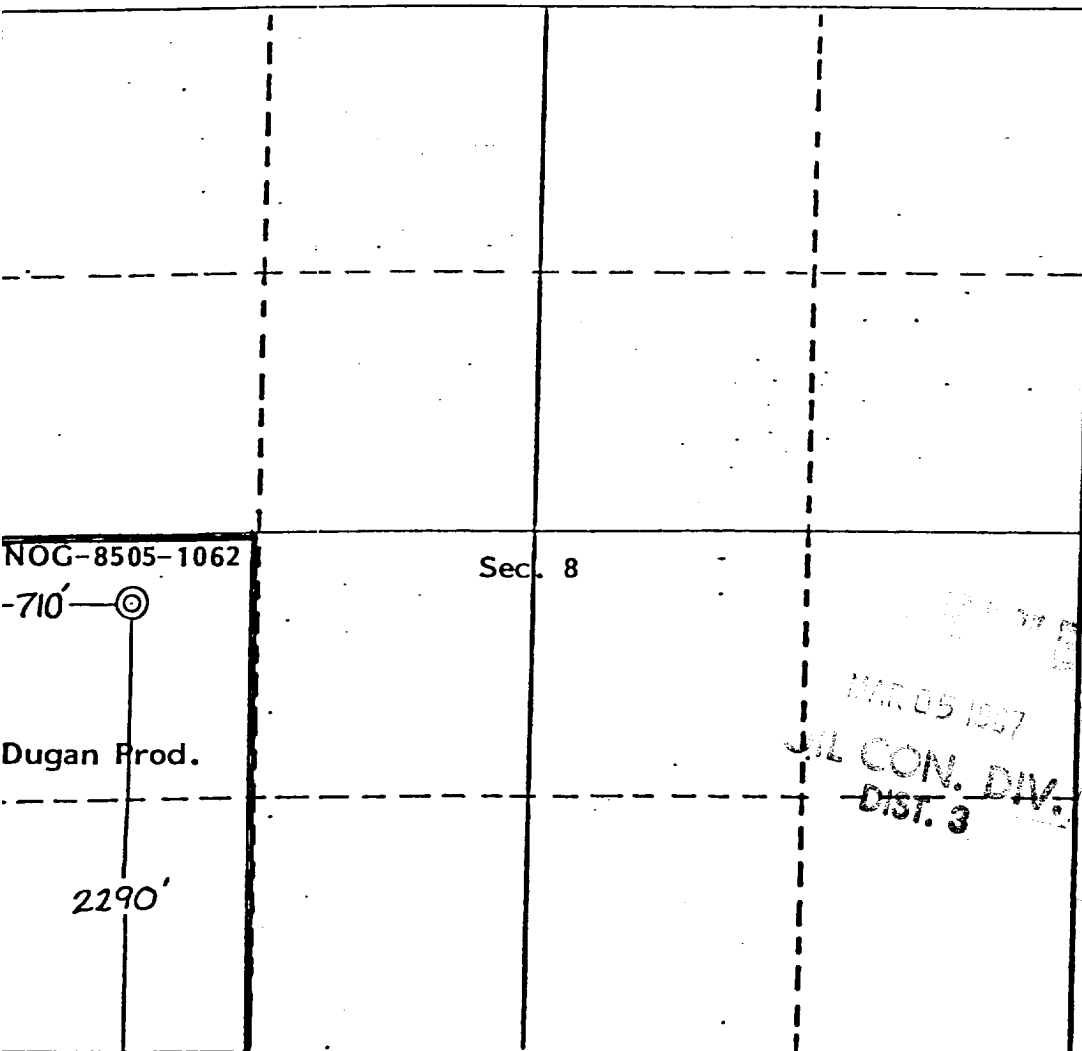
Operator DUGAN PRODUCTION CORP.		Lease Louie Louie		Well No. 1
Unit Letter L	Section 8	Township 23 North	Range 9 West	County San Juan
Actual Footage Location of Well: 2290 feet from the South line and 710 feet from the West line				
Ground Level Elev. 6636'	Producing Formation Gallup	Pool Bisti Gallup South	Dedicated Acreage: 80 Acres	

1. Outline the acreage dedicated to the subject well by colored pencil or hachure marks on the plat below.
2. If more than one lease is dedicated to the well, outline each and identify the ownership thereof (both as to working interest and royalty).
3. If more than one lease of different ownership is dedicated to the well, have the interests of all owners been consolidated by communitization, unitization, force-pooling, etc?

☐ Yes ☐ No If answer is "yes," type of consolidation _____

If answer is "no," list the owners and tract descriptions which have actually been consolidated. (Use reverse side of this form if necessary.) _____

No allowable will be assigned to the well until all interests have been consolidated (by communitization, unitization, forced-pooling, or otherwise) or until a non-standard unit, eliminating such interests, has been approved by the Division.



CERTIFICATION

I hereby certify that the information contained herein is true and complete to the best of my knowledge and belief.

Sherman E. Dugan

Name

Sherman E. Dugan

Position

Geologist

Company

Dugan Production Corp.

Date

9-2-86

I hereby certify that the well location shown on this plat was plotted from field notes of actual surveys made by me or under my supervision, and that the same is true and correct to the best of my knowledge and belief.

Date Surveyed

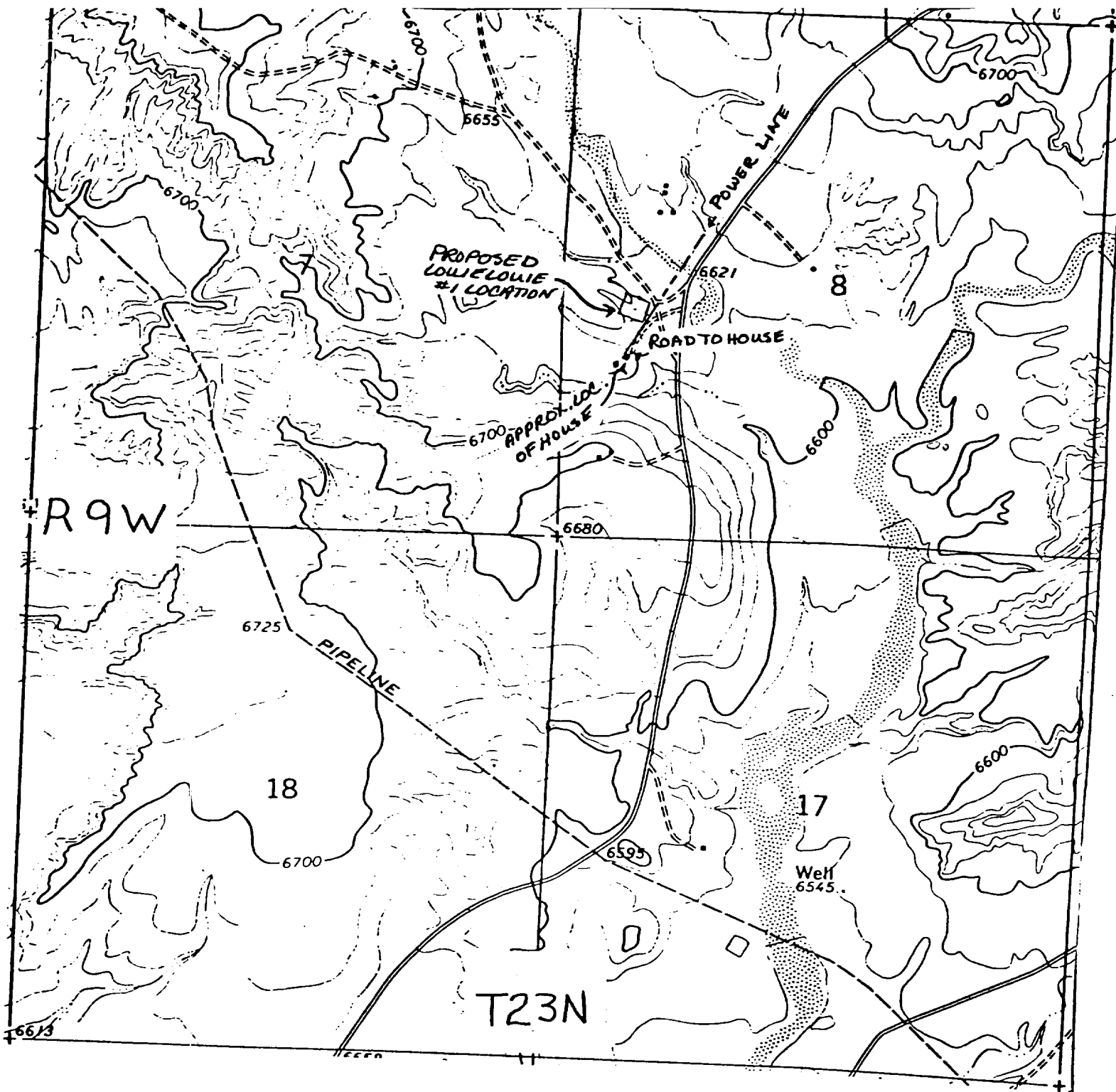
8-18-86

Registered Professional Engineer
and/or Land Surveyor

Thomas A. Dugan

Certificate No.

A1 A1 22012



APPLICATION FOR UNORTHODOX LOCATION

Topographical Map

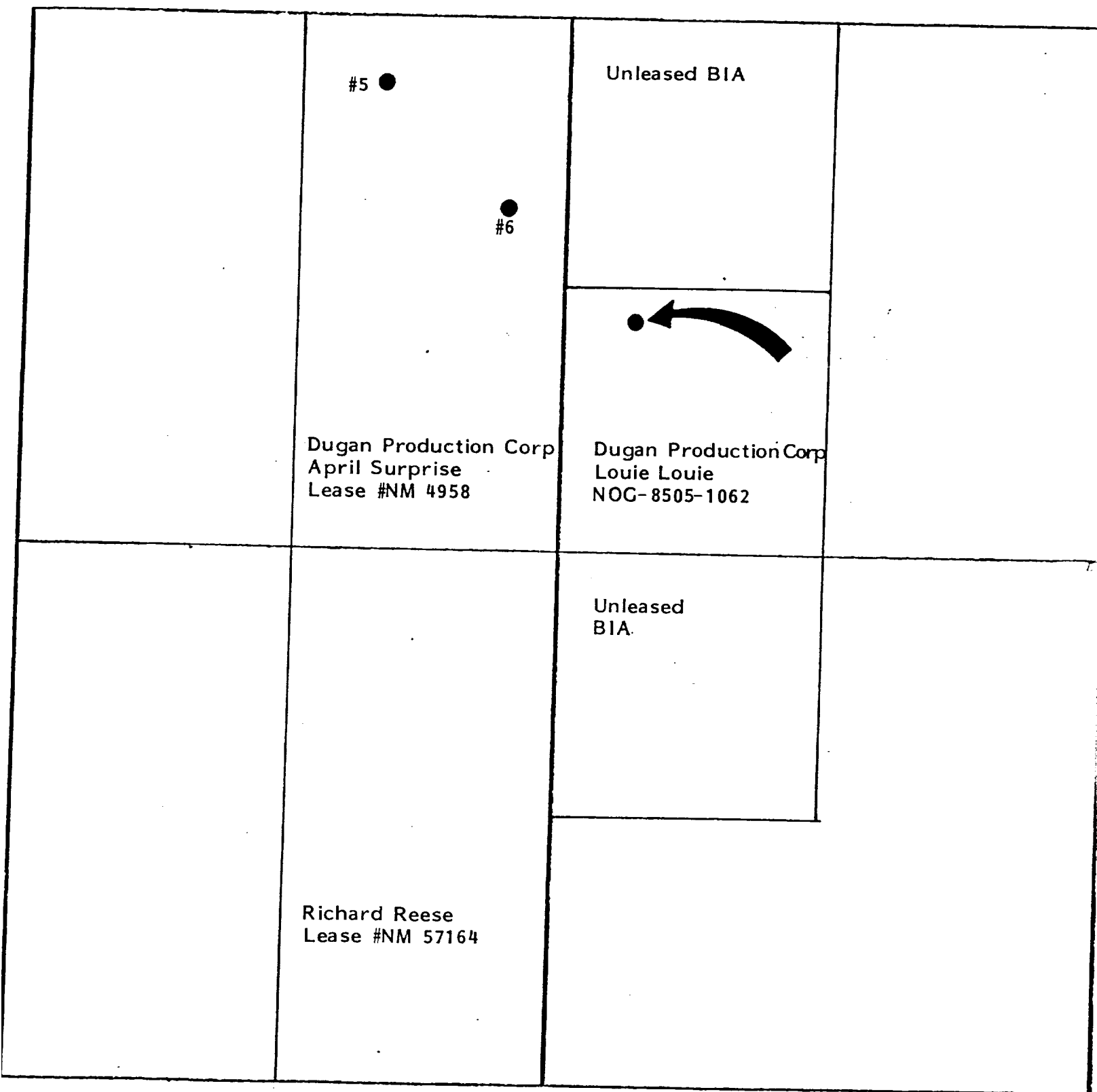
Dugan Production Corp.

Louie Louie #1

2290' FSL - 710' FWL

Sec. 8, T23N, R9W, NMPM

San Juan County, NM



APPLICATION FOR
UNORTHODOX LOCATION
OFFSETTING OPERATORS

DUGAN PRODUCTION CORP.
Louie Louie #1
2290' FSL - 710' FWL
Sec. 8, T23N, R9W, NMPM
San Juan County, NM