

UNITED STATES
DEPARTMENT OF THE INTERIOR
GEOLOGICAL SURVEY

APPLICATION FOR PERMIT TO DRILL, DEEPEN, OR PLUG BACK

1a. TYPE OF WORK

DRILL ☒DEEPEN ☐PLUG BACK ☐

b. TYPE OF WELL

OIL
WELL ☒GAS
WELL ☐OTHER ☐SINGLE
ZONE ☒MULTIPLE
ZONE ☐

2. NAME OF OPERATOR

DUGAN PRODUCTION CORP.

3. ADDRESS OF OPERATOR

P O Box 208, Farmington, NM 87499

4. LOCATION OF WELL (Report location clearly and in accordance with any State requirements.)*
At surface

660' FNL - 660' FEL

At proposed prod. zone

14. DISTANCE IN MILES AND DIRECTION FROM NEAREST TOWN OR POST **FARMINGTON RESOURCE AREA**

approximately 9½ miles southwest of Bisti Trading Post

15. DISTANCE FROM PROPOSED*

LOCATION TO NEAREST
PROPERTY OR LEASE LINE, FT.
(Also to nearest drlg. unit line, if any)

660'

16. NO. OF ACRES IN LEASE

636.72

18. DISTANCE FROM PROPOSED LOCATION*

TO NEAREST WELL, DRILLING, COMPLETED,
OR APPLIED FOR, ON THIS LEASE, FT.

19. PROPOSED DEPTH

4715'

17. NO. OF ACRES ASSIGNED
TO THIS WELL

80 79.72

20. ROTARY OR CABLE TOOLS

Rotary

21. ELEVATIONS (Show whether DF, RKB, etc.)

6568' GL; 6580' RKB

23

This action is subject to technical and
procedural review pursuant to 43 CFR 3165.3
and appeal pursuant to 43 CFR 3165.4.

PROPOSED CASING AND CEMENTING PROGRAM

22. APPROX. DATE WORK WILL START*

ASAP

DRILLING OPERATIONS AUTHORIZED ARE
SUBJECT TO COMPLIANCE WITH ATTACHED
GENERAL REQUIREMENTS

SIZE OF HOLE	SIZE OF CASING	WEIGHT PER FOOT	SETTING DEPTH
12 1/4"	8-5/8"	24#	200'
7-7/8"	4-1/2"	10.5#	4715'

159 cf circ. to surface
1487 cf circ. to surface

Plan to drill a 12-1/4" hole and set 200' of 8-5/8" OD, 24#, J-55 surface casing;
then plan to drill a 7-7/8" hole to total depth with gel-water-mud program to
test Gallup formation. Plan to run IES and CDL logs. If determined productive,
will run 4-1/2", 10.5#, J-55 casing, selectively perforate, frac, clean out after
frac and complete well.

Gas is dedicated.

IN ABOVE SPACE DESCRIBE PROPOSED PROGRAM: If proposal is to deepen or plug back, give data on present productive zone and proposed new productive zone. If proposal is to drill or deepen directionally, give pertinent data on subsurface locations and measured and true vertical depths. Give blowout preventer program, if any.

24.

SIGNED

Sherman E. Dugan
Sherman E. Dugan

TITLE

Geologist

DATE 3-30-87

PERMIT NO.

APPROVAL DATE

APPROVED BY

CONDITIONS OF APPROVAL, IF ANY:

TITLE

NMDCS

APR 17 1987

AREA MANAGER

*See Instructions On Reverse Side

OIL CONSERVATION DIVISION

STATE OF NEW MEXICO
ENERGY AND MINERALS DEPARTMENTP. O. BOX 2088
SANTA FE, NEW MEXICO 87501Form C-102
Revised 10-1-78

All distances must be from the outer boundaries of the Section.

Operator Dugan Production Corporation		Lease Calgary		Well No. 88	
Unit Letter A	Section 6	Township 23 North	Range 10 West	County San Juan	
Actual Footage Location of Well: 660 feet from the North line and 660 feet from the East line					
Ground Level Elev. 6568	Producing Formation Gallup		Pool South Bisti Gallup <i>Ext</i>		Dedicated Acreage: 80 79.72 Acres

1. Outline the acreage dedicated to the subject well by colored pencil or hachure marks on the plat below.
2. If more than one lease is dedicated to the well, outline each and identify the ownership thereof (both as to working interest and royalty).
3. If more than one lease of different ownership is dedicated to the well, have the interests of all owners been consolidated by communitization, unitization, force-pooling, etc?

☐ Yes ☐ No If answer is "yes," type of consolidation _____

If answer is "no," list the owners and tract descriptions which have actually been consolidated. (Use reverse side of this form if necessary.) _____

No allowable will be assigned to the well until all interests have been consolidated (by communitization, unitization, forced-pooling, or otherwise) or until a non-standard unit, eliminating such interests, has been approved by the Division.

RECEIVED

MAR 30 1987

BUREAU OF LAND MANAGEMENT
FARMINGTON RESOURCE AREADugan Prod.
Ls. #NM 32124

SEC 6

OIL FIELD
EDGAR L. RISENHOOVER

CERTIFICATION

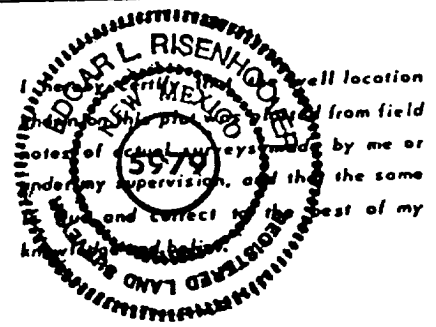
I hereby certify that the information contained herein is true and complete to the best of my knowledge and belief.

Name
Sherman E. Dugan

Position
Geologist

Company
Dugan Production Corp.

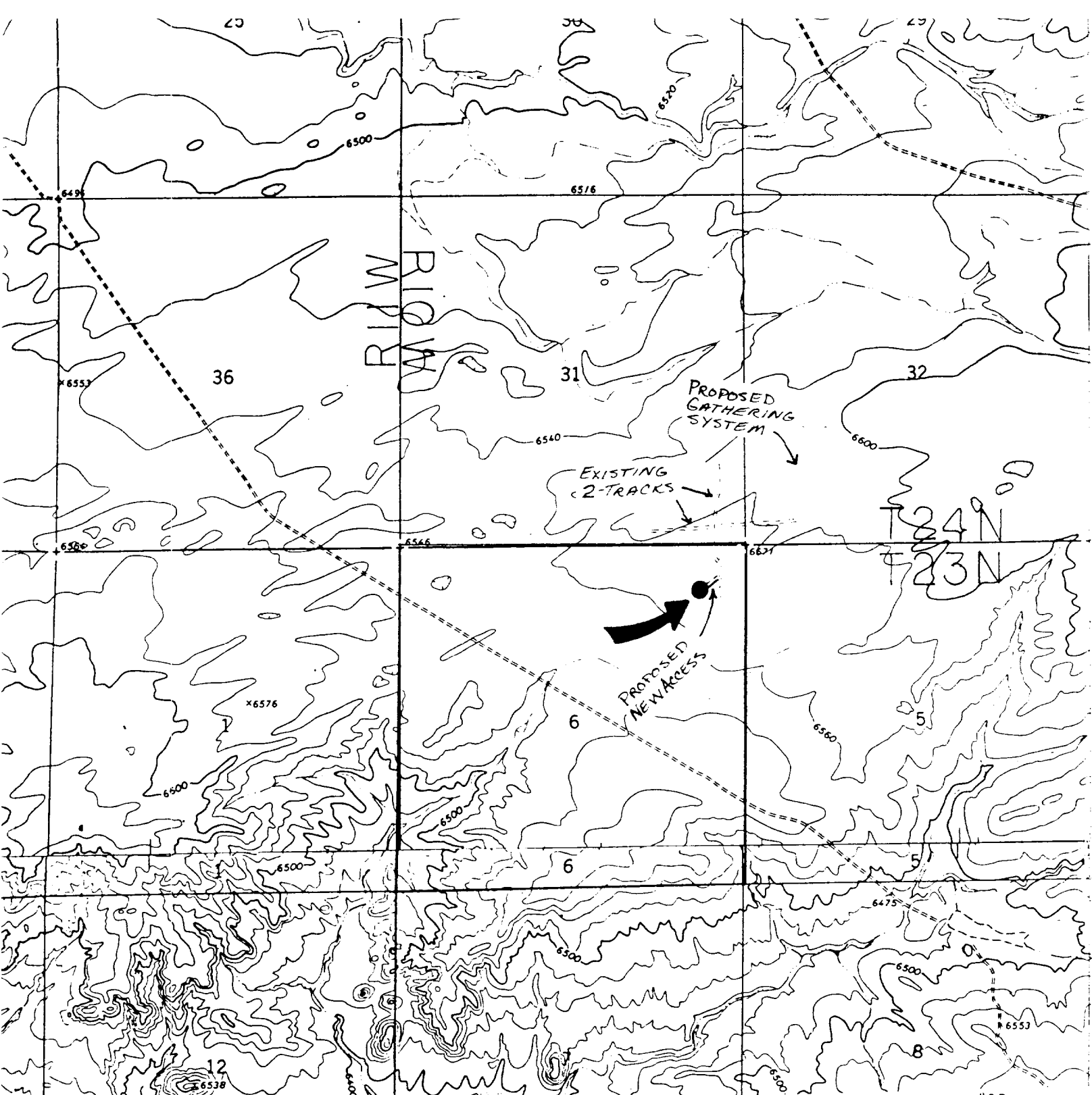
Date
3-30-87



Date Surveyed
March 18, 1987

Registered Professional Engineer
and/or Land Surveyor

Edgar L. Risenhoover
Certificate No. 5979



DUGAN PRODUCTION CORP. - Calgary #88

Existing Roads

Exhibit E

Vicinity of nearest town or reference pt.
 9½ miles southwest of Blanco Trading Post, NM
 (See Exhibit V)

Type of surface dirt

Conditions good

Other _____

Reference map: USGS map Pueblo Bonito, NW
1966 (7.5 minute series, Topographic)

DUGAN PRODUCTION CORP. - Calgary #88

Planned Access Road(s)

Exhibit E

Width 20' Maximum grades 1%
 Drainage design as required
 Cuts & Fills see diagram
 Surfacing material none
☒ Turnouts
☐ Culverts
☐ Gates
☐ Cattleguards
☐ Fence cuts

Access road(s) do do not cross fed Ind land.
 _____ for off-lease access road.