

UNITED STATES
DEPARTMENT OF THE INTERIOR
GEOLOGICAL SURVEY30-045-26890
5. LEASE DESIGNATION AND SERIAL NO.
NM 42059

APPLICATION FOR PERMIT TO DRILL, DEEPEN, OR PLUG BACK

1a. TYPE OF WORK

DRILL ☒DEEPEN ☐PLUG BACK ☐

b. TYPE OF WELL

OIL
WELL ☒GAS
WELL ☐

OTHER

SINGLE
ZONE ☒MULTIPLE
ZONE ☐

2. NAME OF OPERATOR

DUGAN PRODUCTION CORP.

3. ADDRESS OF OPERATOR

P.O. Box 208, Farmington, NM 87499

4. LOCATION OF WELL (Report location clearly and in accordance with any State requirements.)*

At surface

660' FNL & 660' FEL
At proposed prod. zone

6. IF INDIAN, ALLOTTEE OR TRIBE NAME

7. UNIT AGREEMENT NAME

8. FARM OR LEASE NAME

Champ

9. WELL NO.

3

10. FIELD AND POOL, OR WILDCAT

South Bisti Gallup

11. SEC., T., R., M., OR BLK.
AND SURVEY OR AREA

Sec. 5, T23N, R10W, NMP

12. COUNTY OR PARISH

San Juan

13. STATE

NM

14. DISTANCE IN MILES AND DIRECTION FROM NEAREST TOWN OR POST OFFICE*

approx. 9 1/4 miles SW of Blanco Trading Post

15. DISTANCE FROM PROPOSED*

LOCATION TO NEAREST
PROPERTY OR LEASE LINE, FT.
(Also to nearest drilg. unit line, if any)

660'

16. NO. OF ACRES IN LEASE

480 2118.04

17. NO. OF ACRES ASSIGNED
TO THIS WELL

E 80.14

18. DISTANCE FROM PROPOSED LOCATION*
TO NEAREST WELL, DRILLING, COMPLETED,
OR APPLIED FOR, ON THIS LEASE, FT.1882' from
DPC's proposed
Champ #4

19. PROPOSED DEPTH

4755'

20. ROTARY OR CABLE TOOLS

Rotary

21. ELEVATIONS (Show whether DF, RT, GR, etc.)

6593' GL

DRILLING OPERATIONS AUTHORIZED ARE
SUBJECT TO COMPLIANCE WITH ATTACHED

22. APPROX. DATE WORK WILL START*

ASAP

23.

PROPOSED CASING AND CEMENTING PROGRAM

This action is subject to technical and
procedural review pursuant to 43 CFR 3105.5
and appeal pursuant to 43 CFR 3105.4.

SIZE OF HOLE	SIZE OF CASING	WEIGHT PER FOOT	SETTING DEPTH	
12-1/4"	8-5/8"	24#	200'	206 cu. ft. circ. to surface
7-7/8"	4-1/2"	10.5#	4755'	1541 cu. ft. circ. to surface

Plan to drill a 12-1/4" hole and set 200' of 8-5/8" OD, 24#, J-55 surface casing;
then plan to drill a 7-7/8" hole to total depth with gel-water-mud program to test
Gallup formation. Plan to run IES and CDL logs. If determined productive, will
run 4-1/2", 10.5#, J-55 casing, selectively perforate, frac, clean out after frac, and
complete well.

Gas is not dedicated.

IN ABOVE SPACE DESCRIBE PROPOSED PROGRAM: If proposal is to deepen or plug back, give data on present productive zone and proposed new productive
zone. If proposal is to drill or deepen directionally, give pertinent data on subsurface locations and measured and true vertical depths. Give blowout
preventer program, if any.

24.

SIGNED


Jim L. Jacobs

TITLE

Vice-President

DATE

4-19-88

PERMIT NO.

APPROVAL DATE

APPROVED BY

TITLE

CONDITIONS OF APPROVAL, IF ANY:

APPROVED
AS AMENDED

DATE

APR 20 1988

Orig. Sgd. Linda S. C. Rundell

Acting Area Manager

*See Instructions On Reverse Side

OIL CONSERVATION DIVISION

STATE OF NEW MEXICO
ENERGY AND MINERALS DEPARTMENTP. O. BOX 2088
SANTA FE, NEW MEXICO 87501Form C-102
Revised 10-1-78

All distances must be from the outer boundaries of the Section.

Operator Dugan Production Corporation		Lease Champ		Well No. 3	
Unit Letter A	Section 5	Township 23 North	Range 10 West	County San Juan	
Actual Footage Location of Well: 660 feet from the North line and 660 feet from the East line					
Ground Level Elev. 6593	Producing Formation Gallup		Pool South Bisti Gallup		Dedicated Acreage: 80 1/4 Acres

1. Outline the acreage dedicated to the subject well by colored pencil or hachure marks on the plat below.
2. If more than one lease is dedicated to the well, outline each and identify the ownership thereof (both as to working interest and royalty).
3. If more than one lease of different ownership is dedicated to the well, have the interests of all owners been consolidated by communitization, unitization, force-pooling, etc?

☐ Yes ☐ No If answer is "yes," type of consolidation _____

If answer is "no," list the owners and tract descriptions which have actually been consolidated. (Use reverse side of this form if necessary.) _____

No allowable will be assigned to the well until all interests have been consolidated (by communitization, unitization, forced-pooling, or otherwise) or until a non-standard unit, eliminating such interests, has been approved by the Division.

		660'	
		660'	
		Dugan Prod. NM 42059	
SECTION 5			
RECEIVED BIM MAIL ROOM 68 APR 19 PM 2:38 FARMINGTON RESOURCE AREA FARMINGTON, NEW MEXICO			

CERTIFICATION

I hereby certify that the information contained herein is true and complete to the best of my knowledge and belief.

Name

Jim L. Jacobs

Position

Geologist

Company

Dugan Production Corp.

Date

4-19-88

I have surveyed the location shown on this plat was taken from field notes of actual measurement made by me or under my supervision and that the same is true and correct to the best of my knowledge and belief.

Date Surveyed

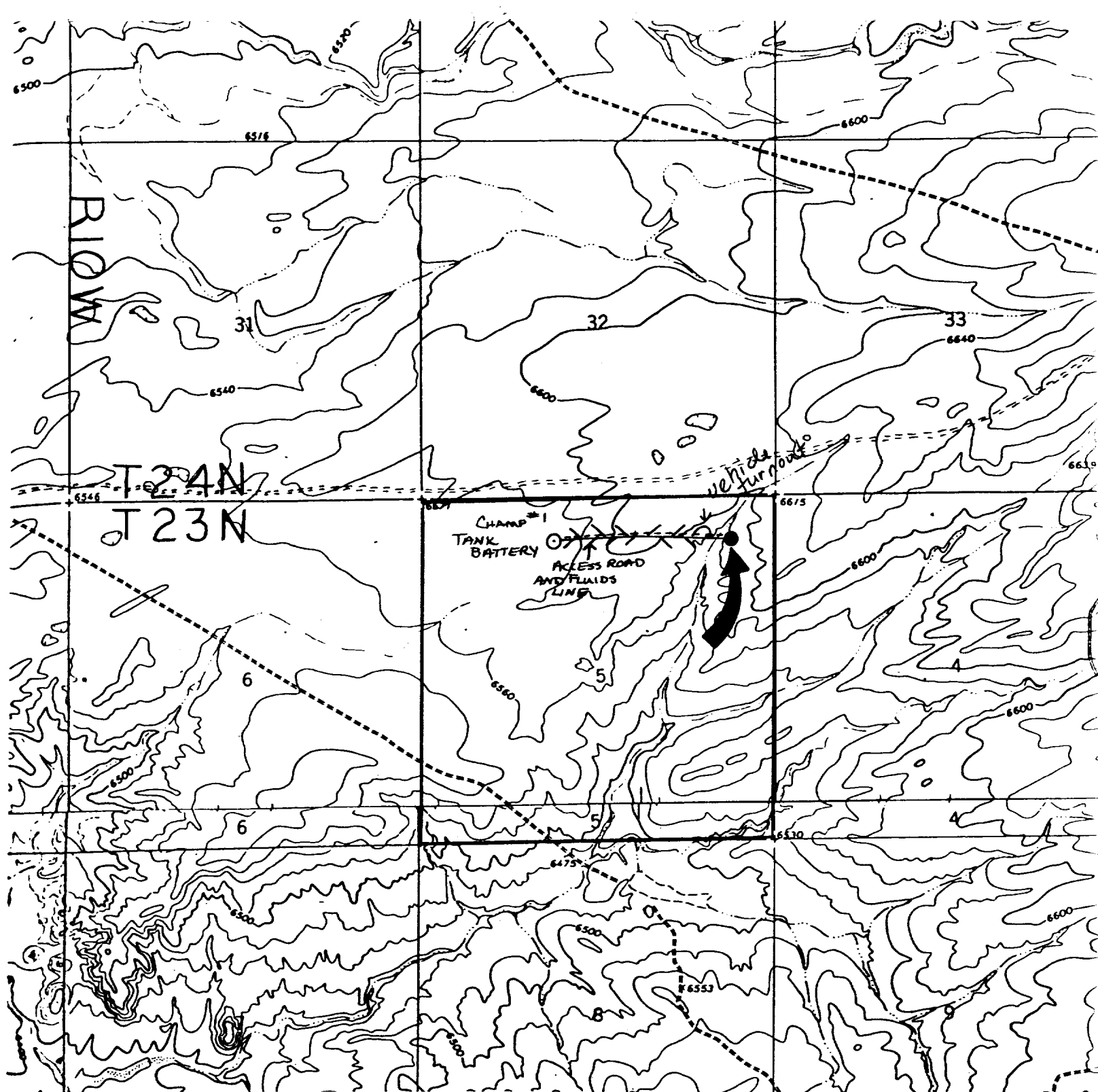
December 11, 1987

Registered Professional Engineer
and/or Land Surveyor

Edgar L. Risenbough

Certificate No. 5979

Edgar L. Risenbough



DUGAN PRODUCTION CORP. - Champ #3

Existing Roads

Exhibit E

Vicinity of nearest town or reference pt.
approx. 9¼ miles SW of Blanco Trading Post, NM

Type of surface dirt

Conditions good

Other _____

Reference map: USGS maps: Huerfano Trading
Post SW 1966; Pueblo Bonito NW, 1966

DUGAN PRODUCTION CORP. - Champ #3

Planned Access Road(s)

Exhibit E

Width 20' Maximum grades 1%

Drainage design as required

Cuts & Fills see diagram

Surfacing material _____

Turnouts

Culverts

Gates

Cattleguards

Fence cuts

Access road(s) do / do not cross Fed / Ind land.