

UNITED STATES
DEPARTMENT OF THE INTERIOR
GEOLOGICAL SURVEY

APPLICATION FOR PERMIT TO DRILL, DEEPEN, OR PLUG BACK

1a. TYPE OF WORK

DRILL ☒DEEPEN ☐PLUG BACK ☐

b. TYPE OF WELL

OIL
WELL ☒GAS
WELL ☐OTHER ☐

2. NAME OF OPERATOR

DUGAN PRODUCTION CORP.

3. ADDRESS OF OPERATOR

P.O. Box 208, Farmington, NM 87499

4. LOCATION OF WELL (Report location clearly and in accordance with any State requirements.)*

At surface

810' FSL & 730' FWL
At proposed prod. zone

14. DISTANCE IN MILES AND DIRECTION FROM NEAREST TOWN OR POST OFFICE*

Approximately 9 miles SW of Blanco Trading Post, NM

15. DISTANCE FROM PROPOSED*

LOCATION TO NEAREST
PROPERTY OR LEASE LINE, FT.
(Also to nearest drlg. unit line, if any)

730'

16. NO. OF ACRES IN LEASE

160

17. NO. OF ACRES ASSIGNED
TO THIS WELL

1180

18. DISTANCE FROM PROPOSED LOCATION*
TO NEAREST WELL, DRILLING, COMPLETED
OR APPLIED FOR, ON THIS LEASE, FT.
approx. 2179'
from DPC's Squaw

19. PROPOSED DEPTH

4640'

20. ROTARY OR CABLE TOOLS

Rotary

21. ELEVATIONS (Show whether DF, RT, GR, etc.)

6547' GL; 6559' KB

22. APPROX. DATE WORK WILL START*

ASAP

PROPOSED CASING AND CEMENTING PROGRAM

SIZE OF HOLE	SIZE OF CASING	WEIGHT PER FOOT	SETTING DEPTH	QUANTITY OF CEMENT
12-1/4"	8-5/8"	24#	200'	159 cubic ft. circ. to surface
7-7/8"	4-1/2"	10.5#	4640'	1465 cubic ft. circ. to surface

Plan to drill a 12-1/4" hole and set 200' of 8-5/8" OD, 24#, J-55 surface casing; then plan to drill a 7-7/8" hole to total depth with gel-water-mud program to test Gallup formation. Plan to run IES and CDL logs. If determined productive, will run 4-1/2", 10.5#, J-55 casing, selectively perforate, frac, clean out after frac and complete well.

Gas is dedicated.

IN ABOVE SPACE DESCRIBE PROPOSED PROGRAM: If proposal is to deepen or plug back, give data on present productive zone and proposed new productive zone. If proposal is to drill or deepen directionally, give pertinent data on subsurface locations and measured and true vertical depths. Give blowout preventer program, if any.

24.

SIGNED

Jim L. Jacobs

TITLE

Geologist

DATE

11-10-87

(This space for Federal or State office use)

PERMIT NO.

APPROVAL DATE

APPROVED

AS AMENDED

APPROVED BY

TITLE

DATE

CONDITIONS OF APPROVAL, IF ANY:

MAY 25 1988

AREA MANAGER

*See Instructions On Reverse Side

RECEIVED
CIVIL ENGINEERING
SERIES 1000
JAN 10 1968

OIL CONSERVATION DIVISION

STATE OF NEW MEXICO
ENERGY AND MINERALS DEPARTMENTP. O. BOX 2088
SANTA FE, NEW MEXICO 87501Form C-102
Revised 10-1-78

All distances must be from the outer boundaries of the Section.


Operator Dugan Production Corporation		Lease Squaw Valley		Well No. 2
Unit Letter M	Section 4	Township 23 North	Range 10 West	County San Juan
Actual Footage Location of Well: 810 feet from the South line and 730 feet from the West line				
Ground Level Elev. 6547	Producing Formation Gallup		Pool South Bisti Gallup Ext.	Dedicated Acreage: 80 Acres

1. Outline the acreage dedicated to the subject well by colored pencil or hatchure marks on the plat below.
2. If more than one lease is dedicated to the well, outline each and identify the ownership thereof (both as to working interest and royalty).
3. If more than one lease of different ownership is dedicated to the well, have the interests of all owners been consolidated by communitization, unitization, force-pooling, etc?

☐ Yes ☐ No If answer is "yes," type of consolidation _____

If answer is "no," list the owners and tract descriptions which have actually been consolidated. (Use reverse side of this form if necessary.) _____

No allowable will be assigned to the well until all interests have been consolidated (by communitization, unitization, forced-pooling, or otherwise) or until a non-standard unit, eliminating such interests, has been approved by the Division.

RECEIVED FACILITY ROOM OCT 16 AM 9:14 FACILITY ROOM OCT 16 AM 9:14		SECTION 4	
Dugan Prod. NOO-C-14-20- 7310 730'  810'		RECEIVED MAY 27 1988 OIL CON. DIV. DIST. 3	

CERTIFICATION

I hereby certify that the information contained herein is true and complete to the best of my knowledge and belief.

Name

Jim L. Jacobs

Position

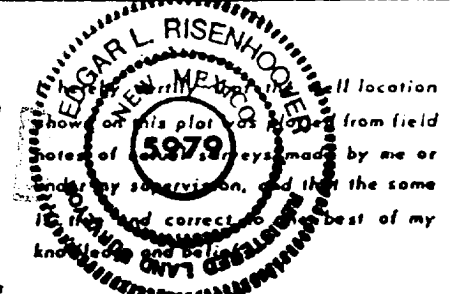
Geologist

Company

Dugan Production Corp.

Date

11-10-87



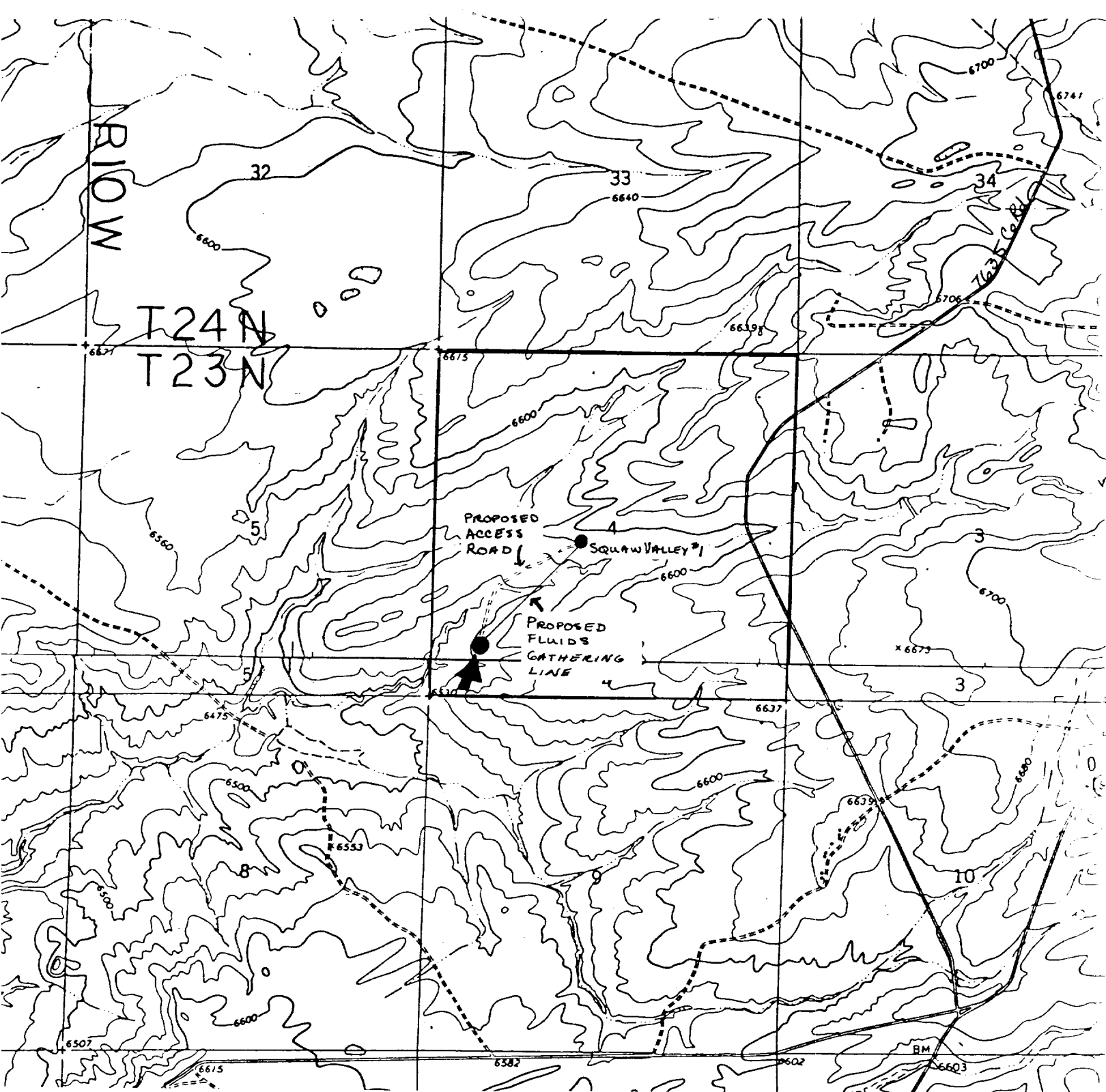
Date Surveyed

October 7, 1987

Registered Professional Engineer
and/or Land Surveyor

Edgar L. Risenhoover

Certificate No. 5979



DUGAN PRODUCTION CORP. - Squaw Valley #2
Existing Roads Exhibit E

Vicinity of nearest town or reference pt.
approx. 9 miles SW of Blanco Trading Post, NM

Type of surface dirt

Conditions good

Other _____

Reference map: USGS map: Huerfano Trading Post SW, 1966 (7.5 min series) and Pueblo Bonito NW, 1966 (7.5 min series)

DUGAN PRODUCTION CORP. - Squaw Valley #2
Planned Access Road(s) Exhibit E

Width 20' Maximum grades 2%

Drainage design as required

Cuts & Fills see diagram

Surfacing material none

☒ Turnouts

☐ Culverts

☐ Gates

☐ Cattleguards

☐ Fence cuts

Access road(s) (do) do not cross Fed (Ind) land.
 === Access Road