

5 BLM  
1 FileUNITED STATES  
DEPARTMENT OF THE INTERIOR  
GEOLOGICAL SURVEY30-045-28551  
LEASE DESIGNATION AND SERIAL NO.

NM 50999

6. IF INDIAN, ALLOTTEE OR TRIBE NAME

## APPLICATION FOR PERMIT TO DRILL, DEEPEN, OR PLUG BACK

1a. TYPE OF WORK

DRILL ☒DEEPEN ☐PLUG BACK ☐

b. TYPE OF WELL

OIL  
WELL ☐GAS  
WELL ☒

OTHER

SINGLE  
ZONE ☐MULTIPLE  
ZONE ☐

2. NAME OF OPERATOR

DUGAN PRODUCTION CORP. 6515

3. ADDRESS OF OPERATOR

P.O. Box 420, Farmington, NM 87499

4. LOCATION OF WELL (Report location clearly and in accordance with any State requirements.)

At surface

1850' FSL &amp; 1850' FWL

At proposed prod. zone

14. DISTANCE IN MILES AND DIRECTION FROM NEAREST TOWN OR POST OFFICE\*

approx. 3 miles SE of 44 Store, NM

15. DISTANCE FROM PROPOSED\*

LOCATION TO NEAREST  
PROPERTY OR LEASE LINE, FT.  
(Also to nearest drlg. unit line, if any)

1850'

16. NO. OF ACRES IN LEASE

1680

17. NO. OF ACRES ASSIGNED  
TO THIS WELL

160

18. DISTANCE FROM PROPOSED LOCATION\*  
TO NEAREST WELL DRILLING, COMPLETED,  
OR APPLIED FOR, ON THIS LEASE, FT.

----

19. PROPOSED DEPTH

1930'

20. ROTARY OR CABLE TOOLS

Rotary

21. ELEVATIONS (Show whether DF, RT, GR, etc.)

6864' GL This action is subject to technical and

22. APPROX. DATE WORK WILL START\*

ASAP

23. PROPOSED CASING AND CEMENTING PROGRAM  
and appeal pursuant to 45 CFR 2.100.4.

SIZE OF HOLE	SIZE OF CASING	WEIGHT PER FOOT	SETTING DEPTH	QUANTITY OF CEMENT
9-3/4"	7"	20#	100' 90'	40 sx (48 cf) circ. to surface
6-1/4"	4 1/2"	10.5#	1930'	280 sx (431 cf) circ. to surface

Plan to drill a 9-3/4" hole and set 100' of 7" OD, 20#, J-55 surface casing; then plan to drill a 6-1/4" hole to total depth with gel-water-mud program to test the Chacra formation. Plan to run IES and COL logs. If determined productive, will run 4 1/2", 10.5#, J-55 casing, selectively perforate, frac, clean out after frac and complete well.

RECEIVED

MAY 29 1991

OIL CON. DIV.  
DIST. 3

IN ABOVE SPACE DESCRIBE PROPOSED PROGRAM: If proposed to ~~drill~~, give data on present productive zone and proposed new productive zone. If proposal is to drill or deepen directionally, give pertinent data on subsurface locations and measured and true vertical depths. Give blowout preventer program, if any.

24.

SIGNED

Sherman E. Dugan

TITLE Vice-President

DATE 4-24-91

(This space for federal or State office use)

PERMIT NO.

APPROVAL DATE

APPROVED  
AS AMENDED

APPROVED BY

TITLE

CONDITIONS OF APPROVAL, IF ANY:

MAY 24 1991

AREA MANAGER

\*See Instructions On Reverse Side

Submit to Appropriate  
District Office  
State Lease - 4 copies  
Fee Lease - 3 copies

State of New Mexico  
Energy, Minerals and Natural Resources Department

Form C-102  
Revised 1-1-89

OIL CONSERVATION DIVISION

P.O. Box 2088  
Santa Fe, New Mexico 87504-2088

RECEIVED  
BLM

91 MAY -2 PM 3:49

DISTRICT I  
P.O. Box 1980, Hobbs, NM 88240

DISTRICT II  
P.O. Drawer DD, Artesia, NM 88210

DISTRICT III  
1000 Rio Brazos Rd., Aztec, NM 87410

WELL LOCATION AND ACREAGE DEDICATION PLAT

All Distances must be from the outer boundaries of the section

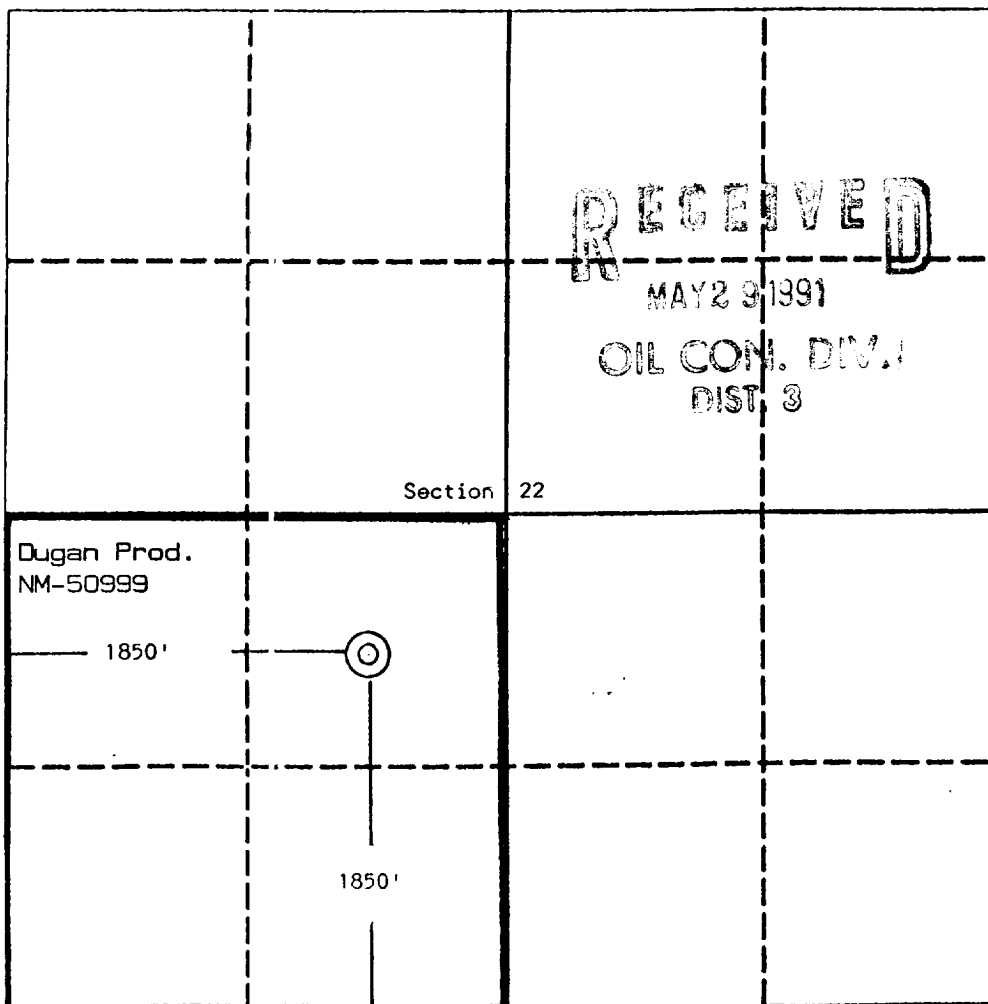
010 FARMINGTON, N.M.

Operator Dugan Production Corporation			Lease The Bear		Well No. 1
Unit Letter K	Section 22	Township 23 North	Range 8 West	County San Juan	NMPM
Actual Footage Location of Well: 1850 feet from the South line and 1850 feet from the West line					
Ground level Elev. 6864	Producing Formation Chacra		Pool Wildcat		Dedicated Acreage: 160 Acres

1. Outline the acreage dedicated to the subject well by colored pencil or hatchure marks on the plat below.
2. If more than one lease is dedicated to the well, outline each and identify the ownership thereof (both as to working interest and royalty).
3. If more than one lease of different ownership is dedicated to the well, have the interest of all owners been consolidated by communalization, unitization, force-pooling, etc.?  
☐ Yes ☐ No If answer is "yes" type of consolidation \_\_\_\_\_

If answer is "no" list the owners and tract descriptions which have actually been consolidated. (Use reverse side of this form if necessary).

No allowable will be assigned to the well until all interests have been consolidated (by communalization, unitization, forced-pooling, or otherwise) or until a non-standard unit, eliminating such interest, has been approved by the Division.



RECEIVED  
MAY 29 1991  
OIL CON. DIV.  
DIST. 3

OPERATOR CERTIFICATION

I hereby certify that the information contained herein is true and complete to the best of my knowledge and belief.

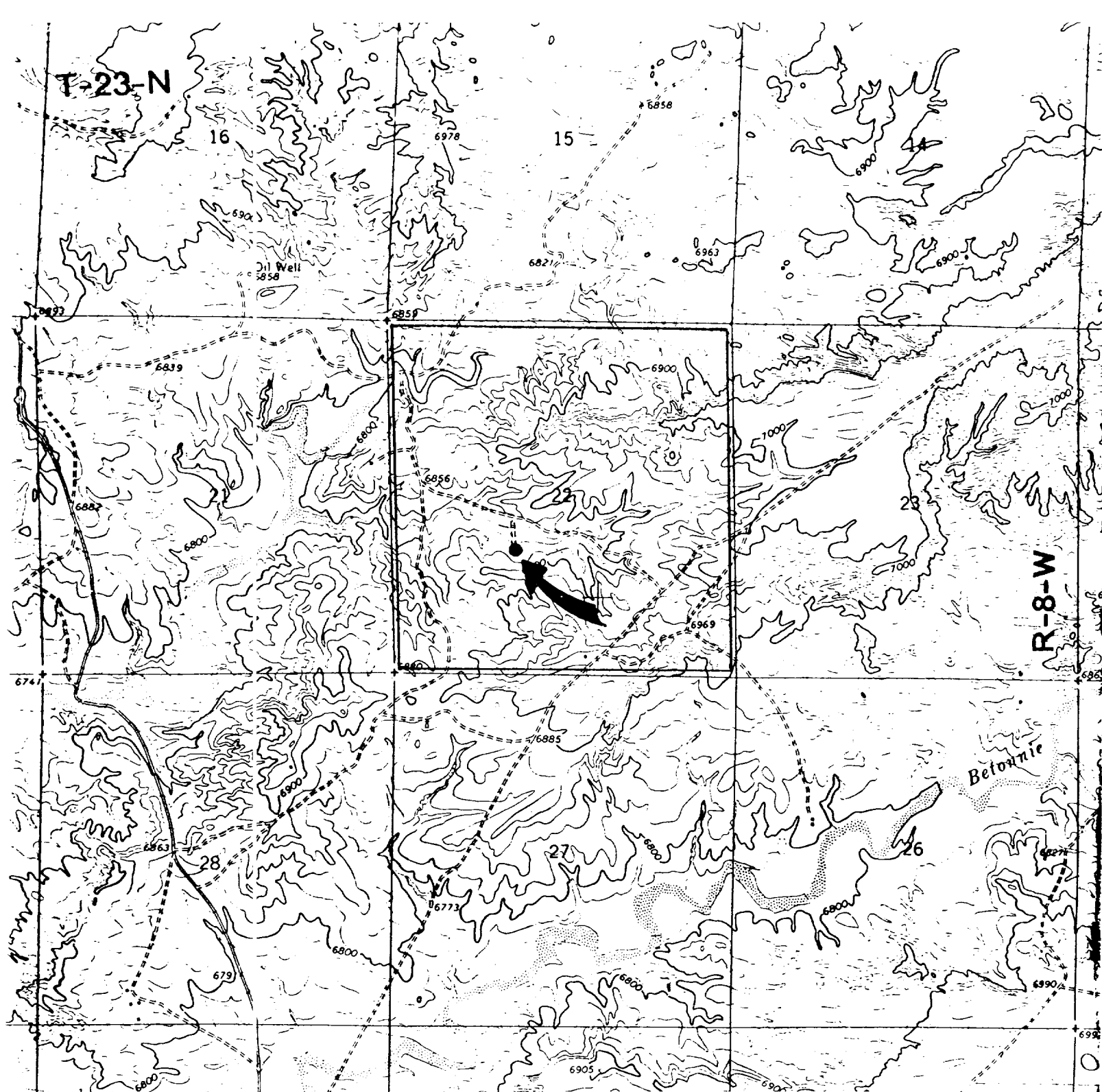
Signature  
*Sherman E. Dugan*  
Printed Name  
Sherman E. Dugan  
Position  
Vice-President  
Company  
Dugan Production Corp.  
Date  
4-24-91

SURVEYOR CERTIFICATION

I hereby certify that the well location shown on this plat was plotted from field notes of actual surveys made by me or under my supervision, and that the same is true and correct to the best of my knowledge and belief.

Date Surveyed  
March 26, 1991  
Signature & Seal of Professional Surveyor  
*Edgar L. Risenhoover*  
Edgar L. Risenhoover, P.  
Certificate No. 5579  
NEW MEXICO  
REGISTERED LAND SURVEYOR

0 330 660 990 1320 1650 1980 2310 2640 2000 1500 1000 500 0



### Existing Roads

### Exhibit E

Vicinity of nearest town or reference pt.  
Approx. 3 miles SE of 44 Store, NM

Type of surface dirt

Conditions good

Other \_\_\_\_\_

Reference map: USGS map

Lybrook NW, N. Mex. 1966

### Planned Access Road(s)

### Exhibit E

Width 15' Maximum grades 4%

Drainage design as required

Cuts & Fills see diagram

Surfacing material none

↳ Turnouts

↳ Culverts

↳ Gates

↳ Cattleguards

↳ Fence cuts

Access road(s) do do not cross Fed Ind land.

DUGAN PRODUCTION CORP. - The Bear #1