

(November 1983)
(formerly -331C)

UNITED STATES
DEPARTMENT OF THE INTERIOR

BUREAU OF LAND MANAGEMENT

APPLICATION FOR PERMIT TO DRILL, DEEPEN, OR PLUG BACK

1a. TYPE OF WORK

DRILL ☒

DEEPEN ☐

PLUG BACK ☐

b. TYPE OF WELL

OIL
WELL ☒

GAS
WELL ☐

OTHER

SINGLE
ZONE ☒

MULTIPLE
ZONE ☐

2. NAME OF OPERATOR

Yates Petroleum Corporation

(505) 748-1471

3. ADDRESS OF OPERATOR

105 South 4th St., Artesia, NM 88210

4. LOCATION OF WELL (Report location clearly and in accordance with any State requirements.)

At surface

760' FSL & 2080' FWL

At proposed prod. zone

Same

14. DISTANCE IN MILES AND DIRECTION FROM NEAREST TOWN OR POST OFFICE*

8 air miles SE of Nageezi, NM

15. DISTANCE FROM PROPOSED*

LOCATION TO NEAREST
PROPERTY OR LEASE LINE, FT.
(Also to nearest drlg. unit line, if any)

760'

16. NO. OF ACRES IN LEASE

2560

17. NO. OF ACRES ASSIGNED
TO THIS WELL

40

18. DISTANCE FROM PROPOSED LOCATION*

TO NEAREST WELL, DRILLING, COMPLETED,
OR APPLIED FOR, ON THIS LEASE, FT.

N/A

19. PROPOSED DEPTH

5,150'

20. ROTARY OR CABLE TOOLS

Rotary

21. ELEVATIONS (Show whether DF, RT, GR, etc.)

This action is subject to technical and
procedural review pursuant to 43 CFR 3165.4

6,920' ungraded ground

22. APPROX. DATE WORK WILL START*

Aug. 28, 1993

23. and appeal pursuant to 43 CFR 3165.4.

PROPOSED CASING AND CEMENTING PROGRAM

DRILLING OPERATIONS AUTHORIZED ARE

SIZE OF HOLE	SIZE OF CASING	WEIGHT PER FOOT	SETTING DEPTH	QUANTITY OF CEMENT
12-1/4"	8-5/8"	24# (K-55)	250'	~100 sx and to surface
7-7/8"	4-1/2"	10.5# (K-55)	5,150'	~775 sx and to surface

APD is also serving as a road right-of-way amendment application. Wish to amend BLM right-of-way NM-80816 (originally issued for access to Yates Petroleum Corporation's Henry AGC Federal #1 well; NWNW 29-23n-7w; O&G lease NM-36943). Amendment is for proposed 25' wide by ~300' long road off-lease in NENW 2-22n-8w and 25' wide by ~600' long road on-lease in SESW 35-23n-8w. Total right-of-way length is ~900'. All in San Juan County, NM

AUG 26 1993

cc: BLM (3), OGCC (2)

IN ABOVE SPACE DESCRIBE PROPOSED PROGRAM: If proposal is to deepen or plug back, give data on present productive zone and proposed new productive zone. If proposal is to drill or deepen directionally, give pertinent data on subsurface locations and measured and true vertical depths. Give blowout preventer program, if any.

SIGNED

TITLE

Consultant

DATE

8-2-93

(This space for Federal or State office use)

PERMIT NO.

APPROVAL DATE

APPROVED
AS AMENDED

APPROVED BY

TITLE

DATE

AUG 24 1993

CONDITIONS OF APPROVAL, IF ANY:

DISTRICT MANAGER

*See Instructions On Reverse Side

Title 18 U.S.C. Section 1001, makes it a crime for any person knowingly and willfully to make to any department or agency of the United States any false, fictitious or fraudulent statements or representations as to any matter within its jurisdiction.

OIL CONSERVATION DIVISION

P.O. Box 2088

Santa Fe, New Mexico 87504-2088

RECEIVED
BLM

SEP 06 -4 PM 3:56

070 HARRINGTON, NM

DISTRICT I
P.O. Box 1980, Hobbs, NM 88240

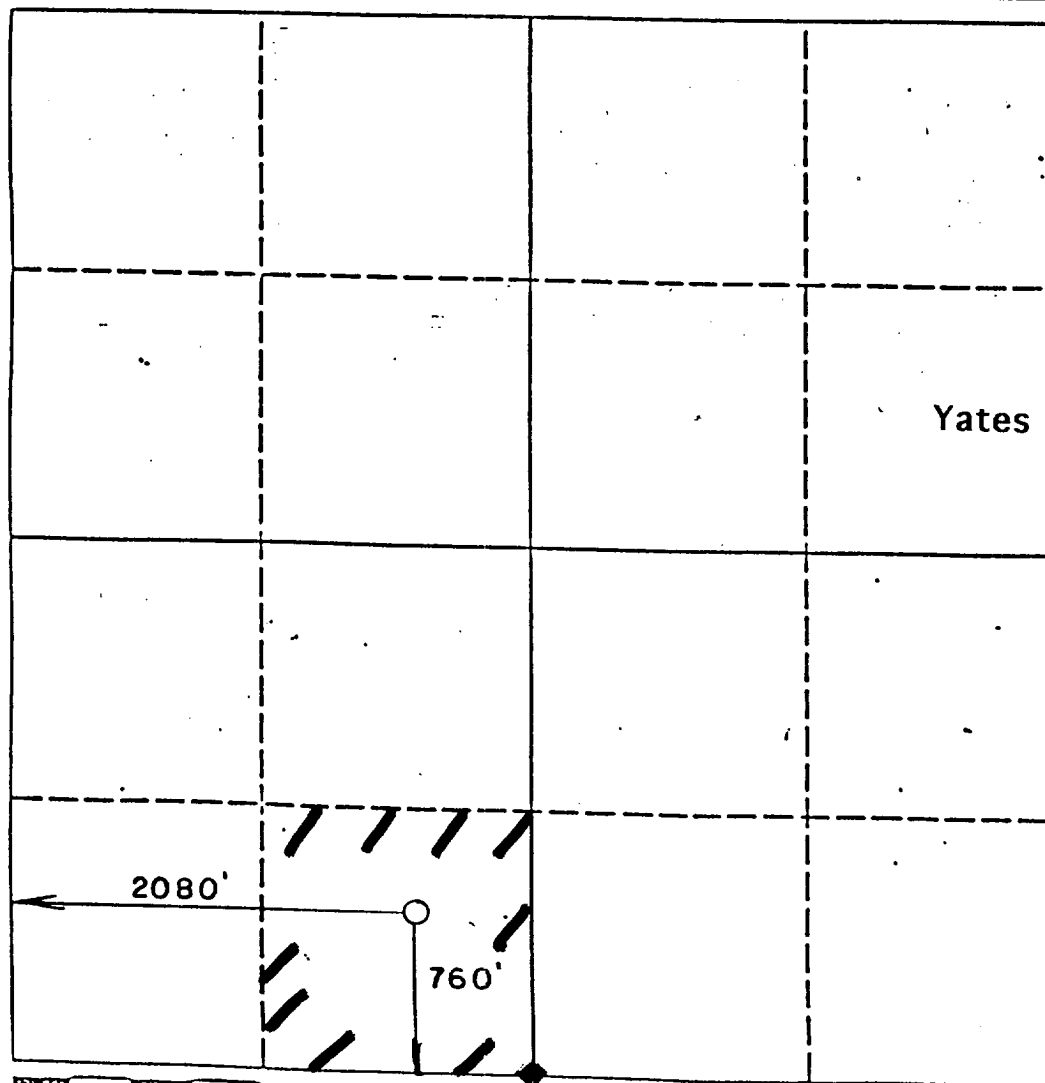
DISTRICT II
P.O. Drawer DD, Artesia, NM 88210

DISTRICT III
1000 Rio Brazos Rd., Aztec, NM 87410

WELL LOCATION AND ACREAGE DEDICATION PLAT

All Distances must be from the outer boundaries of the section

Operator YATES PETROLEUM CORP.		Lease ALAMITO "ANR" FEDERAL		Well # 1
Unit Letter N	Section 35	Township 23 N.	Range 8 W.	County SAN JUAN
Actual Footage Location of Well: 760 feet from the SOUTH line and 2080 feet from the WEST				
Ground level Elev. 6920'	Producing Formation Gallup	Pool Alamito-Gallup	Dedicated Acreage: 40 Acres	
<p>1. Outline the acreage dedicated to the subject well by colored pencil or hatchure marks on the plat below.</p> <p>2. If more than one lease is dedicated to the well, outline each and identify the ownership thereof (both as to working interest and royalty).</p> <p>3. If more than one lease of different ownership is dedicated to the well, have the interest of all owners been consolidated by communitization, unitization, force-pooling, etc.? <input type="checkbox"/> Yes <input type="checkbox"/> No If answer is "yes" type of consolidation _____</p> <p>If answer is "no" list the owners and tract descriptions which have actually been consolidated. (Use reverse side of this form if necessary.) _____</p> <p>No allowable will be assigned to the well until all interests have been consolidated (by communitization, unitization, forced-pooling, or otherwise) or until a non-standard unit, eliminating such interest, has been approved by the Division.</p>				

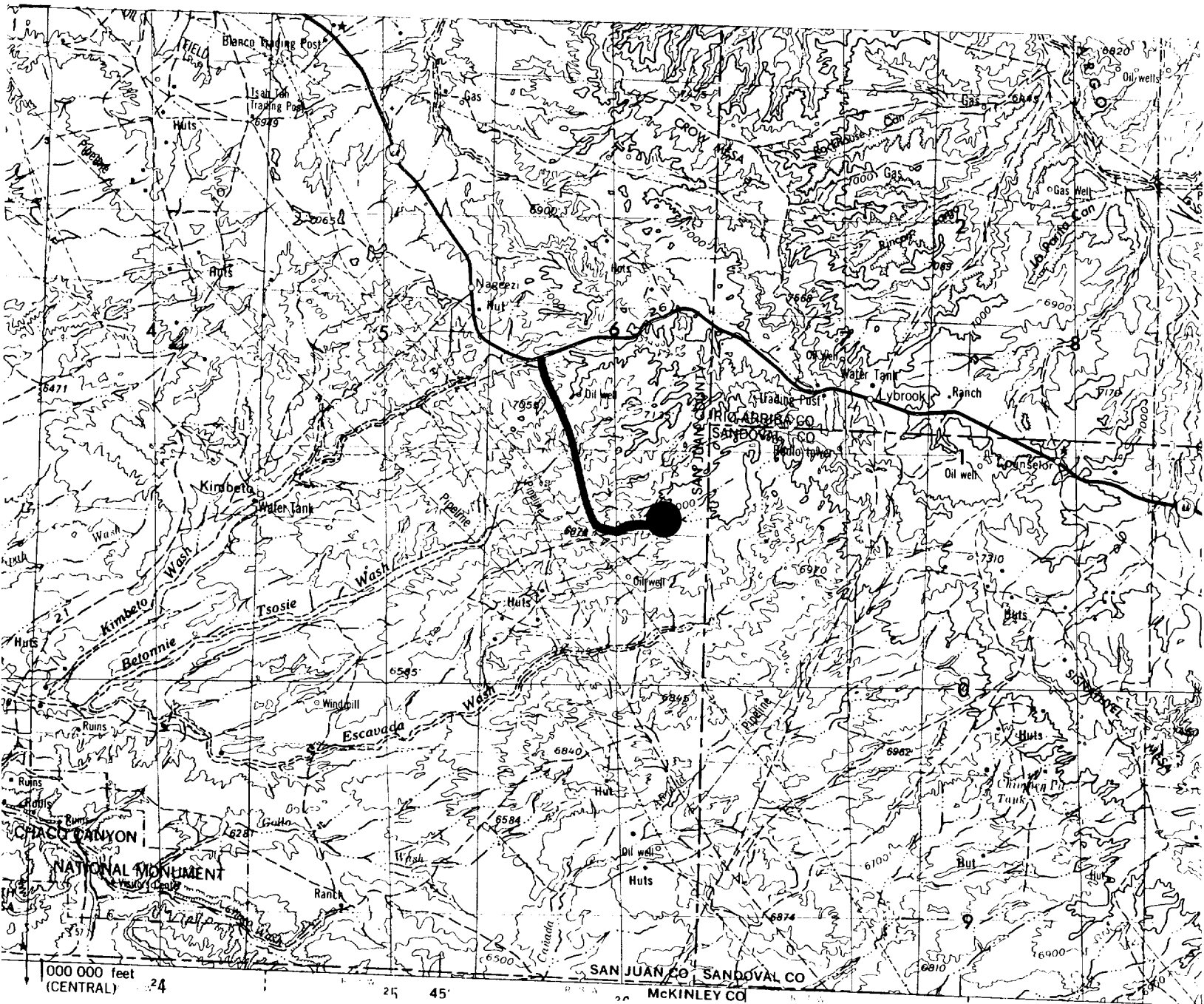


OPERATOR CERTIFICATION	
I hereby certify that the information contained herein is true and complete to the best of my knowledge and belief.	
Signature	<i>Brian Wood</i>
Printed Name	Brian Wood
Position	Consultant
Company	Petroleum Corporation
Date	August 2, 1993

SURVEYOR CERTIFICATION	
I hereby certify that the well location shown on this plat was plotted from field notes of actual surveys made by me or under my supervision, and that the same is true and correct to the best of my knowledge and belief.	
Date Surveyed	30 July 93
Signature	<i>[Signature]</i>
Professional Seal	REGISTERED LAND SURVEYOR
Certificate No.	6897

Yates Petroleum Corporation
 Alamito ANR Federal #1
 760' FSL & 2080' FWL
 Sec. 35, T. 23 N., R. 8 W.
 San Juan County, NM

PAGE 11



Wellsite: ●

Access: