

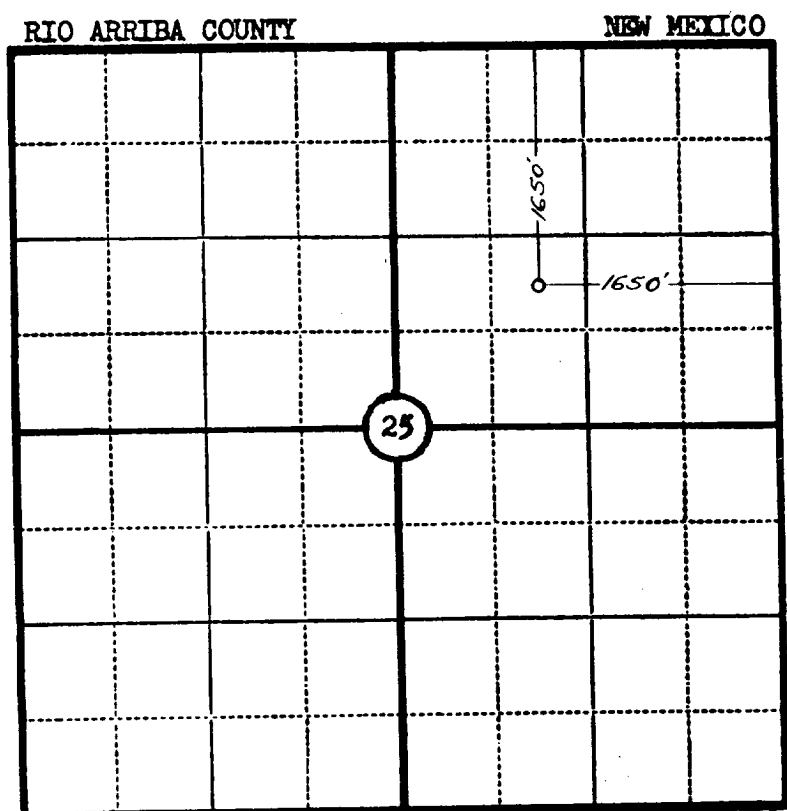
Company KEN BLACKFORD

Lease 24 - 5 JICARELLA APACHE Well No. 1 - 25

Sec. 25, T. 24 N., R. 5 W., N.M.P.M.

Location 1650' FROM THE NORTH LINE AND 1650' FROM THE EAST LINE.

Elevation 6725.6 UNGRADED GROUND.



Scale—4 inches equal 1 mile.

This is to certify that the above plat was prepared from field notes of actual surveys made by me or under my supervision and that the same are true and correct to the best of my knowledge and belief.

Seal

*James P. Loose*

Registered Land Surveyor.

James P. Loose

N. Mex. Reg. No. 1463

Surveyed 30 July, 1955

SAN JUAN ENGINEERING COMPANY, FARMINGTON, N. M.