

| | | |
|---------------------------|---|---|
| NUMBER OF COPIES RECEIVED | | 5 |
| DISTRIBUTION | | |
| SANTA FE | 1 | |
| FILE | 1 | |
| U.S.S. | 2 | |
| LAND OFFICE | | |
| TRANSPORTER | | |
| OIL | | |
| GAS | | |
| PRODUCTION OFFICE | | |
| OPERATOR | 1 | |

NEW MEXICO OIL CONSERVATION COMMISSION
WELL LOCATION AND ACREAGE DEDICATION PLAT
 SEE INSTRUCTIONS FOR COMPLETING THIS FORM ON THE REVERSE SIDE

FORM C-128
Revised 5/1/57

SECTION A

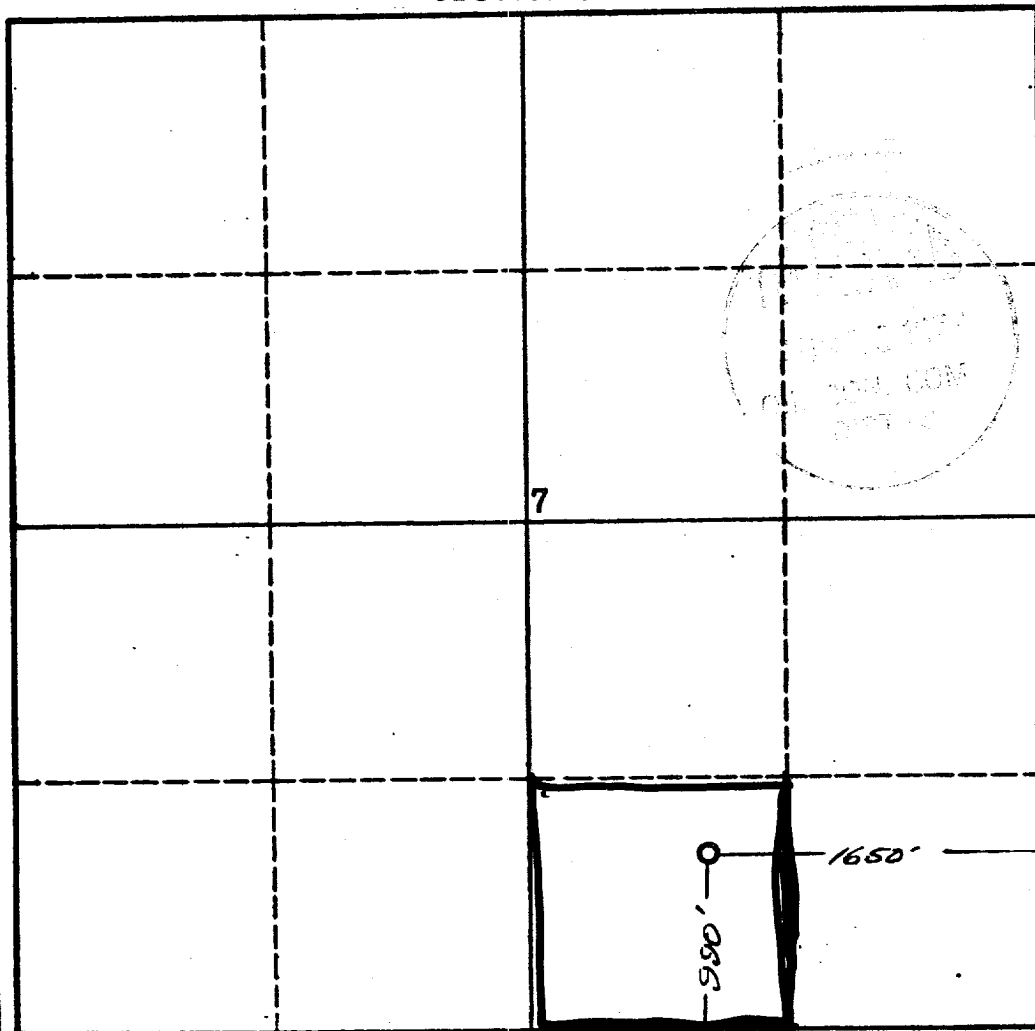
| | | | | | |
|-------------------------------------------------------------------------------------------------------------------------------|------------------------------------------|-----------------------------|----------------------------|------------------------------------------------------|------------------------|
| Operator J. GREGORY MERRION | | | Lease EDNA | | Well No. # 2 |
| Unit Letter 0 | Section 7 | Township 24 NORTH | Range 6 WEST | County RIO ARRIBA | |
| Actual Footage Location of Well: 990 feet from the SOUTH line and 1650 feet from the EAST line | | | | | |
| Ground Level Elev. 6876.0 | Producing Formation MESA VERDE | | Pool DEVILS FORK | Dedicated Acreage: 40 160 Acres | |

Ref: GLO plat dated 4 November 1882

1. Is the Operator the only owner in the dedicated acreage outlined on the plat below? YES ☒ NO ☐ ("Owner" means the person who has the right to drill into and to produce from any pool and to appropriate the production either for himself or for himself and another. (65-3-29 (e) NMSA 1935 Comp.)
2. If the answer to question one is "no," have the interests of all the owners been consolidated by communitization agreement or otherwise? YES ☐ NO ☐ . If answer is "yes," Type of Consolidation _____
3. If the answer to question two is "no," list all the owners and their respective interests below: _____

| | |
|------------------------------------|---------------------------------------------------------------------------------------------|
| Owner J. GREGORY MERRION | Land Description SE/4, SEC. 7, T24N, R6W, RIO ARRIBA COUNTY, NEW MEXICO |
|------------------------------------|---------------------------------------------------------------------------------------------|

SECTION B



CERTIFICATION

I hereby certify that the information in SECTION A above is true and complete to the best of my knowledge and belief.

| |
|--------------------------------------|
| Name J. GREGORY MERRION |
| Position OPERATOR |
| Company J. GREGORY MERRION |
| Date 8-15-77 |

I hereby certify that the well location shown on the plat in SECTION B was plotted from field notes of actual surveys made by me or under my supervision, and that the same is true and correct to the best of my knowledge and belief.

| |
|--------------------------------------------------------------------------------------------------|
| Date Surveyed 3 April 1961 |
| Registered Professional Engineer and/or Land Surveyor James P. Leese James P. Leese |
| Certificate No. 1463 |

0 330 660 990 1320 1650 1980 2310 2640 2000 1500 1000 500