

UNITED STATES
DEPARTMENT OF THE INTERIOR
BUREAU OF LAND MANAGEMENT

APPLICATION FOR PERMIT TO DRILL, DEEPEN, OR PLUG BACK

RECEIVED
NOV 23 1990
OIL CON. DIV.
DIST. 3

1a. TYPE OF WORK PLUG BACK	5. LEASE NUMBER Jicarilla Apache Tribal Contract #126
1b. TYPE OF WELL GAS	6. IF INDIAN, ALL. OR TRIBE NAME Jicarilla Apache
2. OPERATOR Meridian Oil Inc.	7. UNIT AGREEMENT NAME
3. ADDRESS & PHONE NO. OF OPERATOR P.O. BOX 4289 FARMINGTON, NM 87499 (505) 326-9700	8. FARM OR LEASE NAME Jicarilla 126 S
4. LOCATION OF WELL 1850' FSL, 990' FEL	9. WELL NO. #13
14. DISTANCE IN MILES FROM NEAREST TOWN	10. FIELD, POOL, OR WILDCAT BASIN FRUITLAND COAL
15. DISTANCE FROM PROPOSED LOCATION TO NEAREST PROPERTY OR LEASE LINE.	11. SEC. T. R. M OR BLK. Section 12, T24N, R04W
16. ACRES IN LEASE	12. COUNTY Rio Arriba
17. ACRES ASSIGNED TO WELL 320.00	13. STATE NM
18. DISTANCE FROM PROPOSED LOCATION TO NEAREST WELL DR. COMPL., OR APPLIED FOR ON THIS LEASE.	20. ROTARY OR CABLE TOOLS
19. PROPOSED DEPTH	22. APPROX. DATE WORK WILL START
21. ELEVATIONS (DF, FT, GR, ETC.) 6820' GR	
23. PROPOSED CASING AND CEMENTING PROGRAM	
*SEE OPERATIONS PLAN	
24. AUTHORIZED BY: <i>[Signature]</i> (CJS) REGULATORY AFFAIRS	10-22-90 DATE

PERMIT NO. _____ APPROVAL DATE _____

APPROVED BY _____ TITLE _____ DATE APPROVED _____

NOTE: THIS FORMAT IS ISSUED IN LIEU OF US BLM FORM 3160-3.
(NO ADDITIONAL DIRT WORK WILL BE REQUIRED)

NSL-2950
E

INMOCD

NOV 06 1990
[Signature]
AREA MANAGER

Submit to Appropriate
District Office
State Lease - 4 copies
Fee Lease - 3 copies

State of New Mexico
Energy, Minerals and Natural Resources Department

Form C-102
Revised 1-1-89

OIL CONSERVATION DIVISION

P.O. Box 2088

Santa Fe, New Mexico 87504-2088

DISTRICT I
P.O. Box 1980, Hobbs, NM 88240

DISTRICT II
P.O. Drawer DD, Artesia, NM 88210

DISTRICT III
1000 Rio Brazos Rd., Aztec, NM 87410

WELL LOCATION AND ACREAGE DEDICATION PLAT

All Distances must be from the outer boundaries of the section

Operator Meridian Oil Inc.			Lease (Jic. Cont #126) Jicarilla 126 S		Well No. 13
Unit Letter I	Section 12	Township 24 North	Range 4 West	County NMPM Rio Arriba	
Actual Footage Location of Well: 1850 feet from the <i>South</i> North line and 990 feet from the East line					
Ground level Elev. 6820'	Producing Formation Fruitland Coal		Pool Basin	Dedicated Acreage: 320 Acres	

1. Outline the acreage dedicated to the subject well by colored pencil or hectare marks on the plat below.
2. If more than one lease is dedicated to the well, outline each and identify the ownership thereof (both as to working interest and royalty).
3. If more than one lease of different ownership is dedicated to the well, have the interest of all owners been consolidated by communitization, unitization, force-pooling, etc.?
☐ Yes ☐ No If answer is "yes" type of consolidation _____

If answer is "no" list the owners and tract descriptions which have actually been consolidated. (Use reverse side of this form if necessary).

No allowable will be assigned to the well until all interests have been consolidated (by communitization, unitization, forced-pooling, or otherwise) or until a non-standard unit, eliminating such interest, has been approved by the Division.

Not resurveyed
Prepared from plat
By: Ernest V. Echohawk
Dated: June 16, 1956

OPERATOR CERTIFICATION

I hereby certify that the information contained herein is true and complete to the best of my knowledge and belief.

Signature

Peggy Bradfield

Printed Name

Regulatory Affairs

Position

Meridian Oil Inc.

Company

10-22-90

Date

SURVEYOR CERTIFICATION

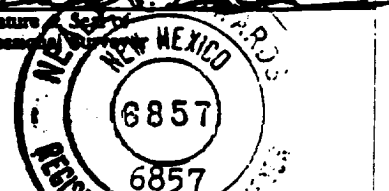
I hereby certify that the well location shown on this plat was plotted from field notes of actual surveys made by me or under my supervision, and that the same is true and correct to the best of my knowledge and belief.

10-20-90

Date Surveyed

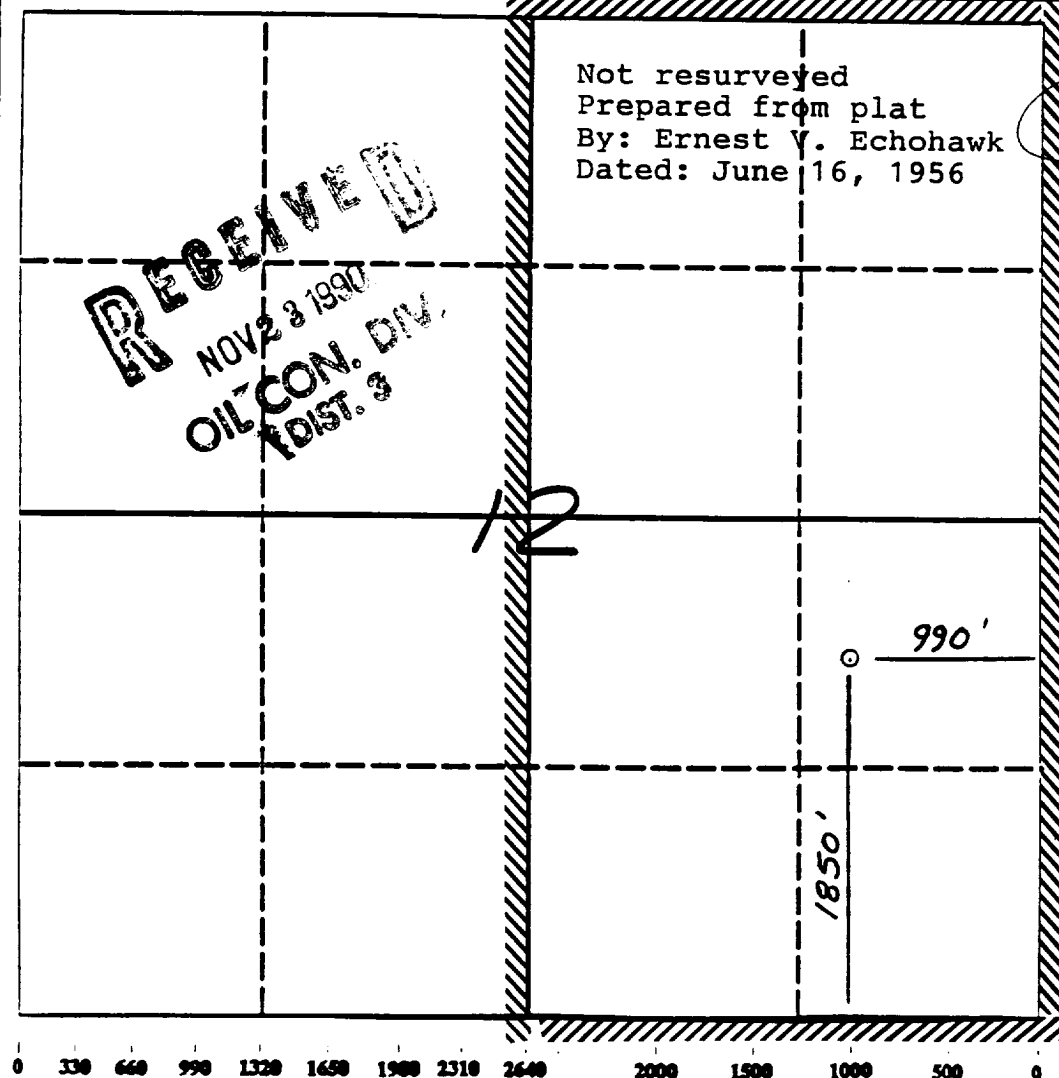
Signature

Professional Surveyor



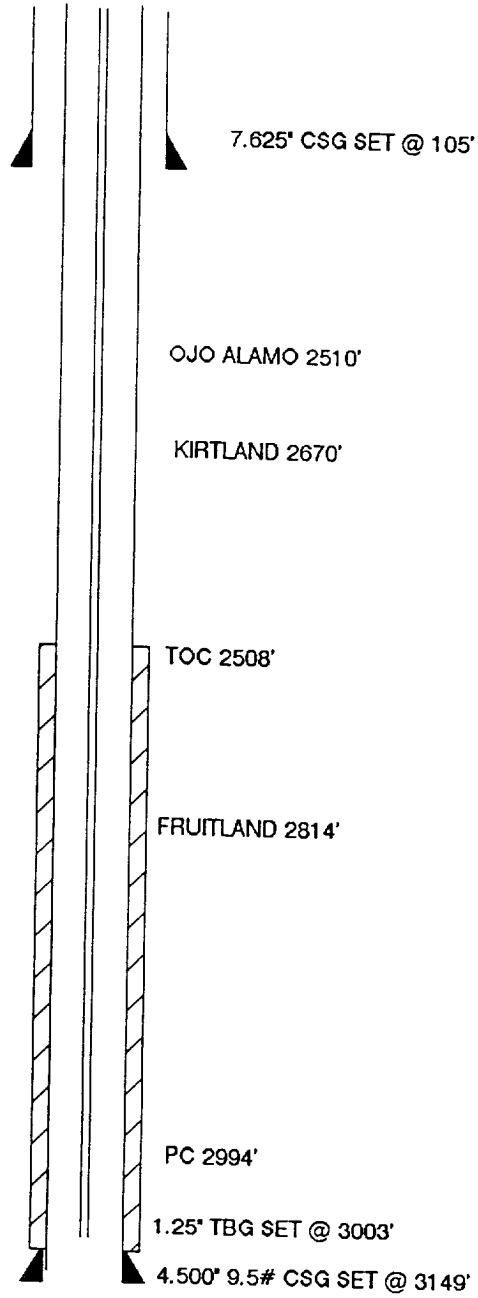
Certificate No.

Neale C. Edwards

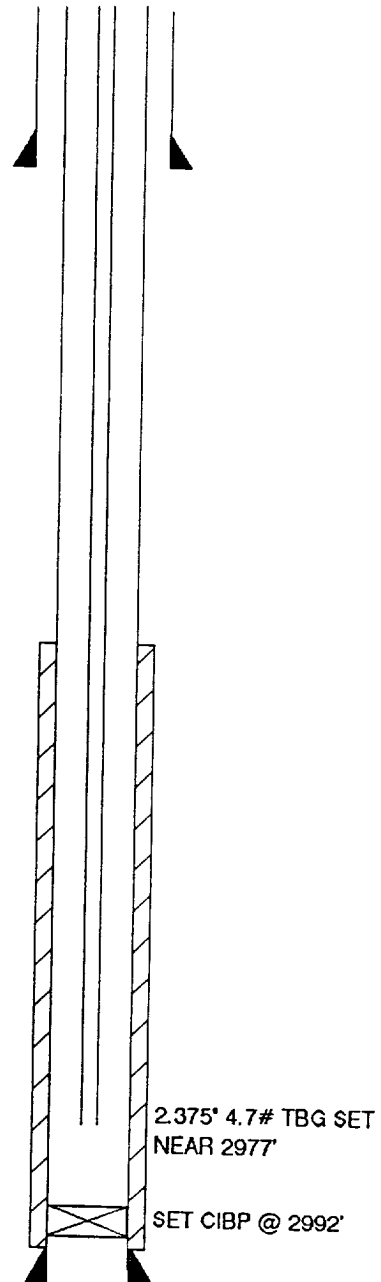


JICARILLA 126S #13 WELLBORE DIAGRAMS

BEFORE R/C



AFTER R/C

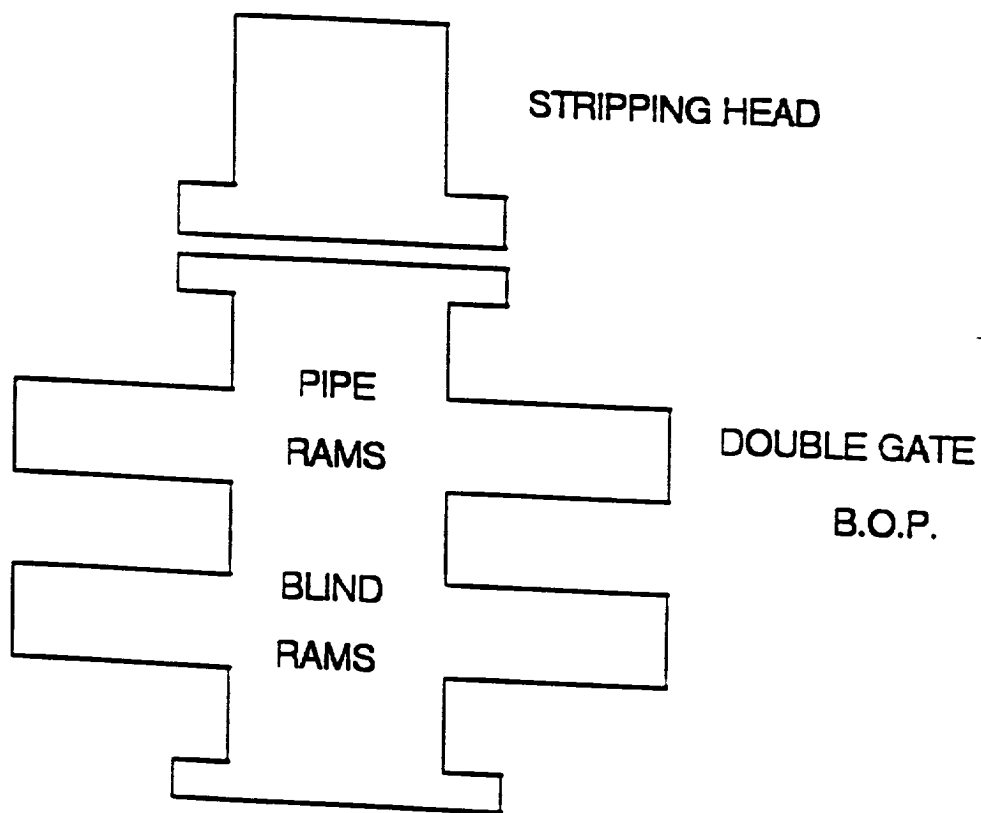


RECOMPLETION PROCEDURE
Jicarilla 126S #13

NO WORK TO BE PERFORMED OFF APPROVED WELLPAD

1. Prepare location for workover. Install or replace anchors as necessary.
2. MOL with workover rig, hold safety meeting, install safety signs and proper fire equipment at strategic points. Comply with all BLM, NMOCD, and MOI regulations.
3. Rig up blow lines, record tubing and casing pressures and blow well down. NU 6" 3000 psi BOP and test. Load hole with water. TOOH with 1.25" tubing.
4. PU 4-1/2" casing scraper and TIH with 2-3/8" 4.7# J-55 EUE tubing. CO to 2992'. TOOH.
5. RU wireline unit and set a 4-1/2 " CIBP @ 2992'. Pressure test casing to 500 psi for 15 minutes.
6. Run logs.
7. Perforate coal. Perforations to be picked from log.
8. TIH with 2-3/8" tubing and swab wellbore dry. Check well for gas flow. Evaluate well overnight. Check well for buildup pressure and gas flow. Evaluate for fracture stimulation.
9. TIH with 2-3/8" tubing and clean out to 2992'.
11. When well is clean, land 2-3/8" tubing with a common pump seating nipple one joint off bottom. Land tubing near 2977'. Swab well in. Record final 30, 45 and 60 minute gauges on morning report. ND BOP. NU tree. RD and release rig.
12. Shut well in for pressure build up. Obtain gas and water sample for analysis.

WORKOVER / RECOMPLETION B.O.P. SCHEMATIC



MINIMUM: 6" 2000 PSI DOUBLE GATE B.O.P.
MAXIMUM ANTICIPATED SHUT-IN WELLHEAD
PRESSURE IS LESS THAN 2000 PSI