

NUMBER OF COPIES RECEIVED		5
DISTRIBUTION		
SANTA FE	1	✓
FILE	1	✓
U.S.G.S.	2	
LAND OFFICE		
TRANSPORTER		
OIL		
GAS		
PRODUCTION OFFICE		
OPERATOR	1	

NEW MEXICO OIL CONSERVATION COMMISSION
WELL LOCATION AND ACREAGE DEDICATION PLAT
 SEE INSTRUCTIONS FOR COMPLETING THIS FORM ON THE REVERSE SIDE

FORM C-128
 Revised 5/1/57

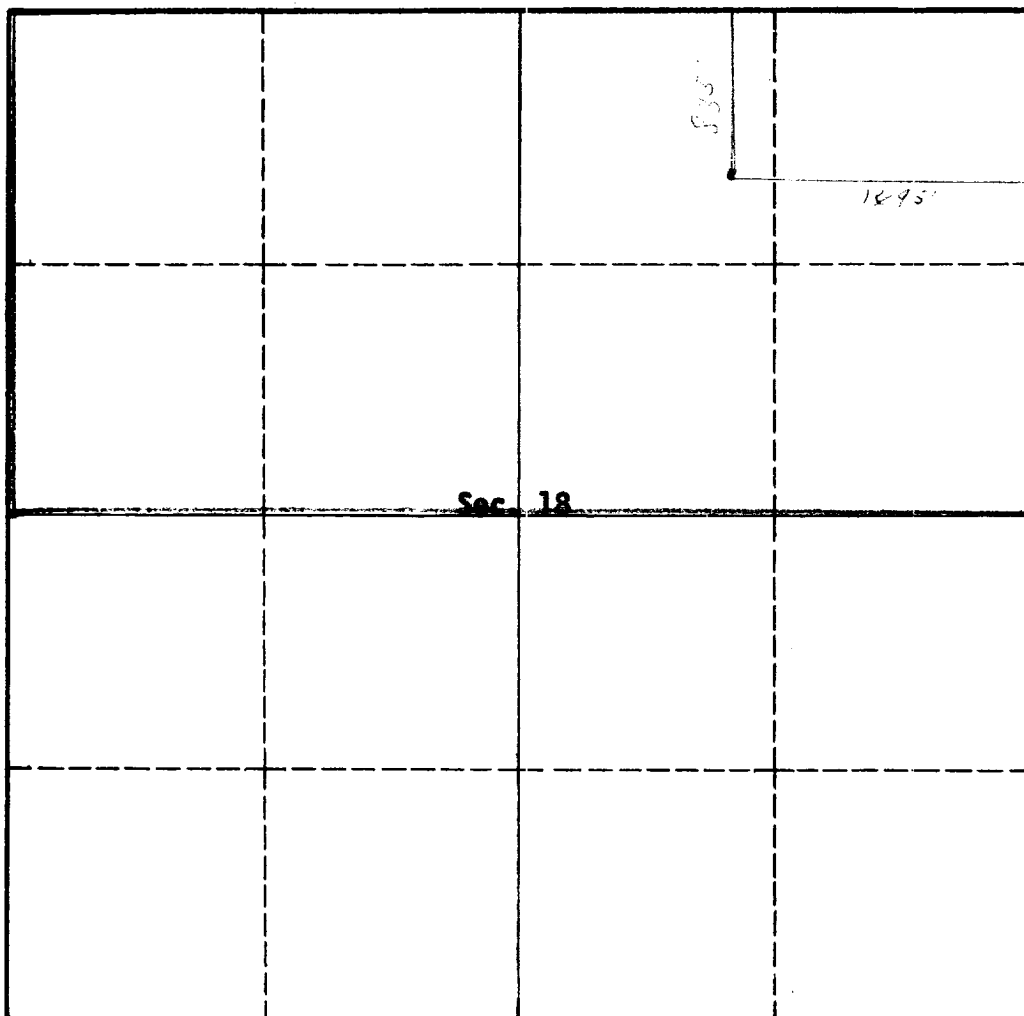
SECTION A

Operator Benson-Montin-Greer Drilling Corp.			Lease Canada Ojitos Unit			Well No. 5 (B-18)		
Unit Letter B	Section 18	Township 25 North	Range 1 East	County Rio Arriba				
Actual Footage Location of Well: 835 feet from the North line and 1495 feet from the East line								
Ground Level Elev. 7194		Producing Formation Mancos		Pool West Puerto Chiquito-Mancos			Dedicated Acreage: 320 Acres	

1. Is the Operator the only owner in the dedicated acreage outlined on the plat below? YES ☒ NO ____ . ("Owner" means the person who has the right to drill into and to produce from any pool and to appropriate the production either for himself or for himself and another. (65-3-29 (e) NMSA 1935 Comp.)
2. If the answer to question one is "no," have the interests of all the owners been consolidated by communitization agreement or otherwise? YES ____ NO ____ . If answer is "yes," Type of Consolidation ____
3. If the answer to question two is "no," list all the owners and their respective interests below:

Owner	Land Description

SECTION B



CERTIFICATION

I hereby certify that the information in SECTION A above is true and complete to the best of my knowledge and belief.

[Signature]
 Name

Engineer

Position

Benson-Montin-Greer Drilling Corp.
 Company

December 9, 1966
 Date

RECEIVED
DEC 13 1966
OIL CON. COM.
DIST. 3

I hereby certify that the well location shown on the plat in SECTION B was plotted from field notes of actual surveys made by me or under my supervision, and that the same is true and correct to the best of my knowledge and belief.

Date Surveyed

Registered Professional Engineer and/or Land Surveyor

Certificate No.

0 330 660 990 1320 1650 1980 2310 2640 2000 1500 1000 500 0

INSTRUCTIONS FOR COMPLETION OF FORM C-128

1. Operator shall furnish and certify to the information called for in Section A.
2. Operator shall outline the dedicated acreage for *both* oil and gas wells on the plat in Section B.
3. A registered professional engineer or land surveyor registered in the State of New Mexico or approved by the Commission shall show on the plat the location of the well and certify this information in the space provided.
4. All distances shown on the plat must be from the outer boundaries of the Section.
5. If additional space is needed for listing owners and their respective interests as required in question 3 of Section A, please use space below.