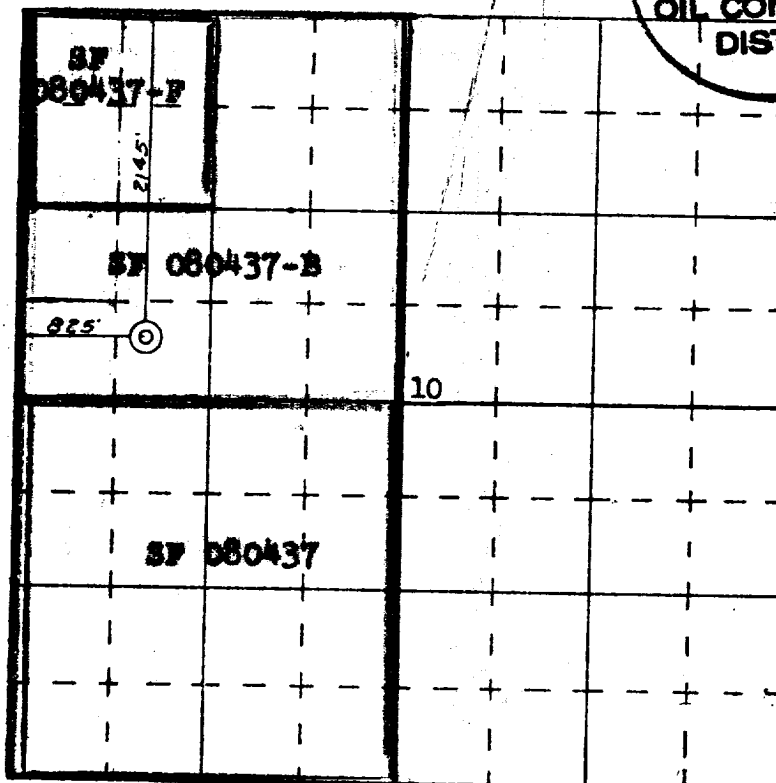
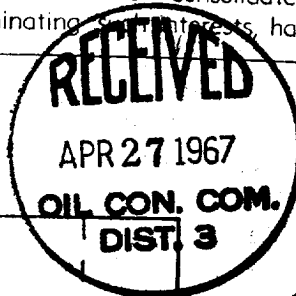


**NEW MEXICO OIL CONSERVATION COMMISSION
WELL LOCATION AND ACERAGE DEDICATION PLAT**

All distances must be from the outer boundaries of the Section

| | | | | | | | |
|---|----------------------|--------------------------------------|------------------------|-------------------------------------|--|-------------------------------|--|
| Operator BENSON-MONTIN-GREER DRILLING CORP. | | | | Lease CANADA SITOS UNIT | | Well No. (E-10) | |
| Unit Letter E | Section 10 | Township 25 NORTH | Range 1 WEST | County RIO ARRIBA | | | |
| Actual Footage Location of Well: 2145 feet from the NORTH line and 825 feet from the WEST line | | | | | | | |
| Ground Level Elev. 7329.0 | | Producing Formation Mabcos | | Pool West Puerto Chiquito | | Dedicated Acres 320 | |

- Outline the acreage dedicated to the subject well by colored pencil or hachure marks on the plat below.
- If more than one lease is dedicated to the well, outline each and identify the ownership thereof (both as to working interest and royalty). **Ownership is the same in all cases.**
- If more than one lease of different ownership is dedicated to the well, have the interests of all owners been consolidated by communization, unitization, force-pooling, etc?
 () Yes () No If answer is "yes," type of consolidation _____
 If answer is "no," list the owners and tract descriptions which have actually consolidated. (Use reverse side of this form if necessary) _____
 No allowable will be assigned to the well until all interests have been consolidated (by communization, unitization, forced-pooling, or otherwise) or until a non standard unit, eliminating such interests, has been approved by the Commission.



SCALE—4 INCHES EQUALS 1 MILE

CERTIFICATION

I hereby certify that the information contained herein is true and complete to the best of my knowledge and belief.

Name *Chief H. Greer*
 Position **Engineer**
 Company **Benson-Montin-Greer Drllg. Corp.**
 Date **April 25, 1967**

I hereby certify that the well location shown on this plat was plotted from field notes of actual surveys made by me or under my supervision, and that the same is true and correct to the best of my knowledge and belief.

