

UNITED STATES
DEPARTMENT OF THE INTERIOR
GEOLOGICAL SURVEY

APPLICATION FOR PERMIT TO DRILL, DEEPEN, OR PLUG BACK

1a. TYPE OF WORK

DRILL ☒DEEPEN ☐PLUG BACK ☐

b. TYPE OF WELL

OIL
WELL ☐GAS
WELL ☒

OTHER

SINGLE
ZONE ☐MULTIPLE
ZONE ☒

2. NAME OF OPERATOR

Continental Oil Company

3. ADDRESS OF OPERATOR

152 North Durbin, Casper, Wyoming 82601

4. LOCATION OF WELL (Report location clearly and in accordance with any State requirements.*)

At surface

At proposed prod. zone NW SW 1695' FSL, 950' FWL (Unit Letter "L")

14. DISTANCE IN MILES AND DIRECTION FROM NEAREST TOWN OR POST OFFICE*

15. DISTANCE FROM PROPOSED*

LOCATION TO NEAREST
PROPERTY OR LEASE LINE, FT.
(Also to nearest drlg. unit line, if any)18. DISTANCE FROM PROPOSED LOCATION*
TO NEAREST WELL, DRILLING, COMPLETED,
OR APPLIED FOR, ON THIS LEASE, FT.

16. NO. OF ACRES IN LEASE

2560

19. PROPOSED DEPTH

5200'

17. NO. OF ACRES ASSIGNED
TO THIS WELL

152 1/2 each to Chacra & Mesa Verde

20. ROTARY OR CABLE TOOLS

Rotary

21. ELEVATIONS (Show whether DF, RT, GR, etc.)

6524' GR

22. APPROX. DATE WORK WILL START*

11-26-71

23.

PROPOSED CASING AND CEMENTING PROGRAM

SIZE OF HOLE	SIZE OF CASING	WEIGHT PER FOOT	SETTING DEPTH	QUANTITY OF CEMENT
12 1/4"	8 5/8"	24.0#	200'	150 sacks (to surface)
7 7/8"	5 1/2"	14.0#	5200'	400 sacks (to 200' above P.C.)

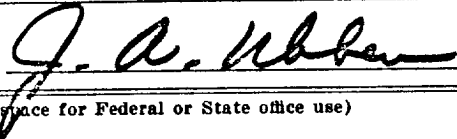
We are proposing to drill and equip AXI Apache Well No. 22 to test for commercial production in both the Chacra and Mesa Verde zones. The well will be drilled to a total depth of 5200' with rotary tools. All appropriate logs will be run and no coring or DST's are planned. If commercial production exists, the well will be completed by running production casing as indicated above. The rig will be equipped with a blowout preventer.

USGS-Durango(6) File(2) Humble Oil

IN ABOVE SPACE DESCRIBE PROPOSED PROGRAM: If proposal is to deepen or plug back, give data on present productive zone and proposed new productive zone. If proposal is to drill or deepen directionally, give pertinent data on surface locations and measured and true vertical depths. Give blowout preventer program, if any.

24.

SIGNED



TITLE Administrative Supervisor

DATE 11-15-71

(This space for Federal or State office use)

PERMIT NO.

APPROVAL DATE

APPROVED BY

TITLE

DATE

CONDITIONS OF APPROVAL, IF ANY:

*See Instructions On Reverse Side

Instructions

General: This form is designed for submitting proposals to perform certain well operations, as indicated, on all types of lands and leases for appropriate action by either a Federal or a State agency, or both, pursuant to applicable Federal and/or State laws and regulations. Any necessary special instructions concerning the use of this form and the number of copies to be submitted, particularly with regard to local, area, or regional procedures and practices, either are shown below or will be issued by, or may be obtained from, the local Federal and/or State office.

Item 1: If the proposal is to re-drill to the same reservoir at a different subsurface location or to a new reservoir, use this form with appropriate notations. Consult applicable State or Federal regulations concerning subsequent work, proposals or reports on the well.

Item 4: If there are no applicable State requirements, locations on Federal or Indian land should be described in accordance with Federal requirements. Consult local State or Federal office for specific instructions.

Item 14: Needed only when location of well cannot readily be found by road from the land or lease description. A plat or plats, separate or on this reverse side, showing the roads to, and the surveyed location of, the well, and any other required information, should be furnished when required by Federal or State agency offices.

Items 15 and 18: If well is to be, or has been directionally drilled, give distances for subsurface location of hole in any present or objective production zone.

Item 22: Consult applicable Federal or State regulations, or appropriate officials, concerning approval of the proposal before operations are started.

NEW MEXICO OIL CONSERVATION COMMISSION WELL LOCATION AND ACERAGE DEDICATION PLAT

All distances must be from the outer boundaries of the Section

Oil Co. **CONTINENTAL OIL COMPANY** Loc. **JICARILLA "J"** Well No. **1522**
 Township **25 NORTH** Range **5 WEST** Section **6**
 Section **1695** Distance from the **WEST** line **159.11** Distance from the **SOUTH** line **160**
 Section **6524.0** *Otero Chacra & Under M.V.*

1. Oil rights are indicated to the subject well by colored lines or hatchure marks on the plat below.

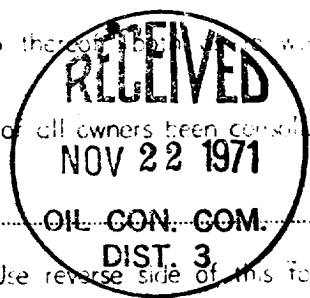
2. If more than one lease is indicated to the well, outline each and identify the ownership thereon. Also indicate the working interest and royalty.

3. If more than one lease of different ownership is indicated to the well, have the interests of all owners been consolidated by communization, unitization, force-pooling, etc?

Yes ☐ No ☐ If answer is "yes," type of consolidation _____

If answer is "no" list the owners and tract descriptions which have actually consolidated. (Use reverse side of this form if necessary.) _____

No allowable will be assigned to the well until all interests have been consolidated (by communization, unitization, forced-pooling, or otherwise) or until a non standard unit, eliminating such interests, has been approved by the Commission.



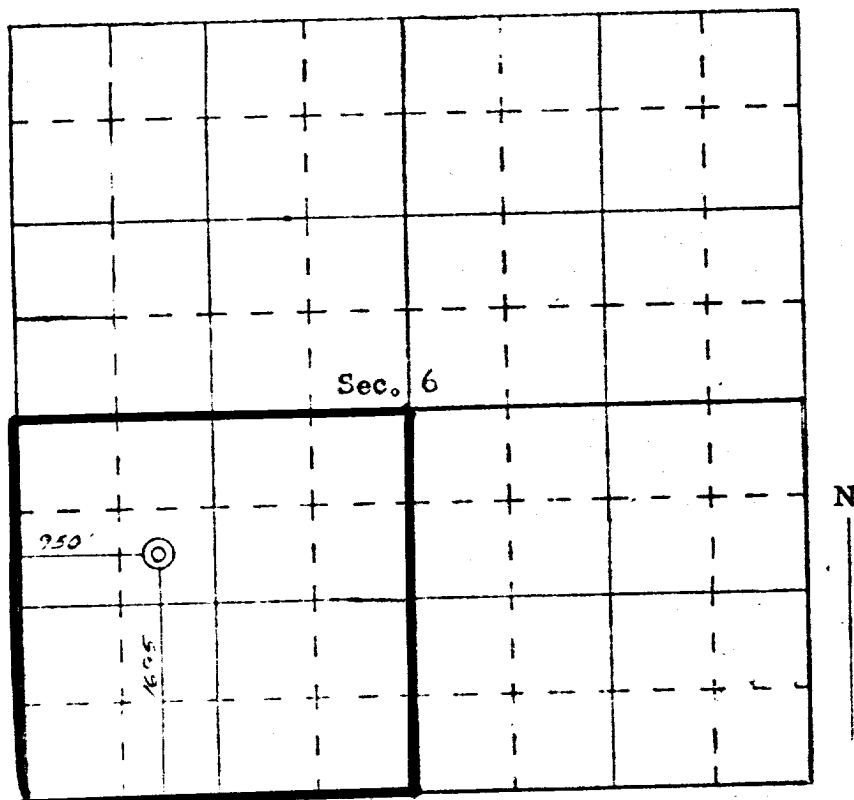
CERTIFICATION

I hereby certify that the information contained herein is true and complete to the best of my knowledge and belief.

Name _____
 Position _____
Administrative Supervisor
 Company _____
Continental Oil Company
 Date _____
November 15, 1971

I hereby certify that the well location shown on this plat was plotted from field notes of actual surveys made by me or under my supervision, and that the same is true and correct to the best of my knowledge and belief.

18 August, 1971
[Signature]
James P. Hesse



SCALE—4 INCHES EQUALS 1 MILE