

**NEW MEXICO OIL CONSERVATION COMMISSION
WELL LOCATION AND ACERAGE DEDICATION PLAT**

All distances must be from the outer boundaries of the Section

Operator: BENSON-MONTIN-GREER DRLG. CORP. Lease Cole (SF 080437-B)					Well No. COLE #1
Unit Letter H	Section 9	Township 25 NORTH	Range 1 WEST	County RIO ARriba	
Actual Footage Location of Well:					
1450 feet from the NORTH line and		1190 feet from the EAST line			
Ground Level Elev. 7357.0	Producing Formation Pictured Cliffs	Pool Undesignated	Dedicated Acreage: 160 ^{N3} Acres		

1. Outline the acreage dedicated to the subject well by colored pencil or hachure marks on the plat below.
2. If more than one lease is dedicated to the well, outline each and identify the ownership thereof (both as to working interest and royalty),
3. If more than one lease of different ownership is dedicated to the well, have the interests of all owners been consolidated by communitization, unitization, force-pooling, etc?

() Yes () No If answer is "yes," type of consolidation

If answer is "no," list the owners and tract descriptions which have actually consolidated. (Use reverse side of this Form if necessary.)

No allowable will be assigned to the well until all interests have been consolidated (by communitization, unitization, forced-pooling, or otherwise) or until a non standard unit, eliminating such interests, has been approved by the Commission.

CERTIFICATION

I hereby certify that the information contained herein is true and complete to the best of my knowledge and belief.

Virgil L. Stoabs
Name

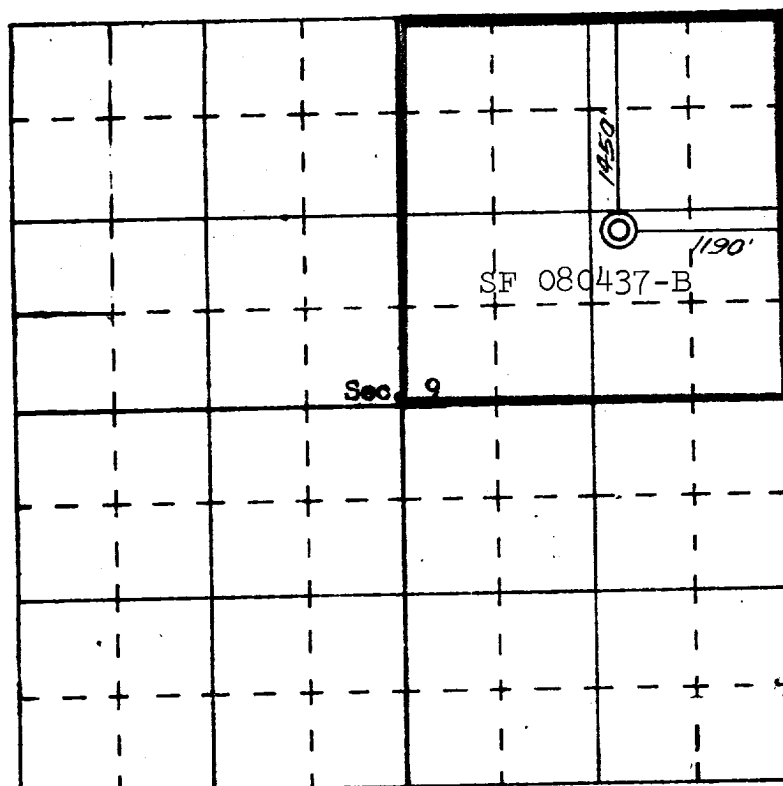
Virgil L. Stoabs

Position
Vice-President

Company
Benson-Montin-Greer Drlg.
Date June 29, 1972 Corp.

I hereby certify that the well location shown on this plat was plotted from field notes of actual surveys made by me or under my supervision, and that the same is true and correct to the best of my knowledge and belief.

Date Surveyed **19 JUL 3 1972**
Registered Professional Engineer
and/or Licensed Surveyor
JAMES P. LEASE
1463
NEW MEXICO
Certificate No. **JAMES P. LEASE**



SCALE—4 INCHES EQUALS 1 MILE

SAN JUAN ENGINEERING COMPANY, FARMINGTON, N. M.