

UNITED STATES
DEPARTMENT OF THE INTERIOR
GEOLOGICAL SURVEY

APPLICATION FOR PERMIT TO DRILL, DEEPEN, OR PLUG BACK

1a. TYPE OF WORK

DRILL ☒DEEPEN ☐PLUG BACK ☐

b. TYPE OF WELL

OIL
WELL ☐GAS
WELL ☒

OTHER

SINGLE
ZONE ☐MULTIPLE
ZONE ☒

2. NAME OF OPERATOR

Chace Oil Company, Inc.

3. ADDRESS OF OPERATOR

313 Washington, S.E. Albuquerque, N.M. 87108

4. LOCATION OF WELL (Report location clearly and in accordance with any State requirements.)*

At surface Unit C 1590' FWL, 1080 FNL, Section 33

T-24-N, R-4-W
At proposed prod. zone

14. DISTANCE IN MILES AND DIRECTION FROM NEAREST TOWN OR POST OFFICE*

9 1/2 Miles W-N.W. of Lindrith, New Mexico

15. DISTANCE FROM PROPOSED*

LOCATION TO NEAREST
PROPERTY OR LEASE LINK, FT.
(Also to nearest drlg. unit line, if any)

1590'

16. NO. OF ACRES IN LEASE

2560±

18. DISTANCE FROM PROPOSED LOCATION*

TO NEAREST WELL, DRILLING, COMPLETED,
OR APPLIED FOR, ON THIS LEASE, FT.

3500'

19. PROPOSED DEPTH

7350'

21. ELEVATIONS (Show whether DF, RT, GR, etc.)

6428 GR

23.

PROPOSED CASING AND CEMENTING PROGRAM

SIZE OF HOLE	SIZE OF CASING	WEIGHT PER FOOT	SETTING DEPTH	QUANTITY OF CEMENT
12 1/2	8-5/8	22	300'	125 sxs
7 1/2	5	18	?	200 sxs

Plans are to dually complete this well in the Pictured Cliffs (3000') and either the Gallup (6000') or Dakota (7250'). An adequate blow-out preventer will be used along with possibly Bariod's Dextrid mud system.

IN ABOVE SPACE DESCRIBE PROPOSED PROGRAM: If proposal is to deepen or plug back, give data on present productive zone and proposed new productive zone. If proposal is to drill or deepen directionally, give pertinent data on subsurface locations and measured and true vertical depths. Give blowout preventer program, if any.

24.

SIGNED

TITLE

President

DATE

11-8-72

(This space for Federal or State office use)

PERMIT NO.

APPROVAL DATE

APPROVED BY

TITLE

DATE

CONDITIONS OF APPROVAL, IF ANY

NEW MEXICO OIL CONSERVATION COMMISSION

WELL LOCATION AND ACERAGE DEDICATION PLAT

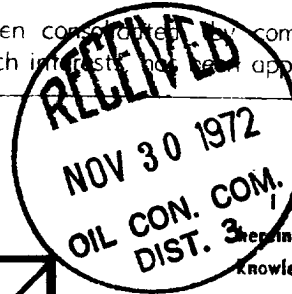
All distances must be from the outer boundaries of the Section

Operator CHACE OIL COMPANY	Lease Dec 70	Well No. 3
Unit Letter C	Section 33	Township 24 NORTH
	Range 4 WEST	County RIO ARriba
Actual Footage Location of Well: 1080 feet from the NORTH line and 1590 feet from the WEST line		
Ground Level Elev. 6428.0	Production Formation Ballard PC EXT. Basin DAK	Dedicated Acreage 320-160 Acres DK PE

- Outline the acreage dedicated to the subject well by colored pencil or hachure marks on the plat below.
- If more than one lease is dedicated to the well, outline each and identify the ownership thereof (both as to working interest and royalty).
- If more than one lease of different ownership is dedicated to the well, have the interests of all owners been consolidated by communization, unitization, force-pooling, etc?
() Yes () No If answer is "yes," type of consolidation _____

If answer is "no," list the owners and tract descriptions which have actually consolidated. (Use reverse side of this form if necessary) _____

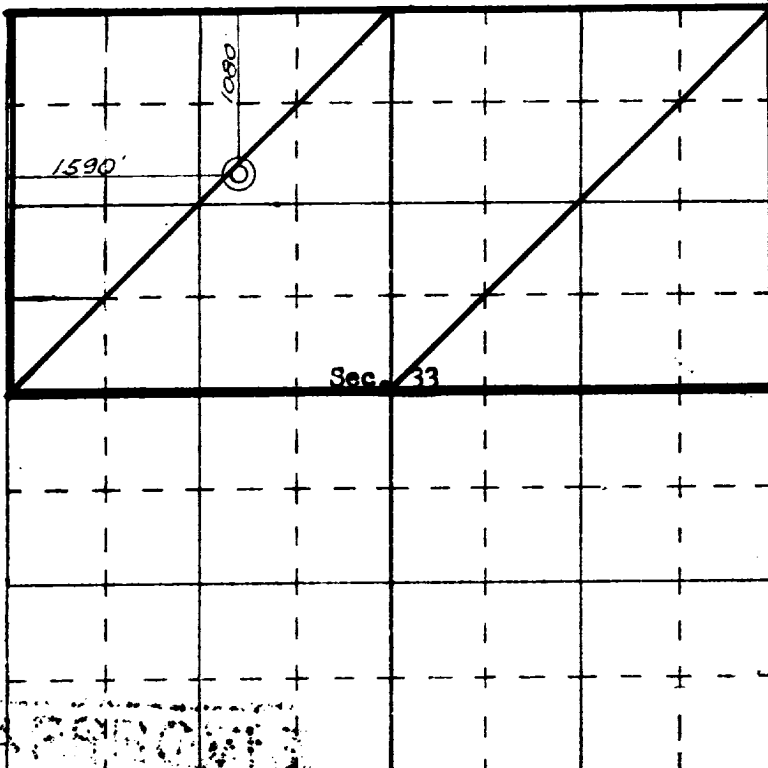
No allowable will be assigned to the well until all interests have been consolidated by communization, unitization, forced-pooling, or otherwise) or until a non standard unit, eliminating such interests, has been approved by the Commission.



CERTIFICATION

I hereby certify that the information contained herein is true and complete to the best of my knowledge and belief.

Name Loza M. Cary
Position _____
Company _____
Date _____



SCALE - 1/4 INCHES EQUALS 1 MILE

SAN JUAN ENGINEERING COMPANY, FARMINGTON, N. M.

I hereby certify that the well location shown on this plat was plotted from field notes of actual surveys made by me or under my supervision, and that the same is true and correct to the best of my knowledge and belief.

Date Surveyed 31 October, 1972
Registered Professional Engineer and/or Land Surveyor
JAMES P. LEESE
1463
Certificate No. _____

