

UNITED STATES
DEPARTMENT OF THE INTERIOR
GEOLOGICAL SURVEY

APPLICATION FOR PERMIT TO DRILL, DEEPEN, OR PLUG BACK.

1a. TYPE OF WORK
 DRILL DEEPEN PLUG BACK

b. TYPE OF WELL
 OIL WELL GAS WELL OTHER SINGLE ZONE MULTIPLE ZONE

2. NAME OF OPERATOR
 AMOCO PRODUCTION COMPANY

3. ADDRESS OF OPERATOR
 501 Airport Drive, Farmington, New Mexico 87401

4. LOCATION OF WELL (Report location clearly and in accordance with any State requirements.)*
 At surface 1450' FSL, 1500' FWL, Section 1, T-24-N, R-5-W
 At proposed prod. zone Same

14. DISTANCE IN MILES AND DIRECTION FROM NEAREST TOWN OR POST OFFICE*
 16 miles NW of Counselors, New Mexico

10. DISTANCE FROM PROPOSED* LOCATION TO NEAREST PROPERTY OR LEASE LINE, FT. (Also to nearest drlg. unit line, if any) 1450'

16. NO. OF ACRES IN LEASE 2560

17. NO. OF ACRES ASSIGNED TO THIS WELL 320

18. DISTANCE FROM PROPOSED LOCATION* TO NEAREST WELL, DRILLING, COMPLETED, OR APPLIED FOR, ON THIS LEASE, FT. 6250'

19. PROPOSED DEPTH 7500'

20. ROTARY OR CABLE TOOLS Rotary

21. ELEVATIONS (Show whether DF, RT, GR, etc.)
 6753' GL

22. APPROX. DATE WORK WILL START*
 As soon as permitted

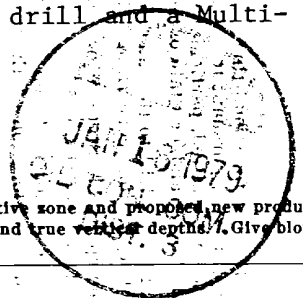
23. PROPOSED CASING AND CEMENTING PROGRAM

SIZE OF HOLE	SIZE OF CASING	WEIGHT PER FOOT	SETTING DEPTH	QUANTITY OF CEMENT
12-1/4"	8-5/8"	24#	300'	200 sx
7-7/8"	4-1/2"	10.5#	7500'	2200 sx

The above well is being drilled to further develop the Basin Dakota Field. The well will be drilled with a low solids non-dispersed mud system. Completion design will be based on open hole logs. Copy of all logs will be filed upon completion.

The gas from this well is dedicated to El Paso Natural Gas Company.

Additional information required by NTL-6 for the application to drill and a Multi-Point surface Use Plan are attached.



IN ABOVE SPACE DESCRIBE PROPOSED PROGRAM: If proposal is to deepen or plug back, give data on present productive zone and proposed new productive zone. If proposal is to drill or deepen directionally, give pertinent data on subsurface locations and measured and true vertical depths. Give blowout preventer program, if any.

24. SIGNED [Signature] TITLE District Engineer DATE January 12, 1979

(This space for Federal or State office use)

PERMIT NO. _____ APPROVAL DATE _____

APPROVED BY _____ TITLE _____ DATE _____

CONDITIONS OF APPROVAL, IF ANY:

[Signature]

JUN 15 1979

NEW MEXICO OIL CONSERVATION COMMISSION
WELL LOCATION AND ACREAGE DEDICATION PLAT

Form C-102
Supersedes C-128
Effective 1-1-65

All distances must be from the outer boundaries of the Section.

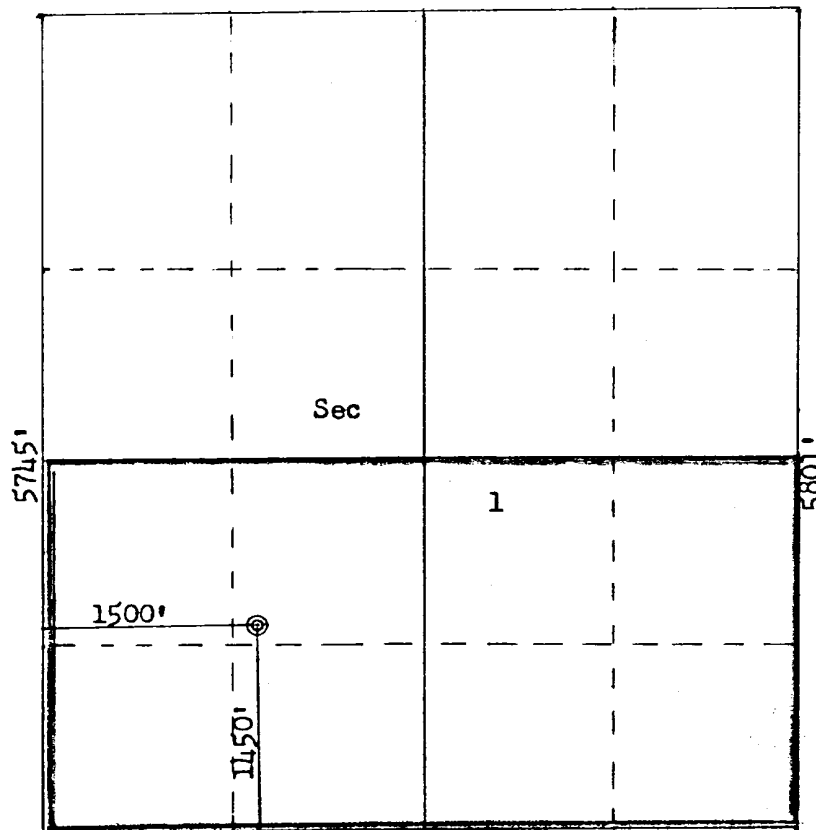
Operator AMOCO PRODUCTION COMPANY		Lease JICARILLA APACHE TRIBAL 35		Well No. 1
Unit Letter K	Section 1	Township 24N	Range 5W	County Rio Arriba
Actual Footage Location of Well: 1450 feet from the South line and 1500 feet from the West line				
Ground Level Elev: 6753	Producing Formation Dakota	Pool Basin Dakota	Dedicated Acreage: 320 Acres	

1. Outline the acreage dedicated to the subject well by colored pencil or hachure marks on the plat below.
2. If more than one lease is dedicated to the well, outline each and identify the ownership thereof (both as to working interest and royalty).
3. If more than one lease of different ownership is dedicated to the well, have the interests of all owners been consolidated by communitization, unitization, force-pooling, etc?

Yes No If answer is "yes," type of consolidation _____

If answer is "no," list the owners and tract descriptions which have actually been consolidated. (Use reverse side of this form if necessary.) _____

No allowable will be assigned to the well until all interests have been consolidated (by communitization, unitization, forced-pooling, or otherwise) or until a non-standard unit, eliminating such interests, has been approved by the Commission.



Scale: 1"=1320'

CERTIFICATION	
<i>I hereby certify that the information contained herein is true and complete to the best of my knowledge and belief.</i>	
<i>J. L. Krupka</i>	
Name	J. L. KRUPKA
Position	DISTRICT ENGINEER
Company	AMOCO PRODUCTION COMPANY
Date	DECEMBER 12, 1978
<i>I hereby certify that the well location shown on this plat was plotted from field notes of actual surveys made by me or under my supervision, and that the same is true and correct to the best of my knowledge and belief.</i>	
Date Surveyed	November 29, 1978
Registered Professional Engineer and Land Surveyor	
<i>Fred B. Kerr Jr.</i>	
Certificate No.	3950

