

UNITED STATES
DEPARTMENT OF THE INTERIOR
GEOLOGICAL SURVEY

APPLICATION FOR PERMIT TO DRILL, DEEPEN, OR PLUG BACK

1a. TYPE OF WORK

DRILL ☒

DEEPEN ☐

PLUG BACK ☐

b. TYPE OF WELL

OIL
WELL ☐

GAS
WELL ☒

OTHER

SINGLE
ZONE ☒

MULTIPLE
ZONE ☐

2. NAME OF OPERATOR

AMOCO PRODUCTION COMPANY

3. ADDRESS OF OPERATOR

501 Airport Drive, Farmington, New Mexico 87401

4. LOCATION OF WELL (Report location clearly and in accordance with any State requirements.)*

At surface

2110' FNL, 1150' FWL, Section 2, T-24-N, R-5-W

At proposed prod. zone

SAME

14. DISTANCE IN MILES AND DIRECTION FROM NEAREST TOWN OR POST OFFICE*

17 miles northwest of Counselors, New Mexico

15. DISTANCE FROM PROPOSED*

LOCATION TO NEAREST
PROPERTY OR LEASE LINE, FT.

(Also to nearest drg. unit line, if any)

1150'

16. NO. OF ACRES IN LEASE

2560

18. DISTANCE FROM PROPOSED LOCATION*
TO NEAREST WELL, DRILLING, COMPLETED,
OR APPLIED FOR, ON THIS LEASE, FT.

3010'

19. PROPOSED DEPTH

7500'

17. NO. OF ACRES ASSIGNED
TO THIS WELL

-320 A/376

20. ROTARY OR CABLE TOOLS

Rotary

21. ELEVATIONS (Show whether DF, RT, GR, etc.)

6750' GL

22. APPROX. DATE WORK WILL START*

As soon as permitted

23.

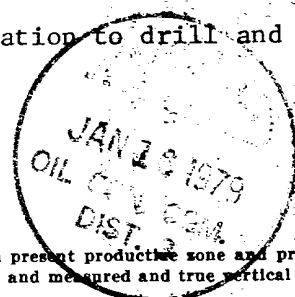
PROPOSED CASING AND CEMENTING PROGRAM

SIZE OF HOLE	SIZE OF CASING	WEIGHT PER FOOT	SETTING DEPTH	QUANTITY OF CEMENT
12-1/4"	8-5/8"	24#	300'	200 sx
7-7/8"	4-1/2"	10.5#	7500'	2200 sx

The above well is being drilled to further develop the Basin Dakota Field. The well will be drilled with a low solids non-dispersed mud system. Completion design will be based on open hole logs. Copy of all logs will be filed upon completion.

The gas from this well is dedicated to El Paso Natural Gas Company.

Additional information required by NTL-6 for the application to drill and a Multi-Point Surface Use Plan are attached.



IN ABOVE SPACE DESCRIBE PROPOSED PROGRAM: If proposal is to deepen or plug back, give data on present productive zone and proposed new productive zone. If proposal is to drill or deepen directionally, give pertinent data on subsurface locations and measured and true vertical depths. Give blowout preventer program, if any.

24.

SIGNED

TITLE District Engineer

DATE January 12, 1979

(This space for Federal or State office use)

PERMIT NO.

APPROVAL DATE

APPROVED BY

TITLE

DATE

CONDITIONS OF APPROVAL, IF ANY:

*See Instructions On Reverse Side

**NEW MEXICO OIL CONSERVATION COMMISSION
WELL LOCATION AND ACREAGE DEDICATION PLAT**

Form C-102
Supersedes C-128
Effective 1-1-65

All distances must be from the outer boundaries of the Section.

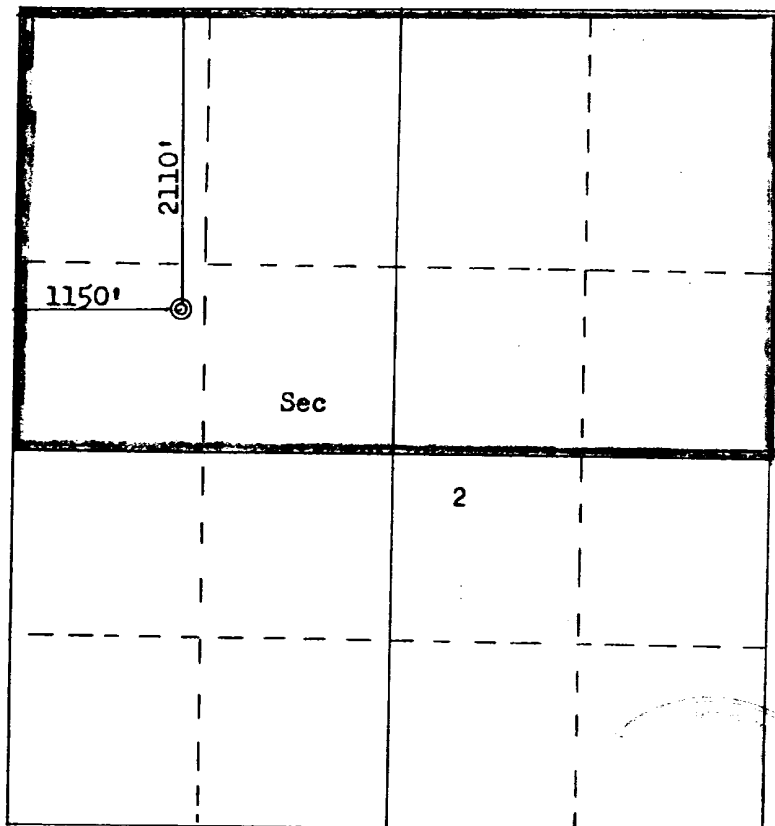
Operator AMOCO PRODUCTION COMPANY			Lease JICARILLA APACHE TRIBAL 35		Well No. 2
Unit Letter E	Section 2	Township 24N	Range 5W	County Rio Arriba	
Actual Footage Location of Well: 2110 feet from the North line and 1150 feet from the West line					
Ground Level Elev: 6750	Producing Formation Dakota		Pool Basin Dakota		Dedicated Acreage: 320 376 Acres

1. Outline the acreage dedicated to the subject well by colored pencil or hachure marks on the plat below.
2. If more than one lease is dedicated to the well, outline each and identify the ownership thereof (both as to working interest and royalty).
3. If more than one lease of different ownership is dedicated to the well, have the interests of all owners been consolidated by communitization, unitization, force-pooling, etc?

☐ Yes ☐ No If answer is "yes," type of consolidation _____

If answer is "no," list the owners and tract descriptions which have actually been consolidated. (Use reverse side of this form if necessary.) _____

No allowable will be assigned to the well until all interests have been consolidated (by communitization, unitization, forced-pooling, or otherwise) or until a non-standard unit, eliminating such interests, has been approved by the Commission.



CERTIFICATION

I hereby certify that the information contained herein is true and complete to the best of my knowledge and belief.

Name
J. L. KRUPKA

Position
DISTRICT ENGINEER

Company
AMOCO PRODUCTION COMPANY

Date
DECEMBER 12, 1978

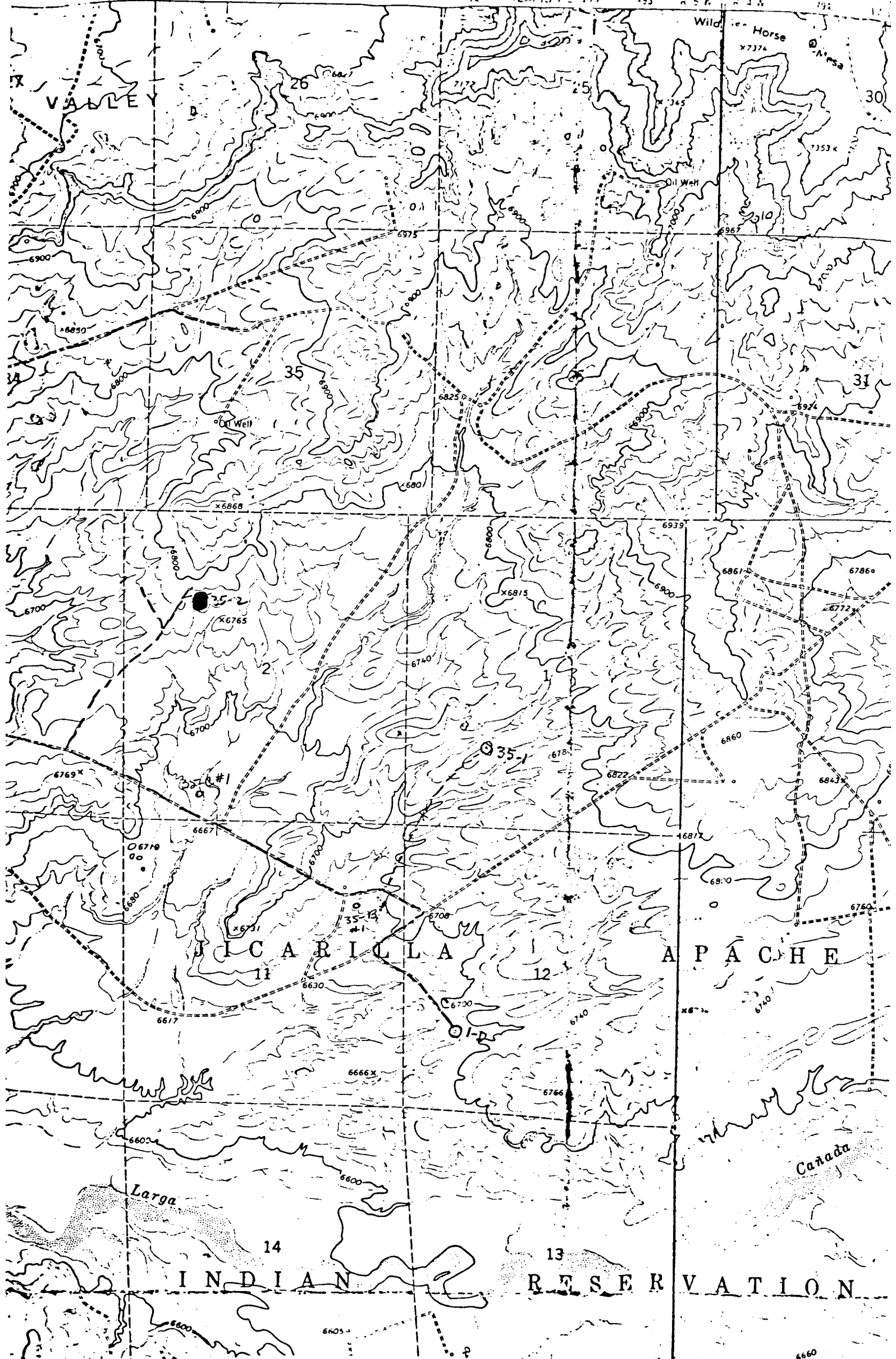
I hereby certify that the well location shown on this plat was plotted from field notes of actual surveys made by me or under my supervision, and that the same is true and correct to the best of my knowledge and belief.

Date Surveyed:
November 29, 1978

Registered Professional Engineer
and Land Surveyor
Fred B. Kerr Jr.
Fred B. Kerr Jr.

Certificate No.
3050

Scale: 1"=1320'



Vicinity Map for
AMOCO PRODUCTION COMPANY #2 JICARILLA APACHE TRIBAL 35
2110'FNL 1150'FWL Sec 2-T24N-R5W
RIO ARriba COUNTY, NEW MEXICO