

UNITED STATES  
DEPARTMENT OF THE INTERIOR  
GEOLOGICAL SURVEY

SUBMIT IN TRIPPLICATE\*  
(Other instructions on  
reverse side)

Form approved.  
Budget Bureau No. 42-R1425.

30-07-22422

APPLICATION FOR PERMIT TO DRILL, DEEPEN, OR PLUG BACK

1a. TYPE OF WORK DRILL ☒ DEEPEN ☐ PLUG BACK ☐

b. TYPE OF WELL  
OIL WELL ☒ GAS WELL ☐ OTHER ☐  
SINGLE ZONE ☒ MULTIPLE ZONE ☐

2. NAME OF OPERATOR  
Mobil Producing TX. & N.M. Inc.

3. ADDRESS OF OPERATOR  
Nine Greenway Plaza, Suite 2700; Houston, Texas 77046

4. LOCATION OF WELL (Report location clearly and in accordance with any State requirements.)  
At surface

m 940' FSL & 825' FWL, Sec. 27, T24N, R3W  
At proposed prod. zone

Same as surface

14. DISTANCE IN MILES AND DIRECTION FROM NEAREST TOWN OR POST OFFICE\*

50 miles Southeast of Farmington

15. DISTANCE FROM PROPOSED\* LOCATION TO NEAREST PROPERTY OR LEASE LINE, FT.  
(Also to nearest drlg. unit line, if any)  
3590' to lease line

16. NO. OF ACRES IN LEASE  
26,365.43

17. NO. OF ACRES ASSIGNED TO THIS WELL  
160

18. DISTANCE FROM PROPOSED LOCATION\* TO NEAREST WELL, DRILLING, COMPLETED, OR APPLIED FOR, ON THIS LEASE, FT.  
2369' West to Well #6

19. PROPOSED DEPTH  
8200'

20. ROTARY OR CABLE TOOLS  
Rotary

21. ELEVATIONS (Show whether DF, RT, GR, etc.)

7052'- Ground

22. APPROX. DATE WORK WILL START\*  
July 1, 1980

23. PROPOSED CASING AND CEMENTING PROGRAM

SIZE OF HOLE	SIZE OF CASING	WEIGHT PER FOOT	SETTING DEPTH	QUANTITY OF CEMENT
17-1/2"	13-3/8"	48# H-40	0-300'	1. Circulate to Surface
12-1/4"	8-5/8"	24# K-55	0-2500'>	2. Circulate to Surface
	8-5/8"	32# H-40	2500-3900'>	
7-7/8"	5-1/2"	15.5# K-55	0-7500'>	3. Circulate to 3800'
	5-1/2"	17# K-55	7500-8200'>	

Cementing Program

- Class A with 2% CaCl<sub>2</sub>
- Class H

- Class A with 6% gel tailed in with Neoprene

Mud Program

Depth	Type of Mud	Weight	Viscosity	pH	Water Loss
0-300'	Spud Mud	10.0#	----	--	----
300-8200'	Fresh Water Gel	9.0#	40	--	----

Blowout Preventer Program

See Attachment

Logging Program: Type IES  
Depth 3900'- T.D.  
Neutron Density Surface - T.D.

IN ABOVE SPACE DESCRIBE PROPOSED PROGRAM: If proposal is to deepen or plug back, give data on present productive zone and proposed new productive zone. If proposal is to drill or deepen directionally, give pertinent data on subsurface locations and measured and true vertical depths. Give blowout preventer program, if any.

24. SIGNED A. D. Bond A. D. Bond TITLE Engineering Coordinator II DATE May 19, 1980

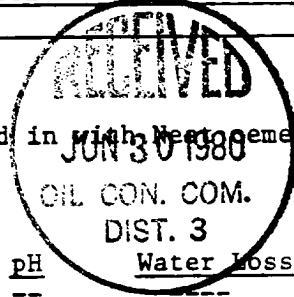
(This space for Federal or State office use)

PERMIT NO. \_\_\_\_\_ APPROVAL DATE \_\_\_\_\_

APPROVED BY \_\_\_\_\_ TITLE \_\_\_\_\_ DATE \_\_\_\_\_

CONDITIONS OF APPROVAL, IF ANY:

\*See Instructions On Reverse Side



NEW MEXICO OIL CONSERVATION COMMISSION  
WELL LOCATION AND ACREAGE DEDICATION PLAT

Form C-102  
Supersedes C-128  
Effective 1-1-85

All distances must be from the outer boundaries of the Section.

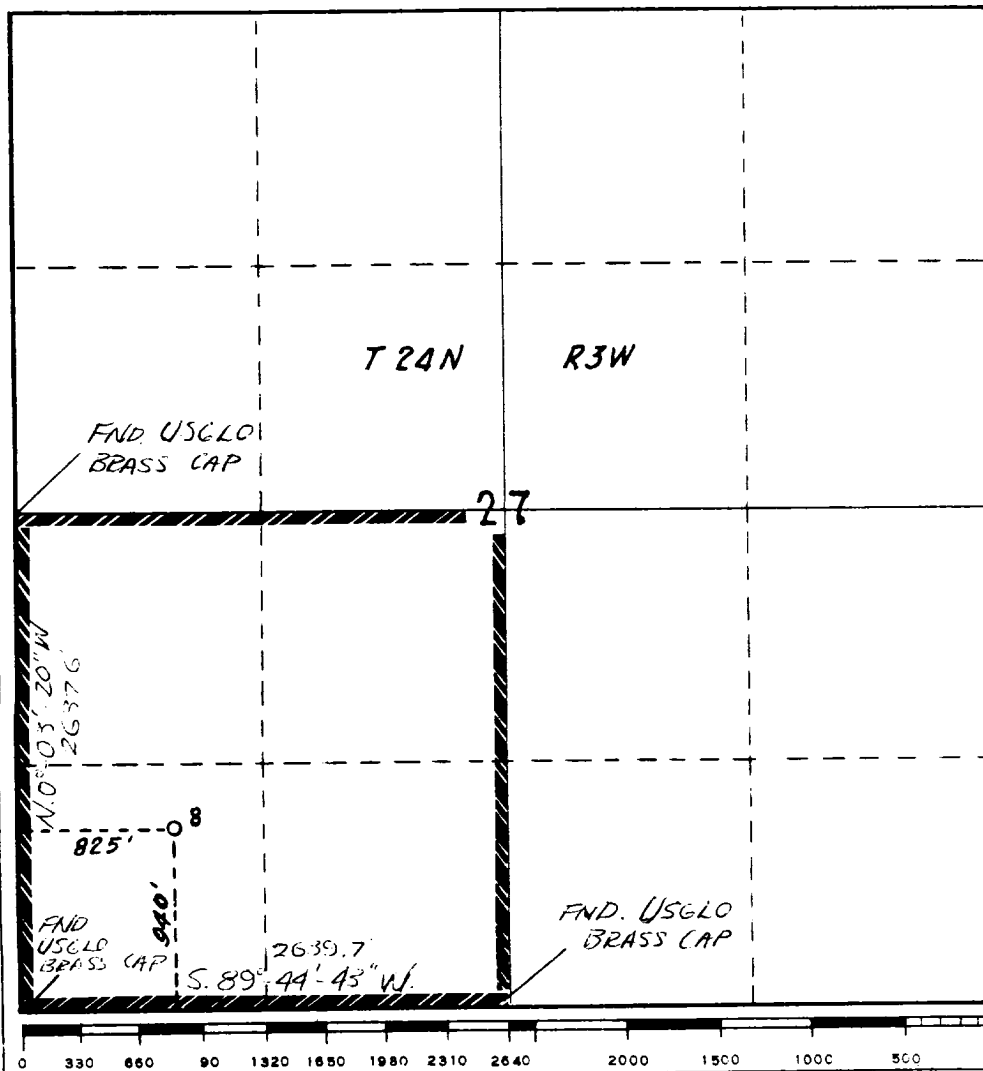
Operator <b>Mobil Producing TX. &amp; N.M. Inc.</b>		Lease <b>Lindrith B Unit</b>		Well No. <b>8</b>
Unit Letter <b>M</b>	Section <b>27</b>	Township <b>24N</b>	Range <b>3W</b>	County <b>Rio Arriba</b>
Actual Footage Location of Well: <b>940</b> feet from the <b>South</b> line and <b>825'</b> feet from the <b>West</b> line				
Ground Level Elev. <b>7052</b>	Producing Formation <b>Dakota</b>	Pool <b>Chacon-Dakota Associated</b>	Dedicated Acreage: <b>160</b> Acres	

1. Outline the acreage dedicated to the subject well by colored pencil or hachure marks on the plat below.
2. If more than one lease is dedicated to the well, outline each and identify the ownership thereof (both as to working interest and royalty).
3. If more than one lease of different ownership is dedicated to the well, have the interests of all owners been consolidated by communitization, unitization, force-pooling, etc?

☒ Yes ☐ No If answer is "yes," type of consolidation Unitization

If answer is "no," list the owners and tract descriptions which have actually been consolidated. (Use reverse side of this form if necessary.) \_\_\_\_\_

No allowable will be assigned to the well until all interests have been consolidated (by communitization, unitization, forced-pooling, or otherwise) or until a non-standard unit, eliminating such interests, has been approved by the Commission.



CERTIFICATION

I hereby certify that the information contained herein is true and complete to the best of my knowledge and belief.

*A. D. Bond*  
Name  
A.D. Bond  
Position **Regulatory Engineering Coordinator II**  
Company **Mobil Producing TX. & N.M. Inc.**  
Date **May 19, 1980**

I hereby certify that the well location shown on this plat was plotted from field notes of actual surveys made by me or under my supervision and that the same is true, and correct to the best of my knowledge and belief.

*H. A. Carson, Jr.*  
Date Surveyed  
**April 11, 1980**

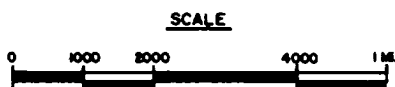
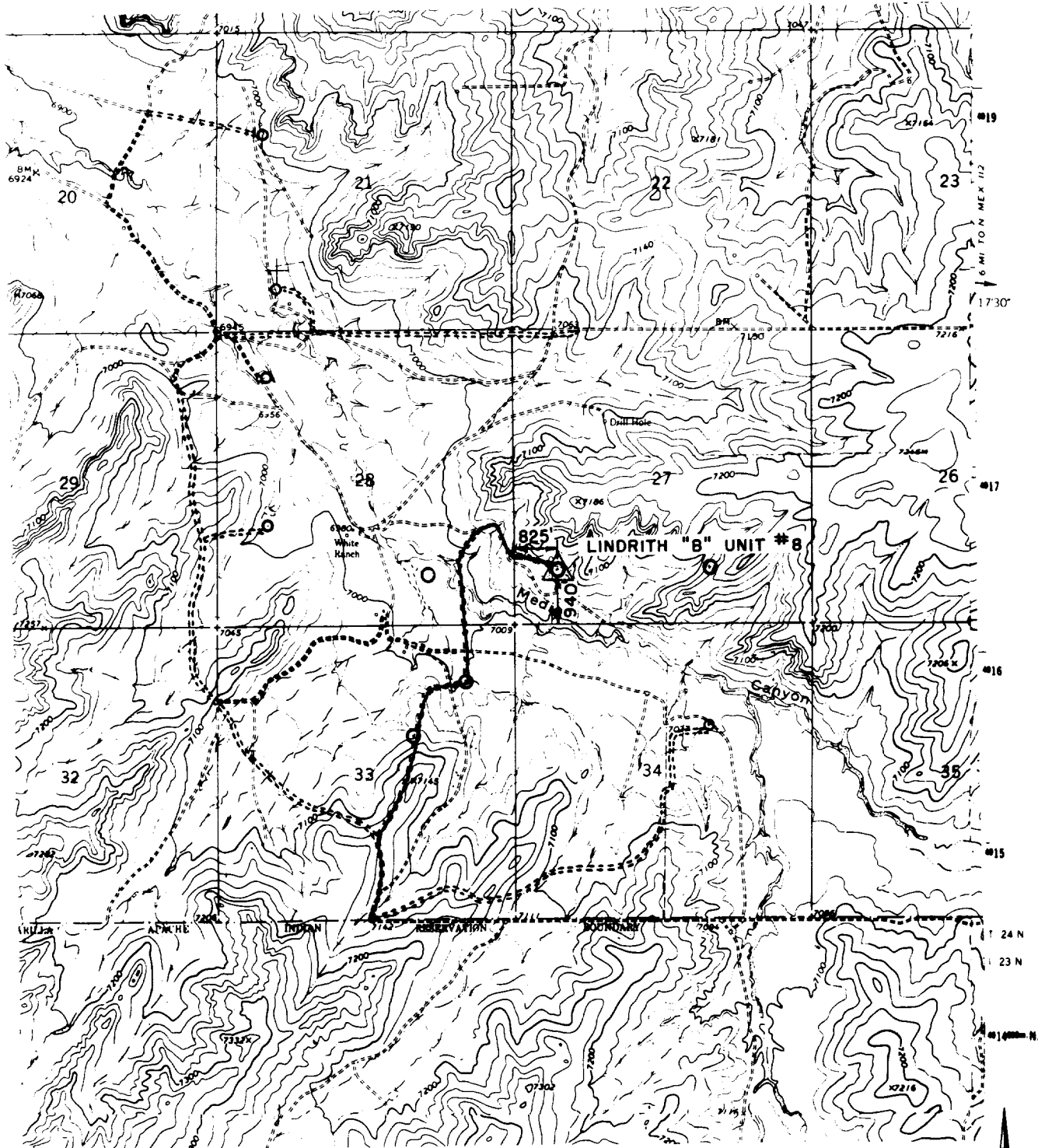
Registered Professional Engineer and/or Land Surveyor

**H. A. Carson, Jr.**

Certificate No.

**5063**

R-3-W



**Mobil Producing  
Texas & New Mexico Inc.**  
Houston, Texas

LINDRITH "B" UNIT  
VICINITY PLAT  
RIO ARRIBA CO., NEW MEXICO  
MAP "B"

Scale  
Date 4-29-80  
Drawn J.M.J.  
Checked  
Approved  
Revised