

UNITED STATES
DEPARTMENT OF THE INTERIOR

GEOLOGICAL SURVEY

APPLICATION FOR PERMIT TO DRILL, DEEPEN, OR PLUG BACK

1a. TYPE OF WORK

DRILL ☒DEEPEN ☐PLUG BACK ☐

b. TYPE OF WELL

OIL
WELL ☒GAS
WELL ☐

OTHER

SINGLE
ZONE ☒MULTIPLE
ZONE ☐

2. NAME OF OPERATOR

Dome Petroleum Corp.

3. ADDRESS OF OPERATOR

3600 Southside River Rd., Farmington, New Mexico 87401

4. LOCATION OF WELL (Report location clearly and in accordance with any State requirements.)

At surface 1750' FNL, 950' FEL

At proposed prod. zone

14. DISTANCE IN MILES AND DIRECTION FROM NEAREST TOWN OR POST OFFICE*

5 miles North of Lybrook Trading Post

15. DISTANCE FROM PROPOSED*

LOCATION TO NEAREST
PROPERTY OR LEASE LINE, FT.
(Also to nearest drlg. unit line, if any)

16. NO. OF ACRES IN LEASE

480

18. DISTANCE FROM PROPOSED LOCATION*

TO NEAREST WELL, DRILLING, COMPLETE,
OR APPLIED FOR, ON THIS LEASE, FT.

19. PROPOSED DEPTH

5650'

17. NO. OF ACRES ASSIGNED
TO THIS WELL

80

20. ROTARY OR CABLE TOOLS

Rotary

21. ELEVATIONS (Show whether DF, RT, GR, etc.)

6883' GR

22. APPROX. DATE WORK WILL START*

January 15, 1982

PROPOSED CASING AND CEMENTING PROGRAM

SIZE OF HOLE	SIZE OF CASING	WEIGHT PER FOOT	SETTING DEPTH	QUANTITY OF CEMENT
12 1/4"	8 5/8"	24#	200'	200 Sacks
7 7/8"	4 1/2"	10.5#	5650'	1100 Sacks

Move in rotary tools. Drill 12 1/4" hole to 200'. Set 200' new 8 5/8", 24#, K55 Casing. Cement with 200 sacks Class "B" Cement with 2% CaCl. Wait on cement 12 hours. Install 10" 900 Series B.O.P. Test to 500 psi before drilling out from under surface pipe. Check pipe rams daily & blind rams on trips. Drill 7 7/8" hole to T.D. The geological name of the surface bearing. Pertinent formation tops are estimated as Ojo Alamo 1420'; Fruitland 1543'; Pictured Cliff 2005'; Chacra 2465'; Menefee 3050'; Cliffhouse 3573'; Point Lookout 4345'; Mancos 4555' and Gallup 5303'. Mud system will be low solids non-dispersed. Mud weight 8.8-9.2 #/Gal., F.L. 8-10cc, and viscosity 30-50 sec./quart. No abnormal temperatures or pressures are anticipated. Logging program will be DIL, FDC/CNL with Gamma Ray and Caliper. Drill stem test will be taken where necessary for evaluation. If productive 4 1/2", 10.5#, K55 Casing will be run and cemented with 900 sacks 65/35 Pozmix with 6% Gel and 10# Gilsonite/sx. Followed with 200 sx. Class "B" Cement with 10% salt. Drilling should require approximately 15 days.

IN ABOVE SPACE DESCRIBE PROPOSED PROGRAM: If proposal is to deepen or plug back, give data on present productive zone and proposed new productive zone. If proposal is to drill or deepen directionally, give pertinent data on subsurface locations and measured and true vertical depths. Give blowout preventer program, if any.

24.

SIGNED

H. D. Holdingsworth
H. D. Holdingsworth

TITLE Area Production Supt.

DATE December 15, 1981

(This space for Federal or State office use)

PERMIT NO.

APPROVAL DATE

APPROVED BY

TITLE

CONDITIONS OF APPROVAL, IF ANY:

APPROVED
AS AMENDED

FEB 5 1982

James F. Sims
for JAMES F. SIMS
DISTRICT ENGINEER

All distances must be from the outer boundaries of the Section.

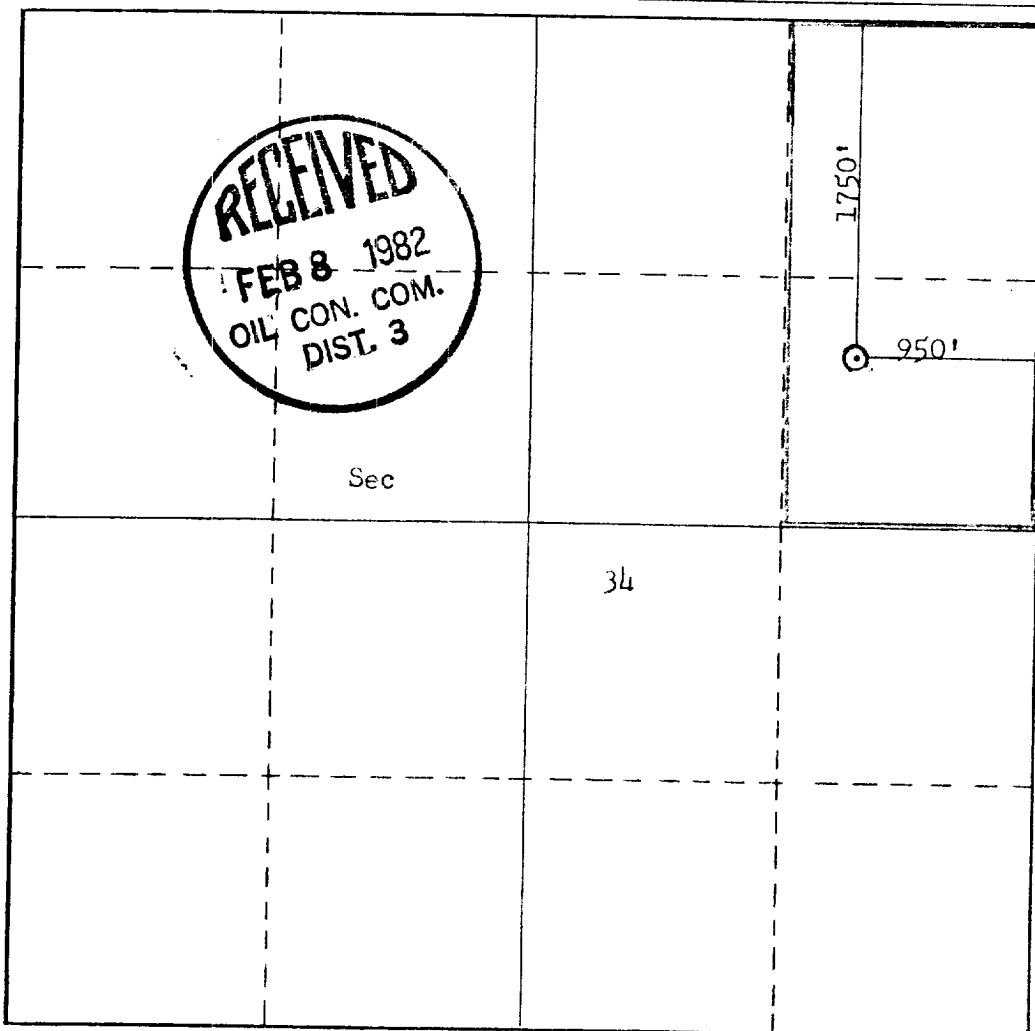
Operator Dome Petroleum Corp.			Lease Dome Federal 34-24-7			Well No. 3
Unit Letter H	Section 34	Township 24N	Range 7W	County Rio Arriba		
Actual Footage Location of Well:						
1750 feet from the North line and 950 feet from the East line						
Ground Level Elev. 6883	Producing Formation Gallup		Pool Escrito-Gallup Ext.		Dedicated Acreage: 80 Acres	

1. Outline the acreage dedicated to the subject well by colored pencil or hachure marks on the plat below.
2. If more than one lease is dedicated to the well, outline each and identify the ownership thereof (both as to working interest and royalty).
3. If more than one lease of different ownership is dedicated to the well, have the interests of all owners been consolidated by communitization, unitization, force-pooling, etc?

☐ Yes ☐ No If answer is "yes," type of consolidation _____

If answer is "no," list the owners and tract descriptions which have actually been consolidated. (Use reverse side of this form if necessary.) _____

No allowable will be assigned to the well until all interests have been consolidated (by communitization, unitization, forced-pooling, or otherwise) or until a non-standard unit, eliminating such interests, has been approved by the Commission.



CERTIFICATION

I hereby certify that the information contained herein is true and complete to the best of my knowledge and belief.

H. D. Hollingsworth
Name

H. D. Hollingsworth
Position

Area Production Supt.
Company

Dome Petroleum Corp.
Date

December 15, 1981

I hereby certify that the well location shown on this plat was plotted from field notes of actual surveys made by me or under my supervision, and that the same is true and correct to the best of my knowledge and belief.

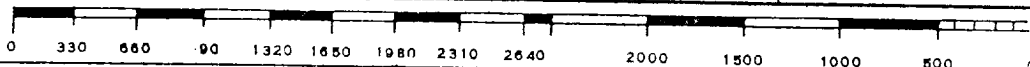
Date Surveyed

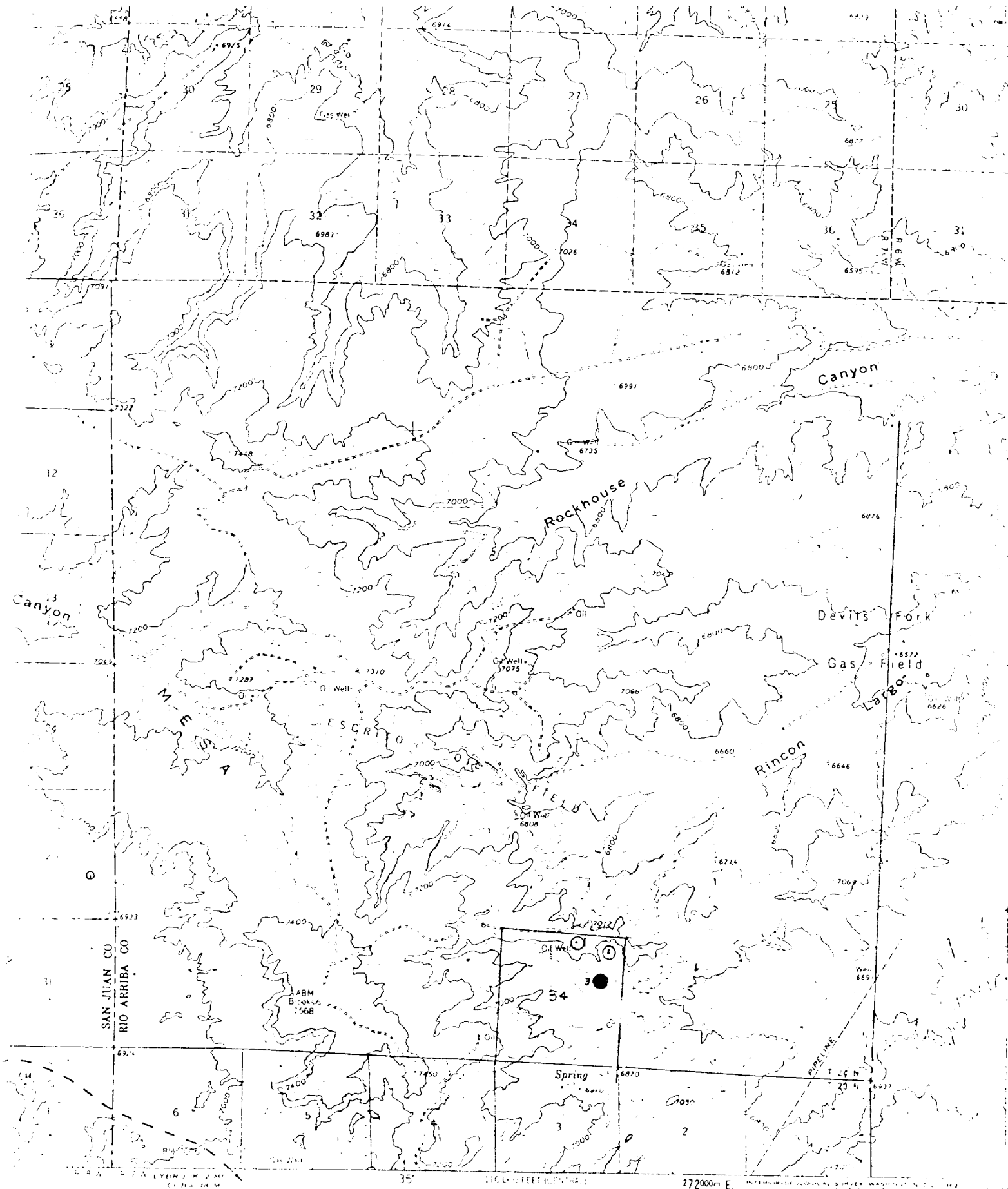
December 15, 1981
Registered Professional Engineer
and/or Land Surveyor

Fred B. Kerr Jr.
Fred B. Kerr Jr.

Certificate No.

3950





SCALE 1:62500

4 M. ES

272000m E

Vicinity Map for
 Dome Petroleum Corp. #3 Dome Federal 34-24-7
 1750'FNL 950'FEL Sec. 34-T24N-R7W
 Rio Arriba County New Mexico

ROAD CLASSIFICATION

Light duty
 Unimproved dirt