

UNITED STATES
DEPARTMENT OF THE INTERIOR
GEOLOGICAL SURVEY

APPLICATION FOR PERMIT TO DRILL, DEEPEN, OR PLUG BACK

1a. TYPE OF WORK

DRILL ☒

DEEPEN ☐

PLUG BACK ☐

b. TYPE OF WELL

OIL
WELL ☐

GAS
WELL ☒

OTHER

SINGLE
ZONE ☐

MULTIPLE
ZONE ☒

2. NAME OF OPERATOR

CONOCO INC.

3. ADDRESS OF OPERATOR

P. O. Box 460, Hobbs, N.M. 88240

4. LOCATION OF WELL (Report location clearly and in accordance with any State requirements*)

At surface

1500' FNL & 1650' FWL

At proposed prod. zone

14. DISTANCE IN MILES AND DIRECTION FROM NEAREST TOWN OR POST OFFICE*

EL PASO, N. M.

15. DISTANCE FROM PROPOSED*

LOCATION TO NEAREST
PROPERTY OR LEASE LINE, FT.
(Also to nearest drlg. unit line, if any)

18. DISTANCE FROM PROPOSED LOCATION*

TO NEAREST WELL, DRILLING, COMPLETED,
OR APPLIED FOR, ON THIS LEASE, FT.

21. ELEVATIONS (Show whether DF, RT, GR, etc.)

7370' GR

23.

PROPOSED CASING AND CEMENTING PROGRAM

SIZE OF HOLE	SIZE OF CASING	WEIGHT PER FOOT	SETTING DEPTH	QUANTITY OF CEMENT
12 1/2"	9 5/8"	36 #	250'	135 cu - circulate
8 3/4"	7"	23 #	6250'	600 cu - 2500' ↓ Cove up alone

It is proposed to drill a straight hole to a TD of 6250' and complete it as a
Pictured Cliffs / Mesaverde dual gas well.

See attachments for 10 point well plan and 13 point Surface Use Plan.

IN ABOVE SPACE DESCRIBE PROPOSED PROGRAM: If proposal is to deepen or plug back, give data on present productive zone and proposed new productive zone. If proposal is to drill or deepen directionally, give pertinent data on subsurface locations and measured and true vertical depths. Give blowout preventer program, if any.

24.

SIGNED

Wm. B. Butterfield

TITLE Administrative Supervisor

DATE April 26, 1982

(This space for Federal or State office use)

PERMIT NO.

APPROVAL DATE

APPROVED BY

TITLE

CONDITIONS OF APPROVAL, IF ANY:

APPROVED
AS AMENDED

APR 20 1982

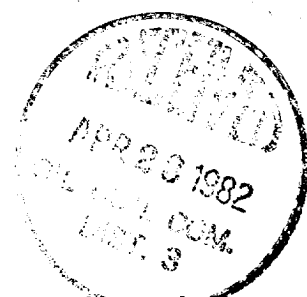
James F. Ellis
FOR JAMES F. ELLIS
DISTRICT ENGINEER

*See Instructions On Reverse Side

NMOC

MSB
G1
F12
61

oh 2



NEW MEXICO OIL CONSERVATION COMMISSION
WELL LOCATION AND ACREAGE DEDICATION PLAT

Form C-102
Supersedes C-128
Effective 1-1-65

All distances must be from the outer boundaries of the Section.

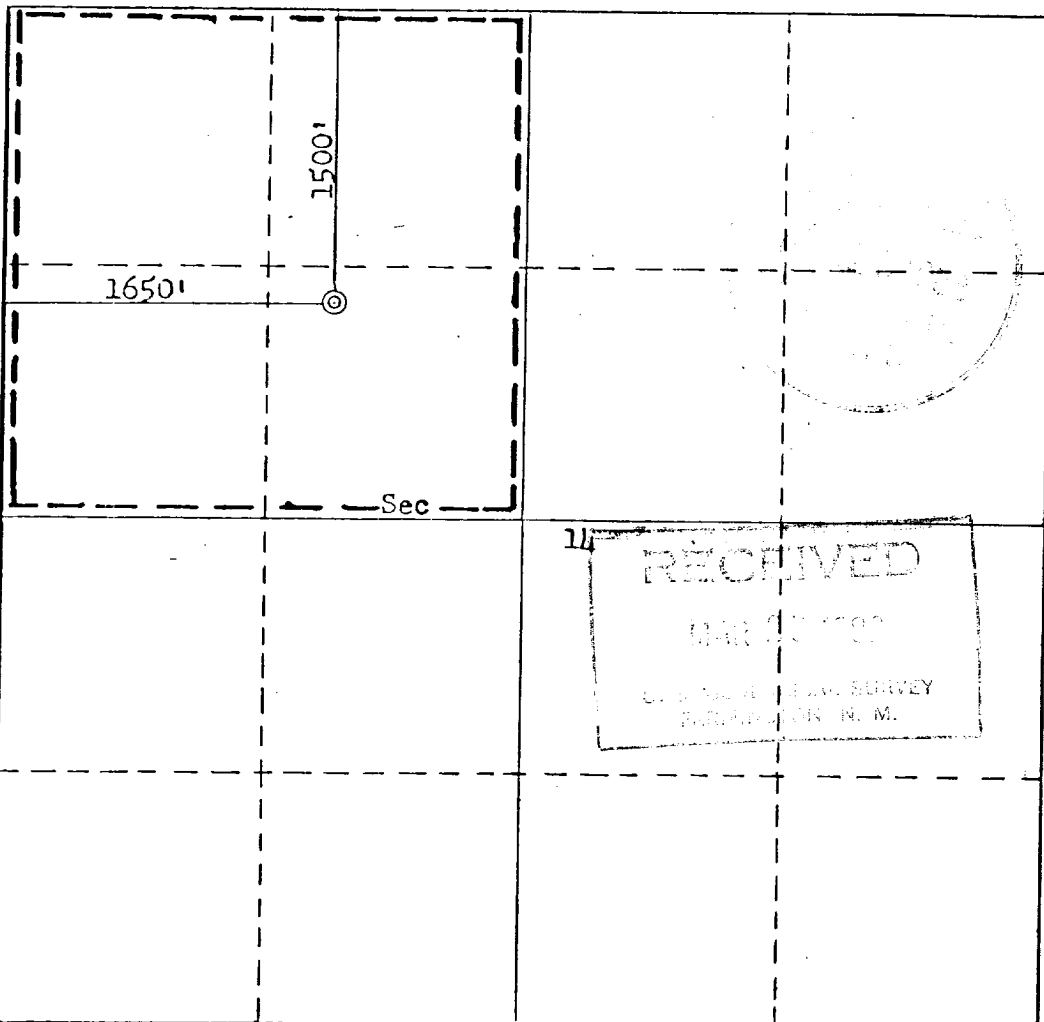
Operator CONTINENTAL OIL COMPANY			Lease AXI Apache M		Well No. 6
Unit Letter F	Section 14	Township 25N	Range 4W	County Rio Arriba	
Actual Footage Location of Well: 1500 feet from the North line and 1650 feet from the West line					
Ground Level Elev. 7370	Producing Formation Pictured Cliffs		Pool South Blanco Pictured Cliffs	Dedicated Acreage: 160 Acres	

1. Outline the acreage dedicated to the subject well by colored pencil or hachure marks on the plat below.
2. If more than one lease is dedicated to the well, outline each and identify the ownership thereof (both as to working interest and royalty).
3. If more than one lease of different ownership is dedicated to the well, have the interests of all owners been consolidated by communitization, unitization, force-pooling, etc?

☐ Yes ☐ No If answer is "yes," type of consolidation _____

If answer is "no," list the owners and tract descriptions which have actually been consolidated. (Use reverse side of this form if necessary.) _____

No allowable will be assigned to the well until all interests have been consolidated (by communitization, unitization, forced-pooling, or otherwise) or until a non-standard unit, eliminating such interests, has been approved by the Commission.



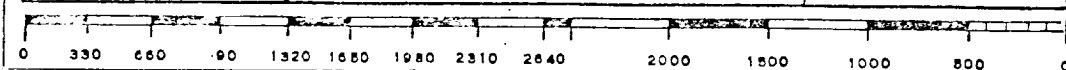
CERTIFICATION

I hereby certify that the information contained herein is true and complete to the best of my knowledge and belief.

Name
Wm A. Anttief
Position
Administrative Supervisor
Company
Conoco Inc.
Date
March 26, 1982

I hereby certify that the well location shown on this plat was plotted from field notes of actual surveys made by me or under my supervision, and that the same is true and correct to the best of my knowledge and belief.

Date Surveyed
January 10, 1978
Registered Professional Engineer and/or Land Surveyor
Fred B. Kerr Jr.
Certificate No.
3950



NEW MEXICO OIL CONSERVATION COMMISSION
WELL LOCATION AND ACREAGE DEDICATION PLAT

Form C-102
Supersedes C-128
Effective 1-1-65

All distances must be from the outer boundaries of the Section.

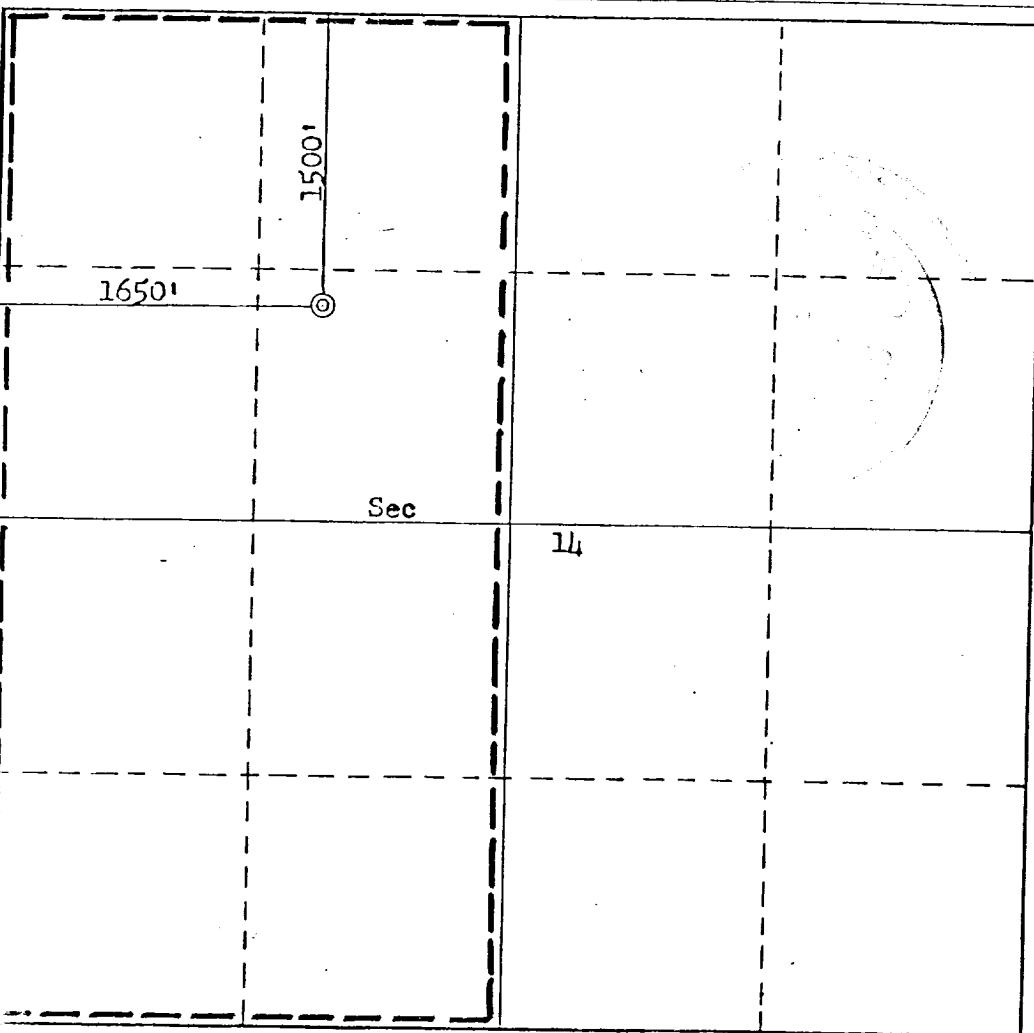
Operator CONTINENTAL OIL COMPANY			Lease AXI Apache M		Well No. 6
Unit Letter F	Section 14	Township 25N	Range 4W	County Rio Arriba	
Actual Footage Location of Well: 1500 feet from the North line and 1650 feet from the West line Ground Level Elev. 7370 Producing Formation Mesaverde Pool San Blanco Mesaverde Dedicated Acreage: W 320 Acres					

1. Outline the acreage dedicated to the subject well by colored pencil or hachure marks on the plat below.
2. If more than one lease is dedicated to the well, outline each and identify the ownership thereof (both as to working interest and royalty).
3. If more than one lease of different ownership is dedicated to the well, have the interests of all owners been consolidated by communitization, unitization, force-pooling, etc?

☐ Yes ☐ No If answer is "yes," type of consolidation _____

If answer is "no," list the owners and tract descriptions which have actually been consolidated. (Use reverse side of this form if necessary.) _____

No allowable will be assigned to the well until all interests have been consolidated (by communitization, unitization, forced-pooling, or otherwise) or until a non-standard unit, eliminating such interests, has been approved by the Commission.



CERTIFICATION

I hereby certify that the information contained herein is true and complete to the best of my knowledge and belief.

Name Wm. P. Butler
 Position Administrative Supervisor
 Company Conoco Inc.
 Date March 26, 1982

I hereby certify that the well location shown on this plat was plotted from field notes of actual surveys made by me or under my supervision, and that the same is true and correct to the best of my knowledge and belief.

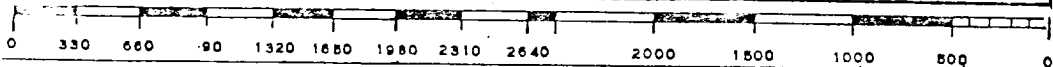
Date Surveyed January 10, 1978

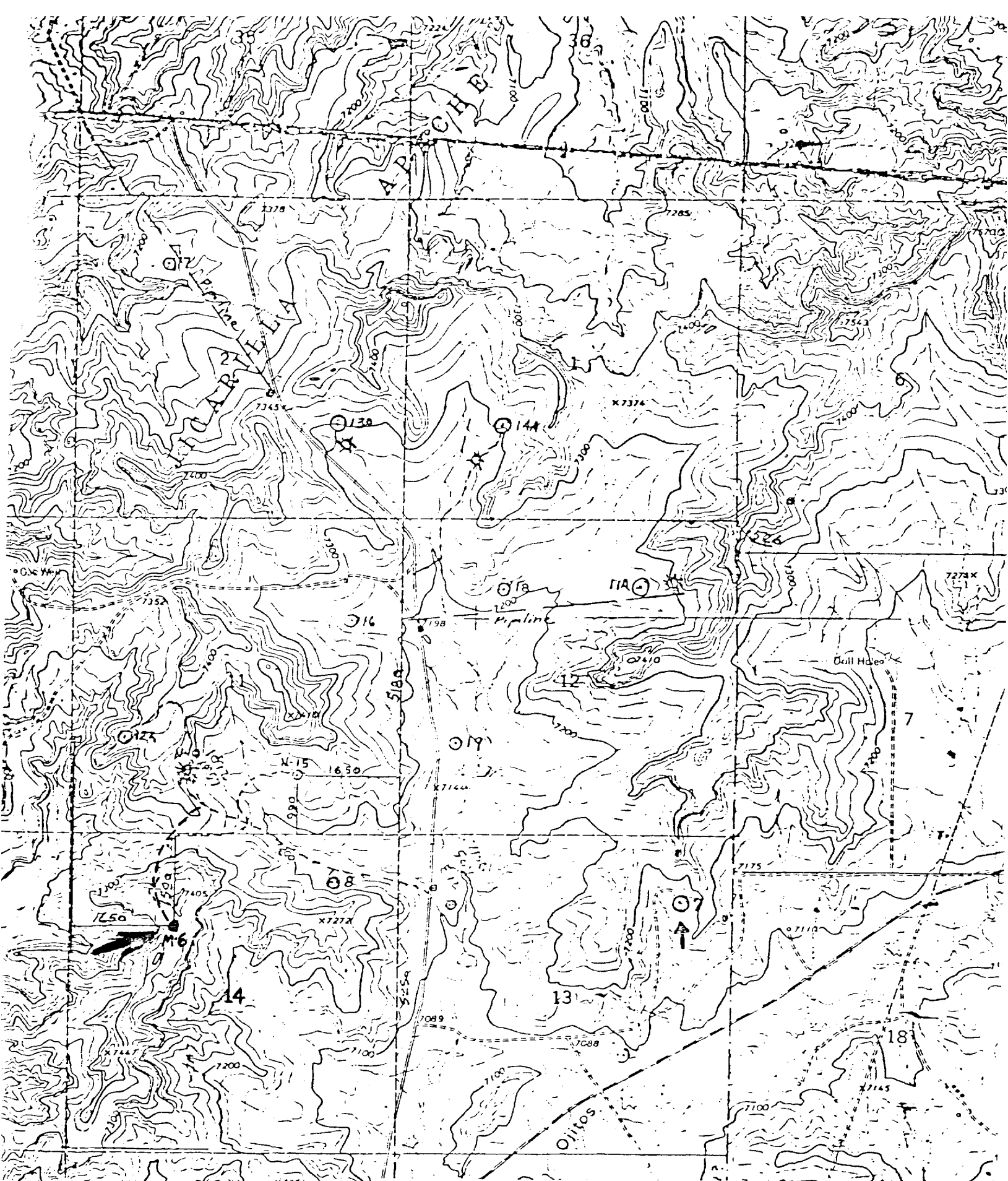
Registered Professional Engineer and/or Land Surveyor

Fred B. Kerr Jr.
 Fred B. Kerr Jr.

Certificate No.

3950





Vicinity Map for
 CONTINENTAL OIL CO. #6 AXI APACHE "M"
 150° FNL 150° FNL Sec 14-T25N-RLW
 RIO ARriba COUNTY, NEW MEXICO

Exhibit B