

UNITED STATES  
DEPARTMENT OF THE INTERIOR  
GEOLOGICAL SURVEY

## APPLICATION FOR PERMIT TO DRILL, DEEPEN, OR PLUG BACK

1a. TYPE OF WORK DRILL ☒ DEEPEN ☐ PLUG BACK ☐

b. TYPE OF WELL OIL WELL ☒ GAS WELL ☐ OTHER ☐ SINGLE ZONE ☒ MULTIPLE ZONE ☐

2. NAME OF OPERATOR  
Merrion Oil & Gas Corporation

3. ADDRESS OF OPERATOR  
P. O. Box 1017, Farmington, New Mexico 87401

4. LOCATION OF WELL (Report location clearly and in accordance with any State requirements.)  
At surface  
At proposed prod. zone 950 FSL & 1800 FWL  
Same

10. FIELD AND POOL, OR WILDCAT  
Devils Fork Gallup

11. SEC., T., R., M., OR BLK. AND SURVEY OR AREA  
Sec. 22, T25N, R6W

12. COUNTY OR PARISH  
Rio Arriba

13. STATE  
New Mexico

14. DISTANCE IN MILES AND DIRECTION FROM NEAREST TOWN OR POST OFFICE\*  
12 miles NE of Lybrook

15. DISTANCE FROM PROPOSED\* LOCATION TO NEAREST PROPERTY OR LEASE LINE, FT. (Also to nearest drlg. unit line, if any)  
950'

16. NO. OF ACRES IN LEASE  
1920

17. NO. OF ACRES ASSIGNED TO THIS WELL  
160

18. DISTANCE FROM PROPOSED LOCATION\* TO NEAREST WELL, DRILLING, COMPLETED, OR APPLIED FOR, ON THIS LEASE, FT.  
1830'

19. PROPOSED DEPTH  
6300'

20. ROTARY OR CABLE TOOLS  
Rotary

21. ELEVATIONS (Show whether DF, RT, GR, etc.)  
6689' GL 6680

22. APPROX. DATE WORK WILL START\*  
April, 1982

## 23. PROPOSED CASING AND CEMENTING PROGRAM

| SIZE OF HOLE | SIZE OF CASING | WEIGHT PER FOOT | SETTING DEPTH | QUANTITY OF CEMENT |
|--------------|----------------|-----------------|---------------|--------------------|
| 12-1/4"      | 8-5/8"         | 20 #/ft.        | 200'          | 175 sx.            |
| 7-7/8"       | 4-1/2"         | 10.5 #/ft.      | 6300'         | 875 sx.            |

Propose to drill 12-1/4" hole to 200 ft., set 200 ft. of 8-5/8" 20 #/ft. new surface casing w/175 sx Class 'B' 2% CACL<sub>2</sub>. Will drill 7-7/8" hole to TD and run open hole logs. If logs appear productive will run 4-1/2", K-55, 10.5 #/ft. new casing to TD and 2 stage cement 1st stage 175 sx Class 'H' 2% Gel to cover Gallup. Stage tool below Point Lookout @ 5020' est. 2nd stage 600 sx Class 'B' w/2% D-79 followed by 100 sx Class 'H' 2% Gel. Will bring cement above Ojo Alamo. Drilling mud will be low water loss gel, fresh water, starch. Will perforate and frac as necessary. Blowout prevention equipment will be 10" 900 series double ram.

## Estimated Tops:

|                 |      |            |      |
|-----------------|------|------------|------|
| Ojo Alamo       | 2120 | Mesa Verde | 4135 |
| Kirtland        | 2190 | Mancos     | 5020 |
| Fruitland       | 2405 | Gallup     | 5903 |
| Pictured Cliffs | 2570 |            |      |

IN ABOVE SPACE DESCRIBE PROPOSED PROGRAM: If proposal is to deepen or plug back, give data on present productive zone and proposed new productive zone. If proposal is to drill or deepen directionally, give pertinent data on subsurface locations and measured and true vertical depths. Give blowout preventer program, if any.

24. SIGNED [Signature] TITLE President DATE 3/3/82  
(This space for Federal or State office use)

PERMIT NO. \_\_\_\_\_

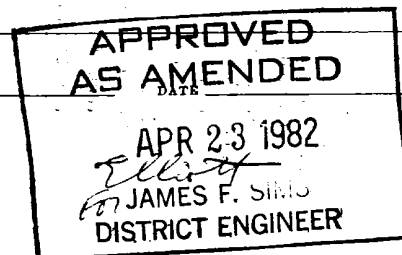
APPROVED BY \_\_\_\_\_

CONDITIONS OF APPROVAL, IF ANY:

Gas not dedicated  
Hole C104 for cementization

17

Merrion



All distances must be from the outer boundaries of the Section.

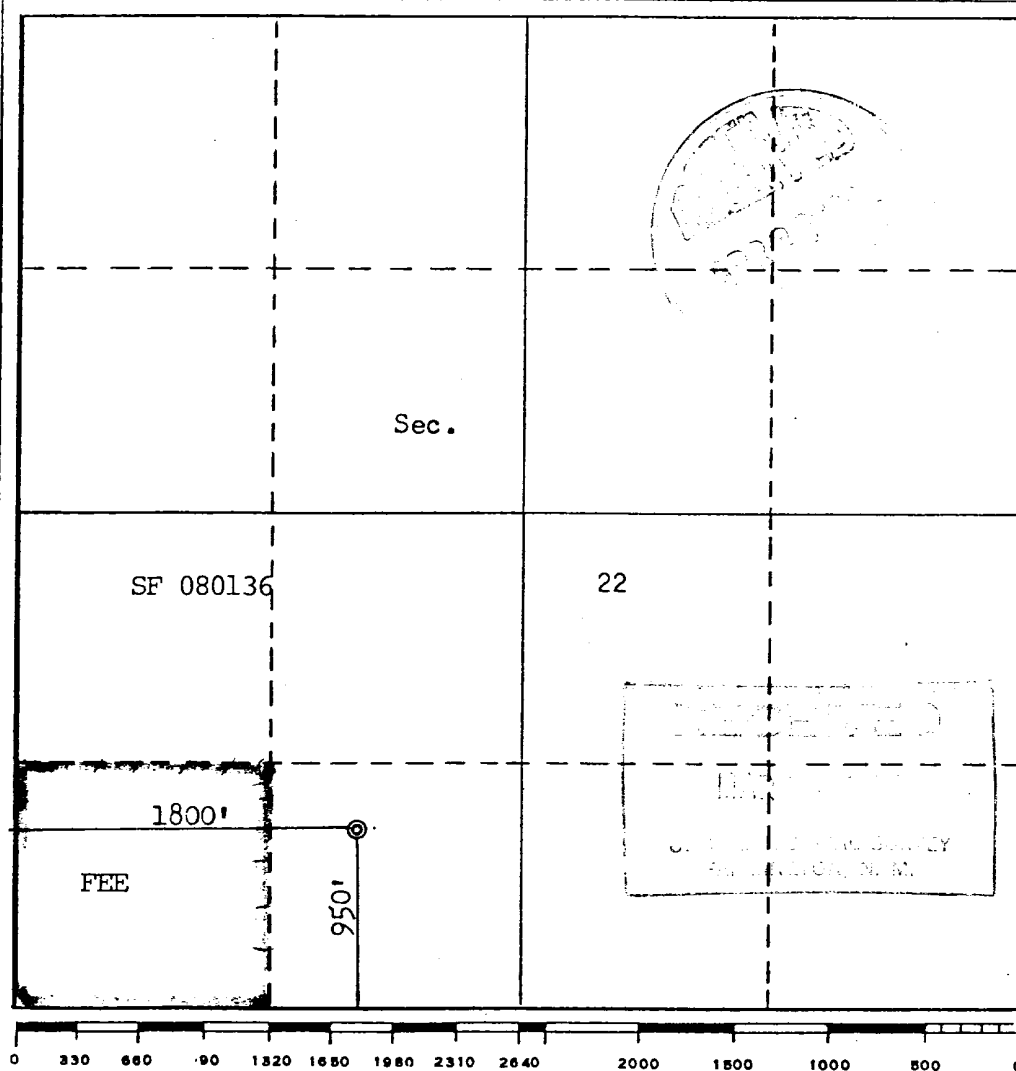
|   |                                      |                        |                                   |                             |  |
|---|--------------------------------------|------------------------|-----------------------------------|-----------------------------|--|
| Operator<br><b>MERRION OIL &amp; GAS CORP.</b>  |                                      |                        | Lease<br><b>Gonzales Com</b>      |                             | Well No.<br><b>No. 1</b>               |
| Unit Letter<br><b>N</b>   | Section<br><b>22</b>                 | Township<br><b>25N</b> | Range<br><b>6W</b>                | County<br><b>Rio Arriba</b> |  |
| Actual Footage Location of Well:<br><b>950</b> feet from the <b>South</b> line and <b>1800</b> feet from the <b>West</b> line |                                      |                        |                                   |                             |  |
| Ground Level Elev.<br><b>6680</b>   | Producing Formation<br><b>Gallup</b> |                        | Pool<br><b>Devils Fork Gallup</b> |                             | Dedicated Acreage:<br><b>160</b> Acres |

1. Outline the acreage dedicated to the subject well by colored pencil or hachure marks on the plat below.
2. If more than one lease is dedicated to the well, outline each and identify the ownership thereof (both as to working interest and royalty).
3. If more than one lease of different ownership is dedicated to the well, have the interests of all owners been consolidated by communitization, unitization, force-pooling, etc?

☒ Yes ☐ No If answer is "yes," type of consolidation Will be communitized

If answer is "no," list the owners and tract descriptions which have actually been consolidated. (Use reverse side of this form if necessary.)

No allowable will be assigned to the well until all interests have been consolidated (by communitization, unitization, forced-pooling, or otherwise) or until a non-standard unit, eliminating such interests, has been approved by the Commission.



CERTIFICATION

I hereby certify that the information contained herein is true and complete to the best of my knowledge and belief.

*J. Gregory Merrion*  
Name

J. Gregory Merrion

Position

President

Company

Merrion Oil & Gas Corp.

Date

3/3/82

I hereby certify that the well location shown on this plat was plotted from field notes of actual surveys made by me or under my supervision, and that the same is true and correct to the best of my knowledge and belief.

Date Surveyed

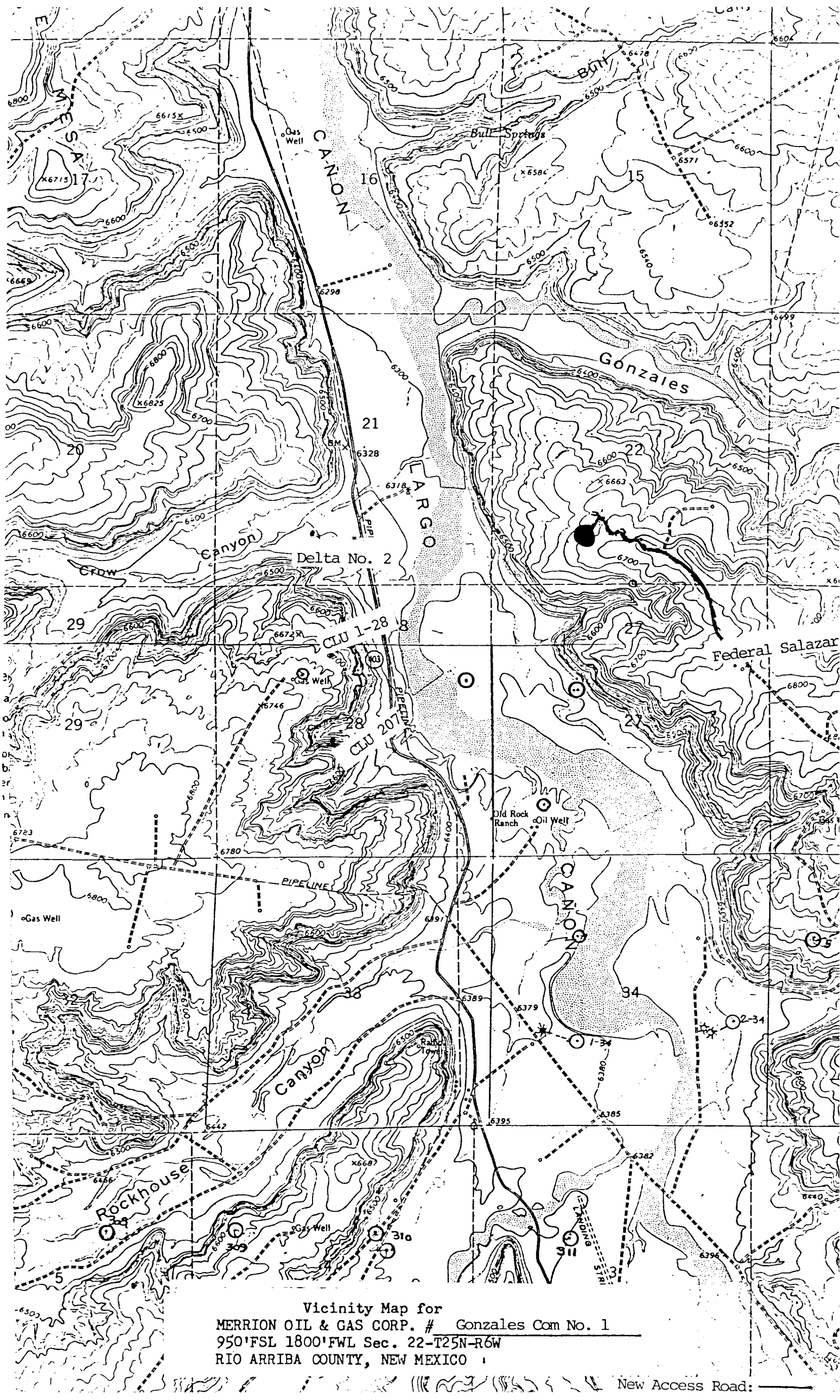
March 1, 1982

Registered Professional Engineer and/or Land Surveyor

*Fred B. Kerr Jr.*  
Fred B. Kerr Jr.

Certificate No.

3950



Vicinity Map for  
MERRION OIL & GAS CORP. # Gonzales Com No. 1  
950'FSL 1800'FWL Sec. 22-T25N-R6W  
RIO ARRIBA COUNTY, NEW MEXICO

New Access Road: ———