

UNITED STATES
DEPARTMENT OF THE INTERIOR
GEOLOGICAL SURVEY

30-039-23090

5. LEASE DESIGNATION AND SERIAL NO.

SF 090971-079071

6. IF INDIAN, ALLOTTEE OR TRIBAL NAME

7. UNIT AGREEMENT NAME

8. FARM OR LEASE NAME

Canyon Largo Unit

9. WELL NO.

315

10. FIELD AND POOL, OR WILDCAT

Devils Fork Gallup Area

11. SEC., T., R., M., OR BLK. AND SURVEY OR AREA

Sec. 21, T25N, R6W

12. COUNTY OR PARISH

Rio Arriba

13. STATE

New Mexico

1a. TYPE OF WORK

DRILL ☒DEEPEN ☐PLUG BACK ☐

b. TYPE OF WELL

OIL
WELL ☒GAS
WELL ☐

OTHER

SINGLE
ZONE ☐MULTIPLE
ZONE ☐

2. NAME OF OPERATOR

Merrion Oil & Gas Corporation

3. ADDRESS OF OPERATOR

P. O. Box 1017, Farmington, New Mexico 87401

4. LOCATION OF WELL (Report location clearly and in accordance with any State requirements.)

At surface 1800' FNL and 830' FWL

At proposed prod. zone Same

14. DISTANCE IN MILES AND DIRECTION FROM NEAREST TOWN OR POST OFFICE*

12 miles NE of Counselor, New Mexico

15. DISTANCE FROM PROPOSED*

LOCATION TO NEAREST
PROPERTY OR LEASE LINE, FT.
(Also to nearest drlg. unit line, if any)

830'

16. NO. OF ACRES IN LEASE

560

17. NO. OF ACRES ASSIGNED

160

18. DISTANCE FROM PROPOSED LOCATION*

TO NEAREST WELL, DRILLING, COMPLETED,
OR APPLIED FOR, ON THIS LEASE, FT.

2800'

19. PROPOSED DEPTH

6375

20. ROTARY OR CABLE TOOLS

Rotary

21. ELEVATIONS (Show whether DF, RT, GR, etc.)

6628' G.R.

22. APPROX. DATE WORK WILL START*

Summer, 1982

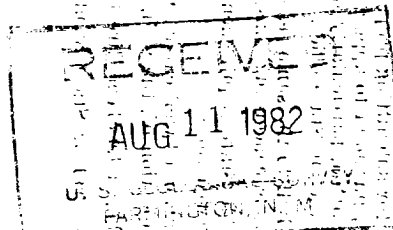
23. PROPOSED CASING AND CEMENTING PROGRAM

SIZE OF HOLE	SIZE OF CASING	WEIGHT PER FOOT	SETTING DEPTH	QUANTITY OF CEMENT
12-1/4"	8-5/8"	20 #/ft.	200	175 sx.
7-7/8"	4-1/2"	10.5 #/ft.	6375	875 sx.

Propose to drill 12-1/4" hole to 200 ft., set 200 ft. of 8-5/8" 20 #/ft. new surface casing w/175 sx Class 'B' 2% CACL₂. Will drill 7-7/8" hole to TD and run open hole logs. If logs appear productive will run 4-1/2", K-55, 10.5 #/ft. new casing to TD and 2 stage cement. 1st stage 175 sx Class 'G' 2% gel to cover Gallup. Stage tool below Point Lookout @ 5175' est. 2nd stage 600 sx Class 'B' w/2% D-79 followed by 100 sx Class 'H' 2% gel. Will bring cement above Ojo Alamo. Drilling mud will be low water loss gel, fresh water, starch. Will perforate and frac as necessary. Blowout prevention equipment will be 10" 900 series double ram.

ESTIMATED TOPS

San Jose	Surface
Ojo Alamo	2025'
Pictured Cliffs	2475'
Mesa Verde	4100'
Gallup	5966'



IN ABOVE SPACE DESCRIBE PROPOSED PROGRAM: If proposal is to deepen or plug back, give data on present productive zone and proposed new productive zone. If proposal is to drill or deepen directionally, give pertinent data on subsurface locations and measured and true vertical depths. Give blowout prevention program, if any.

24. SIGNED [Signature] TITLE Operations Manager

DATE 7/19/82

(This space for Federal or State office use)

PERMIT NO.

APPROVAL DATE

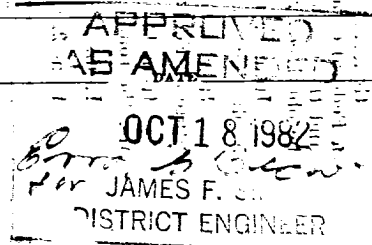
APPROVED BY

TITLE

CONDITIONS OF APPROVAL, IF ANY:

ok 2

NM000



All distances must be from the outer boundaries of the Section.

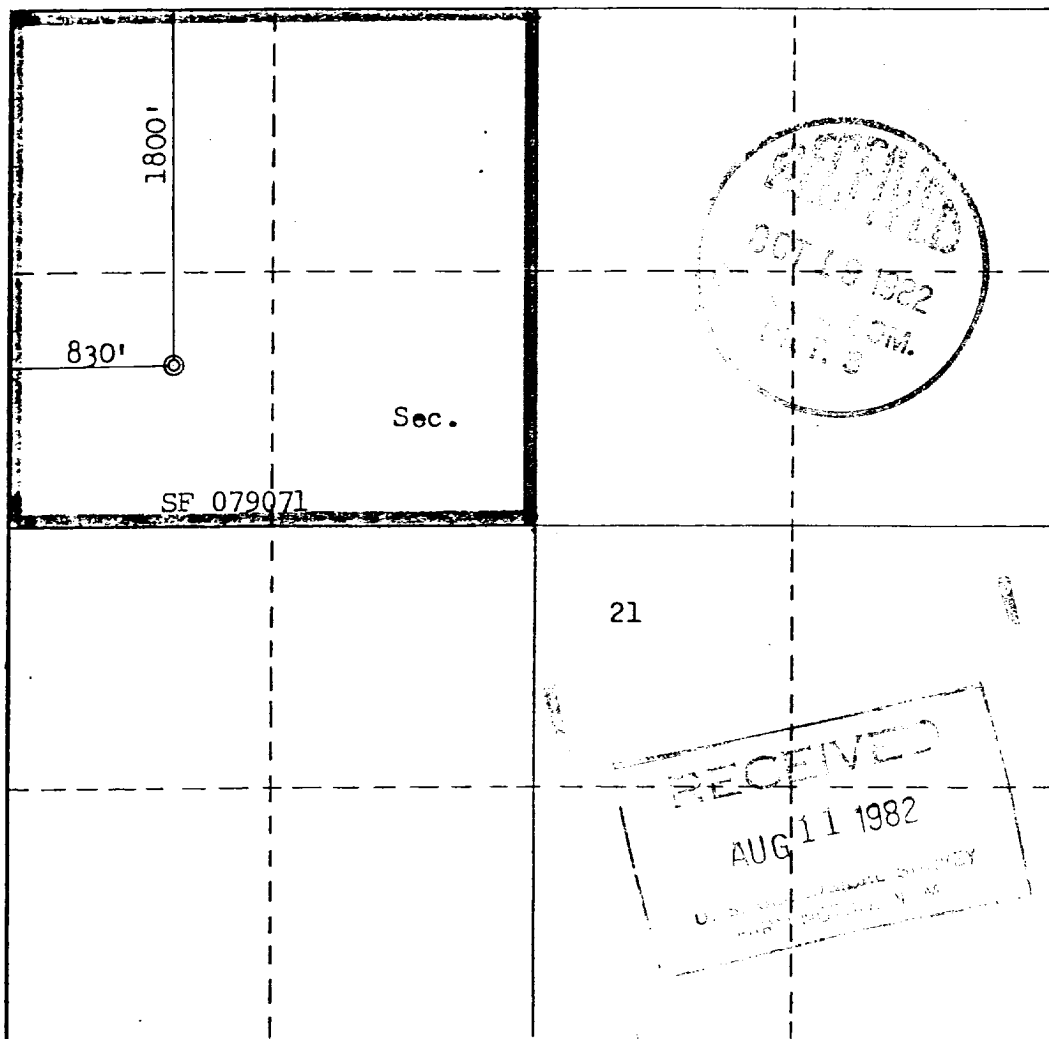
Operator MERRION OIL & GAS CORPORATION			Lease CANYON LARGO UNIT		Well No. 317
Unit Letter E	Section 21	Township 25N	Range 6W	County Rio Arriba	
Actual Footage Location of Well:					
1800 feet from the North		line and	830 feet from the West	line	
Ground Level Elev. 6628	Producing Formation Gallup	Pool Devils Fork Gallup Assoc. Ext.		Dedicated Acreage: 160	Acres

1. Outline the acreage dedicated to the subject well by colored pencil or hachure marks on the plat below.
2. If more than one lease is dedicated to the well, outline each and identify the ownership thereof (both as to working interest and royalty).
3. If more than one lease of different ownership is dedicated to the well, have the interests of all owners been consolidated by communitization, unitization, force-pooling, etc?

☐ Yes ☐ No If answer is "yes," type of consolidation _____

If answer is "no," list the owners and tract descriptions which have actually been consolidated. (Use reverse side of this form if necessary.) _____

No allowable will be assigned to the well until all interests have been consolidated (by communitization, unitization, forced-pooling, or otherwise) or until a non-standard unit, eliminating such interests, has been approved by the Commission.



CERTIFICATION

I hereby certify that the information contained herein is true and complete to the best of my knowledge and belief.

Steve S. Dunn

Name
Steve S. Dunn

Position
Operations Manager

Company
Merrion Oil & Gas Corp.

Date
7/19/82

I hereby certify that the well location shown on this plat was plotted from field notes of actual surveys made by me or under my supervision, and that the same is true and correct to the best of my knowledge and belief.

Date Surveyed

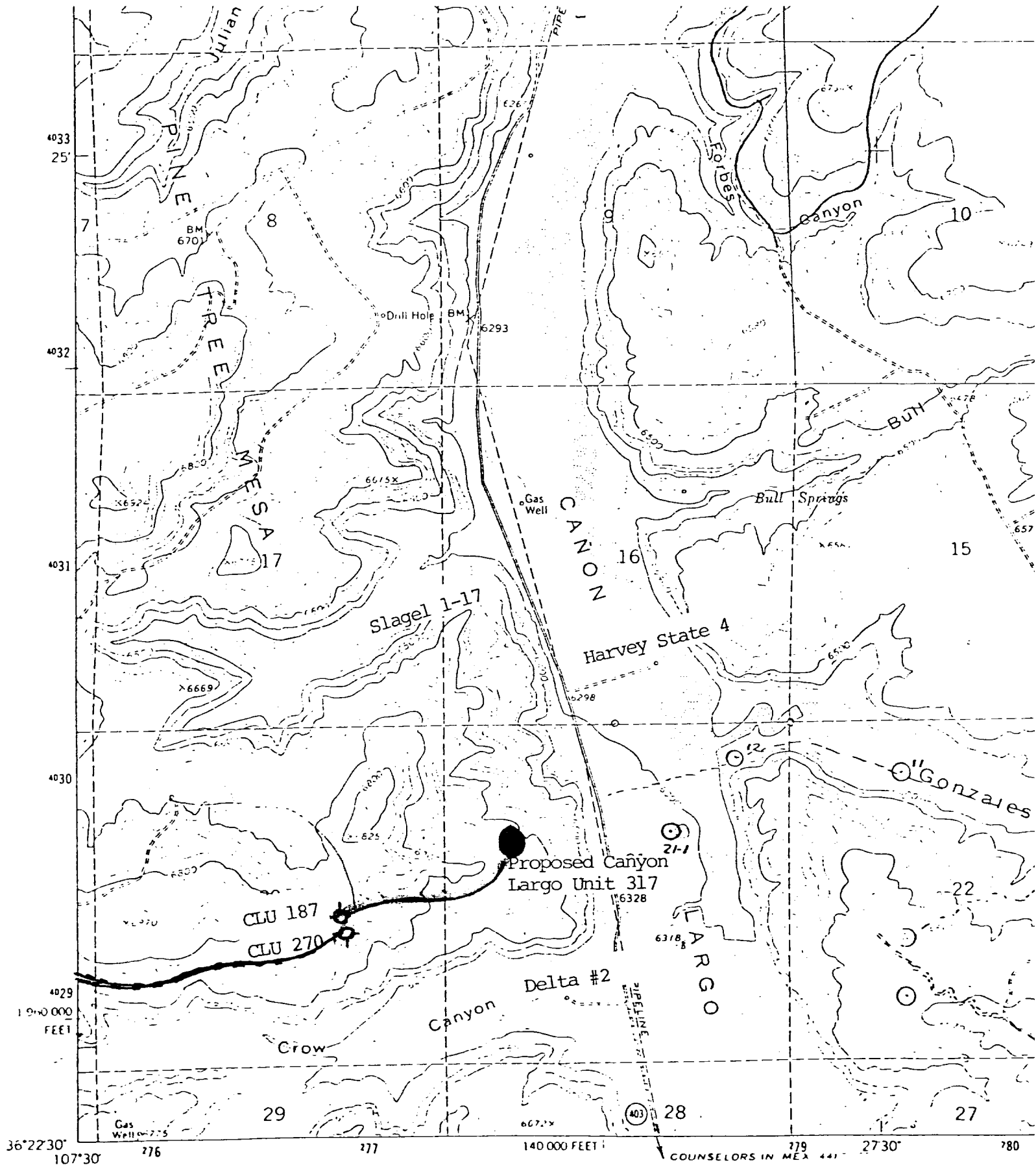
June 22, 1982

Registered Professional Engineer and/or Land Surveyor

Fred B. Kerr Jr.
Fred B. Kerr Jr.

Certificate No.

3950



Mapped, edited, and published by the Geological Survey

Control by USGS and USC&GS

Topography by photogrammetric methods from aerial photographs taken 1955-1958 and 1962. Field check.

Projection: 1927 North American datum. Horizontal grid based on New Mexico coordinate system. Universal Transverse Mercator grid ticks.

1:250,000 in blue

Vicinity Map for

Merrion Oil & Gas Corp. #317 Canyon Largo Unit
1800'FN 830'FW Sec 21-25N-6W
Rio Arriba County New Mexico

Existing Road:
New Road: