

NO. OF COPIES RECEIVED	
DISTRIBUTION	
SANTA FE	
FILE	
U.S.G.S.	
LAND OFFICE	
OPERATOR	

NEW MEXICO OIL CONSERVATION COMMISSION

30-039-23241

Form C-101
Revised 1-1-65

5A. Indicate Type of Lease	
STATE <input type="checkbox"/>	FEE <input checked="" type="checkbox"/>
5. State Oil & Gas Lease No.	

APPLICATION FOR PERMIT TO DRILL, DEEPEN, OR PLUG BACK

1a. Type of Work		7. Unit Agreement Name	
b. Type of Well OIL WELL <input checked="" type="checkbox"/> GAS WELL <input type="checkbox"/> OTHER <input type="checkbox"/>		Lindrith B Unit	
2. Name of Operator		8. Farm or Lease Name	
Mobil Producing TX. & N.M. Inc.			
3. Address of Operator		9. Well No.	
Nine Greenway Plaza, Suite 2700, Houston, TX 77046		24	
4. Location of Well		10. Field and Pool, or Wildcat	
UNIT LETTER <u>N</u> LOCATED <u>789</u> FEET FROM THE <u>South</u> LINE		Chacon-Dakota Associated	
AND <u>1395</u> FEET FROM THE <u>West</u> LINE OF SEC. <u>9</u> TWP. <u>24N</u> RGE. <u>3W</u> NMPM		160	
12. County			
Rio Arriba			
19. Proposed Depth		19A. Formation	
7750'		Dakota	
20. Rotary or C.T.			
Rotary			
21. Elevations (Show whether DF, RT, etc.)		21B. Drilling Contractor	
6869' GR		Unknown	
21A. Kind & Status Plug. Bond		22. Approx. Date Work will start	
On File			

PROPOSED CASING AND CEMENT PROGRAM

SIZE OF HOLE	SIZE OF CASING	WEIGHT PER FOOT	SETTING DEPTH	SACKS OF CEMENT	EST. TOP
17 1/2"	13-3/8"	48# H-40	0- 400'	Circulate	Surface
11"	8-5/8"	24# K-55	0-2300'	Circulate	Surface
		32# K-55	2300-3300'		
7-7/8"	4 1/2"	10.5# K-55	0-1600'		
		9.5# K-55	1600-5500'	Circulate	±2600'
		10.5# K-55	5500-7000'		
		11.6# K-55	7000-7750'		

BLOWOUT PREVENTER PROGRAM:

Casing String	Equipment Size & API Series	No & Type	Test Pressure (psi)
Surface	13-5/8" x 2000#	1 Master Gate & 1 Pipe Ram	2000
Intermediate	9" x 3000#	1 Master Gate & 1 Pipe Ram	3000

Unorthodox location approved by Administrative Order NSL-1703, dated June 13, 1983.

IN ABOVE SPACE DESCRIBE PROPOSED PROGRAM: IF PROPOSAL IS TO DEEPEN OR PLUG BACK, GIVE DATA ON PRESENT PRODUCTIVE ZONE AND PROPOSED NEW PRODUCTIVE ZONE. GIVE BLOWOUT PREVENTER PROGRAM, IF ANY.

I hereby certify that the information above is true and complete to the best of my knowledge and belief.

Signed A. D. Bond A. D. Bond Title Regulatory Technician Supervisor Date June 21, 1983

(This space for State Use)

APPROVED BY Frank J. Ray TITLE SUPERVISOR DISTRICT # 3 DATE

CONDITIONS OF APPROVAL, IF ANY:

NSL 1703

10

**NEW MEXICO OIL CONSERVATION COMMISSION
WELL LOCATION AND ACREAGE DEDICATION PLAT**

Form C-102
Supersedes C-128
Effective 1-1-85

RECEIVED

All distances must be from the outer boundaries of the Section.

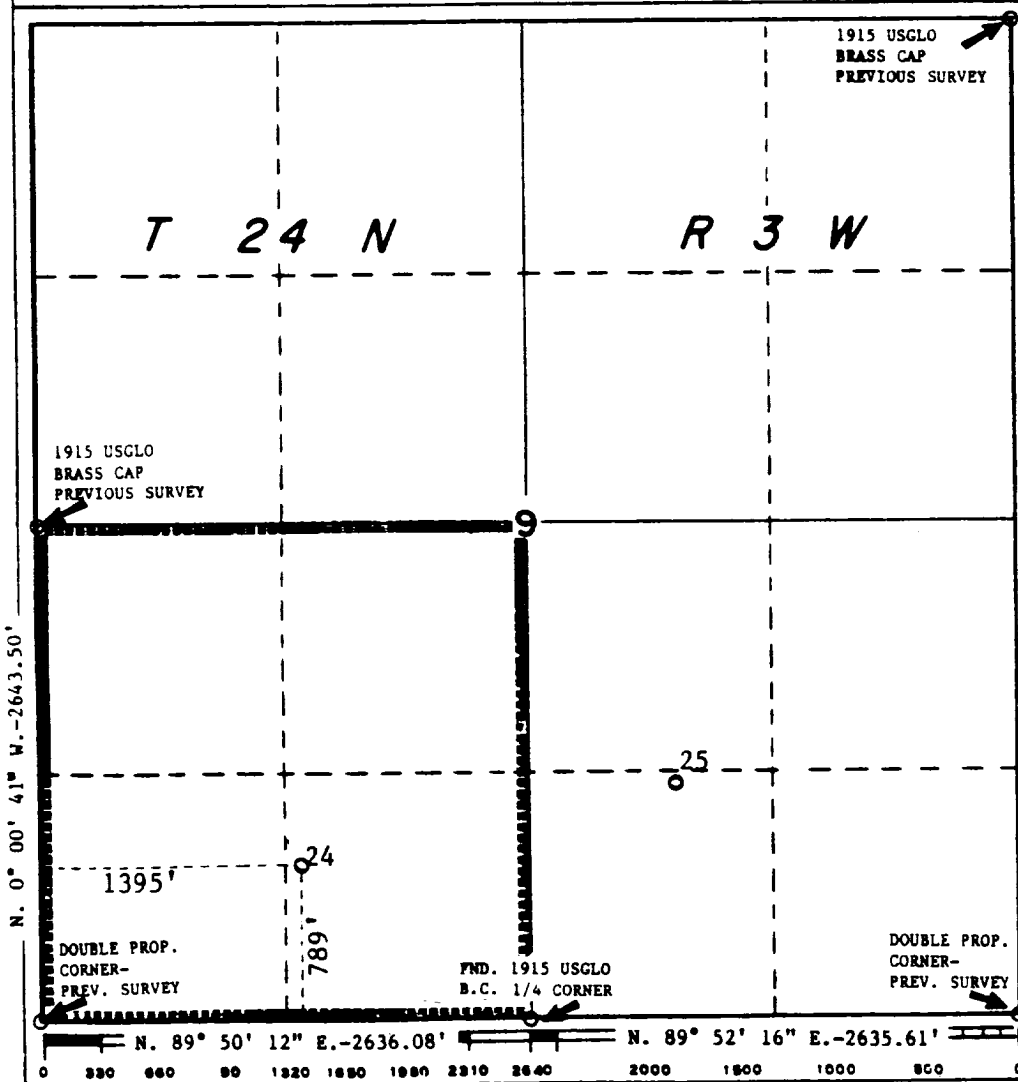
Operator Mobil Producing TX. & N.M. Inc.			Lease Lindrith B Unit		Well No. JUN 23 1984
Unit Letter N	Section 9	Township 24N	Range 3W	County Rio Arriba	
Actual Footage Location of Well: 789 feet from the South line and 1395 feet from the West line					DIST. 3
Ground Level Elev. 6869'	Producing Formation Dakota	Pool Chacon-Dakota Associated Ext.			Dedicated Acreage: 160 Acres

1. Outline the acreage dedicated to the subject well by colored pencil or hachure marks on the plat below.
2. If more than one lease is dedicated to the well, outline each and identify the ownership thereof (both as to working interest and royalty).
3. If more than one lease of different ownership is dedicated to the well, have the interests of all owners been consolidated by communitization, unitization, force-pooling, etc?

☒ Yes ☐ No If answer is "yes," type of consolidation Unitization

If answer is "no," list the owners and tract descriptions which have actually been consolidated. (Use reverse side of this form if necessary.) _____

No allowable will be assigned to the well until all interests have been consolidated (by communitization, unitization, forced-pooling, or otherwise) or until a non-standard unit, eliminating such interests, has been approved by the Commission.



CERTIFICATION

I hereby certify that the information contained herein is true and complete to the best of my knowledge and belief.

Name
A. D. Bond
Position **Regulatory Engineering Coordinator II**
Company **Mobil Producing TX. & N.M. Inc.**

Date
June 21, 1983

I hereby certify that the well location shown on this plat was plotted from field notes of actual survey made by me or under my supervision, and that the same is true and correct to the best of my knowledge and belief.

Date Surveyed
April 12, 1983
Registered Professional Engineer and/or Land Surveyor

H. A. Carson, Jr.
Certificate No.
5063

