

UNITED STATES  
DEPARTMENT OF THE INTERIOR  
GEOLOGICAL SURVEY

## APPLICATION FOR PERMIT TO DRILL, DEEPEN, OR PLUG BACK

## 1a. TYPE OF WORK

DRILL ☒DEEPEN ☐PLUG BACK ☐

## b. TYPE OF WELL

OIL  
WELL ☒GAS  
WELL ☐

OTHER

Gallup-Dakota

SINGLE  
ZONED ☒

- 1900

MULTIPLE  
ZONED ☐

## 2. NAME OF OPERATOR

Union Texas Petroleum Corporation

## 3. ADDRESS OF OPERATOR

P. O. Box 808, Farmington, New Mexico 87499

## 4. LOCATION OF WELL (Report location clearly and in accordance with any State requirements.)

At surface

352 ft./South line and 939 ft./West line

At proposed prod. zone

Same as above

## 14. DISTANCE IN MILES AND DIRECTION FROM NEAREST TOWN OR POST OFFICE

10 miles Northwest of Lindreth, New Mexico

## 15. DISTANCE FROM PROPOSED\*

LOCATION TO NEAREST

352 ft.

PROPERTY OR LEASE LINE, FT.

(Also to nearest drlg. unit line, if any)

352 ft.

## 18. DISTANCE FROM PROPOSED LOCATION\*

TO NEAREST WELL, DRILLING, COMPLETED,

OR APPLIED FOR, ON THIS LEASE, FT.

1859 ft.

## 19. PROPOSED DEPTH

8250'

## 21. ELEVATIONS (Show whether DP, RT, GR, etc.)

7192' GR

## 23.

DRILLING OPERATIONS ARE

SUBJECT TO COMPLIANCE WITH ATTACHED

"GENERAL REQUIREMENTS"

PROPOSED CASING AND CEMENTING PROGRAM

## 22. APPROX. DATE WORK WILL START\*

July 1, 1983

This action is subject to administrative  
appeal pursuant to 30 CFR 250.

SIZE OF HOLE	SIZE OF CASING	WEIGHT PER FOOT	SETTING DEPTH	QUANTITY OF CEMENT
12-1/4"	8-5/8"	24.0# K-55	300'	250 cu. ft. (circulated)
7-7/8"	4-1/2"	11.6# K-55	8250'	2850 cu. ft. (circulated)

We desire to drill 12-1/4" surface hole to approx. 300 ft. using natural mud as a circulating medium. Run new 8-5/8", 24.0#, K-55 casing to TD. Cement with approx. 250 cu. ft. Class "B" cement circulated to surface. Pressure test the casing. Drill 7-7/8" hole to TD of approx. 8250 ft. using a permaloid non-dispersed mud as the circulating medium. Log the well. Run new 4-1/2", 11.6#, K-55 casing to TD with DV tool at approx. 2150 ft. Cement first stage with approx. 1400 cu. ft. of 65/35/6 followed by 275 cu. ft. 50/50 Poz. Cement second stage with approx. 1100 cu. ft. 65/35/12 Poz circulated to surface. Drill out the DV tool and pressure test the casing. Perforate and fracture the Dakota and Gallup zones. Clean the well up. Run new 2-3/8" EUE, 4.7#, J-55 tubing to the Dakota zone. Run rod pump and rods. Set a pumping unit and tanks. Test the well and connect to a gathering system.

The gas from this well has previously been dedicated to a transporter.

NOTE: Actual cement volumes to be calculated from caliper log.

IN ABOVE SPACE DESCRIBE PROPOSED PROGRAM: If proposal is to deepen or plug back, give data on present productive zone and proposed new productive zone. If proposal is to drill or deepen directionally, give pertinent data on subsurface locations and measured and true vertical depths. Give blowout preventer program, if any.

## 24.

SIGNED

*W. K. Cooper*  
W. K. Cooper

TITLE

Field Operations Manager

DATE

May 26, 1983

(This space for Federal or State office use)

PERMIT NO.

APPROVAL DATE

APPROVED BY

TITLE

DATE

CONDITIONS OF APPROVAL, IF ANY:

*ok*

NMOCC

*Joni Lino*

All distances must be from the outer boundaries of the Section.

Operator <b>UNION TEXAS PETROLEUM CORPORATION</b>			Lease <b>MCCRODEN "A"</b>		Well No. <b>6</b>
Unit Letter <b>M</b>	Section <b>9</b>	Township <b>25 NORTH</b>	Range <b>3 WEST</b>	County <b>RIO ARriba</b>	
Actual Footage Location of Well:					
<b>352</b> feet from the <b>SOUTH</b> line and		<b>939</b> feet from the <b>WEST</b> line			
Ground Level Elev. <b>7192</b>	Producing Formation <b>Gallup-Dakota</b>	Pool <b>Ojito Gallup-Dakota Ext.</b>	Dedicated Acreage: <b>SW SW 40.00</b> Acres		

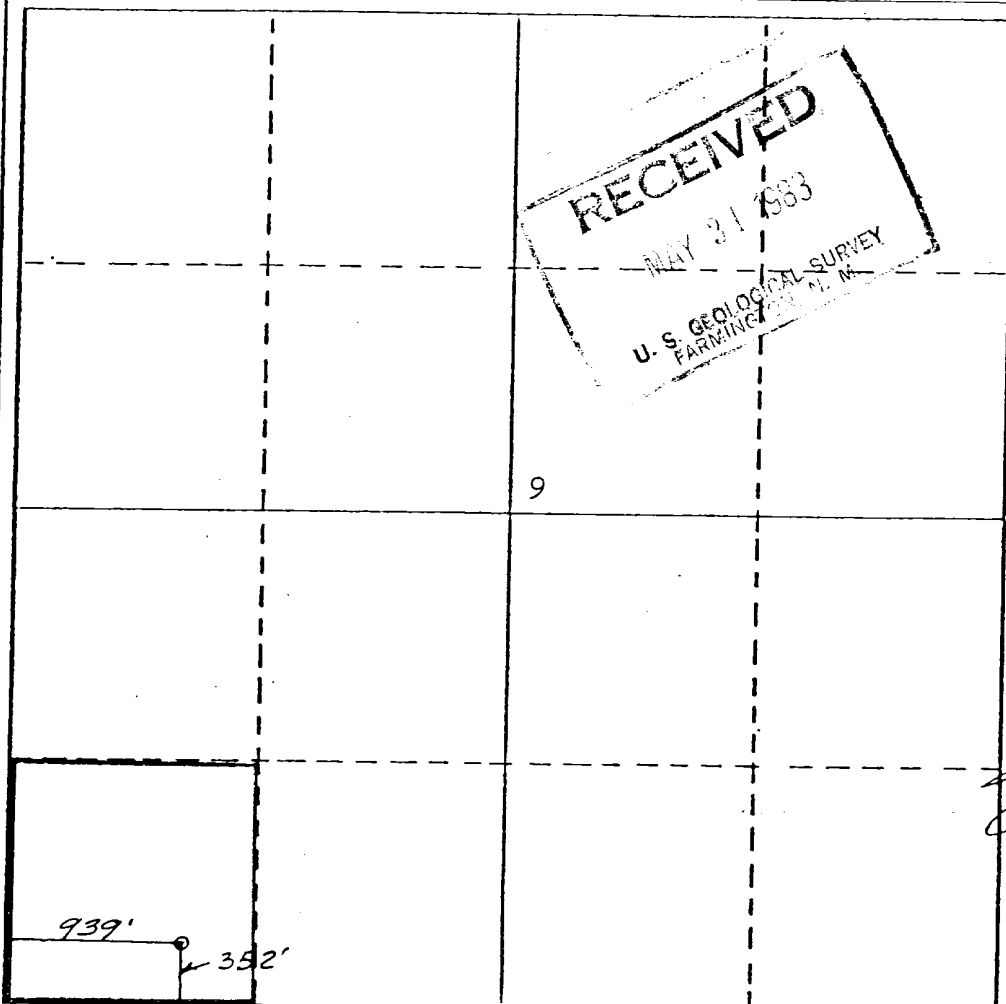
1. Outline the acreage dedicated to the subject well by colored pencil or hatchure marks on the plat below.
2. If more than one lease is dedicated to the well, outline each and identify the ownership thereof (both as to working interest and royalty).
3. If more than one lease of different ownership is dedicated to the well, have the interests of all owners been consolidated by communitization, unitization, force-pooling, etc?

☐ Yes ☐ No If answer is "yes," type of consolidation \_\_\_\_\_

**OIL CON. DIV.**  
**DIST. 3**

If answer is "no," list the owners and tract descriptions which have actually been consolidated. (Use reverse side of this form if necessary.) \_\_\_\_\_

No allowable will be assigned to the well until all interests have been consolidated (by communitization, unitization, forced-pooling, or otherwise) or until a non-standard unit, eliminating such interests, has been approved by the Division



**CERTIFICATION**

I hereby certify that the information contained herein is true and complete to the best of my knowledge and belief.

Name  
**Rudy D. Motto**  
Position  
**Area Operations Manager**  
Company  
**Union Texas Petroleum Corp.**  
Date  
**April 29, 1983**

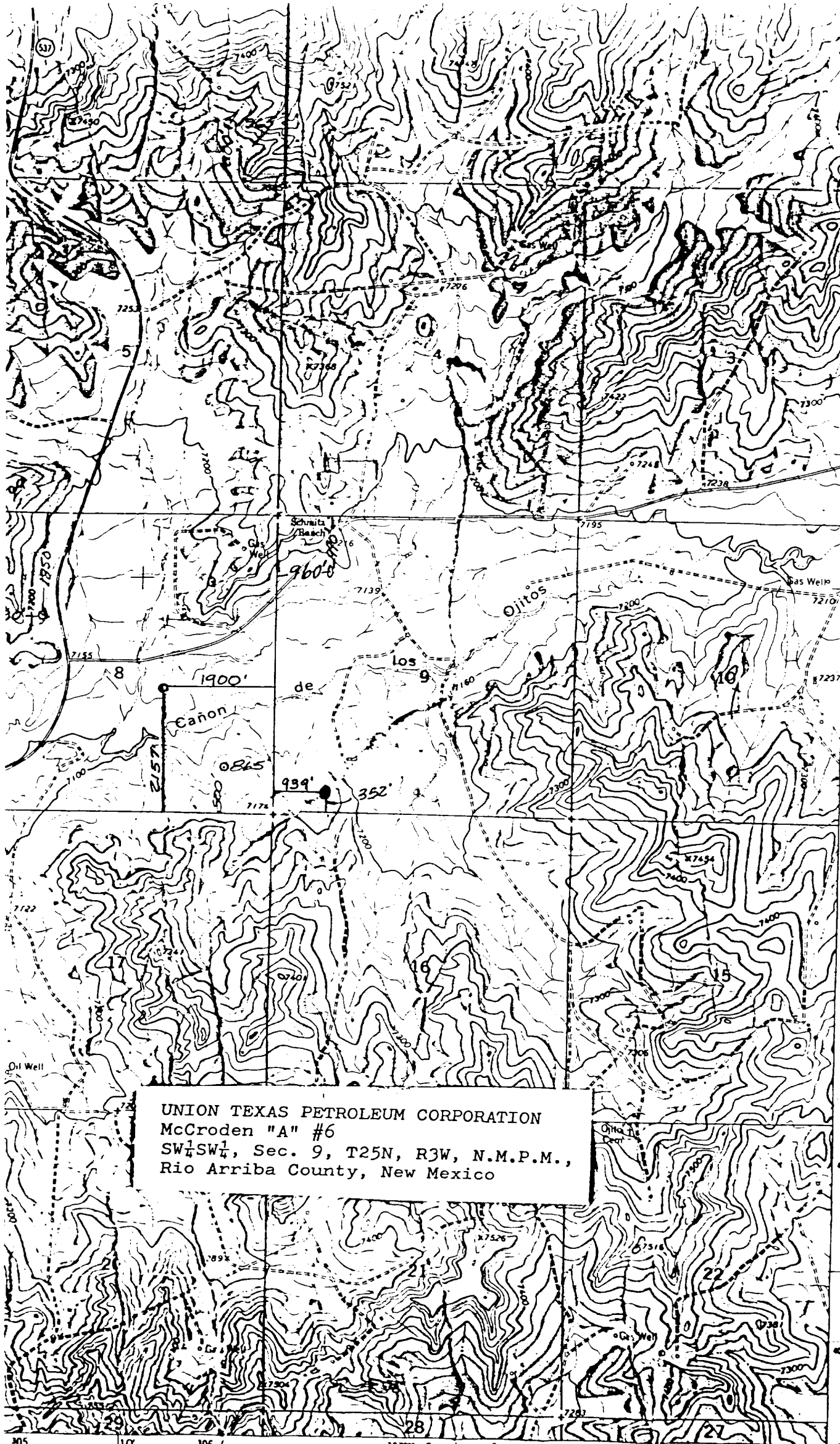
I hereby certify that the well location shown on this plat was plotted from field notes of actual surveys made by me or under my supervision and that the same is true and correct to the best of my knowledge and belief.

Date Surveyed  
**April 21, 1983**  
Registered Professional Engineer  
and/or Land Surveyor

**Michael Daly**

Certificate No.

**5992**



UNION TEXAS PETROLEUM CORPORATION  
McCroden "A" #6  
SW $\frac{1}{4}$ SW $\frac{1}{4}$ , Sec. 9, T25N, R3W, N.M.P.M.,  
Rio Arriba County, New Mexico

4035  
T. 26 N.  
4034  
T. 25 N.  
4033  
OJITO 2.4 MI  
25'  
4032  
4031  
4030  
4029  
4028000m. N.  
36°22'30"  
107°07'30"

1 MILE  
00 FEET  
TER

ROAD CLASSIFICATION  
Medium duty — — — — —  
Light duty — — — — —  
Unimproved dirt - - - - -

UNDIRTY  
4556 1 SE