

All distances must be from the outer boundaries of the Section.

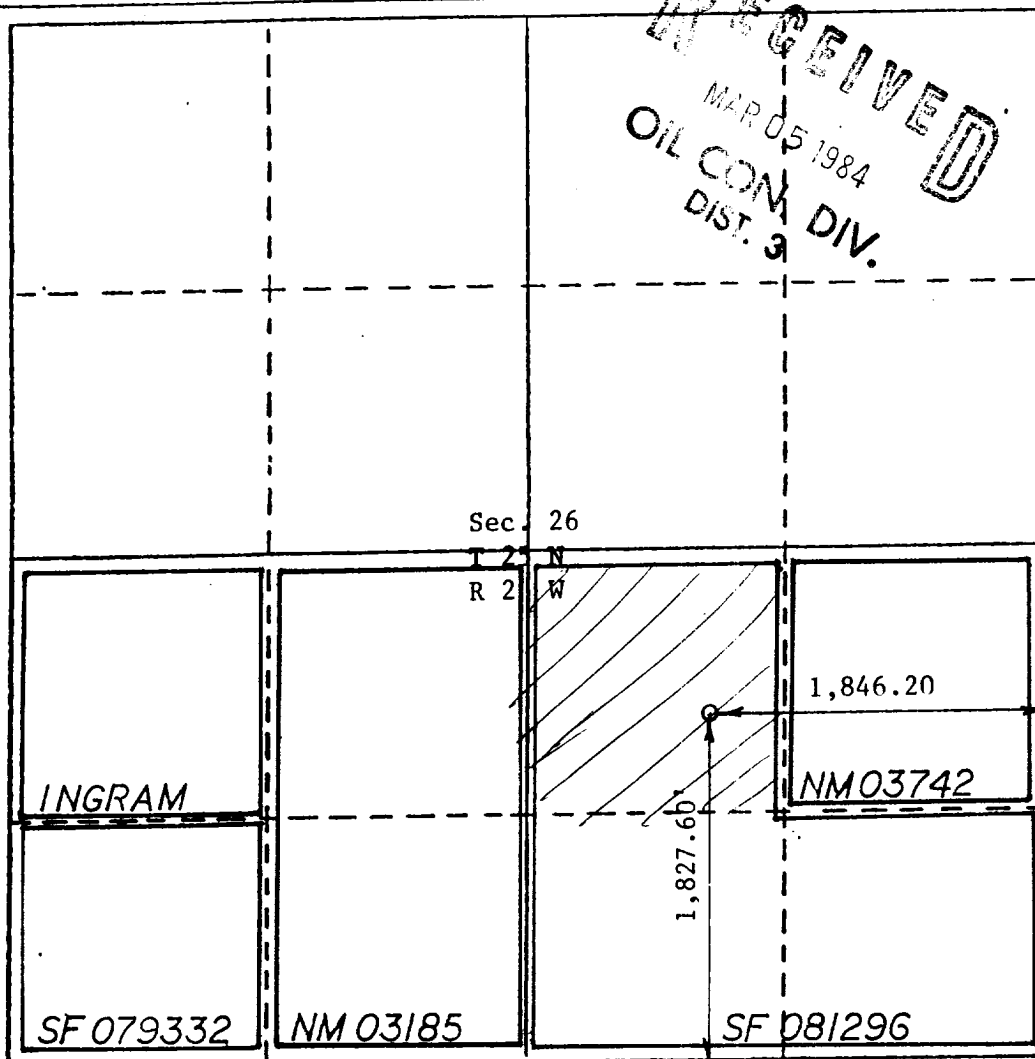
Operator E.Alex Phillips		Lease Federal # SF 081296 <i>Gavilan</i>		Well No. NO. 2 CAVILAN
Unit Letter J	Section 26	Township 25 N	Range 2 W	County RIO ARRIBA
Actual Footage Location of Well: 1,846.20 feet from the East line and 1,827.60 feet from the South line				
Ground Level Elev. 7404.18	Producing Formation Gallup ^{Dakota}	Pool Gavilan Mancos <i>Gavilan Dakota</i>	Dedicated Acreage: S/ 320/40 Acres	

1. Outline the acreage dedicated to the subject well by colored pencil or hatchure marks on the plat below.
2. If more than one lease is dedicated to the well, outline each and identify the ownership thereof (both as to working interest and royalty). *SEE ATTACHMENT*
3. If more than one lease of different ownership is dedicated to the well, have the interests of all owners been consolidated by communitization, unitization, force-pooling, etc?

☒ Yes ☐ No If answer is "yes," type of consolidation Communitization

If answer is "no," list the owners and tract descriptions which have actually been consolidated. (Use reverse side of this form if necessary.)

No allowable will be assigned to the well until all interests have been consolidated (by communitization, unitization, forced-pooling, or otherwise) or until a non-standard unit, eliminating such interests, has been approved by the Division.



CERTIFICATION

I hereby certify that the information contained herein is true and complete to the best of my knowledge and belief.

E.Alex Phillips

Name

President

Position

Company

March 1, 1984

Date

E.Alex Phillips

I hereby certify that the well location shown on this plat was plotted from field notes of actual surveys made by me or under my supervision, and that the same is true and correct to the best of my knowledge and belief.

10-19-83

Date Surveyed

Wayne E. Johnston
Registered Professional Engineer
and/or Land Surveyor

Wayne E. Johnston
6540

Certificate No.

EXHIBIT "A"

Plat of Communitized Area Covering the South Half (S/2)
of Section 26, Township 25 North, Range 2 West,
Rio Arriba County, New Mexico

Tract #4 Jerome P. McHugh 68.75% E. Alex Phillips 31.25% 40 acres Lloyd J. Ingram, et. al. Tract #5 Gulf Oil Corporation 100% 40 acres SF 079332	Tract #3 Northwest Pipeline 75% Dugan Production Corporation 25% 80 acres NM 03185	Tract #2 120 acres Hooper, Kimball, Williams 33.33% Reading & Bates 33.33% C.C. Oatman .87% Warren Clark Trust .81% Testamentary Trust .43% Warren Clark P C Ltd. 10.41% IBEX Partnership 10.41% Pet. Corp. of Texas 10.41% SF 081286	Tract #1 Mountain States Natural Gas 50% Ralph Gilliland 25% Kistler Investment Company 25% NM 03742 40 acres
---	--	--	---

Tracts 1,2,3&5: Royalty - U.S.A., 12.5%

Tract 4: Royalty - Lloyd J. Ingram, et. al., 12.5%

RECEIVED
MAR 05 1984
OIL CON. DIV.
DIST. 3