

UNITED STATES
DEPARTMENT OF THE INTERIOR
GEOLOGICAL SURVEY

JAN 10 1984

30-034-23375
6. LEASE DESIGNATION AND SERIAL NO.

APPLICATION FOR PERMIT TO DRILL, DEEPEN, OR PLUG BACK

1a. TYPE OF WORK

DRILL ☒DEEPEN ☐PLUG BACK ☐

b. TYPE OF WELL

OIL
WELL ☒GAS
WELL ☐OTHER ☐SINGLE
ZONE ☒MULTIPLE
ZONE ☐

2. NAME OF OPERATOR

Robert L. Bayless

3. ADDRESS OF OPERATOR

P.O. Box 1541, Farmington, NM 87499

4. LOCATION OF WELL (Report location clearly and in accordance with any State requirements.)

At surface

330' FNL & 2290' FEL

At proposed prod. zone same

14. DISTANCE IN MILES AND DIRECTION FROM NEAREST TOWN OR POST OFFICE*

RECEIVED
NOV 3 01983
BUREAU OF LAND MANAGEMENT
FARMINGTON RESOURCE AREA

15. DISTANCE FROM PROPOSED*

LOCATION TO NEAREST
PROPERTY OR LEASE LINE, FT.
(Also to nearest drlg. unit line, if any)

16. NO. OF ACRES IN LEASE

2560

17. NO. OF ACRES ASSIGNED
TO THIS WELL

160

18. DISTANCE FROM PROPOSED LOCATION*

TO NEAREST WELL, DRILLING, COMPLETED,
OR APPLIED FOR, ON THIS LEASE, FT.

19. PROPOSED DEPTH

8224

20. ROTARY OR CABLE TOOLS

Rotary

21. ELEVATIONS (Show whether DF, RT, GR, etc.)

7349' GL

22. APPROX. DATE WORK WILL START*

ASAP

23.

PROPOSED CASING AND CEMENTING PROGRAM

SIZE OF HOLE	SIZE OF CASING	WEIGHT PER FOOT	SETTING DEPTH	QUANTITY OF CEMENT
12 1/4"	8-5/8"	20#	229'	89 ft ³ circulated to surface
7-7/8"	4 1/2"	11.6#	8224'	413 ft ³ 1st stg., 472 ft ³ 2nd stg

Will drill 12 1/4" hole to 229' and set 229' of 8-5/8", 20# new casing with 89 ft³ of Class B cement with 2% CaCl. Will drill 7-7/8" hole to 8224' to test Dakota formation. After logging will run 8224' of 4 1/2", 11.6#/ft, J-55 new casing. Will set D.V. tool at 5004' and cement as follows: 1st stage 368 ft³ Class B with 2% econofil followed by 413 ft³ Class B neat cement; 2nd stage 735 ft³ Class B with 2% econofil followed by 472 ft³ Class B neat cement. Circulating medium will be clear water, natural mud and water loss control additives. No abnormal pressures or temperatures are anticipated. Blowout preventer schematic is attached. The gas from this formation is dedicated to a gas contract.

ESTIMATED TOPS: Pic. Cliffs - 3792' Chacra - 4644' Cliff House - 5183'
Menefee - 5452' Point Lookout - 5925' Gallup - 6582'
Green Horn - 7876' Dakota - 7964' T.D. - 8224'

IN ABOVE SPACE DESCRIBE PROPOSED PROGRAM: If proposal is to deepen or plug back, give data on present productive zone and proposed new productive zone. If proposal is to drill or deepen directionally, give pertinent data on subsurface locations and measured and true vertical depths. Give blowout preventer program, if any.

24.

SIGNED

TITLE

Operator

(This space for Federal or State office use)

PERMIT NO.

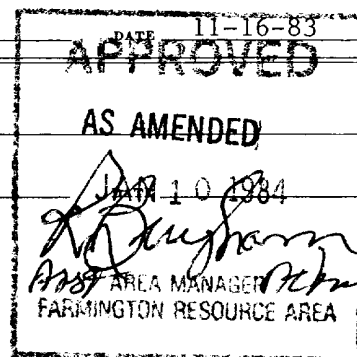
APPROVAL DATE

APPROVED BY

TITLE

CONDITIONS OF APPROVAL, IF ANY:

NMOCC



OIL CONSERVATION DIVISION

STATE OF NEW MEXICO
ENERGY AND MINERALS DEPARTMENTP. O. BOX 2088
SANTA FE, NEW MEXICO 87501Form C-107
Revised 10-1

All distances must be from the outer boundaries of the Section.

Operator R. L. BAYLESS			Lease JICARILLA 65 B		Well No. 2
Unit Letter B	Section 16	Township 25N	Range 4W	County Rio Arriba	
Actual Footage Location of Well: 330 feet from the North line and 2290 feet from the East line					
Ground Level Elev: 7349	Producing Formation Dakota		Pool West Lindrith Gallup/Dakota		Dedicated Acreage: 160 Acres

1. Outline the acreage dedicated to the subject well by colored pencil or hachure marks on the plat below.
2. If more than one lease is dedicated to the well, outline each and identify the ownership thereof (both as to working interest and royalty).
3. If more than one lease of different ownership is dedicated to the well, have the interests of all owners been consolidated by communitization, unitization, force-pooling, etc?

☐ Yes ☐ No If answer is "yes," type of consolidation _____

If answer is "no," list the owners and tract descriptions which have actually been consolidated. (Use reverse side of this form if necessary.) _____

No allowable will be assigned to the well until all interests have been consolidated (by communitization, unitization, forced-pooling, or otherwise) or until a non-standard unit, eliminating such interests, has been approved by the Commission.

		330'	2290'
		©	
Sec.			
		16	

JAN 12 1984
OIL CON. DIV.
DIST. 3

Scale: 1"=1000'

CERTIFICATION

I hereby certify that the information contained herein is true and complete to the best of my knowledge and belief.

Name Robert L. BaylessPosition OperatorCompany Robert L. BaylessDate 11-16-83

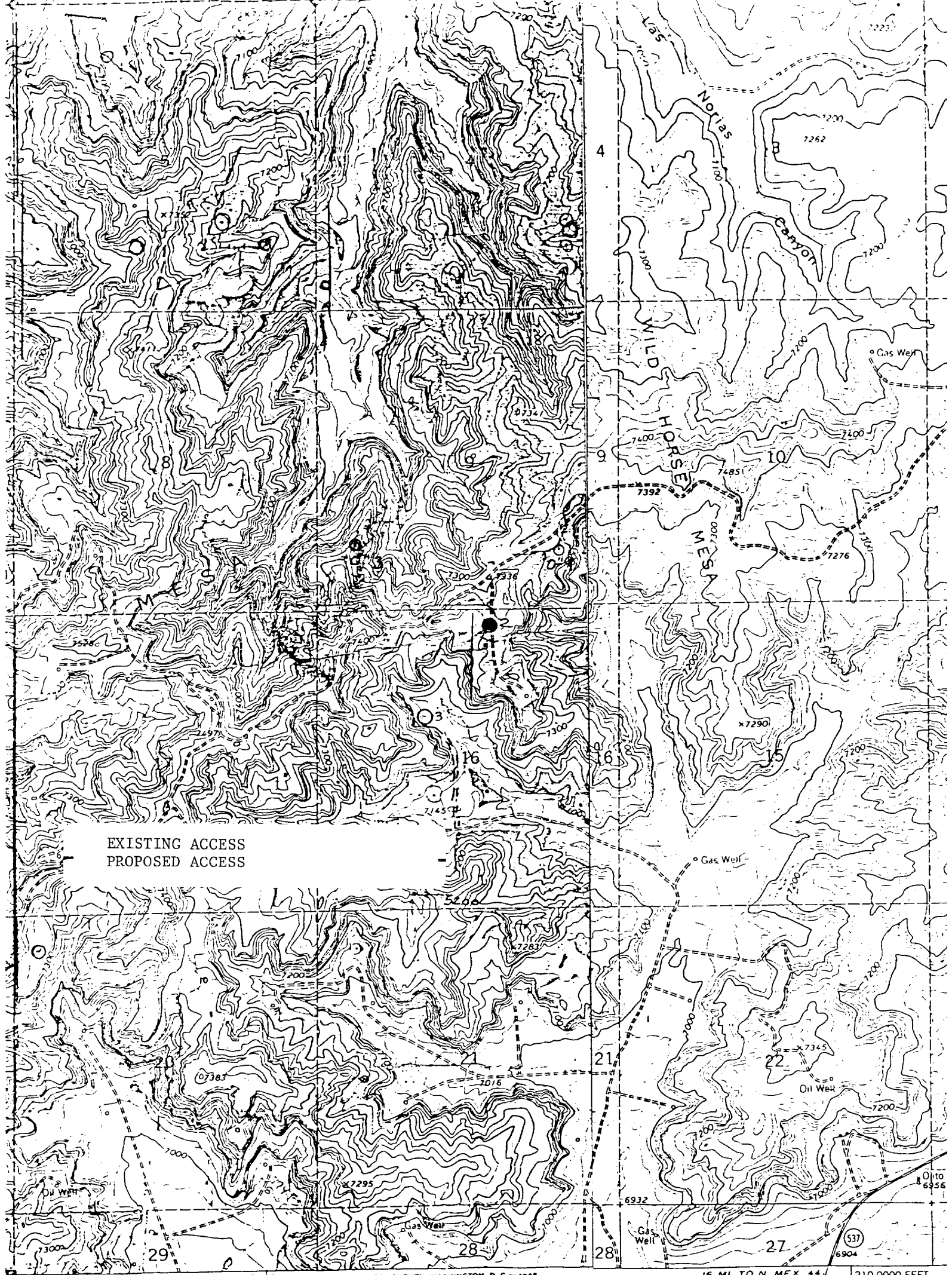
I hereby certify that the well location shown on this plat was plotted from field notes of actual surveys made by me or under my supervision, and that the same is true and correct to the best of my knowledge and belief.

Date Surveyed December 17, 1982

Registered Professional Engineer and Land Surveyor

Fred B. Kerr Jr.

Certificate No. 3950



QUADRANGLE LOCATION

ROAD CLASSIFICATION

Light-duty _____ Unimproved dirt - - - - -

Vicinity Map for
R. L. BAYLESS #2 JICARILLA 65 "B"
330'FNL 2290'FEL Sec. 16-T25N-R14W
RIO ARriba COUNTY, NEW MEXICO

Mapped, edited, and published by the Geological
Control by USGS and USC&GS
Topography by photogrammetric methods from aerial
photographs taken 1958 and 1962. Field checked 1963
Polyconic projection. 1927 North American datum
Mexico-coordinate system, centric
e Mercator grid ticks,
not been established
n Basin Gas Field