

UNITED STATES  
DEPARTMENT OF THE INTERIOR  
BUREAU OF LAND MANAGEMENT

APPLICATION FOR PERMIT TO DRILL, DEEPEN, OR PLUG BACK

1a. TYPE OF WORK

DRILL ☒

DEEPEN ☐

PLUG BACK ☐

b. TYPE OF WELL

OIL  
WELL ☐

GAS  
WELL ☒

OTHER

SINGLE  
ZONE ☒

MULTIPLE  
ZONE ☐

2. NAME OF OPERATOR

Getty Oil Company

3. ADDRESS OF OPERATOR

P.O. Box 3360, Casper, WY 82602

4. LOCATION OF WELL (Report location clearly and in accordance with any State Requirements.)

At surface

1850' FSL and 1190' FWL (NW/SW) of Section 21

At proposed prod. zone

Same

14. DISTANCE IN MILES AND DIRECTION FROM NEAREST TOWN OR POST OFFICE\*

Approximately 18 miles northeast of Counselors, NM

15. DISTANCE FROM PROPOSED\*

LOCATION TO NEAREST

PROPERTY OR LEASE LINE, FT.

(Also to nearest drlg. unit line, if any)

790'

790'

16. NO. OF ACRES IN LEASE

2560

17. NO. OF ACRES ASSIGNED

TO THIS WELL

320 acres (S/2 of Sec. 21)

18. DISTANCE FROM PROPOSED LOCATION\*

TO NEAREST WELL, DRILLING, COMPLETED,

OR APPLIED FOR, ON THIS LEASE, FT.

3300' (Dakota)

19. PROPOSED DEPTH

7150'

20. ROTARY OR CABLE TOOLS

Rotary

21. ELEVATIONS (Show whether DF, RT, GR, etc.)

6617' GR

DRILLING OPERATIONS AUTHORIZED ARE  
SUBJECT TO COMPLIANCE WITH ATTACHED

22. APPROX. DATE WORK WILL START\*

April 5, 1984

23.

GENERAL REQUIREMENTS CEMENTING PROGRAM

This action is subject to administrative  
appeal pursuant to 30 CFR 290.

SIZE OF HOLE	SIZE OF CASING	WEIGHT PER FOOT	SETTING DEPTH	QUANTITY OF CEMENT
12 1/4"	8 5/8"	24#	300'	*212 sx to cement to surface
7 7/8"	5 1/2"	14 & 15.5#	7150'	*1018 sx 3-stage cementing to surface

Attachment "A" states drilling tools/equipment to be used, the casing and cement programs, and the anticipated length of drilling activity. Also attached is the Drilling Program and Thirteen Point Surface Use Program.

\*Cement volumes will depend on volume calculated from hole caliper.

Gas is Dedicated.

IN ABOVE SPACE DESCRIBE PROPOSED PROGRAM: If proposal is to deepen or plug back, give data on present productive zone and proposed new productive zone. If proposal is to drill or deepen directionally, give pertinent data on subsurface locations and measured and true vertical depths. Give blowout preventer program, if any.

24.

SIGNED

TITLE Area Superintendent

(This space for Federal or State office use)

PERMIT NO.

APPROVAL DATE

APPROVED BY

TITLE

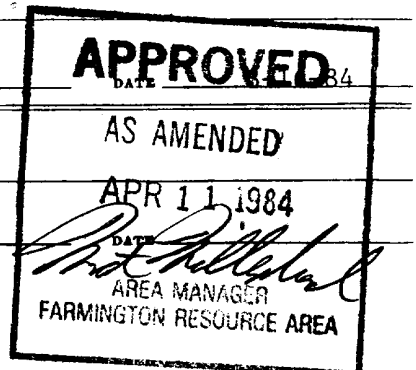
CONDITIONS OF APPROVAL, IF ANY:

ch 7

NMOCC

\*See Instructions On Reverse Side

Title 18 U.S.C. Section 1001, makes it a crime for any person knowingly and willfully to make to any department or agency of the United States any false, fictitious or fraudulent statements or representations as to any matter within its jurisdiction.



OIL CONSERVATION DIVISION

P. O. BOX 2088

SANTA FE, NEW MEXICO 87501

Form C-107  
Revised 10-1-78

All distances must be from the outer boundaries of the Section.

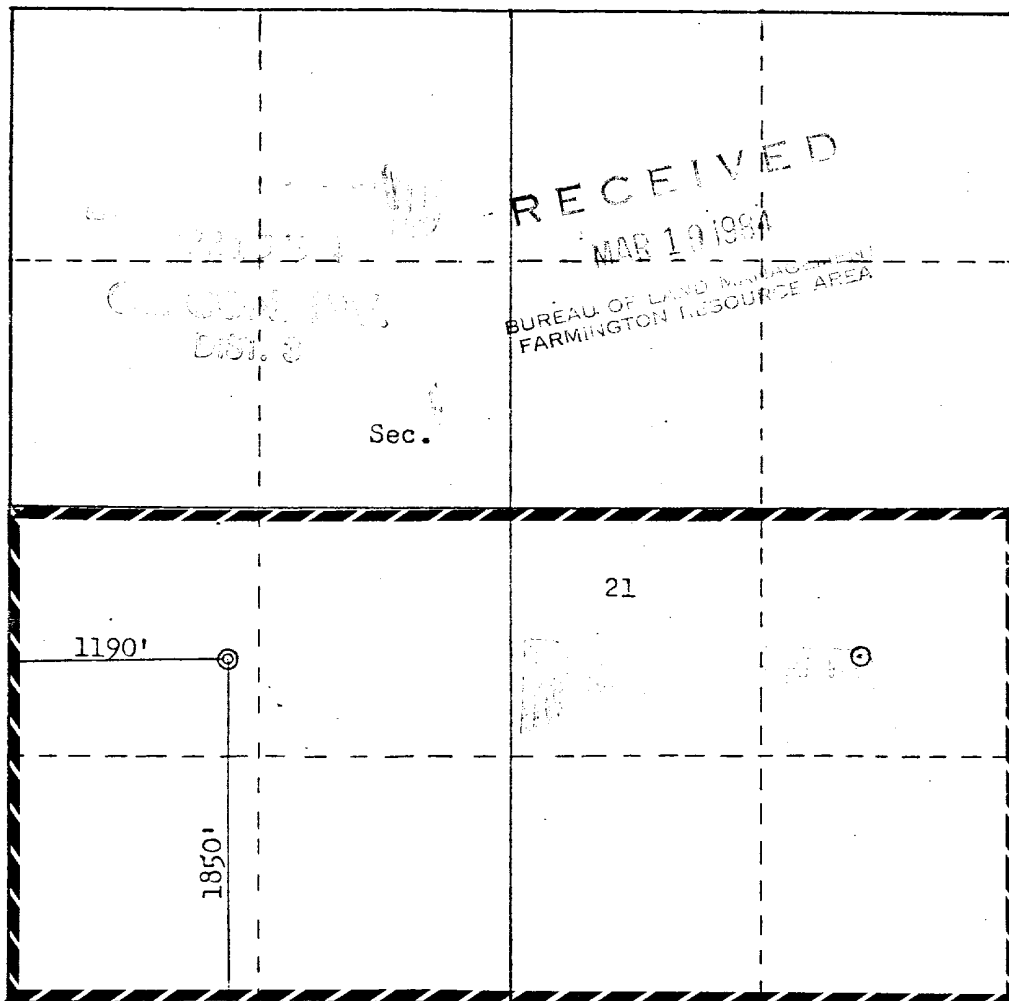
Operator <b>GETTY OIL COMPANY</b>			Lease <b>JICARILLA "C"</b>		Well No. <b>26E</b>
Unit Letter <b>L</b>	Section <b>21</b>	Township <b>25N</b>	Range <b>5W</b>	County <b>Rio Arriba</b>	
Actual Footage Location of Well: <b>1850</b> feet from the <b>South</b> line and <b>1190</b> feet from the <b>West</b> line					
Ground Level Elev. <b>6617</b>	Producing Formation <b>Dakota</b>		Pool <b>Basin</b>		Dedicated Acreage: <b>320, (S/2)</b> Acres

1. Outline the acreage dedicated to the subject well by colored pencil or hachure marks on the plat below.
2. If more than one lease is dedicated to the well, outline each and identify the ownership thereof (both as to working interest and royalty).
3. If more than one lease of different ownership is dedicated to the well, have the interests of all owners been consolidated by communitization, unitization, force-pooling, etc?

☐ Yes ☐ No If answer is "yes," type of consolidation \_\_\_\_\_

If answer is "no," list the owners and tract descriptions which have actually been consolidated. (Use reverse side of this form if necessary.) \_\_\_\_\_

No allowable will be assigned to the well until all interests have been consolidated (by communitization, unitization, forced-pooling, or otherwise) or until a non-standard unit, eliminating such interests, has been approved by the Commission.



Scale: 1"=1000'

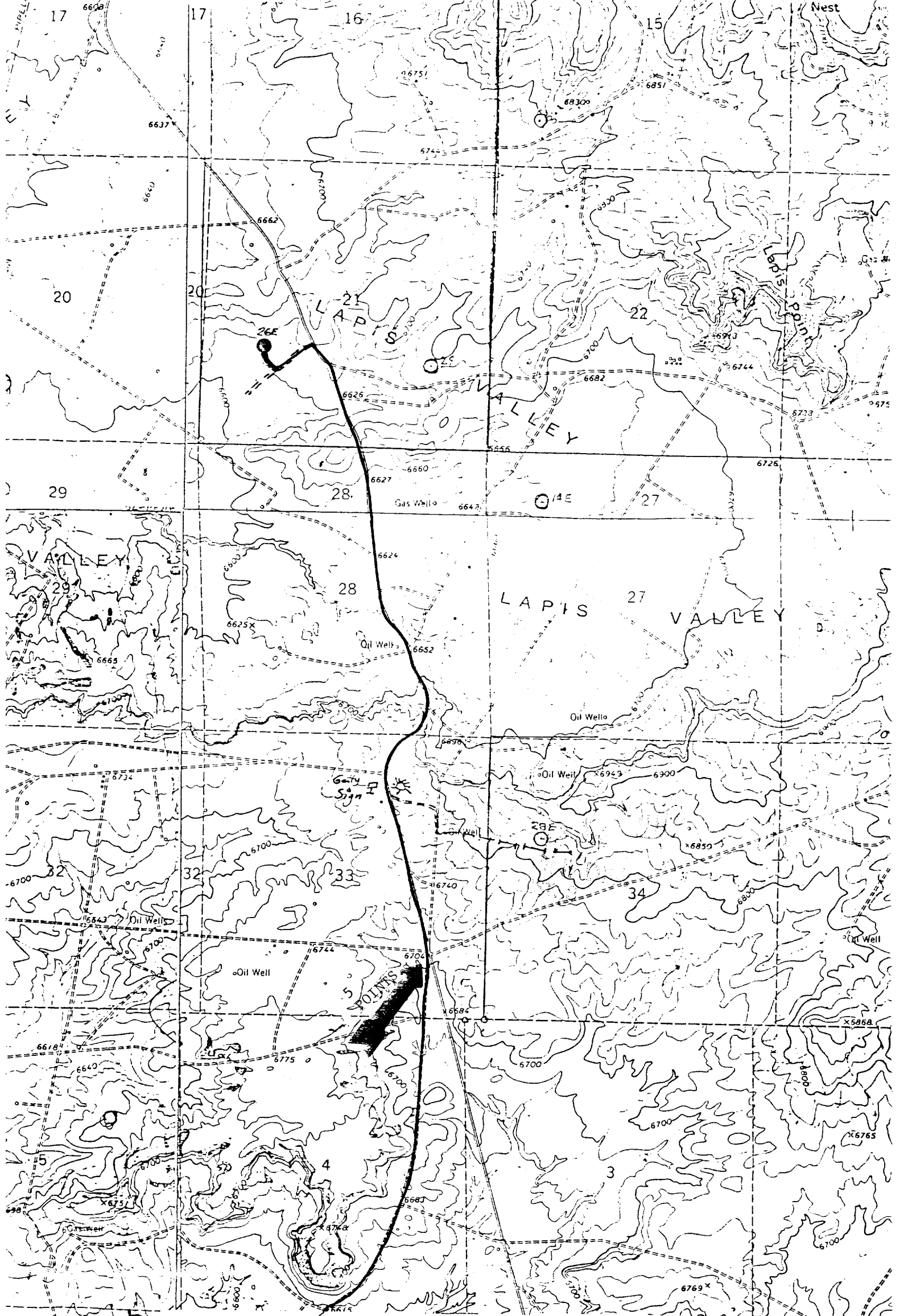
CERTIFICATION

I hereby certify that the information contained herein is true and complete to the best of my knowledge and belief.

Name *Don B...*  
Position Area Superintendent  
Company Getty Oil Company  
Date 3-16-84

I hereby certify that the well location shown on this plat was plotted from field notes of actual surveys made by me or under my supervision, and that the same is true and correct to the best of my knowledge and belief.

Date Surveyed February 28, 1984  
Registered Professional Engineer and Land Surveyor  
*Fred B. Kerr Jr.*  
Certificate No. 3950



Vicinity Map for  
GETTY OIL COMPANY #26E JICARILLA "C"  
1850' FSL 1190' FWL Sec. 21-T25N-R5W  
RIO ARriba COUNTY, NEW MEXICO

**map A**

- Proposed Location
- Existing Road
- Proposed New Access Road