

SUBMIT IN TRIPPLICATE*
(Other instructions on
reverse side)

31M-FARM
8-11-84-12496
Form approved.
Budget Bureau No. 1004-0136
Expires August 31, 1985

UNITED STATES
DEPARTMENT OF THE INTERIOR
BUREAU OF LAND MANAGEMENT

APPLICATION FOR PERMIT TO DRILL, DEEPEN, OR PLUG BACK

1a. TYPE OF WORK
DRILL ☒ DEEPEN ☐ PLUG BACK ☐

b. TYPE OF WELL
OIL WELL ☐ GAS WELL ☒ OTHER ☐ SINGLE ZONE ☒ MULTIPLE ZONE ☐

2. NAME OF OPERATOR
Amoco Production Company

3. ADDRESS OF OPERATOR
501 Airport Drive, Farmington, NM 87401

4. LOCATION OF WELL (Report location clearly and in accordance with any State requirements*)
At surface
880' FSL X 940' FWL
At proposed prod. zone Same

14. DISTANCE IN MILES AND DIRECTION FROM NEAREST TOWN OR POST OFFICE*
3 miles northeast of Lybrooks, NM

15. DISTANCE FROM PROPOSED*
LOCATION TO NEAREST
PROPERTY OR LEASE LINE, FT.
(Also to nearest drig. unit line, if any)
880'

16. NO. OF ACRES IN LEASE
2560

18. DISTANCE FROM PROPOSED LOCATION*
TO NEAREST WELL, DRILLING, COMPLETED,
OR APPLIED FOR, ON THIS LEASE, FT.
2600' NE

19. PROPOSED DEPTH
3087'

21. ELEVATIONS (Show whether DF, RT, GR, etc.)
6793' GR

DRILLING OPERATIONS AUTHORIZED ARE
SUBJECT TO COMPLIANCE WITH ATTACHED
"GENERAL REQUIREMENTS"
PROPOSED CASING AND CEMENTING PROGRAM

17. NO. OF ACRES ASSIGNED
TO THIS WELL
160

20. ROTARY OR CABLE TOOLS
Rotary

22. APPROX. DATE WORK WILL START*
As soon as permitted

This action is subject to administrative
appeal pursuant to 30 CFR 290.

SIZE	OLE	SIZE OF CASING	WEIGHT PER FOOT	SETTING DEPTH	QUANTITY OF CEMENT
12-1/4"		8-5/8"	32.0# K55	300'	354 ft ³ of Class B Neat w/2% CaCl ₂
7-7/8"		4-1/2"	10.5# K55	3087'	118 ft ³ of Class B Neat and 950 ft ³ of 65:35 poz Class B Neat.

Amoco proposes to drill the above well to further develop the South Blanco Pictured Cliffs reservoir. The well will be drilled to the surface casing point using native mud. The well will then be drilled to TD with a low solids nondispersed mud system. Completion design will be based on open hole logs. Copy of all logs will be filed upon completion. Amoco's standard blowout prevention will be employed; see attached drawing for blowout preventer design. Upon completion the well site will be cleaned and the reserve pit filled and leveled. The gas from this well is dedicated to Northwest Pipeline under contract No. 33056.

OIL CON. DIST. 3

IN ABOVE SPACE DESCRIBE PROPOSED PROGRAM: If proposal is to deepen or plug back, give data on present productive zone and proposed new productive zone. If proposal is to drill or deepen directionally, give pertinent data on subsurface locations and measured and true vertical depths. Give blowout preventer program, if any.

24. SIGNED BDS Shaw TITLE Administrative Supervisor

(This space for Federal or State office use)

PERMIT NO. _____

APPROVAL DATE _____

APPROVED BY _____
CONDITIONS OF APPROVAL, IF ANY:

TITLE _____

NMOCC

*See Instructions On Reverse Side

APPROVED

DATE 6/11/84

AS AMENDED

JUN 29 1984

Robert Moore

AREA MANAGER
FARMINGTON RESOURCE AREA

OIL CONSERVATION DIVISION

P. O. BOX 2088

STATE OF NEW MEXICO
OIL AND MINERALS DEPARTMENT

SANTA FE, NEW MEXICO 87501

Form C-107
Revised 10-1-78

All distances must be from the outer boundaries of the Section.

Operator AMOCO PRODUCTION COMPANY			Lease JICARILLA CONTRACT 148		Well No. 31
Unit Letter M	Section 15	Township 25N	Range 5W	County Rio Arriba	
Actual Footage Location of Well: 880 feet from the South line and 940 feet from the West line					
Ground Level Elev. 6793	Producing Formation Pictured Cliffs		Pool South Blanco PC		Dedicated Acreage: 160 Acres

1. Outline the acreage dedicated to the subject well by colored pencil or hachure marks on the plat below.
2. If more than one lease is dedicated to the well, outline each and identify the ownership thereof (both as to working interest and royalty).
3. If more than one lease of different ownership is dedicated to the well, have the interests of all owners been consolidated by communitization, unitization, force-pooling, etc?

☐ Yes ☒ No If answer is "yes," type of consolidation _____

If answer is "no," list the owners and tract descriptions which have actually been consolidated. (Use reverse side of this form if necessary.) _____

No allowable will be assigned to the well until all interests have been consolidated (by communitization, unitization, force-pooling, or otherwise) or until a non-standard unit, eliminating such interests, has been approved by the Commission.

Sec.		OIL CONSERVATION DIVISION DIST. 3	
		15	
940'		880'	
880'		RECEIVED JUN 18 1984 BUREAU OF LAND MANAGEMENT ALBUQUERQUE, NEW MEXICO	

CERTIFICATION

I hereby certify that the information contained herein is true and complete to the best of my knowledge and belief.

BDS Shaw

Name

B. D. Shaw

Position

Administrative Supervisor

Company

Amoco Production Company

Date

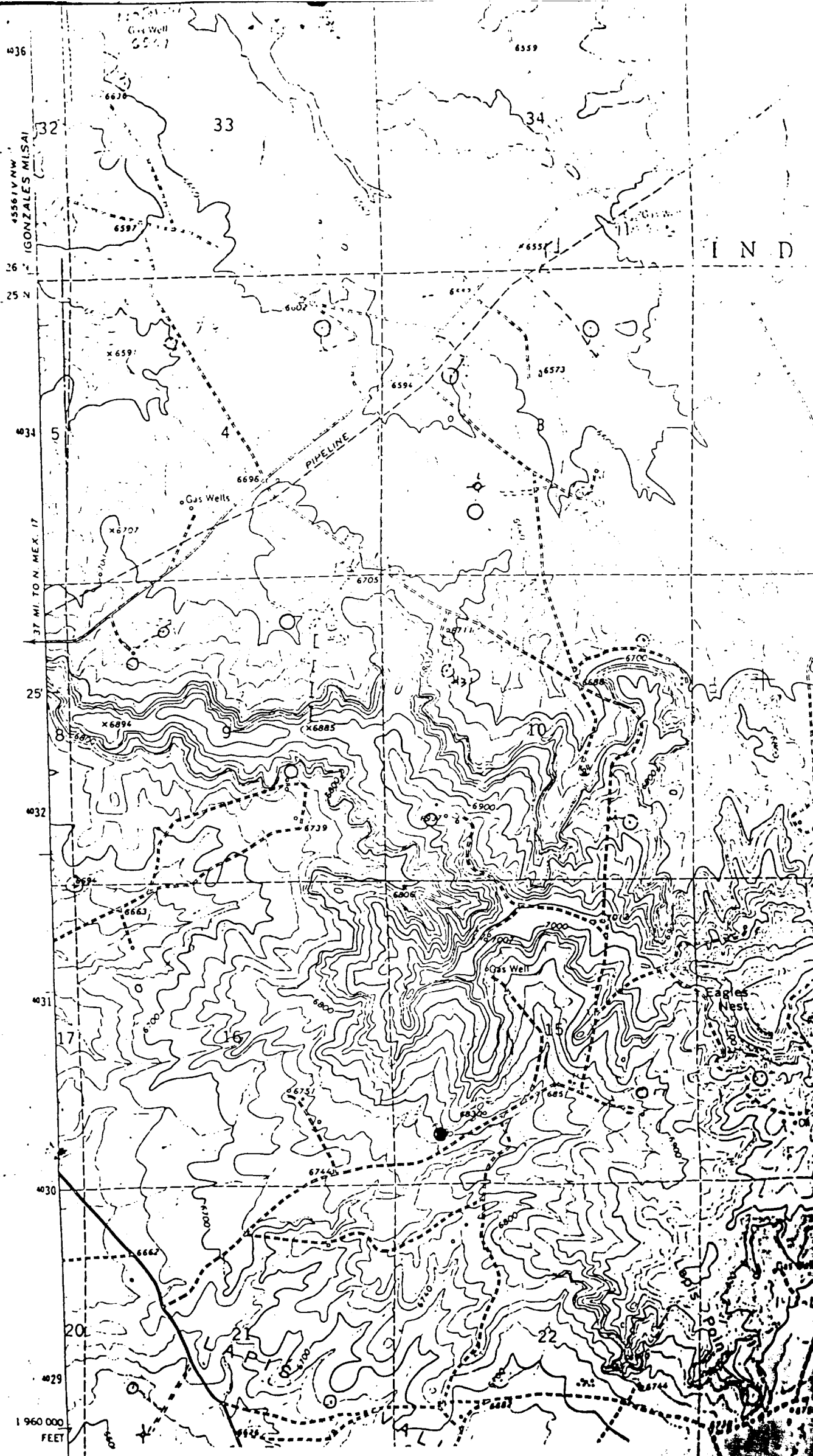
6/11/84

I hereby certify that the well location shown on this plat was plotted from field notes of actual surveys made by me or under my supervision, and that the same is true and correct to the best of my knowledge and belief.

Date Surveyed

December 8, 1983

Registered Professional Engineer
and Land Surveyor*Fred B. Kerr Jr.*
Fred B. Kerr Jr.



Vicinity Map for
AMOCO PRODUCTION CO. #31 JICARILLA CONTRACT 148
880'FSL 940'FWL Sec. 15-T25N-R5W
RIO ARRIBA COUNTY, NEW MEXICO