

UNITED STATES  
DEPARTMENT OF THE INTERIOR  
BUREAU OF LAND MANAGEMENT

APPLICATION FOR PERMIT TO DRILL, DEEPEN, OR PLUG BACK

1a. TYPE OF WORK

DRILL ☒

DEEPEN ☐

PLUG BACK ☐

b. TYPE OF WELL

OIL  
WELL ☒

GAS  
WELL ☐

OTHER ☐

SINGLE  
ZONE ☐

MULTIPLE  
ZONE ☐

2. NAME OF OPERATOR

Benson-Montin-Greer Drilling Corp.

3. ADDRESS OF OPERATOR

221 Petroleum Center Building, Farmington, NM 87401

4. LOCATION OF WELL (Report location clearly and in accordance with any State requirements.)

At surface 1790

1680' FSL, 2010' FEL, Sec. 8, T24N, R1W, 13 1984

At proposed prod. zone

BUREAU OF LAND MANAGEMENT  
FARMINGTON RESOURCE AREA

14. DISTANCE IN MILES AND DIRECTION FROM NEAREST TOWN OR POST OFFICE

2 miles north and 8 miles east of Lindrith, NM

15. DISTANCE FROM PROPOSED

LOCATION TO NEAREST  
PROPERTY OR LEASE LINE, FT.  
(Also to nearest drig. unit line, if any)

1680'

16. NO. OF ACRES IN LEASE

640

17. NO. OF ACRES ASSIGNED  
TO THIS WELL

640 641.03

18. DISTANCE FROM PROPOSED LOCATION\*  
TO NEAREST WELL, DRILLING, COMPLETED,  
OR APPLIED FOR, ON THIS LEASE, FT.

19. PROPOSED DEPTH

7730'

20. ROTARY OR CABLE TOOLS

Rotary

21. ELEVATIONS (Show whether DF, RT, GR, etc.)

DRILLING OPERATIONS AUTHORIZED ARE  
SUBJECT TO COMPLIANCE WITH ATTACHED  
"GENERAL REQUIREMENTS":

7517' GR

22. APPROX. DATE WORK WILL START\*

As soon as possible

PROPOSED CASING AND CEMENTING PROGRAM

This action is subject to administrative

appeal pursuant to 30 CFR 290.

SIZE OF HOLE	SIZE OF CASING	WEIGHT PER FOOT	SETTING DEPTH	QUANTITY OF CEMENT
12-1/4"	9-5/8"	36#	500'	250 sks (285 cubic feet)
8-3/4" to 5000'				
7-7/8" 5000' to 7750'				
5-1/2"		15.5#	7730'	* See below

- \* First Stage - 200 sacks (235 cubic feet) from TD to 6500'
- Second Stage - 150 sacks (225 cubic feet) from 6200' to 5100'
- Third Stage - 500 sacks (900 cubic feet) from 3800' to 500'

See attachment for blowout preventor program.

RECEIVED  
SEP 14 1984

OIL CON. DIV.  
DISK 3

IN ABOVE SPACE DESCRIBE PROPOSED PROGRAM: If proposal is to deepen or plug back, give data on present production zone and proposed new productive zone. If proposal is to drill or deepen directionally, give pertinent data on subsurface locations and measured and true vertical depths. Give blowout preventer program, if any.

24.

SIGNED

TITLE

Vice President

DATE

APPROVED

(This space for Federal or State office use)

AS AMENDED

PERMIT NO.

APPROVAL DATE

SEP 13 1984

APPROVED BY

TITLE

DATE

CONDITIONS OF APPROVAL, IF ANY:

M. MILLENBACH  
AREA MANAGER

\*See Instructions On Reverse Side

**NEW MEXICO OIL CONSERVATION COMMISSION  
WELL LOCATION AND ACREAGE DEDICATION PLAT**

Form C-102  
Supersedes C-121  
Effective 1-1-65

All distances must be from the outer boundaries of the Section.

Operator <b>BENSON-MONTIN-DRILLING CORP.</b>			Lease <b>Canada Ojitos Unit</b>		Well No. <b>27 (H-8)</b>
Unit Letter <b>J</b>	Section <b>8</b>	Township <b>24 NORTH</b>	Range <b>1 WEST</b>	County <b>RIO ARRIBA</b>	
Actual Footage Location of Well: <div style="display: flex; justify-content: space-between;"> <span>1790 feet from the SOUTH line and</span> <span>2120 feet from the EAST line</span> </div>					
Ground Level Elev. <b>7517</b>	Producing Formation <b>Niobrara</b>	Pool <b>W. Puerto Chiquito Mancos</b>		Dedicated Acreage: <b>640.00 641.07 Acres</b>	

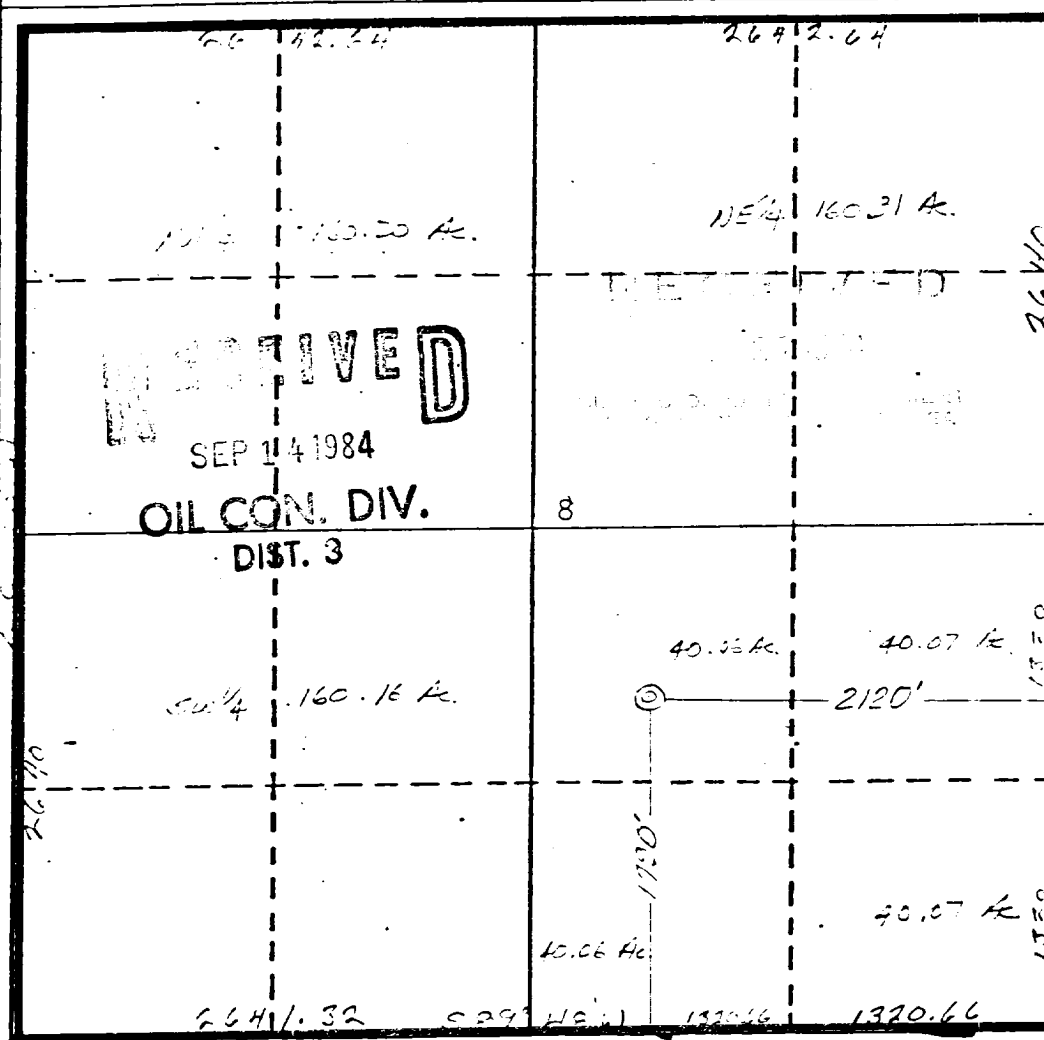
1. Outline the acreage dedicated to the subject well by colored pencil or hachure marks on the plat below.
2. If more than one lease is dedicated to the well, outline each and identify the ownership thereof (both as to working interest and royalty). Same
3. If more than one lease of different ownership is dedicated to the well, have the interests of all owners been consolidated by communitization, unitization, force-pooling, etc?

☐ Yes ☐ No If answer is "yes," type of consolidation \_\_\_\_\_

If answer is "no," list the owners and tract descriptions which have actually been consolidated. (Use reverse side of this form if necessary.) \_\_\_\_\_

No allowable will be assigned to the well until all interests have been consolidated (by communitization, unitization, forced-pooling, or otherwise) or until a non-standard unit, eliminating such interests, has been approved by the Commission.

*539° 43' W*



**CERTIFICATION**

I hereby certify that the information contained herein is true and complete to the best of my knowledge and belief.

*Virgil L. Stoabs*  
Name

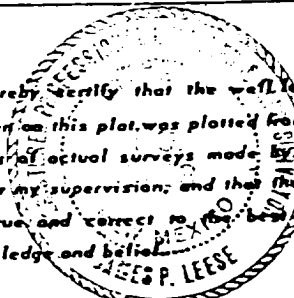
Virgil L. Stoabs

Position  
Vice President

Company Benson-Montin-Greer Drilling Corp.

Date  
July 25, 1984

I hereby certify that the well location shown on this plat was plotted from field notes of actual surveys made by me or under my supervision; and that the same is true and correct to the best of my knowledge and belief.

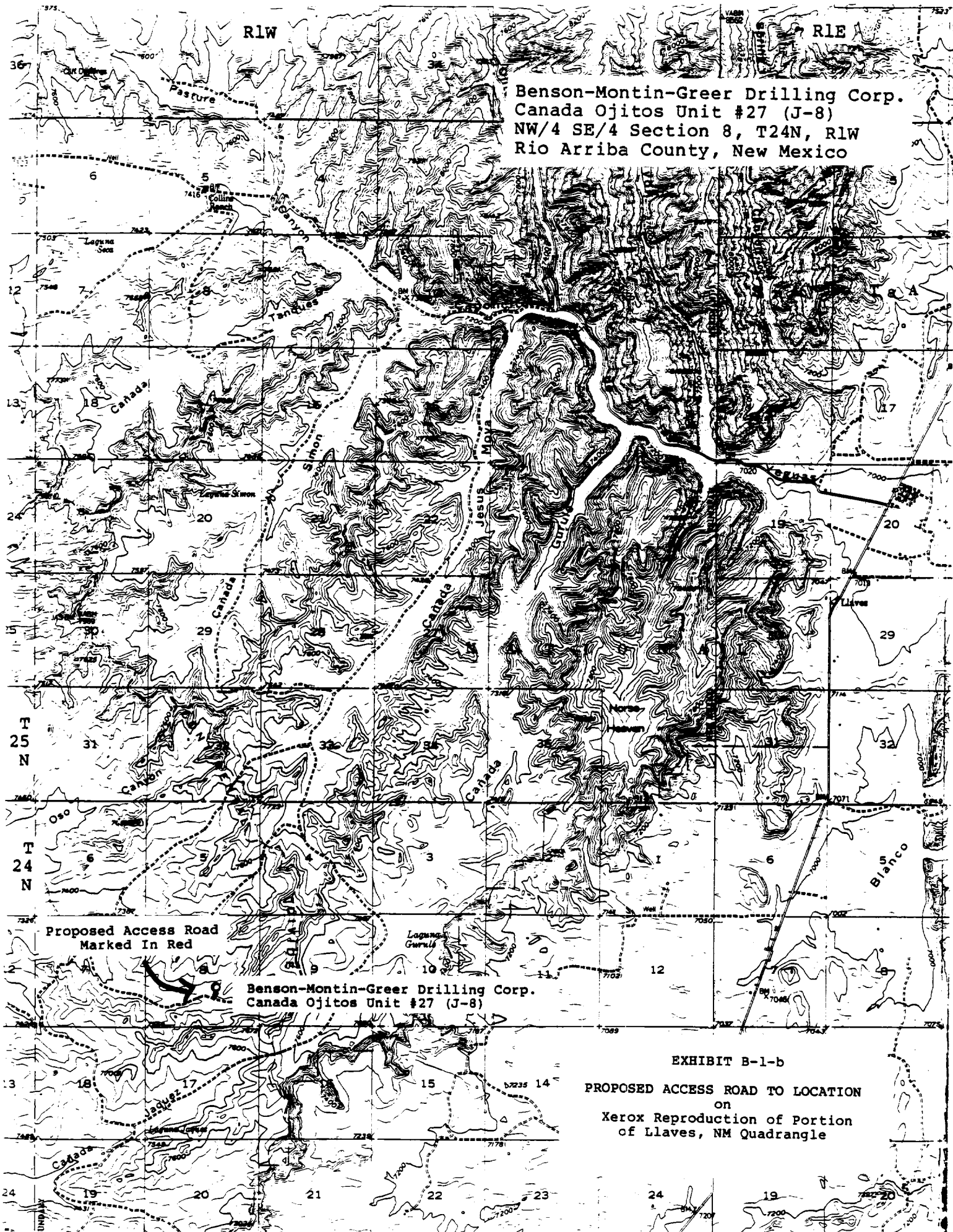


Date Surveyed  
July 2, 1984

Registered Professional Engineer and/or Land Surveyor

*James P. Leese*  
James P. Leese

Certificate No.



Benson-Montin-Greer Drilling Corp.  
Canada Ojitos Unit #27 (J-8)  
NW/4 SE/4 Section 8, T24N, R1W  
Rio Arriba County, New Mexico

Proposed Access Road  
Marked In Red

Benson-Montin-Greer Drilling Corp.  
Canada Ojitos Unit #27 (J-8)

EXHIBIT B-1-b  
PROPOSED ACCESS ROAD TO LOCATION  
on  
Xerox Reproduction of Portion  
of Llaves, NM Quadrangle