

UNITED STATES  
DEPARTMENT OF THE INTERIOR  
BUREAU OF LAND MANAGEMENT

APPLICATION FOR PERMIT TO DRILL, DEEPEN, OR PLUG BACK

1a. TYPE OF WORK

DRILL ☒

DEEPEN ☐

PLUG BACK ☐

b. TYPE OF WELL

OIL  
WELL ☐

GAS  
WELL ☒

OTHER

SINGLE  
ZONE ☒

MULTIPLE  
ZONE ☐

2. NAME OF OPERATOR

Amoco Production Company

3. ADDRESS OF OPERATOR

501 Airport Drive, Farmington, NM 87401

4. LOCATION OF WELL (Report location clearly and in accordance with any State requirements\*)

At surface 1635' FSL X 1500' FEL

At proposed prod. zone

Same

14. DISTANCE IN MILES AND DIRECTION FROM NEAREST TOWN OR POST OFFICE\* ON LAND MANAGEMENT

15 miles northeast of Counselor, New Mexico

15. DISTANCE FROM PROPOSED\*

LOCATION TO NEAREST  
PROPERTY OR LEASE LINE, FT.  
(Also to nearest drlg. unit line, if any)

1500'

16. NO. OF ACRES IN LEASE

2557.20

17. NO. OF ACRES ASSIGNED

TO THIS WELL  
E/320

18. DISTANCE FROM PROPOSED LOCATION\*

TO NEAREST WELL, DRILLING, COMPLETED,  
OR APPLIED FOR, ON THIS LEASE, FT.

19. PROPOSED DEPTH

1 1/2 mi. NE of 7400'

20. ROTARY OR CABLE TOOLS

Rotary

21. ELEVATIONS (Show whether DF, RT, GR, etc.)

6749' GR

DRILLING OPERATIONS  
SUBJECT TO GOVERNMENT ATTACHED  
"GENERAL REQUIREMENTS"

22. APPROX. DATE WORK WILL START\*

As soon as permitted

PROPOSED CASING AND CEMENTING PROGRAM

This action is subject to administrative  
appeal pursuant to 30 CFR 290.

SIZE OF HOLE	SIZE OF CASING	WEIGHT PER FOOT	SETTING DEPTH	QUANTITY OF CEMENT
12-1/4"	8-5/8"	24#, K-55	300'	413 ft <sup>3</sup> of Class B Neat <sub>3</sub> w/ 2% CaC
7-7/8"	4-1/2"	10.5#, K-55	7400'	840 ft <sup>3</sup> 50:50 <sub>3</sub> poz 118 ft <sup>3</sup> Class <sub>3</sub> B Neat 1250 ft <sup>3</sup> 65:35 poz 118 ft <sup>3</sup> Class B Neat

Amoco proposes to drill the above well to further develop the Basin Dakota reservoir. The well will be drilled to the surface casing point using native mud. The well will then be drilled to TD with a low solids nondispersed mud system. Completion design will be based on open hole logs. Copy of all logs will be filed upon completion. Amoco's standard blowout prevention will be employed; see attached drawing for blowout preventer design. Upon completion the well site will be cleaned and the reserve pit filled and leveled. The gas from this well is dedicated to Northwest Pipeline under contract No. 36886.

IN ABOVE SPACE DESCRIBE PROPOSED PROGRAM: If proposal is to deepen or plug back, give data on present productive zone and proposed new productive zone. If proposal is to drill or deepen directionally, give pertinent data on subsurface locations and measured and true vertical depths. Give blowout preventer program, if any.

24. Original signed by  
SIGNED B. D. Shaw TITLE Administrative Supervisor

(This space for Federal or State of use)

PERMIT NO.

APPROVAL DATE

APPROVED BY

CONDITIONS OF APPROVAL, IF ANY:

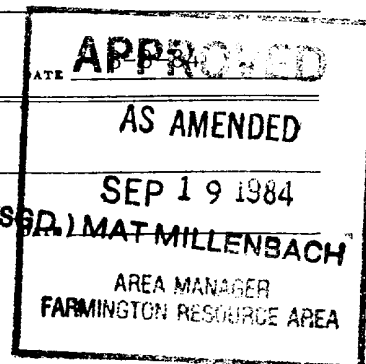
TITLE

RECEIVED  
SEP 20 1984

OIL CON. DIV.  
DIST. 3

NMOCC

\*See Instructions On Reverse Side



All distances must be from the outer boundaries of the Section.

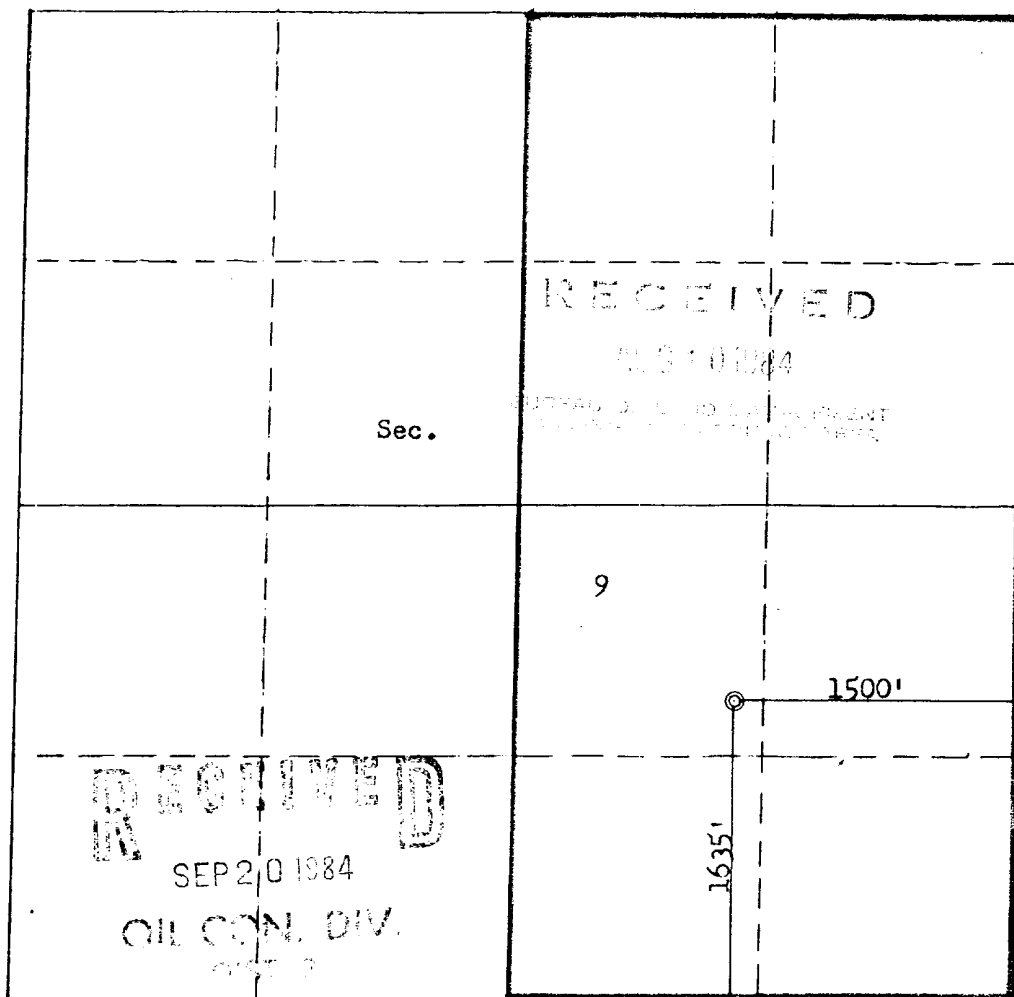
Operator <b>AMOCO PRODUCTION COMPANY</b>			Lease <b>JICARILLA CONTRACT 116</b>		Well No. <b>13R</b>
Unit Letter <b>J</b>	Section <b>9</b>	Township <b>25N</b>	Range <b>5W</b>	County <b>Rio Arriba</b>	
Actual Footage Location of Well: <b>1635</b> feet from the <b>South</b> line and <b>1500</b> feet from the <b>East</b> line					
Ground Level Elev: <b>5749</b>	Producing Formation <b>Dakota</b>		Pool <b>Basin Dakota</b>		Dedicated Acreage: <b>320</b> Acres

- Outline the acreage dedicated to the subject well by colored pencil or hatchure marks on the plat below.
- If more than one lease is dedicated to the well, outline each and identify the ownership thereof (both as to working interest and royalty).
- If more than one lease of different ownership is dedicated to the well, have the interests of all owners been consolidated by communitization, unitization, force-pooling, etc?

☐ Yes ☐ No If answer is "yes," type of consolidation \_\_\_\_\_

If answer is "no," list the owners and tract descriptions which have actually been consolidated. (Use reverse side of this form if necessary.) \_\_\_\_\_

No allowable will be assigned to the well until all interests have been consolidated (by communitization, unitization, forced-pooling, or otherwise) or until a non-standard unit, eliminating such interests, has been approved by the Commission.



CERTIFICATION

I hereby certify that the information contained herein is true and complete to the best of my knowledge and belief.

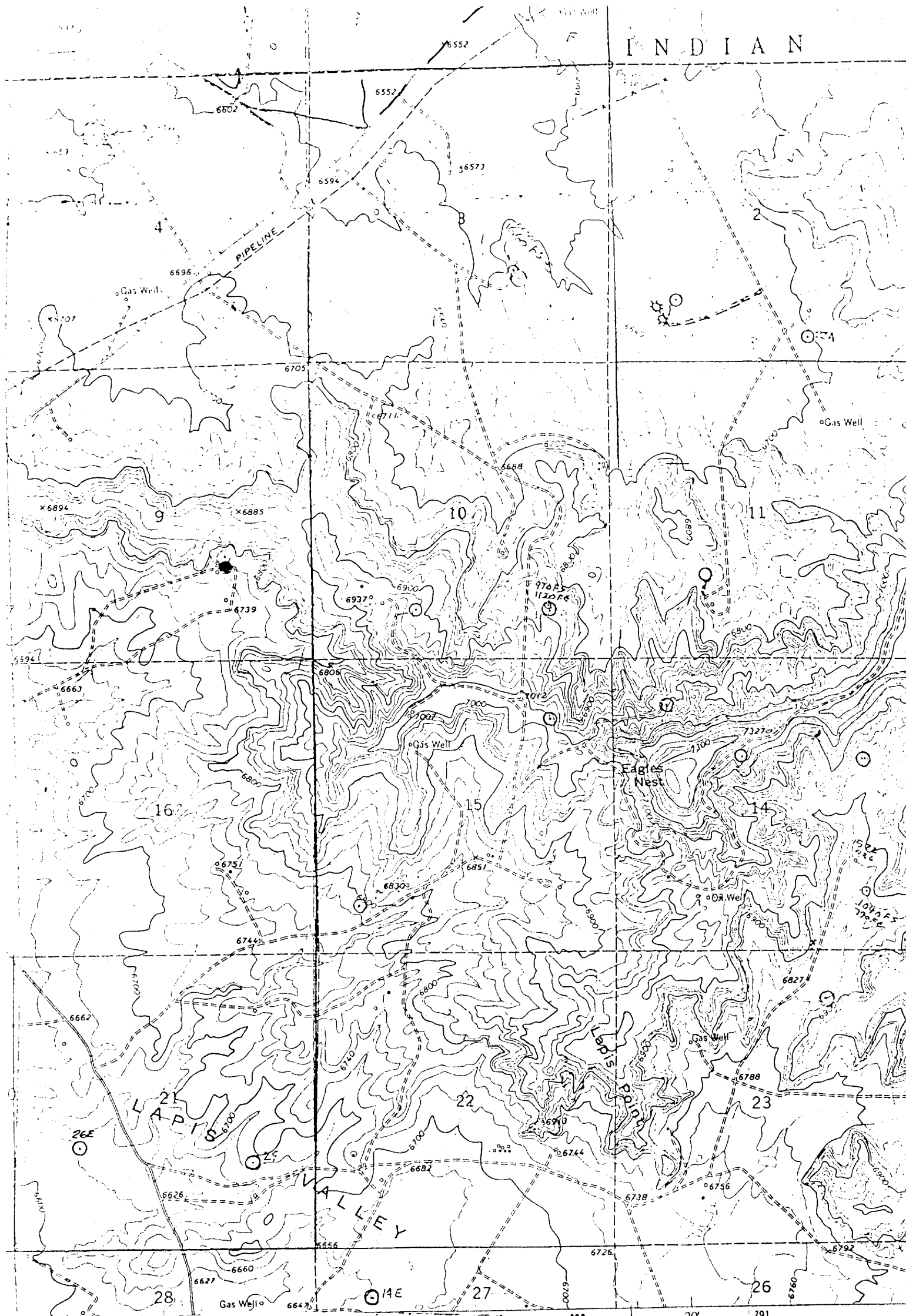
Original Signed By  
**B. D. Shaw**

Name  
**B. D. Shaw**  
Position  
**Administrative Supervisor**  
Company  
**Amoco Production Company**  
Date  
**8-8-84**

I hereby certify that the well location shown on this plat was plotted from field notes of actual surveys made by me or under my supervision, and that the same is true and correct to the best of my knowledge and belief.

Date Surveyed  
**July 30, 1984**  
Registered Professional Engineer and Land Surveyor  
**Fred. B. Kerr Jr.**  
Certificate No. **4222**  
**1950**

Scale: 1"=1000'



170 00

Maped, edited

Control by USGS and

Topography by phot-

ographs taken in 1962 - field check

Cylindrical projection - 1927 North American datum

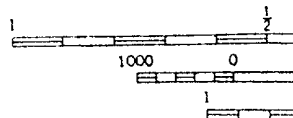
10,000-foot grid based on New Mexico coordinate system, central zone

1000 meter Universal Transverse Mercator grid ticks.

Color 13 shown in blue

Entire area is within the San Juan Basin gas field

Vicinity Map for  
 AMOCO PRODUCTION COMPANY #13R JICARILLA Cont. #146  
 1635'FSL 1500'FEL Sec. 9-T25N-R5W  
 RIO ARriba COUNTY, NEW MEXICO



1°22' 13 1/2°  
 24 MILES 240 MILES

UTM GRID AND 1963 MAGNETIC NORTH  
 DECLINATION AT CENTER OF SHEET