

UNITED STATES
DEPARTMENT OF THE INTERIOR
BUREAU OF LAND MANAGEMENT

APPLICATION FOR PERMIT TO DRILL, DEEPEN, OR PLUG BACK

1a. TYPE OF WORK DRILL ☒ DEEPEN ☐ PLUG BACK ☐

b. TYPE OF WELL
OIL WELL ☒ (both) GAS WELL ☒ OTHER ☐ SINGLE ZONE ☒ MULTIPLE ZONE ☒

2. NAME OF OPERATOR
Amoco Production Company

3. ADDRESS OF OPERATOR
501 Airport Drive, Farmington, New Mexico 87401

4. LOCATION OF WELL (Report location clearly and in accordance with any State requirements*)
At surface

970' FSL X 1650' FEL
At proposed prod. zone
Same

14. DISTANCE IN MILES AND DIRECTION FROM NEAREST TOWN OR POST OFFICE*
2 miles east of Lindrith, New Mexico

15. DISTANCE FROM PROPOSED*
LOCATION TO NEAREST
PROPERTY OR LEASE LINE, FT.
(Also to nearest drlg. unit line, if any) 970'

16. NO. OF ACRES IN LEASE
240

18. DISTANCE FROM PROPOSED LOCATION*
TO NEAREST WELL, DRILLING, COMPLETED,
OR APPLIED FOR, ON THIS LEASE, FT. 1500'W

19. PROPOSED DEPTH
7965'

21. ELEVATIONS (Show whether DF, RT, GR, etc.)
7298' GR

17. NO. OF ACRES ASSIGNED
TO THIS WELL
160 - 40/100

20. ROTARY OR CABLE TOOLS
Rotary

22. APPROX. DATE WORK WILL START*
As soon as permitted

23. PROPOSED CASING AND CEMENTING PROGRAM				
SIZE OF HOLE	SIZE OF CASING	WEIGHT PER FOOT	SETTING DEPTH	
12-1/4"	8-5/8"	24#, K-55	300'	300 SX Class B
7-7/8"	5-1/2"	15.5#, K-55	7965'	2066 ft ³ Class B 50:50 poz

DV tool may be run for two-stage primary cement job. Total cement volume will remain the same.

Amoco proposes to drill the above well to further develop the West Lindrith GP-DK reservoir. The well will be drilled to the surface casing point using native mud. The well will then be drilled to TD with a low solids nondispersed mud system. Completion design will be based on open hole logs. Copy of all logs will be filed upon completion. Amoco's standard blowout prevention will be employed; see attached drawing for blowout preventer design. Upon completion the well site will be cleaned and the reserve pit filled and leveled. The gas from this well is undedicated at this time.

IN ABOVE SPACE DESCRIBE PROPOSED PROGRAM: If proposal is to deepen or plug back, give data on present productive zone and proposed new productive zone. If proposal is to drill or deepen directionally, give pertinent data on subsurface locations and measured and true vertical depths. Give blowout preventer program, if any.

24. Original Signed By
SIGNED B. D. Shaw TITLE Administrative Supervisor
(This space for Federal or State use)
PERMIT NO. APPROVAL DATE
APPROVED BY TITLE
CONDITIONS OF APPROVAL, IF ANY:

APPROVED
DATE 8/21/84
AS AMENDED
OCT 11 1984
/s/ L. Stan McKee
ASST. AREA MANAGER
FARMINGTON RESOURCE AREA

All distances must be from the outer boundaries of the Section.

Operator AMOCO PRODUCTION COMPANY			Lease OSO CANYON GAS COM "A"		Well No. 1
Unit Letter 0	Section 23	Township 24N	Range 2W	County Rio Arriba	
Actual Footage Location of Well: 970 feet from the South line and 1650 feet from the East line					
Ground Level Elev. 7298	Producing Formation Gallup - Dakota		Pool W.C. West Lindrith GP DK		Dedicated Acreage: 16040/40 Acres

1. Outline the acreage dedicated to the subject well by colored pencil or hachure marks on the plat below.
2. If more than one lease is dedicated to the well, outline each and identify the ownership thereof (both as to working interest and royalty).
3. If more than one lease of different ownership is dedicated to the well, have the interests of all owners been consolidated by communitization, unitization, force-pooling, etc?

☒ Yes ☐ No If answer is "yes," type of consolidation Communitized

If answer is "no," list the owners and tract descriptions which have actually been consolidated. (Use reverse side of this form if necessary.)

No allowable will be assigned to the well until all interests have been consolidated (by communitization, unitization, forced-pooling, or otherwise) or until a non-standard unit, eliminating such interests, has been approved by the Commission.

Sec.		RECEIVED SEP 04 1984 OIL CONSERVATION DIVISION SANTA FE, NEW MEXICO	
		23	
RECEIVED OCT 11 1984 OIL CONSERVATION DIVISION SANTA FE, NEW MEXICO		1650'	
		970'	

CERTIFICATION

I hereby certify that the information contained herein is true and complete to the best of my knowledge and belief.

Original Signed By

B. D. Shaw

Name
B. D. Shaw

Position
Adm. Supervisor

Company
Amoco Production Company

Date
8/27/84

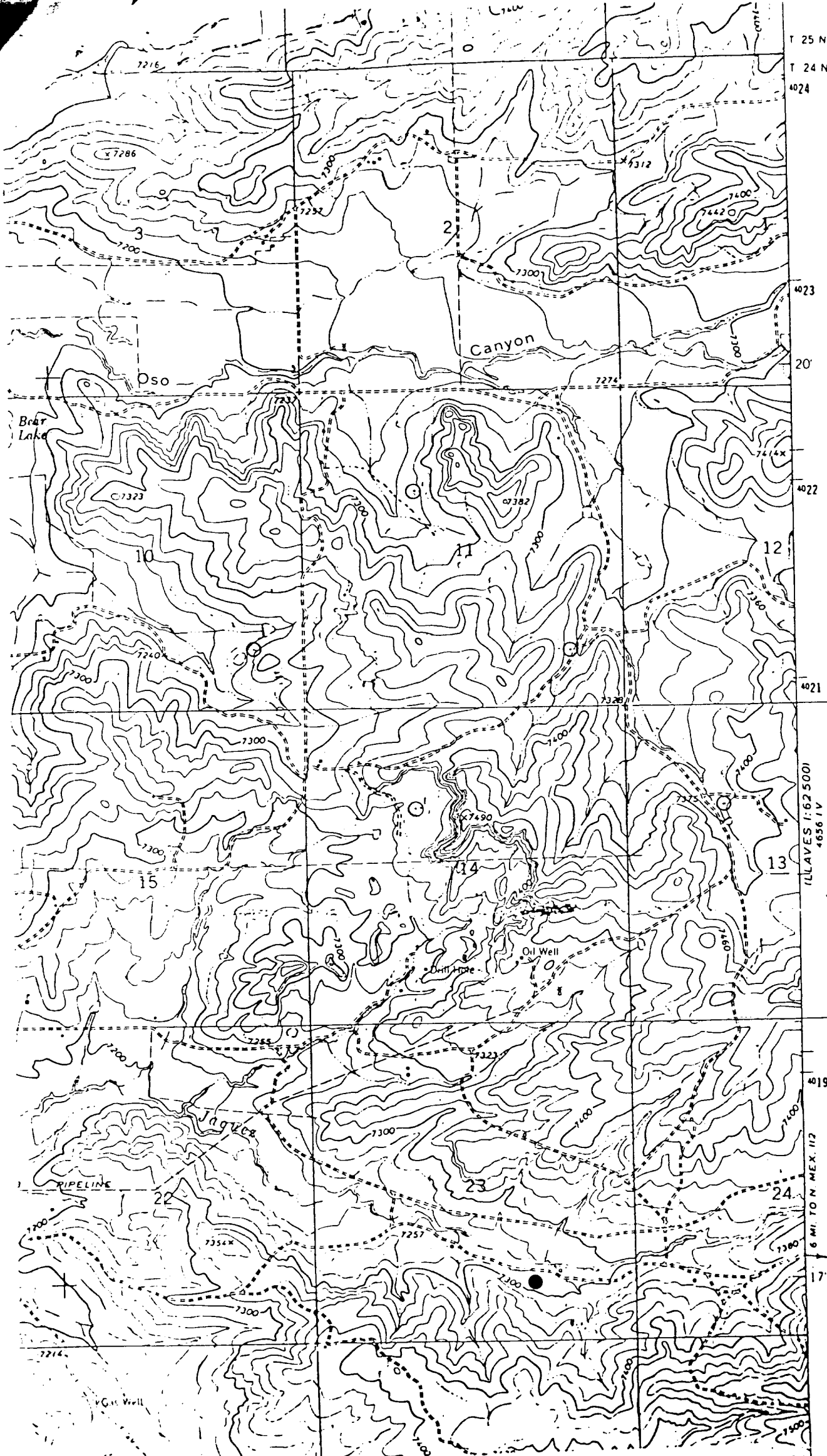
I hereby certify that the well location shown on this plat was plotted from field notes of actual surveys made by me or under my supervision, and that the same is true and correct to the best of my knowledge and belief.

Date Surveyed
August 9, 1984

Registered Professional Engineer
and Land Surveyor

Fred. B. Kerr Jr.

Certificate No. 4122



Vicinity Map for
AMOCO PRODUCTION CO. #1 OSO CANYON GAS COM "A"
970'FSL 1650'FEL Sec. 23-T2LN-R2W
RIO ARRIBA COUNTY, NEW MEXICO