

UNITED STATES
DEPARTMENT OF THE INTERIOR
BUREAU OF LAND MANAGEMENT

APPLICATION FOR PERMIT TO DRILL, DEEPEN, OR PLUG BACK

1a. TYPE OF WORK

DRILL ☒

DEEPEN ☐

PLUG BACK ☐

b. TYPE OF WELL

OIL
WELL ☒

GAS
WELL ☐

OTHER

SINGLE
ZONE ☐

MULTIPLE
ZONE ☒

2. NAME OF OPERATOR

Union Texas Petroleum Corporation

3. ADDRESS OF OPERATOR

P.O. Box 1290, Farmington, New Mexico 87499

4. LOCATION OF WELL (Report location clearly and in accordance with any State requirements.)*

At surface

828' FSL; 795' FEL

At proposed prod. zone Same as above

14. DISTANCE IN MILES AND DIRECTION FROM NEAREST TOWN OR POST OFFICE*

11.5 miles Northwest of Lindrieth New Mexico.

15. DISTANCE FROM PROPOSED*

LOCATION TO NEAREST
PROPERTY OR LEASE LINE, FT.
(Also to nearest drlg. unit line, if any)

492'

492'

16. NO. OF ACRES IN LEASE

480.00

17. NO. OF ACRES ASSIGNED
TO THIS WELL

SE SE 39.94

18. DISTANCE FROM PROPOSED LOCATION*

TO NEAREST WELL, DRILLING, COMPLETED,
OR APPLIED FOR, ON THIS LEASE, FT.

240'

19. PROPOSED DEPTH

8320

20. ROTARY OR CABLE TOOLS

Rotary

21. ELEVATIONS (Show whether DF, RT, GR, etc.) DRILLING OPERATIONS AUTHORIZED ARE

7249 GR (Ungraded)

SUBJECT TO COMPLIANCE WITH ATTACHED

22. APPROX. DATE WORK WILL START*

November 10, 1984

23. "GENERAL REQUIREMENTS" FOR PROPOSED DRILLING AND CEMENTING PROGRAM

This action is subject to administrative
appeal pursuant to 30 CFR 290.

SIZE OF HOLE	SIZE OF CASING	WEIGHT PER FOOT	SETTING DEPTH	QUANTITY OF CEMENT
12-1/4	New 8-5/8"K55	24.00#	(+) 300'	250 cu.ft. CL "B" w/2% CaCl ₂ circ.
7-7/8	New 4-1/2"K55	11.6 #	(+) 8280'	2876 cu.ft. Circulated (See below)

We desire to drill this well to the above described program. After surface pipe is set and cmt. W.O.C. Pressure test the surface casing. Drill out with 7-7/8" bit to T.D. using mud as the circ. medium. After logging the hole, run csg. to T.D. with D.V. tools at approx. 6300' and approx. 4050' Cmt. as follows: 1st stage-20BBLs flush lead ahead of approx. 680 cu.ft. of 50-50 POZ and 2% Gel, 0.6% FLA and 5150# of salt to circ. to the D.V. Tool. 2nd stage-preflush with 20BBLs flow check followed by approx. 798 cu.ft. of 50-50 POZ w/4% Gel and 2718# of Gilsonite tailed in with approx. 118 cu.ft. of CL "B" w/2% CaCl to circulate to the 2nd D.V. tool. 3rd stage-cement with approx. 1295 cu.ft. of 65-35 POZ with 12% Gel, 2% CaCl₂, 5512# of Gilsonite and 112# of flocele followed by approx. 118 cu.ft. of CL "B" with 2% CaCl to circ. to the surface. W.O.C. Drill out the D.V. tools and pressure test the csg. Perf. and frac. the KD zone, set a bridge plug above the KD. Perf. and frac. the Gal. zone and clean the zone up. Remove the bridge plug. Clean up the KD zone. Run 2-3/8" J55 tbg. to the KD zone. Run downhole pumps and rods. Set a pumping unit. Set production equipment and test the well. Connect to our gathering system as applied for by separate Sundry Notice. Test the well and put on production.

IN ABOVE SPACE DESCRIBE PROPOSED PROGRAM: If proposal is to deepen or plug back, give data on present productive zone and proposed new productive zone. If proposal is to drill or deepen directionally, give pertinent data on subsurface locations and measured and true vertical depths. Give blowout preventer program, if any.

24.

SIGNED

Rudy D. Motte

TITLE Area Operation Manager

DATE October 10, 1984

(This space for Federal or State office use)

PERMIT NO.

APPROVAL DATE

APPROVED BY

CONDITIONS OF APPROVAL, IF ANY:

TITLE

*See Instructions On Reverse Side

**NEW MEXICO OIL CONSERVATION COMMISSION
WELL LOCATION AND ACREAGE DEDICATION PLAT**

Form C-104
Supersedes C-128
Effective 14-83

All distances must be from the outer boundaries of the Section.

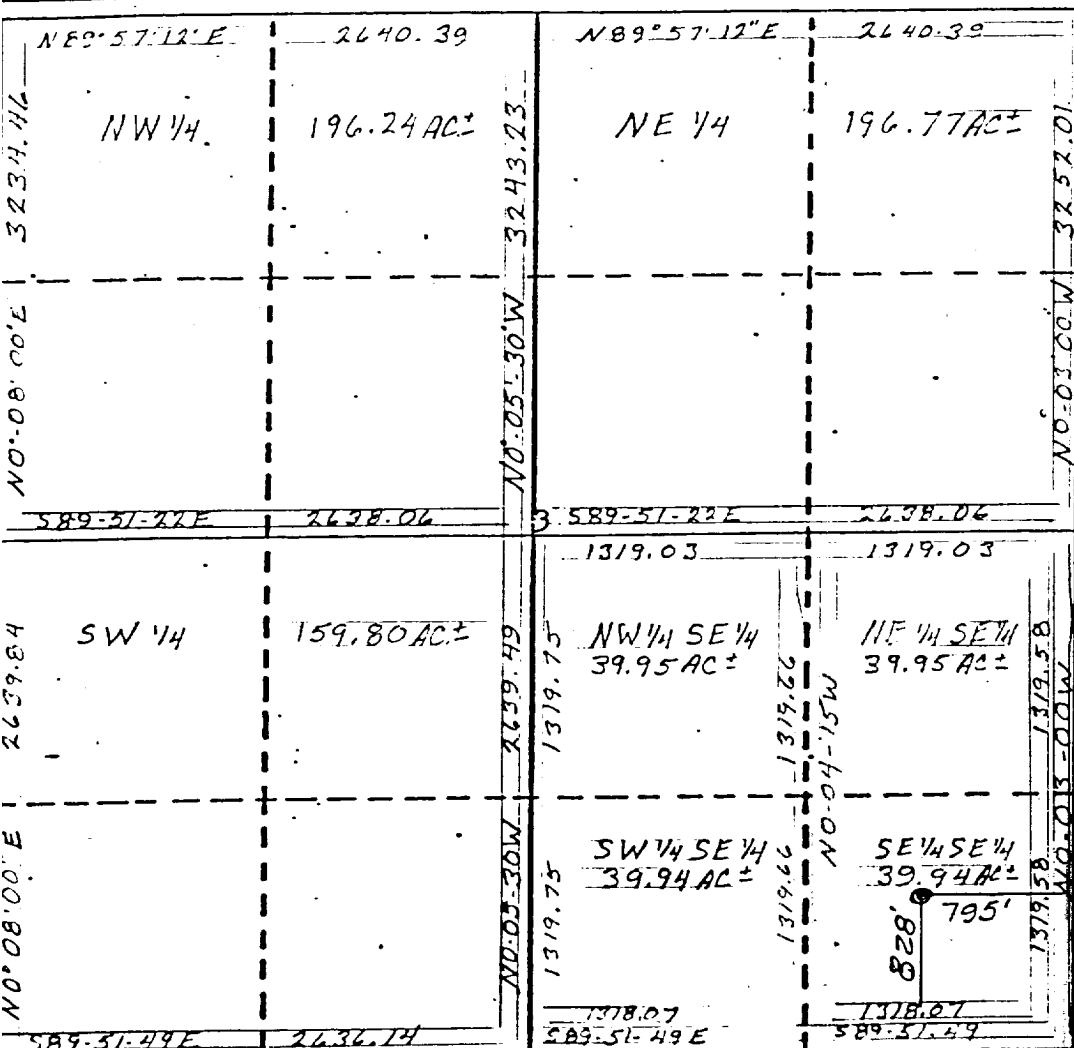
Operator UNION TEXAS PETROLEUM CORPORATION			Lease MCCRODEN		Well No. 6
Unit Letter P	Section 3	Township 25 NORTH	Range 3 WEST	County RIO ARriba	
Actual Footage Location of Well: <div style="display: flex; justify-content: space-between;"> 828 feet from the SOUTH line and 795 feet from the EAST line </div>					
Ground Level Elev. 7249	Producing Formation Gallup Dakota	Pool Ojito	Dedicated Acreage: SE SE 39.94 Acres		

1. Outline the acreage dedicated to the subject well by colored pencil or hachure marks on the plat below.
2. If more than one lease is dedicated to the well, outline each and identify the ownership thereof (both as to working interest and royalty).
3. If more than one lease of different ownership is dedicated to the well, have the interests of all owners been consolidated by communitization, unitization, force-pooling, etc?

☐ Yes ☒ No If answer is "yes," type of consolidation _____

If answer is "no," list the owners and tract descriptions which have actually been consolidated. (Use reverse side of this form if necessary.) Union Texas Exploration

No allowable will be assigned to the well until all interests have been consolidated (by communitization, unitization, forced-pooling, or otherwise) or until a non-standard unit, eliminating such interests, has been approved by the Commission.



CERTIFICATION

I hereby certify that the information contained herein is true and complete to the best of my knowledge and belief.

Rudy D. Motto

Name
Rudy D. Motto

Position
Area Operations Manager

Company
Union Texas Petroleum Corp.

Date
October 10, 1984

I hereby certify that the well location shown on this plat was plotted from field notes and/or surveys made by me or under my supervision, and that the same are true and correct to the best of my knowledge and belief.

Michael Daly

Date Surveyed
September 21, 1984

Registered Professional Engineer and/or Land Surveyor

Michael Daly

Certificate No.
.5992

EXHIBIT A

LEASE: SF-079616

MC CRODEN # 6

828' FSL & 795' FEL
SEC. 3, T25N, R3W
RIO ARriba COUNTY, N.M.

LESS THAN 100' OF ROAD NEEDED.

